

# Exporting to EndNote® from SpringerLink

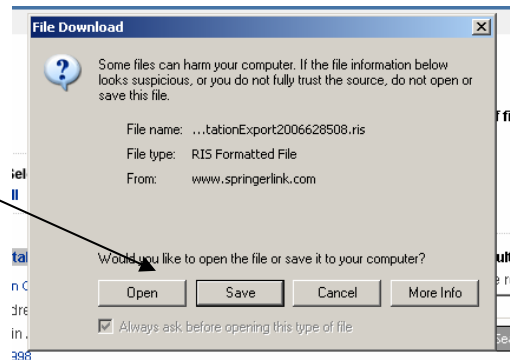
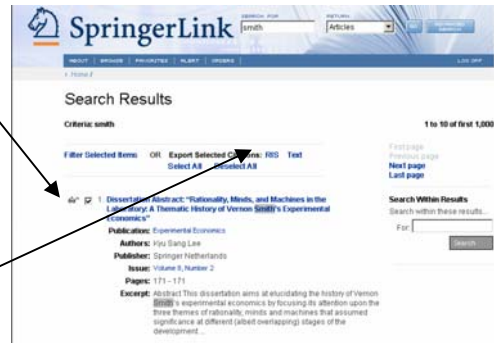
## 1. THE SCOPE OF THIS GUIDE

Exporting from online databases into your EndNote Library is a key feature of EndNote, and a quick and efficient way to build your Endnote Library. This guide takes you through exporting from ScienceDirect.

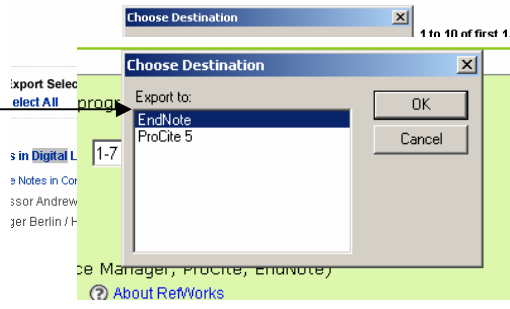
## 2. EXPORTING FROM SCIENCEDIRECT TO ENDNOTE

After you have completed your search follow these steps to Export your references.

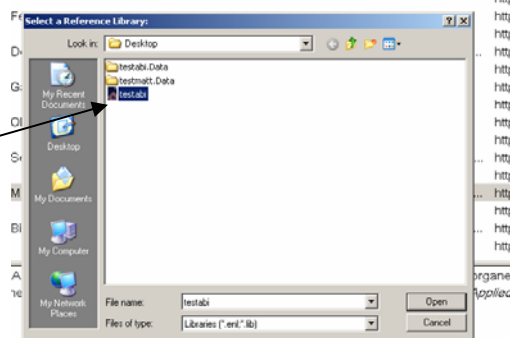
- **Mark** the References you want to Export by clicking in the **check boxes** on the left hand side of the screen.
- Click on the **Export Selected Citations: RIS**
- From **SpringerLink** open the **RIS formatted File**.



- **SpringerLink** prompts you to **Choose Destination**. Highlight **EndNote**. Confirm this by clicking **OK**.



- **SpringerLink** will automatically start EndNote if it is not already open. Choose an EndNote Library to Export into. Click on the **Open** button. The Export will take place automatically.



Note: these instructions are for **Microsoft Explorer**. The procedures for Exporting to EndNote will vary in other browsers.

### 3. FOR MORE INFORMATION ON ENDNOTE

**Bournemouth University Help** - Questions and help using *EndNote* please use [ASK](http://www.bournemouth.ac.uk/library/ask) [www.bournemouth.ac.uk/library/ask]. Note that questions and answers maybe shared. Technical questions relating to the installation of *EndNote* should be referred to IT Services.

**EndNote ListServ** - Interact with the community of *EndNote* users and search an [archive of questions](http://lists.adeptscience.co.uk/endnote) [lists.adeptscience.co.uk/endnote].