

Finding Information on British Companies Subject Advice

Library and Learning Support provides an extensive collection of online and print resources. Our print collections are held at The Sir Michael Cobham Library at Talbot Campus (TC) and the Bournemouth House Library (BH) on the Lansdowne Campus. The Library i-Floor at the Executive Business Centre (EBC) is available to accredited Business School staff and students

Searching for Information:

To start your research, login to myBU here <http://mybu.bournemouth.ac.uk/> where you can:

- access the Academic Skills tab on myBU for advice and guidance about university study skills.
- access your reading lists within 'My Units' on the Home tab;
- use the dictionaries and encyclopaedias for definitions and background information (access via the 'Reference Works' link on the Library tab);
- use mySearch on the Library tab to search across electronic databases we subscribe to, as well as our Library Catalogue, for books and journal articles;
- for a more focussed search on a selected database, use the 'Databases' link on the Library tab;

You can also access Library resources via the Library website www.bournemouth.ac.uk/library. This guide refers to links on the myBU Library tab. If you require help with navigating the Library website, just contact us.

Subject Advice Services:

We offer help and advice on information resources when you are researching for your assignments or dissertation. You can drop into the Library, make an appointment with your Subject Librarian, or use our online services.

- Ask for help at the Subject Advice Desk.
- Use the online Chat Enquiry Service for a one-to-one discussion with our Library staff.
- Phone our dedicated help line +44 (0) 1202 965959.
- Follow our blogs: Library and Learning Support News, Research Support, Subject Librarians' Blogs. All available via the myBU Library tab.
- E-mail your Library Support Team to make an appointment, at bslibteam@bournemouth.ac.uk.

Resources for your subject:

Off campus access

You will require your University login details to access our online databases when you are off campus.

Books

The Library Catalogue contains details of our print collection and provides access to electronic books. Select the 'Look for book or journal' link on the myBU Library tab. Search the Catalogue for authors, titles or using subject terms. Results indicate the campus location of printed books and a shelf mark (found on the spine label).

To find a specific title, ensure you have the complete shelf mark including letters after the numbers. If QR or F&S precede the shelf mark, it is part of our reference collection which must remain in the Library and cannot be loaned.

Facts and Figures:

In the following list, where a website or shelf mark is not noted, databases are available via the myBU Library tab.

1. Company Annual Reports

The Library no longer holds print copies of public company annual reports. Use Thomson Analytics (item 6) or the Library's Company & Industry Information Subject Resources Websites page (item 22) to locate downloadable copies.

Continued on page 2.

Finding Information on British Companies

2. Companies House Online

www.companies-house.gov.uk/info

Filing data, including date of latest filed accounts, for all companies registered in England, Wales, Scotland and Northern Ireland.

3. FAME

Detailed information on all active British quoted and unquoted companies, excluding banks and finance houses. Data includes financial history of the company, credit ratings, financial ratios and trends, directors, subsidiaries and holding companies.

4. Company REFS – Really Essential Financial Statements.

Shelf mark: F&S 332.632 COM

Five years' financial performance data on all UK listed USM and companies, excluding investment trusts, plus selected broker forecasts.

5. The Company Guide (Quarterly)

Shelf mark: F&S 338.740941.COM

Five years financial details for all PLC and USM companies.

6. Thomson Analytics

Company analysis, dividends, share prices, stock market indices for over 2,000 UK-quoted companies (also covers over 50,000 companies worldwide).

7. Key British Enterprises (Annual)

Shelf mark: F&S 338.0942 KEY

Information on 50,000 companies, including rankings for the top 5,000 companies. It provides product and service, geographical, and trade indexes.

8. U.K. Kompass (Annual)

Shelf mark: F&S 338.0942 KOM

This is a finely-classified listing of companies by products and services together with geographical listing of over 40,000 UK companies. It provides information on their directors, bank, share capital, number of employees, products and services. Also free online searching www.kompass.com but with name and address information only.

9. Dun & Bradstreet Business Directory

<http://www.dnb.co.uk>

Free directory of over 1.8 million UK businesses. Address details includes link to multimap.com for business location.

Text and Comment:

10. Financial Times Newspapers

Paper copies kept for six months and on microfilm from 1979.

11. Investors Chronicle (Journals)

Company performance and investment analysis. It has its own quarterly index.

12. Factiva

News from British, US and European business and trade journals and newspapers.

13. Business Source Complete

Business and management research database.

14. International Directory of Company Histories

Potted histories of international companies which are "leading influences in their industries or geographic locations."

15. Global Marketing Information Database (GMID)

Database of Euromonitor's portfolio of statistical and full text market analysis and other company and product data sources.

16. Mintel

Full text of Mintel's market research reports on domestic consumer products and services, plus UK marketing news from UK trade & retail press.

17. Company & Industry Information Subject Resources

www.bournemouth.ac.uk/library/resources/resources_comp_ind_info.html

Includes links to free and subscription websites covering company data (e.g. Kompass, Companies House), government and industry data, business trend statistics and Yellow Pages.

Contact Details:

Bournemouth House Library

19 Christchurch Road, Bournemouth BH1 3LH UK

For information and subject advice:

Tel: +44 (0) 1202 965959.

The Sir Michael Cobham Library

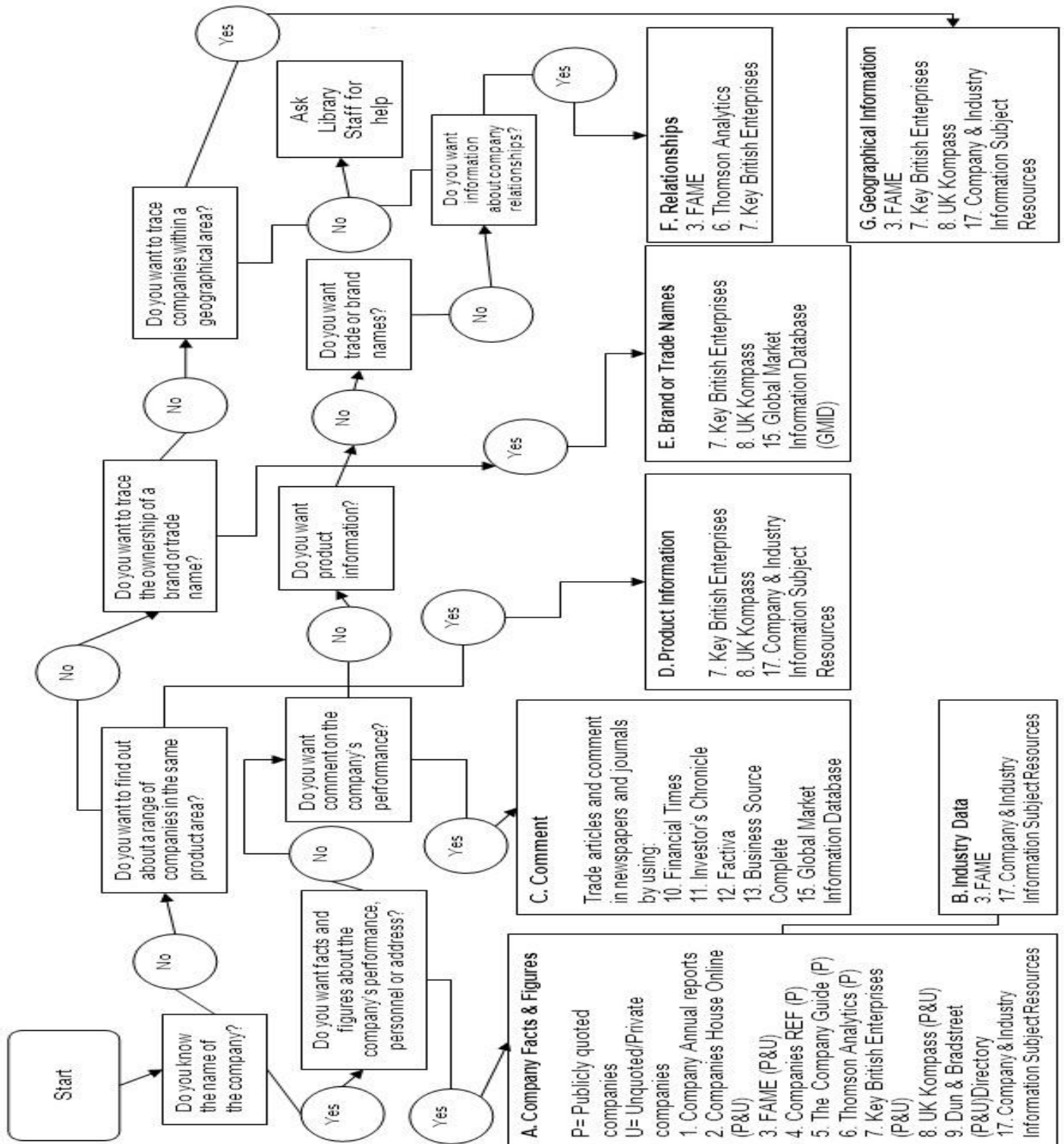
Talbot Campus, Fern Barrow, Poole, BH12 5BB, UK

For information and subject advice:

Tel: +44 (0) 1202 965959.

Note: the numbered resources relate to the corresponding number in the previous pages of this guide.

Remember: information about private companies is often more difficult to locate than information about publicly quoted companies (PLCs).



Business School Library Team
 bslibteam@bournemouth.ac.uk
 July 2011