





**BU**  
BOURNEMOUTH  
UNIVERSITY



# Why BU?



## To learn is to change

Be part of a learning community that strives to make an impact on our world, for a more sustainable, inclusive and healthy society.



## Two campuses

Talbot Campus & Lansdowne Campus are home to our teaching & faculties. Our sports activities are based at Chapel Gate, and we work with a number of partner institutions.



## One community

17,000 students, of which 2,500 are from over 130 countries.



## Many partners

From AFC Bournemouth to University Hospitals Dorset, and universities across the globe, BU is place of opportunity.

# 89%

of graduates in work or further study

HESA Graduate Outcomes 2022/23



# 21<sup>st</sup>

for Research Quality and 41<sup>st</sup> overall in the UK



# 8<sup>th</sup>

in the UK and 59<sup>th</sup> in the World



# 1<sup>st</sup>

for Mental Health & Wellbeing Support



# You'll get...

**21<sup>st</sup>**

of research rated  
as internationally-  
recognised or above\*



## Professionally-orientated degree

- Professional accreditations
- Placements
- Working with industry



## Incredible learning opportunities

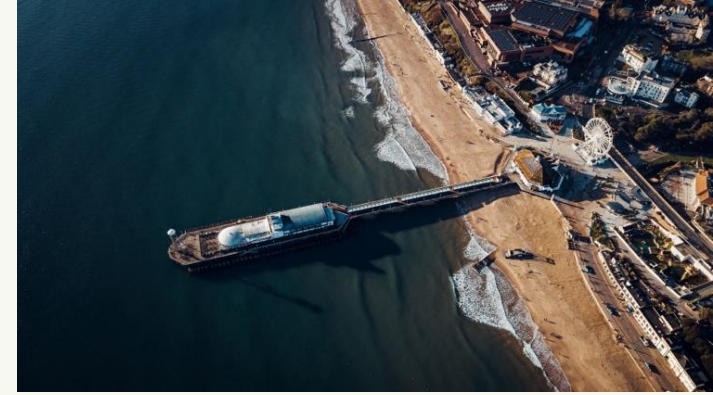
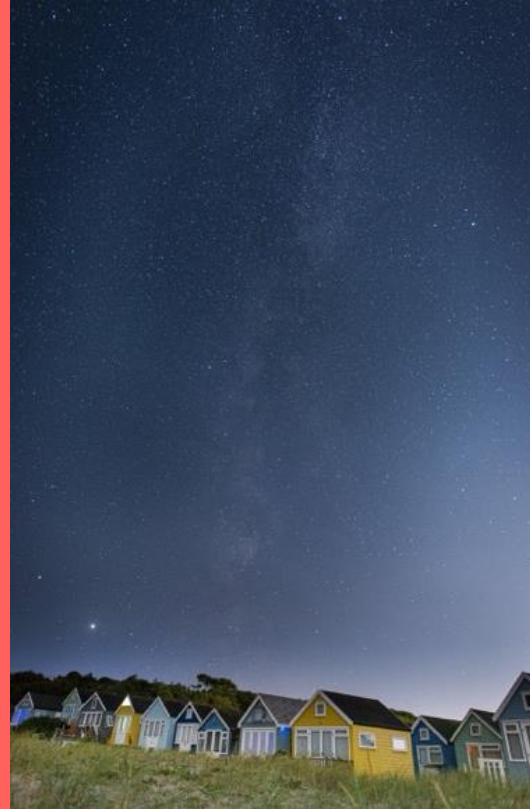
- Live research projects
- Guest lectures
- Study abroad



## Opportunities to support research that makes a real difference

- Helping people live better for longer
- Contributing to the creative and cultural industries

# Why you'll love Bournemouth



# Welcome to the Faculty of Health, Environment & Medical Sciences



## School of Life & Environmental Sciences

- Archaeology & Anthropology
- Biological and Biomedical Sciences
- Ecology & Wildlife Conservation
- Environmental Sciences
- Geography
- Forensic Investigation & Forensic Science
- Medical Sciences

## School of Applied Health & Exercise Sciences

- Occupational Therapy
- Operating Department Practice
- Paramedic Science
- Physiotherapy
- Sports Therapy
- Sport & Exercise Science

## School of Health & Care

- Adult Nursing
- Children and Young People's Nursing
- Mental Health Nursing
- Midwifery
- Public Health
- Social Work

# Our Global Strength & Distinction

- **Biomedical Science** – accredited by the Institute of Biomedical Science (IBMS)
- **Forensic Science & Investigation** – accredited by the Chartered Society of Forensic Sciences (CSFS)
- **Archaeology** – accredited by the Chartered Institute for Archaeologists (CIfA)
- **Geography & Environmental Sciences** – accredited by Royal Geographic Society / Institution of Environmental Sciences
- **Sport & Exercise Science** – endorsed by the Chartered Association of Sport and Exercise Sciences (CASES)
- Internationally recognised research and industry impact across all areas.



# Learning That Feels Real

- Real world simulation
- Hospital, community, environmental and sports placements
- Laboratory investigation
- Cutting edge laboratories and facilities including crime scene facilities
- Fieldwork & environmental sampling
- Case-based learning
- Research projects



# Campuses to be proud of



**Talbot Campus**

# Campuses to be proud of



Lansdowne Campus

# Facilities to be proud of



**41st**

of 139 institutions in  
BUCS leagues 2024/25



**Chapel Gate**

Multi-sports facility & Summer Ball Venue

# Caring for our world

What we've achieved so far:



**2,000+**

Solar panels have enabled us to avoid releasing over 550 tonnes of CO<sub>2</sub>e.



**Joint 59<sup>th</sup> in the world**

For our contribution to the UN Sustainable Development Goals.



**SDG 12 Joint 15th**

Recognising our commitment to responsible waste and energy management



**The first 'Refill' campus**

Use your water bottle at one of our 45 refill points on campus.



# Support & wellbeing

✓ AskBU – General Support

✓ On-site childcare facilities

✓ Additional Learning Support

✓ Careers advice & MyCareerHub

✓ On-site Police team

✓ Subject Librarians & Experts

✓ Faith & Reflection Service

✓ Advice (Students' Union)

✓ Student Wellbeing

✓ ResLifeBU



# Your induction to BU



Welcome  
email series

---



Meet other new students on  
The Ambassador Platform

---



A packed schedule of  
welcome events on campus

---



Welcome  
mobile application

---



SUBU We Are Freshers Guide,  
with free Freshers wristband

---

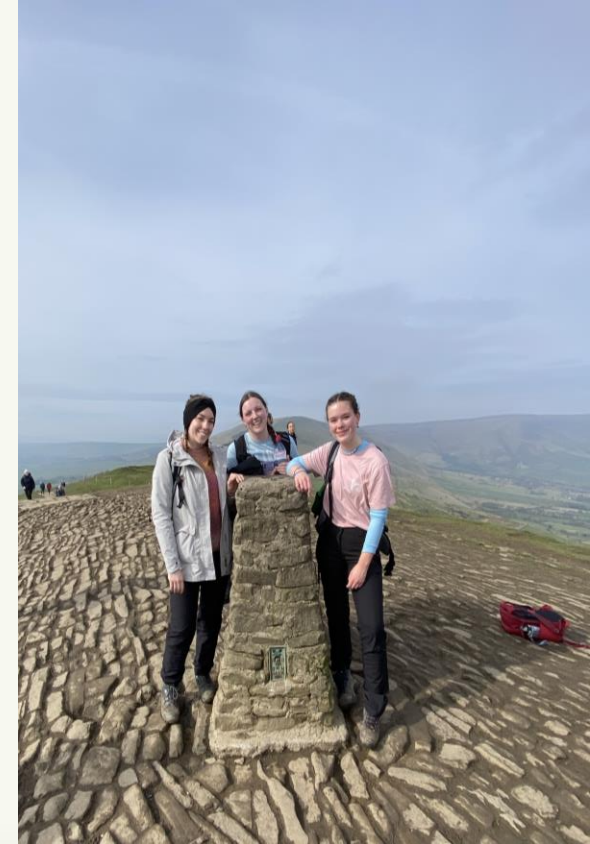


ResLifeBU events  
and Facebook Groups

---



# My time at BU



# My time at BU



Heidi

**BSc Geography**

Third Year



**My hometown**

| Somerset

**Best bits of BU**



- Field- trips
- Kind knowledgeable Lectures
- International Work Experience
- Societies for everyone

**Best bits of Bournemouth**



- Public transport Links: New Forest, Sandbanks, Studland.
- Paddle boarding: Christchurch
- Hiking: Old Harrys Rock
- The BIC: concerts !



Thank you

