



Presenter

Department of Archaeology and Anthropology

Our undergraduate programmes

Department of Archaeology & Anthropology

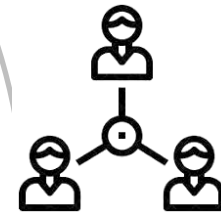


BA & BSc
(Hons)
Archaeology



BA (Hons)
Archaeology &
Anthropology

**Department of Social
Sciences & Social Work**



BA (Hons)
Sociology & Social
Anthropology

**Department of Life
& Environmental
Science**



BSc (Hons)
Archaeological,
Anthropological &
Forensic Sciences



BSc (Hons)
Anthropology

BSc (Hons)
Forensic
Investigation

BSc (Hons)
Forensic Science

Our undergraduate programmes



BSc (Hons)
Archaeology

- BSc Archaeology: practical, hands-on excavation, recording, analytical and interpretive skills with an emphasis on the use of sciences to help us learn more about people in the past.

Our undergraduate programmes



BA (Hons)
Archaeology

- BA Archaeology: practical, hands-on excavation, recording, analytical and interpretive skills with an emphasis on the use of humanities and social sciences to help us learn more about people in the past.

Our undergraduate programmes



BA (Hons)
Archaeology &
Anthropology

- BA Archaeology and Anthropology: understanding human societies around the world, past and present, using a range of techniques from both scientific and humanistic perspectives.

Our undergraduate programmes



BSc (Hons)
Anthropology

- BSc Anthropology: understanding human biological and cultural diversity today and in the past, studied from a primarily scientific but also a humanistic perspective.

Our undergraduate programmes

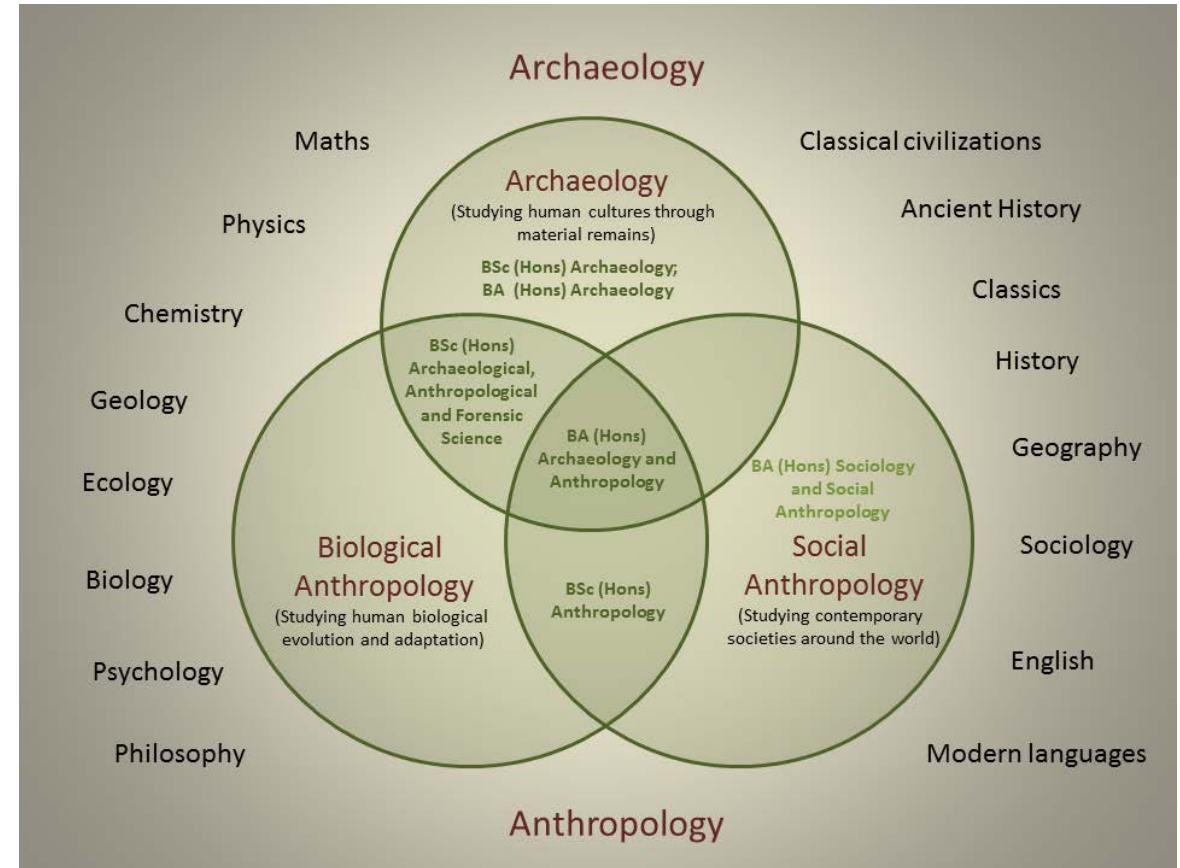


BSc (Hons)
Archaeological,
Anthropological and
Forensic Sciences

- BSc Archaeological, Anthropological and Forensic Sciences: the scientific collection and analysis of physical evidence to reconstruct past events either in an archaeological or in a legal (forensic) context.

Which programme is right for YOU?

- The programmes share many common units during the first year: straightforward transfer between most programmes gives you time to decide whether you're on the right programme for you.
- No essential subjects required for entry: almost any subject is relevant, and our programmes assume no prior knowledge.
- Entry requirements for all programmes:
 - A-Levels: 104 – 120 points
 - BTEC Extended Diploma: DMM



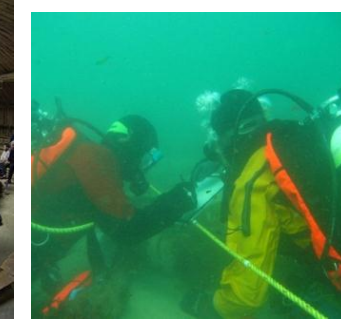
Why study archaeology and anthropology at Bournemouth?

- ✓ In 2017-18 we celebrated **50 years of archaeology** at BU: we are experienced and student-focused
- ✓ Our archaeology programmes are **accredited by CIFA** (the Chartered Institute for Archaeologists)/UAUK (University Archaeology UK)
- ✓ BSc Archaeological, Anthropological and Forensic Sciences have been awarded **Educational Recognition by CSFS** (the Chartered Society of Forensic Sciences)
- ✓ We are the **No.1** New University for archaeology research (REF 2014)



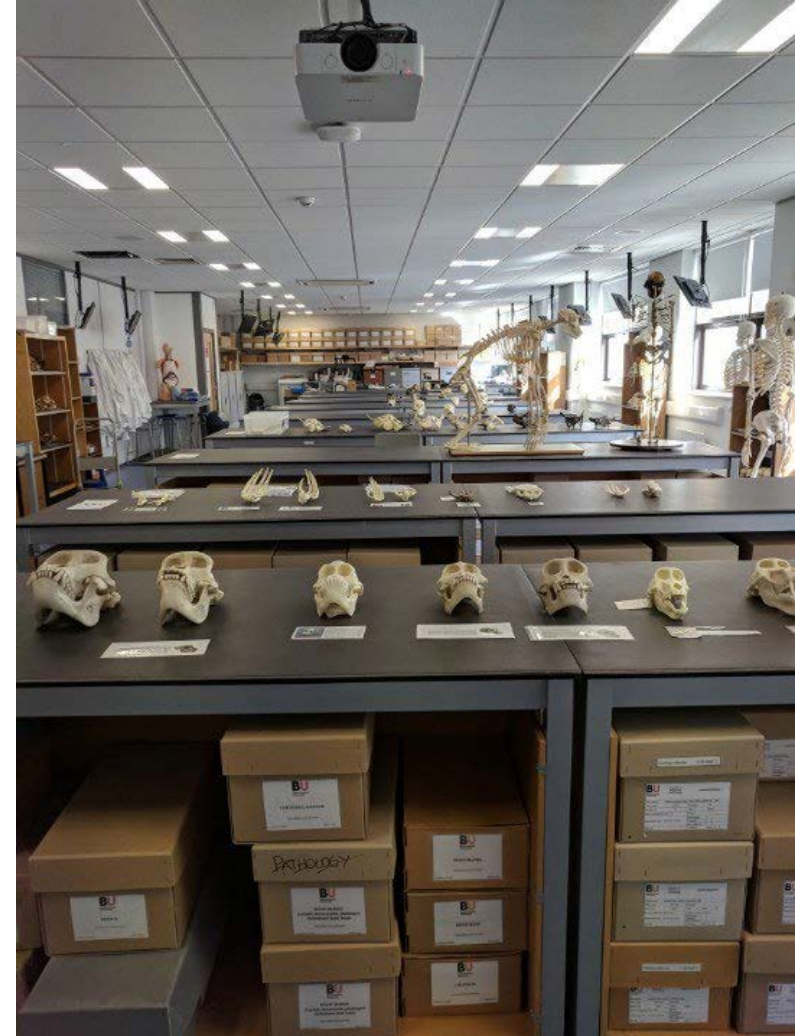
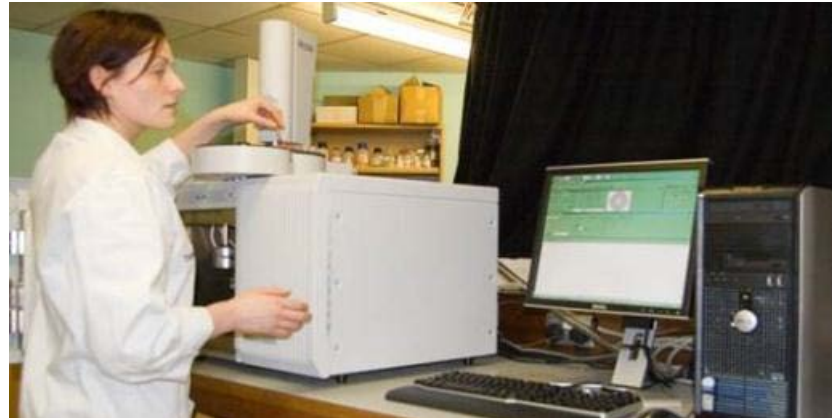
Studying at BU

- Studying archaeology and anthropology at Bournemouth involves a mix of hands-on practical work, including in the laboratory and in the field, traditional lectures, small-group seminars and fieldtrips.
- World-class facilities, including a dedicated anthropology laboratory with extensive archaeological and anthropological collections for teaching and learning, extensive stores of field kit available for student use, as well as a dedicated crime scene facility.
- All our laboratory facilities recently underwent a £2m upgrade to ensure they are state-of-the-art.
- 5-week training excavation for all students on archaeology-related programmes



@DurotrigesProject

Studying at BU: Outstanding facilities



Studying at BU: Working in the lab



Studying at BU: In the field



Experience, placements, study abroad and employability

- Short (5 wk) and long placements are available on all programmes.
- Opportunities to study abroad in Malta
- Dedicated placement team to help you find a placement and support you while you're there.
- Placements have included:
 - ✓ Archaeological and heritage-related placements across Europe: Bulgaria, Italy, Iceland, Portugal...
 - ✓ Museum placements: Nairobi, Cole Museum of Zoology, Dorchester Museum, Portland Museum etc.
 - ✓ Commercial Archaeology: Oxford Archaeology, Cotswold Archaeology, Pre-Construct Archaeology, PLACE19 excavation
 - ✓ Post-conflict reconciliation in Kosovo, Albania
 - ✓ Teaching English in Spain...
 - ✓ Many more



OK, but what do you DO with a degree in archaeology/anthropology?

Degree-specific:

- Commercial contractors and consultants
- Commercial Heritage, museums, conservation and tourism
- Teaching and further and higher education, research and academia
- Public/not-for-profit sectors: civil service, local and central government, teaching, social research and policy, health and social work, development
- Overseas agencies, international organisations, non-governmental organisations
- Charities
- Many others



General:

- Graduate schemes in all sectors
- Advertising, sales and marketing
- Media e.g. science journalism, TV/film production
- Personnel management, equality and diversity, industrial relations
- Chartered surveying, construction
- Science, laboratory work
- Financial services
- Management and retail
- Forensic science, scene of crime and police forces
- Data management
- Law
- Many others!



What can I do next?

- Follow us and others on social media!
- Societies and organizations
 - The Royal Anthropological Institute: <http://www.therai.org.uk/>
 - Chartered Institute for archaeologists: <http://www.archaeologists.net/>
 - Council for British Archaeology: <http://new.archaeologyuk.org/>
 - British Association of Biological Anthropologists and Osteoarchaeologists: <http://www.babao.org.uk/>
 - Chartered Society of Forensic Sciences: <https://www.csofs.org/>
- Magazines:
 - Current Archaeology: <https://www.archaeology.co.uk/>
 - New Scientist: <https://www.newscientist.com/>
- Events:
 - University Archaeology Day: <https://www.universityarchaeology.co.uk/>
 - London Anthropology Day: <https://londonanthropologyday.co.uk/>
- Excavate!
 - <http://new.archaeologyuk.org/fieldwork>
 - <https://www1.bournemouth.ac.uk/study/courses/durotriges-big-dig>





That's all Folks!

**Thank you for your interest in archaeology and anthropology at Bournemouth:
we hope to welcome you soon!**

**Please check out the website for further details or contact:
futurestudents@bournemouth.ac.uk
+44 (0)1202 961916**



**Bournemouth
University**



Please note: The detail, dates and additional fees stated are correct at the time of presentation (October 2021). The latest information can be found at www.bournemouth.ac.uk/courses.

Questions? We've got answers.
01202 961916
futurestudents@bournemouth.ac.uk