

A group of six diverse students are smiling and posing for a photo. They are standing in front of a large, colorful mural featuring abstract shapes and patterns in shades of blue, yellow, and white. The students are dressed in casual attire, including hoodies and sweaters. The overall atmosphere is positive and vibrant.

**BU**

Bournemouth  
University

**LEARN TO CHANGE**

Undergraduate study with BU

## Main contents

Course listing .....	2
Reasons to choose BU .....	4
Why we love Bournemouth .....	10
A place to call home .....	16
Places you could live .....	18
Accommodation: The student view .....	22
Campuses to be proud of .....	24
Your Students' Union .....	28
Happy and healthy .....	30
Additional learning support .....	32
Sport .....	34
Start here, work anywhere .....	36
Get ahead, stay ahead .....	38
Placements made easy .....	40
Ways to fund your studies .....	42
International students .....	44
International information .....	46
Open Days .....	48
Required subjects .....	92
Important information .....	96
Getting here .....	98
Index .....	102

## Courses

Our courses .....	49
Foundation Years explained .....	50
Accounting, Finance & Economics .....	52
Allied Health Professions & Social Work .....	54
Archaeology & Anthropology .....	56
Business & Management .....	58
Computer Animation, Games & Visual Effects .....	60
Computing & Informatics .....	62
Criminology & Sociology .....	64
Design & Engineering .....	66
Forensic Sciences .....	68
History & Politics .....	70
Journalism, English & Communication .....	72
Law .....	74
Life & Environmental Sciences .....	76
Marketing .....	78
Media, Photography & Music Production .....	80
Medical Sciences .....	82
Nursing & Midwifery .....	84
Psychology .....	86
Sport & Nutrition .....	88
Tourism, Hospitality & Events .....	90
Foundation & Top-up degrees .....	94

To learn is to change. It's what we're here to do. At BU we believe education can change the world – in big ways that change it for everyone, and smaller ways that change it for you.

However big the difference you want to make is, we can help you make it because we believe in change. We believe in difference. We believe in equality. We believe in opportunity. We believe in you.

Add the strength of your voice to those who are already with us. It's about being part of a

movement, a community, a family. It's about doing all that in a beautiful part of the world that's good for the soul, too. It's about heads full of learning, hearts full of hope, and shoes full of sand.

**We are Bournemouth University.  
We are a future that must be heard.**



# Course listing

We have over 80 degrees, split over 20 subject areas.  
Your future is just waiting for you to find it.

## Foundation Years 50

### Accounting, Finance & Economics

BA (Hons) Accounting	52
BA (Hons) Accounting & Finance	52
BSc (Hons) Economics	52
BA (Hons) Finance	52

### Allied Health Professions & Social Work

BSc (Hons) Occupational Therapy	54
BSc (Hons) Operating Department Practice	54
BSc (Hons) Paramedic Science	54
BSc (Hons) Physiotherapy	54
BA (Hons) Social Work	54

### Archaeology & Anthropology

BSc (Hons) Anthropology	56
BSc (Hons) Archaeological, Anthropological & Forensic Sciences	56
BA/BSc (Hons) Archaeology	56
BA (Hons) Archaeology & Anthropology	56

### Business & Management

BA (Hons) Business & Management (Economics)	58
BA (Hons) Business & Management (Entrepreneurship)	58
BA (Hons) Business & Management (Finance)	58
BA (Hons) Business & Management (Global Operations)	58
BA (Hons) Business & Management (HRM)	58
BA (Hons) Business & Management (Marketing)	58
BA (Hons) Business & Management (Project Management)	58
BA (Hons) International Business & Management	58

### Computer Animation, Games & Visual Effects

BA (Hons) Computer Animation & Visual Effects	60
BSc (Hons) Games Design	60
BSc (Hons) Games Programming	60

### Computing & Informatics

BSc (Hons) Business Computing with Analytics	62
BSc (Hons) Computer Science	62
BSc (Hons) Computing	62
BSc (Hons) Cyber Security Management	62
BSc (Hons) Cyber Security with Digital Forensics	62
BSc (Hons) Data Science & Artificial Intelligence	62
BSc (Hons) Networks & Cyber Security	62
BSc (Hons) Software Engineering	62

### Criminology & Sociology

BA (Hons) Criminology	64
BA (Hons) Criminology with Law	64
BA (Hons) Criminology with Psychology	64
BA (Hons) Sociology	64
BA (Hons) Sociology & Criminology	64
BA (Hons) Sociology & Social Anthropology	64

### Design & Engineering

BSc (Hons) Design Engineering	66
BEng/MEng (Hons) Engineering (Part-time)	66
BEng/MEng (Hons) Mechanical Engineering	66
BA/BSc (Hons) Product Design	66

### Forensic Sciences

BSc (Hons) Forensic Biology	68
BSc (Hons) Forensic Investigation	68
BSc (Hons) Forensic Science	68

### History & Politics

BA (Hons) History	70
BA (Hons) Politics	70

### Journalism, English & Communication

BA (Hons) Communication & Media	72
BA (Hons) English	72
BA (Hons) Multimedia Journalism	72
BA (Hons) Multimedia Sports Journalism	72

### Law

LLB (Hons) Law	74
LLB (Hons) Law, Media & Creative Industries	74
LLB (Hons) Law with Politics	74

### Life & Environmental Sciences

BSc (Hons) Biological Sciences	76
BSc (Hons) Ecology & Wildlife Conservation	76
BSc (Hons) Environmental Science	76
BSc (Hons) Geography	76

### Marketing

BSc (Hons) Marketing	78
BA (Hons) Marketing Communications	78
BA (Hons) Marketing Communications with Advertising	78
BA (Hons) Marketing Communications with Digital Media	78
BA (Hons) Marketing Communications with Public Relations	78

### Media, Photography & Music Production

BA (Hons) Film	80
BA (Hons) Film Production & Cinematography	80
BA (Hons) Media Production	80
BA (Hons) Music & Sound Production	80
BA (Hons) Photography	80
BA (Hons) Television Production	80

### Medical Sciences

BSc (Hons) Biomedical Science	82
BSc (Hons) Medical Science	82

### Nursing & Midwifery

BSc (Hons) Adult Nursing	84
BSc (Hons) Children's & Young People's Nursing	84
BSc (Hons) Mental Health Nursing	84
BSc (Hons) Midwifery	84

### Psychology

BSc (Hons) Psychology	86
BSc (Hons) Psychology with Counselling	86
BSc (Hons) Psychology with Forensic Investigation	86

### Sport & Nutrition

BSc (Hons) Nutrition	88
BSc (Hons) Sport Coaching	88
BSc (Hons) Sport Management	88
BSc (Hons) Sport & Exercise Science	88
BSc (Hons) Sports Therapy	88

### Tourism, Hospitality & Events

BA (Hons) Events Management	90
BA (Hons) International Tourism & Hospitality Management	90
BA (Hons) Tourism Management	90
BA (Hons) International Hospitality & Business Management	90
BA (Hons) International Tourism & Business Management	90

### Foundation degrees and Top-ups 94



### 1 We're a truly global university

We're 41st in the world and 1st in the UK in the *THE Young University Rankings 2023*. Our focus is all about getting you ready to work anywhere in the world.



### 3 We help people live better, for longer

From helping those with hip pain to tackling malnutrition in older people, we use all the tools and skills we have at our disposal to help improve the quality and the duration of people's lives.

## Reasons to choose BU



### 2 Our research makes a difference

We blend research, education and professional practice so that each informs the other. It means we produce research that makes a real difference to the world around us, something we're very proud of. As a student, you can even get involved with our research and help our academics make the world a better place.



### 4 We help to protect and preserve a sustainable environment

We are helping save endangered species, protect coastal and freshwater regions, and understand ecosystems. We learn from the past so that we can change the future. Our amazing location helps us demonstrate all these things in a hands-on, practical way for our students too.

## 5 We're ethically and environmentally responsible

Our courses are designed to produce ethical, sustainable business practices but we practise what we preach too!

- We are (joint) 29th internationally and 5th in the UK in the *THE University Impact Rankings 2023*
- 17 years of being a Fairtrade university
- EcoCampus Platinum award holder since 2016
- We are Top 10 in the People & Planet University League 2023/24.



## 6 We help to prepare for and recover from crisis

When things go wrong, we help governments and organisations to recover from them – and we also help them to be better prepared in the first place. From cyber security to responding to natural disasters, we help protect the safety of people all over the world.

## 7 We're helping creative and cultural industries to thrive

From our Oscar-winning graduates to our international reputation for tourism, the work we do adds enjoyment to life – from the holidays people go on, the movies they watch, and the history we help to preserve for them to enjoy.

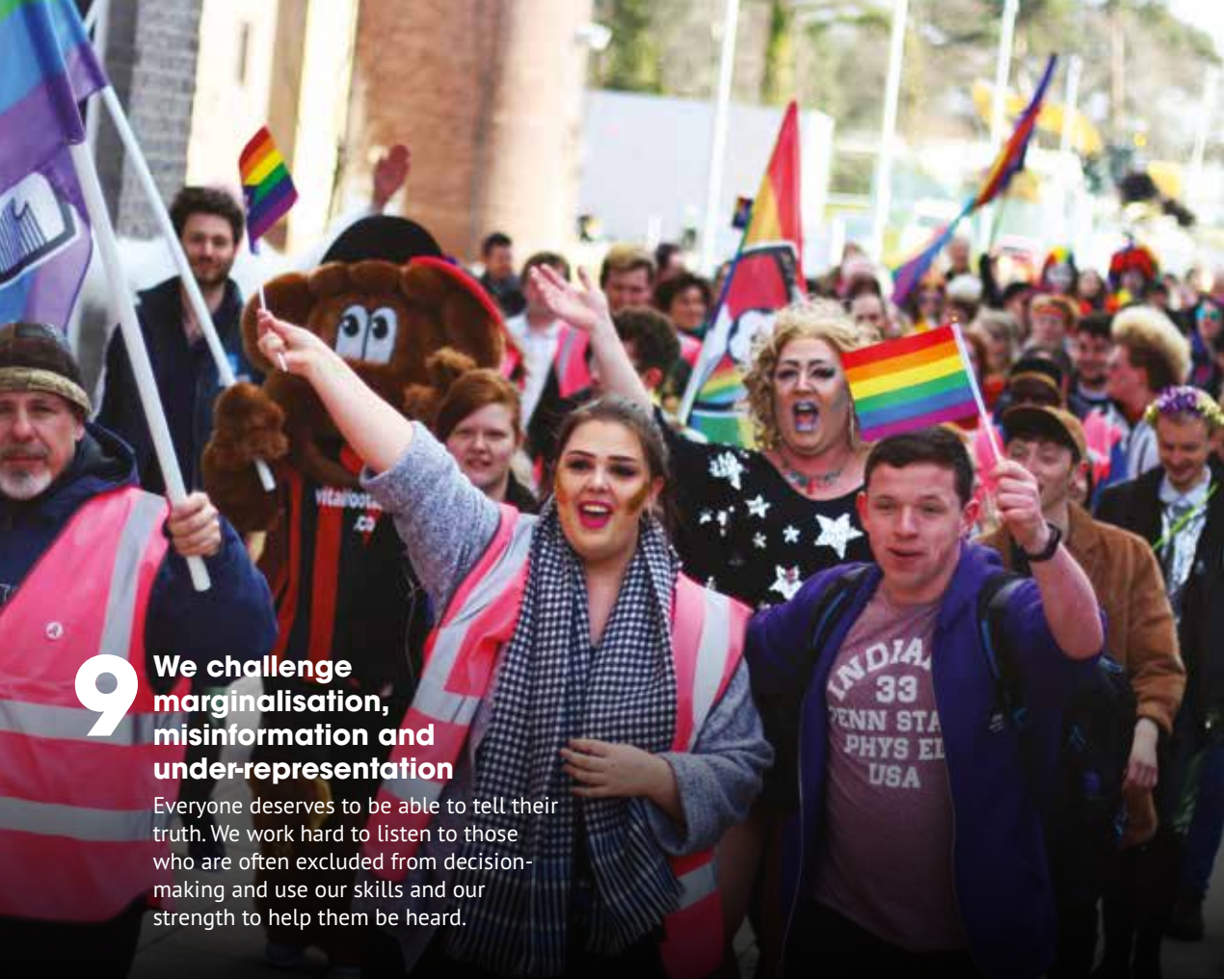


## 8 We celebrate equality, diversity and inclusivity

Everyone's welcome at BU, regardless of gender, sexuality, race or religion. As a BU student, you'll be joining a vibrant and diverse community where you can be you. Of course, how much you get involved in uni life is your decision, but the Students' Union (SUBU) offers lots of opportunities, including campaigning for change, a range of clubs and societies, and education on how to become a better ally.

We host events throughout the year to celebrate diversity in all its forms, including our annual Pride event. We also hold an ATHENA SWAN Bronze Award, reflecting our commitment to gender equality, a Race Equality Charter Bronze Award and we're a Stonewall Diversity Champion.





**9 We challenge marginalisation, misinformation and under-representation**

Everyone deserves to be able to tell their truth. We work hard to listen to those who are often excluded from decision-making and use our skills and our strength to help them be heard.

**11 Our graduates recommend us**

95% of our graduates would recommend BU to someone considering us as their choice for university, according to the most recent BU Alumni Survey (2020).



**10 We are a catalyst for growth in our region**

We want to help make Bournemouth the best it can be, so we use everything we learn on the global stage to help grow and develop the region. We take the best of Bournemouth around the world – and bring the best of the world back to Bournemouth.



**With so many success stories already behind us, isn't it time you joined us to start your own success story?**

See page 62 for details of Open Day dates.

# Why we love Bournemouth

**From cosy corners in cafes to the wide open spaces of the Jurassic Coast, Bournemouth and the surrounding area has something you'll fall in love with – whatever it is you're into.**

## Places to hang out

Bournemouth is not a repetitive, cookie-cutter kind of town that feels just like everywhere else. Sure, you'll find big chain restaurants and bars, but it's also teeming with independent bars and cafes where you can catch up with friends or simply watch the world go by. There are also plenty of clubs and music venues too, and the Students' Union at BU (SUBU) has its own venue, The Old Fire Station. It's the perfect mix of big and small, loud and quiet, busy and chilled, so whether you want a big night out or a lazy afternoon with a coffee, we've got you covered.



## Vibrant town

Bournemouth has a young feel, and it's cool and compact. The centre is just five minutes in your flip flops from the beach so you can get your tan on before a spot of retail therapy. Loads of stores also offer discounts with a TOTUM card, which you'll be entitled to as an NUS member.



## The Triangle

Bournemouth's answer to Soho and Greenwich Village is home to some great bars, clubs and restaurants. It's the epicentre of the town's thriving LGBTQ+ community, with a friendly atmosphere and a whole heap of personality. You'll also find decent pubs offering craft ales aplenty and affordable yet chic places to eat.



## That famous beach

With 14 km of golden sand, our famous beach holds four European blue flags for cleanliness and two Seaside Awards. It's always popping up at the top of international surveys asking for the world's best beaches, and it's definitely one of the most Insta-friendly places in town to get your friends back at home jealous.

There are two traditional English piers on it, but there's plenty of modern fun to be had too – a zipwire, climbing centre, and watersports aplenty help make it a fun place to spend a sunny Dorset day. Organised entertainment includes sports events like beach volleyball and sand polo to Friday night fireworks in August – there's nothing not to love.

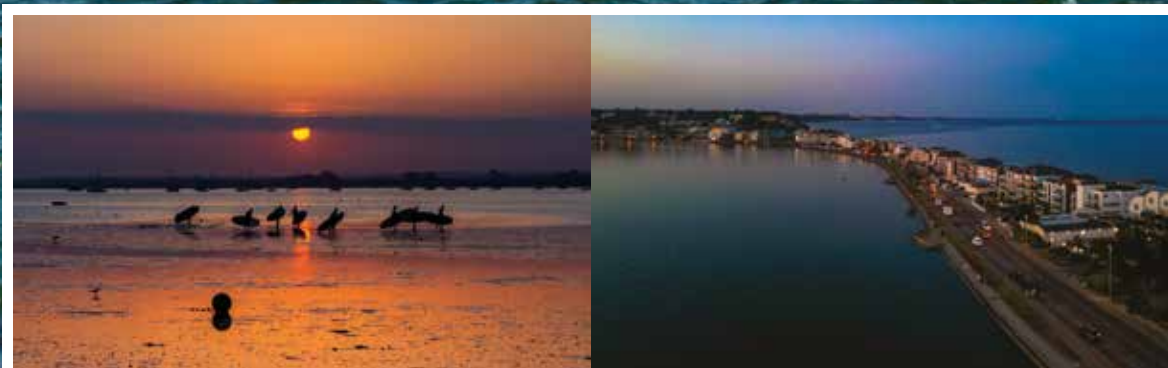
## Other places to play

Winton and Charminster are suburbs that sit between our Lansdowne and Talbot campuses, and lots of our students live there. They have a quirky, cosmopolitan feel. Expect your senses to be bombarded with the sights, sounds and smells of food from all over the world. Bedouin,

Lebanese, Turkish, Italian, Spanish, Greek, Thai, Indian, Chinese and Japanese food are just some of the cuisines that will be tempting you into the bars, restaurants, cafes and coffee shops that line the streets

## Sandbanks

If you fancy slipping into the shoes of a millionaire for a day, a wander round glamorous Sandbanks never disappoints. Nestled in among the mansions, penthouse flats and supercars, there are plenty more affordable ways to spend your time and money while you admire the stunning scenery.



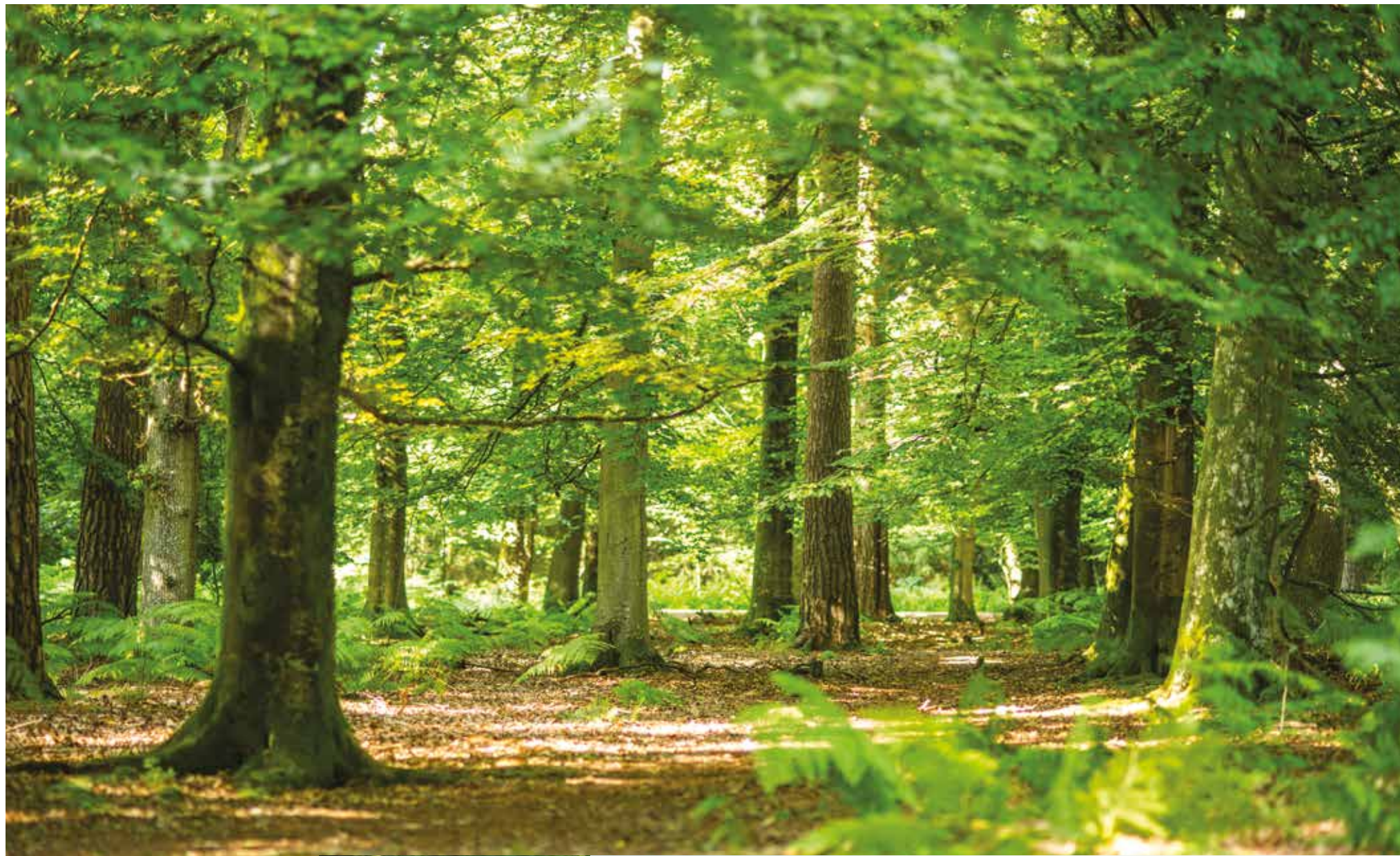
## Watersports

Whether you're a watersports pro or just want to see how long you can stand up for on a paddleboard, then Poole Harbour certainly won't disappoint.

You name it, you can do it there – windsurfing, kitesurfing, paddleboarding, surfing, kayaking, wakeboarding, jetskiing – the list goes on. Just a short journey away in the New Forest, you'll also find a water activity park, home to a Wipeout style assault course!







### Walking and riding

If you like to combine your sightseeing with a spot of exercise, there are loads of fantastic walks you can take in Bournemouth and the surrounding areas – and plenty of places offer bike hire, both in Bournemouth (including on the seafront) and in the New Forest. Some of the stunning walks to enjoy include Upton Country Park in Poole (the incredible views over Holes Bay and Poole Harbour are a must-see) and Swanage Bay.



### Hear what our students have to say!

“Bournemouth has so much open area to explore, from woodlands and forests to gardens and beaches,”

[www.bournemouth.ac.uk/student-blog](http://www.bournemouth.ac.uk/student-blog)



“Durdle Door is a natural limestone arch on the Lulworth Estate, just off an incredible beach. It can be busy, but it's incredible - you have to go and visit. It's certainly extremely photographic - I've got many photographs of it on both my camera and my phone. It's an amazing day trip.”

Melly,  
BA (Hons)  
Accounting & Finance

[www.bournemouth.ac.uk/day-trips](http://www.bournemouth.ac.uk/day-trips)





# A place to call home

**It's about more than a roof over your head - it's about living life the way you want. You can involve yourself as much or as little as you like. There's always something going on, but you'll always have a quiet private space you can call your own.**



## ResLifeBU

ResLifeBU is a programme of activities and support exclusively delivered across all sites within the BU accommodation portfolio. Our dedicated team is on hand in your accommodation to help you with your transition into university life and then assist you to develop the skills you need for independent living. They also run social events across the halls of residence and provide support with your wellbeing. Designed to make sure your experience doesn't stop when you step off-campus, ResLifeBU aims to make your first year at BU a great all-round experience.

## Great accommodation for everyone

For students with disabilities, we do have some dedicated accommodation available – just let us know what your needs are when you first register your interest in BU accommodation and we'll do everything we can to help. If you have a partner or a family, we can advise on alternative options.



## Everything you need

All the key things are included as part of your accommodation (or for a small extra fee):

- Fast Wi-Fi
- Well-equipped kitchens
- ALL bills included
- Laundry facilities (for a small fee)
- A BU bus pass (you can opt out though!)
- A programme of social activities
- Wellbeing support.

**Cranborne House  
Lansdowne Campus**



497  
6 or 7  
£145

Icons: House, 6 or 7 people, Internet access, Disabled access, En-suite



# Places you could live

Wherever your study is based, all our accommodation options are suitable locations for your new home!

**Key**

Total rooms Flat size Internet access En-suite Disabled access Indicative weekly rent\*

Icons: House, 2 people, Laptop, Shower, Wheelchair, £ symbol

\*Based on 2024/25 entry prices and inclusive of ResLifeBU, and Bus Pass.



**Chesil House  
Lansdowne Campus**

210  
6 & Studios  
£156

Icons: House, 6 & Studios, Internet access, Disabled access, En-suite



**Corfe House  
Poole**

308  
5 or 6  
£155

Icons: House, 5 or 6, Internet access, Disabled access, En-suite



**Dorchester House  
Lansdowne Campus**

590  
4-7 & Studios  
£169

Icons: House, 4-7 & Studios, Internet access, Disabled access, En-suite



**Lyme Regis House  
Lansdowne Campus**

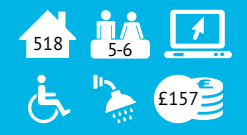


**Student Village  
Talbot Campus**

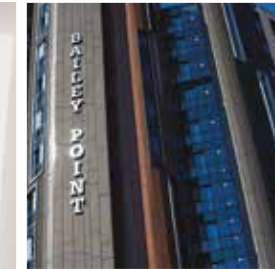


\*Availability for 2025 not confirmed at time of going to press

**Purbeck House  
Lansdowne Campus**



**Bailey Point  
Lansdowne Campus**



**How to book**

We offer an accommodation guarantee for undergraduate students, so long as you meet the relevant deadlines. You'll be able to choose and book the room of your choice once you meet the conditions of your offer. For more details, see [www.bournemouth.ac.uk/accommodation](http://www.bournemouth.ac.uk/accommodation).



# Accommodation: The student view

**We believe that every part of your time at BU should be memorable, and that starts with where you'll be waking up each morning to start your day. Take a look at what some of our students have said about their time living in Bournemouth.**



## The time of your life

"I am so jealous of everyone going into first year, you are in for the best experience of your life! I wish I could start it all over again! Dorset is a beautiful place; make sure throughout your time here you explore as much of it as possible – whether that's a pub lunch in the New Forest, a drive along the Jurassic Coast to all the cool places such as Durdle Door, Weymouth, Corfe Castle, Old Harry Rocks and Lyme Regis, or a hike up the Golden Cap and lunch in Seatown after."

**Tia**



## Country to town

"I live in quite a rural part of Norfolk. There's even a farm opposite my house! Coming to Bournemouth meant quite a change for me in that respect – it's a much more urban place to live. I thought it would take a lot of adjusting to that, but actually it's been pretty straightforward and I'm very used to it already."

**Will**



## Close to everything

"In my first year, I lived in Dorchester House, and I had an amazing time and met a lot of lovely people who lived in the flats above and beside me. It was only a short walk to many restaurants, pubs, and clubs that students frequently go to (especially Fire Station BU's student union!), so I did not need to get a bus or a taxi on the way there and if I was out I could walk back with my friends, or it was a quick taxi ride home!"

**Sarah**



## All about the friendship

"Coming to BU and not knowing anyone meant life in halls was absolutely ideal. Communities sprang up very quickly among those sharing the same blocks, so you make friends with far more people than just your flatmates. We'd all meet in the social outside spaces, so you gained a large circle of friends really quickly."

**Zeynep**



## Safe and secure

"As an international student, safety and security was a top priority. My BU accommodation had CCTV cameras throughout the building and secure access systems to ensure that only residents can enter the building. Additionally, there is an on-site management team available 24/7 to address any concerns or emergencies that may arise."

**Jain**





# Campuses to be proud of

From silent study spaces to technoboosts for group work, we've got you covered. On our campuses, you can study just how you want to. You'll study better when you've got access to all the facilities you need - so we do all we can to make it happen.

## See for yourself

Take our virtual tour. Scan the QR code or visit [www.bournemouth.ac.uk/virtual-tour](http://www.bournemouth.ac.uk/virtual-tour)



## Many sites, one community

Most of our courses are based on either our Lansdowne Campus, in the centre of Bournemouth, or our Talbot Campus, which is a self-contained site just a short bus ride away. We also have Chapel Gate Sports Campus, home to an outstanding array of sports facilities including 3G pitches, squash courts, archery, and pitches for football, rugby and hockey.

"I chose to study at BU due to its amazing, up-to-date facilities & equipment, strong industry connections, and prospects for additional opportunities."

**Q Amos,  
BA (Hons)  
Media Production**

## Learn where, when and how you want

Our academic facilities offer flexible learning spaces where you choose how to study. They've been designed to support the imaginative and collaborative ways we work. Our campuses are home to lecture theatres and seminar rooms with plenty of space, as well as the equipment needed for streaming and sharing, alongside outstanding specialist facilities.

## Industry facilities

When you start your career, you'll need to know how to use the industry-standard equipment that your colleagues will expect you to. That's why we have invested in hardware and software that mirror developments in industry, so you'll be using equipment that's the same as, or similar to, what you'll encounter in your first job.



"Getting hands-on using game engines and digital art software skills was enjoyable, challenging, and informative. Using industry-standard software was the perfect way of getting students prepared for working in industry."

**Jack Creasey,  
BSc (Hons)  
Games Design**



## Specialist facilities at a glance

Take a quick look at just some of what we offer our students!

- |                                     |   |                                  |
|-------------------------------------|---|----------------------------------|
| TV studios                          | Simulation residential flat for care scenarios    | Electronics design and demo labs |
| Editing suites                      | On-campus crime scene for forensics students      | Microbiology lab                 |
| Sound stage                         | Anthropology lab                                  | Scanning Electron Microscope lab |
| Audio studios                       | Collections storeroom of archaeological artefacts | Analytics lab                    |
| Radio studios                       | Microscopy lab                                    | Sports performance labs          |
| PC labs                             | Games development labs                            | Sports psychology lab            |
| Screening room                      | 3D printer  | Plinth room                      |
| Motion capture and green screen     | Prototyping workshops                             | Nutrition lab                    |
| Simulation operating theatre        | Stress and dynamics lab                           |                                  |
| Simulation hospital wards           |   |                                  |
| Simulation maternity birthing suite |   |                                  |



### The Poole Gateway Building

on Talbot Campus is home to new TV studios, editing suites, sound stage, audio studios, PC labs, screening room, a motion capture and green screen facility, and cross-faculty collaborative learning spaces.



"The skills sessions in the simulation room gave us the opportunity to put our theory into practice, such as equipment issuing or familiarising ourselves with different assessments."

**Gabriella Maraschin, BSc (Hons) Occupational Therapy**



### Libraries and learning resources

There's way more to our libraries than books. Our libraries on both campuses give you access to electronic, print and multimedia resources with staff on hand for support.

"Bournemouth University has great library facilities, at both the Talbot and Lansdowne campuses, as well as online through MyBU. There are thousands of online journals and articles, as well as online versions of books. These can be accessed both on and off campus, making the library resources available to students from home."

**Beth Cordon, BSc (Hons) Adult Nursing**

### The Bournemouth Gateway Building

on our Lansdowne Campus is mainly used by students in the Faculty of Health & Social Sciences, but is open and accessible to all students and staff. It is home to simulation suites including an operating theatre, hospital wards, a maternity birthing room and a residential flat for care scenarios – as well as an MRI scanner.





# Your Students' Union

**Run by students, for students, each university will have its very own Students' Union. At BU, ours is known as SUBU. As well as putting together fun social events, sports activities and societies, the SUBU offers support when you need it too. You can get involved as much or as little as you like to work around your studies – the opportunities are endless.**



## Get involved

SUBU has over 80+ clubs, groups and societies for you to join. They are a great way to meet new people, try new things and learn new skills. Whether you're a keen surfer, love performing or want to brush up on your academic skills, there will be a group for you.

You can also join SUBU's multi-award winning media team and host your own radio show, film your own TV series or write articles for their online news website.

If you fancy volunteering your time, you can give as little as a few minutes to helping others, or take the running of an entire project. We also have dedicated student groups for underrepresented communities, where we hold regular events. Whether you are Black, from an Asian, Arab and ethnic minority background, part of the LGBTQIA+ community, or a student parent, there will be a group for you!

## Socialise

The Old Fire Station (right next to the halls of residence at Lansdowne), is SUBU's very own night-time venue. It is home to a huge range of club nights, live music tours, massive student parties and side-splitting stand-up comedy.

Dylan's Kitchen and Bar on Talbot Campus also throws a range of events including weekly karaoke and quiz nights.

Closing the year, SUBU puts on the UK's biggest student festival – the SUBU Summer Ball. The event welcomes over 7,000 students each year and has seen huge headliners such as Bru-C, Shy FX, Songer and Caity Baser.

## Represent

SUBU offers leadership opportunities to all its members.

You could be involved as a Student Rep or in lots of other elected roles, gathering feedback from the student community and working with the university to improve the student experience.

The Representation department manages over 600 reps dedicated to improving courses through innovative ideas. You could even end up as one of the Full-Time Officers who lead the Students' Union.

## Support

SUBU has its own advice service, which is free, independent and confidential, to help ensure your time at BU runs smoothly. Whether you're feeling a little homesick, or you are after some financial or academic help, our trained advisers are on hand to listen and offer guidance and support.



# Happy and healthy

We want every member of our community to be at their very best while they are with us, so here are some of the ways we help you make it happen.



## Off to a great start

It starts before you even get here! You'll get arrivals information full of details about clubs and societies, events to attend, sports to try and more. You'll be able to find your tribe before you've even set foot on campus!

## Art, music, sport and culture

Whether your hero is Monet, Mozart, Messi or Marshmello, you can pursue your passion at BU. With a music centre, a number of choirs and orchestras, an art gallery and outstanding sports facilities, the only difficult decision you'll have to make is what you want to do first.



## A helping hand

It's not unusual to worry about settling into life at uni. Our AskBU team is on hand, and can point you in the direction of the right support for you – whether that's in person or digitally. We have a range of services to help you make Bournemouth your home – from an on-site Medical Centre, to a Faith & Reflection Service. For those that need it, we have Ofsted-registered childcare facilities as well as student parking options on site (full details and charges online) if you're living more than ten miles away while you're studying.



## Looking after your wellbeing

Whether you need support with adjusting to university life, or just want to talk about how you are feeling, we are here to help and have a wealth of support available, including online resources that you can access from anywhere.

# Additional learning support

**When you come to study with us, we want you to be able to fulfil your potential. We want all our students to develop into self-motivated, independent, lifelong learners and we offer a range of support to help you achieve this.**

Our supportive learning environment is particularly evident in the services we provide through our Additional Learning Support (ALS) team. This support is available to all our students, whether full or part-time, undergraduate or postgraduate, on or off campus.

We can support you with:

- Specific learning differences
- Physical/sensory impairments
- Medical conditions
- Mental health issues
- Temporary injuries.

If you have a condition which is likely to affect your personal learning over time, speak to us. If you think you have a

learning difficulty that has not been identified yet, get in touch with us and we can guide you through the process to find out.

It is important that you contact the Additional Learning Support (ALS) team as soon as possible if you think you will need additional support, because reasonable adjustments and one-to-one support are tailored to meet individual needs. The kind of support you are entitled to will vary considerably depending on many factors.

**Among the support we can offer is:**

- Information, advice and guidance for disability-related concerns

- Arranging screenings and Educational Psychology Assessments for dyslexia, dyspraxia and ADD
- Enabling students to learn specific skills and strategies that will enhance academic study
- Helping students develop employability skills needed during placements and beyond graduation
- Assisting with applications for Disabled Students' Allowances (DSA)
- Providing support to enable independent learning through one-to-ones or workshops
- Exam access arrangements
- Advising the faculties on reasonable adjustments that could be arranged so that disabled students are not disadvantaged.

To find out more, visit [www.bournemouth.ac.uk/als](http://www.bournemouth.ac.uk/als).

"BU prides itself on helping everyone reach their full potential no matter what and even if you need a little more support, there's nothing to be ashamed of. In fact a lot of people make use of the Additional Learning Support at BU. If you have impairments, specific learning differences or temporary injuries (and more) and you think it could affect your personal learning, talk to the ALS team right away.

**Danielle, BA (Hons) Marketing Communications**



# A sporting chance for everyone

Whether you're a top athlete or just want to keep fit and active, SportBU has something for everyone – and it's a great way to make new friends. With so much going on – and great membership rates – check our website to find out even more.



## Sports scholarships

If you're a talented athlete, you can apply for one of BU's Sports Scholarships, offering funding and access to services such as gym membership and chiropractic treatments. We are a Talented Athlete Scholarship Scheme (TASS) Accredited Centre (TAC) supporting athletes who have been nominated by their governing body as having future international potential. We offer Dual Career through TASS, meaning we support elite and high performance athletes to maintain their playing and academic opportunities.

See [www.bournemouth.ac.uk/ug-scholarships](http://www.bournemouth.ac.uk/ug-scholarships) to find out more.



## Fitness classes and courses

Taking a class is a great way to meet new people. Choose from spin, pilates, yoga, boxercise, step, circuits, abs and core, and much more (see website for full programme, including details of our new Les Mills equipment and virtual classes that can fit around your timetable). We also have courses in everything from kickboxing and karate to fencing and pole fitness.

## Campus Sport

You can get involved in basketball, netball, football, badminton, handball, boxing, baseball, and surfing, to name a few. Social drop-in sessions, clubs, courses, leagues and tournaments – take your pick. Campus Sport gives you plenty of opportunity to get involved in sport and activities on campus or at one of our local providers.

## Performance Sport

Represent BU at the highest level by joining the SportBU performance programme in a team or as an individual. Choose from over 60 teams that compete in the British Universities and Colleges Sport (BUCS) competitions, from cricket and tennis to golf, football, hockey and more. In the 2022/23 season, we were ranked 34th overall, out of 147 – testament to our commitment to competitive sport. We run trials in the first two weeks of the academic year and you can tell us about your sporting achievements before you get here.

## State-of-the-art community sports facilities

- Chapel Gate, our 65-acre sports facility, is home to football, (5-a-side, 7-a-side, 9-a-side, 11-a-side), rugby, hockey, table tennis, cricket, archery and rifle shooting
- Fitness suite – with up to 60 stations and various membership options
- Four-court sports hall with badminton, basketball and volleyball courts
- Spin studio, with Les Mills virtual classes available
- Two all-weather floodlit 3G artificial sports pitches
- Two dance and activity studios – over 50 Group Fitness classes a week, and a Les Mills virtual class programme
- Newly refurbished strength & conditioning suite
- Three treatment rooms (massage, physio, chiropractic care and alternative therapies available)
- Changing rooms and lockers.





# Start here, work anywhere

**Your story starts in Bournemouth, but it can take you anywhere. You'll find BU graduates all over the world, whatever your industry. With a BU degree, there's no limits to what you can do or where you can go.**

## Placements

Placements are a great way to put the skills you learn on your course into practice in a real setting. They may not be for everyone – and are optional on some degrees – but they can really help you to stand out when it comes to finding work. On our healthcare and social work courses, placements are mandatory and run throughout the degree but on all our other courses they are optional. You can take short placements (two to six weeks) or longer ones (30 weeks, which is often called a sandwich year). Whichever you choose, they are a great way to start growing your professional network and making new contacts.

The skills you'll pick up on placement will also help when it comes to starting your career – 90.7% of graduates from our undergraduate courses are in work or further study within 15 months of graduating.\*

## Accredited courses

Many of our courses are accredited by appropriate professional bodies, meaning your degree is recognised by potential employers as being professionally relevant and up to date. We also have excellent relationships with many multinational companies – from IBM to Mercedes-Benz.

## Working hand in hand with industry

Many of our staff have worked, or still work, in the industry that they lecture in. They bring their knowledge and experience to every lecture and seminar, as well as using it to design our courses – making sure you have the skills employers are looking for.

\*2020/21 Graduate Outcomes Survey



# Get ahead stay ahead

**Graduating with work and professional experience can make all the difference in the competitive job market. We can help you find the contacts and opportunities you need to stand out.**

## Careers support

Through our online careers system, our Skills Development Programme, and a team of careers advisers and faculty placement staff, we can help equip you with the skills and experience to stand out when it comes to securing your ideal work placement if you're taking one – and, of course, give you the best possible start to your career once you graduate.

## Graduate Skills Programme

Our Graduate Skills Programme helps you build professional skills alongside your studies. From

preparing for placements to impressing potential employers, it's packed with useful skills masterclasses, real-life challenges, digital resources and campus activities.

## International exchange

Did you know, you could even take your work placement opportunity abroad? This provides a truly global experience! At BU, we have 70 partner universities across the globe. All the teaching is in English and all your marks go towards your degree. We have a dedicated team who build and develop relationships with our partners, and seeing first-hand how your industry works in an international setting can really make sure your job application stands out.

## Time to get competitive

Securing a great work placement is just as competitive as securing a great job. You'll need to demonstrate talent, commitment and initiative – but we're here to help you along the way. You'll start making industry contacts in your first year, and you'll begin applying for placements in your second year. We have a team who can help you, and advise on how you can find the right kind of placement for you – as well as how to approach organisations you have identified as suitable for you.



## How a placement can kickstart your career

Many of our students return to their placement employer for their graduate role, with the placement year having demonstrated their worth to the organisation, as well as enabling the student to see what they can expect in a full-time role.



## Keep on coming back

Our students don't stop being part of our community once they graduate. Our alumni network sees lots of former students return to BU to pass on their experiences to the next generation. Lots of them also come back to recruit students for their new companies, as well as delivering guest lectures or workshops.



# Placements made easy

**Your placement might last a year or four weeks, and could be a required part of your course or an optional extra. Whatever form your placement takes, it will make a real difference to your CV, career, networking opportunities, skillset, and ability to study well. And you'll make a difference to your placement company too - working on real projects and bringing your perspective to what they do.**

## Long or short placement?

On some courses, a work placement is a mandatory part of the degree. Even if that's not the case on your course, every undergraduate student at BU has the chance to undertake a placement. If you're studying one of our Nursing, Midwifery or Allied Health Professional courses (Occupational Therapy, Physiotherapy, Operating Department Practice, Paramedic Science and Social Work), you'll undertake short placements throughout your course and will be placed at various NHS hospitals and medical centres throughout the south west.

## Finding the right organisation

Finding the ideal role and organisation takes time, research and preparation, and that's why many students start looking a year or so in advance. You'll be empowered to find placement opportunities that meet both your needs and the course requirements, but you won't be on your own. Our experienced placement team offers advice and guidance throughout the process, supplemented by our online careers centre.

Our Placement Co-ordinators will help you plan your placement, so you can be sure you'll gain the right experience. If that means a placement in another part of the UK, or even in another country, we can offer help and support.

## Support on placement

You're still very much a member of the BU community while you are on your placement. You'll be allocated a Placement Development Adviser who will support you throughout your placement. Their role is to work with you on a 1:1 basis to make sure that your time in industry is as valuable to you and your future career as possible.

## Tuition fees on placement

If you undertake a placement year, you'll still pay tuition fees, but they will be considerably lower than the taught years of your degree. This means that you'll still have access to all the support services on offer from both BU and SUBU.

You'll also still have access to all of the university's online and on-campus facilities while you are working, ensuring you're able to do any preparation needed ahead of your final year of study.

Short placements (typically between two and six weeks) and integrated placements on health and social care courses do not have fees.

## Getting paid while on placement

We would like all of our students to find paid work placements, and most do. We encourage all the employers we work with to provide at least a minimum wage to our students and many pay much more. If you are finding things difficult, you may still be eligible for financial support during your placement year.

# Ways to fund your studies



**When you've got the right financial support in place, you can concentrate on the stuff that really matters - settling in, excelling at your studies, and enjoying your time at BU.**

## Your fees for 2025/26

We'll publish the fees for 2025/26 on our website from summer 2024, and they will not increase while you study with us. You'll pay the same fee for each year of full-time study so you will know exactly how much your course will cost before you start and don't need to worry about the fees increasing. You'll find a list of what's included in your fees at [www.bournemouth.ac.uk/ug-courses](http://www.bournemouth.ac.uk/ug-courses). Our fees will vary depending on your status (home or international) and your level of study - Honours, Foundation or Top-up.

For details of the Tuition Fee Loan and the eligibility criteria, please visit [www.gov.uk/student-finance](http://www.gov.uk/student-finance)

## Scholarships, bursaries and discounts

We offer a range of financial support that you don't need to repay. We offer bursaries depending on your household income, or if you are joining university after leaving care. If you have sporting or musical achievements, we also have scholarships that you might be eligible for. To learn more, visit [www.bournemouth.ac.uk/ug-funding](http://www.bournemouth.ac.uk/ug-funding)

## NHS funding

Non-repayable funding of at least £5,000 per year is available for home students on eligible nursing, midwifery and some allied health courses. Visit [gov.uk](http://gov.uk) for full details.

## What about living expenses?

You can borrow money towards your living expenses during your time at BU through a Maintenance Loan. How much you can borrow will depend on your household income, and you can even borrow a smaller amount if you live at home while studying.

## How do you repay your loans?

Repaying your loans is easy, and doesn't involve lots of complicated forms. Your Tuition Fee Loan will be combined with your Maintenance Loan, and your repayments will be calculated and collected automatically through the tax system. However, you don't need to start making any repayments until you are earning over £25,000 a year. Once you start earning that much, you'll pay back 9% of any more money you earn. You'll find more information at

[www.bournemouth.ac.uk/loans](http://www.bournemouth.ac.uk/loans) or [www.gov.uk/student-finance/repayments](http://www.gov.uk/student-finance/repayments)

## If you're an international student

Refer to International Students at BU section on page 44.

# International students at BU

**We ensure every international student feels welcomed and their time at BU is a successful and truly enriching experience. That's why extra academic and pastoral support is available help with settling into student life in the UK.**

## Settling in

You'll receive a comprehensive induction programme, covering practical aspects of living in the UK, as well as opportunity to meet other international students at BU.

Exchange students starting a BU course in January will have a tailored orientation programme.

## Immigration and visa advice

Our fully trained immigration advisers can provide information and free advice to students.

## Careers and employment

Get access to Student Circus, the award-winning job search platform for international students. Tailored support, including CV preparation and practice interviews are also provided by our CareersBU team.

## Faith and reflection centre

A space to contemplate and pray, with a dedicated Islamic prayer room, a Kosher kitchen and multi-faith chaplaincy services.

## Cultural events

Join year-round events on campus and around Bournemouth celebrating the diversity of our community.

## Scholarships

For undergraduate international students, BU scholarships are limited to Music and Sports scholarships. Funding may be available externally, with specific eligibility requirements. More information is available on the UCAS website at [www.ucas.com/money-and-student-life/money/scholarships-grants-and-bursaries/eu-and-international-students](http://www.ucas.com/money-and-student-life/money/scholarships-grants-and-bursaries/eu-and-international-students).

## US Federal Loan/Aid

The OPE ID for BU is 033503. If you meet the eligibility requirement, you can apply this funding to your studies at BU. Find out more [www.bournemouth.ac.uk/usa](http://www.bournemouth.ac.uk/usa)

## International partnerships

As a globally connected university, BU has research,

exchange, and teaching links with colleges and universities worldwide, fostering a diverse and dynamic learning experience for our students. [www.bournemouth.ac.uk/global-partnerships](http://www.bournemouth.ac.uk/global-partnerships) for more details.

## Meet BU in your country

We regularly travel abroad to meet prospective students and parents face to face and discuss their plans to study in the UK. We also partner with reputable agents, who represent BU to provide in-country support. If you cannot see us in person, we also host webinars, Q&A sessions and social media groups throughout the year. To find out more, please visit [www.bournemouth.ac.uk/overseas-events](http://www.bournemouth.ac.uk/overseas-events)

Follow us on Instagram and Facebook @BUinternational or visit [www.bournemouth.ac.uk/hello-international](http://www.bournemouth.ac.uk/hello-international)



"The beautiful beach, the welcoming town atmosphere, the university's excellent reputation – Bournemouth is a place to build a promising future. I'm confident that my journey here will be academically fulfilling and I am very happy with my decision to study at Bournemouth University"

**Goda Bendaraviciute,**  
BA (Hons) Marketing Communications  
with Digital Media







## Academic requirement for entry

### For Honours (Bachelor's) degrees, qualifications we accept are:

- BU International College preparatory programmes (see overleaf)
- International or European Baccalaureate (IB/EB)
- French Baccalaureate
- Cambridge Pre-U Diploma
- High School leaving examinations considered to be of an equivalent level to UK A-level examinations, including:
  - Hong Kong HKDSE Diploma
  - Irish Leaving Certificate
  - USA High School Diploma (plus SAT, AP or ACT)
  - All India Senior School Certificate Examination (Standard XII)
  - Bachillerato (Spanish Baccalaureate)
  - Apolytirion (Cyprus and Greece)
  - Diploma di Esame di Stato (Italy)
  - Chinese Senior High School Graduation Certificate (Huikao) or Gaokao

If you are studying for a qualification that is not listed, you can contact us for more information about whether we accept it.

### For one-year BA (Hons) or BSc (Hons) Top-up degrees (equivalent to final year entry) the following qualifications are accepted:

- Higher National Diploma (HND)
- Foundation degree (FdA/FdSc)
- Two or three years of university level study with a minimum of 120 European Credit Transfer System (ECTS) credits (or equivalent). Previous qualifications should be in the same or a closely-related subject area.

# International entry requirements

**International students are an essential part of the BU community, so we accept a wide range of overseas qualifications. We have a dedicated team to make applying smoother, and to help you though the process.**

**Visit [www.bournemouth.ac.uk/international](http://www.bournemouth.ac.uk/international) for more info.**

## European Credit Transfer System (ECTS)

BU accepts ECTS credits for entry to its courses. (If you're studying an undergraduate course in an EU country, your qualification will probably be graded using ECTS credits.) One ECTS credit is equivalent to two BU academic credits. Get in touch with our International Admissions Team to confirm the number of credits you will need for the course you are interested in.

## English language entry requirements

### Normally a minimum of:

- IELTS (Academic) 6.0 overall, with a minimum score of 5.5 in each component
- IB Diploma English mark of at least 5 (good)
- BU International College Pre-Sessional English programme, or a pre-sessional course recognised by BU
- Other English language qualifications accepted, refer to [www.bournemouth.ac.uk/english-comparison-scores](http://www.bournemouth.ac.uk/english-comparison-scores)

If you have other evidence of your English language proficiency (e.g. you have an equivalent English language qualification, you received the majority of your education in English, or you have a degree in English language/literature), indicate this on your application form as it may be taken into consideration.

You may need a higher score for some courses where communication is especially important. Check your course description for English language requirements and component scores.



## BU International College preparatory programmes

Students who need an extra year of English or academic enhancement programme before starting their course at BU may choose to enrol at BU International College.

- Partnership with Kaplan to guarantee progression to a Bachelor's degree at BU on successful completion of the preparatory or pathway course
- **International Foundation Certificate** courses offered in: Business, Law or Finance, Computing, Media & Communications, Science, Events, Tourism & Hospitality Management
- **International Year One** to gain fast-track entry to the second year of a Bachelor's degree in business-related, media-related and tourism-related subjects at BU
- **Preparatory English and pre-sessional English courses** with multiple start dates available throughout the year
- Guaranteed accommodation for all students who apply within the deadline
- Purpose-built International College building
- Access to BU facilities
- Multiple start dates to suit you
- Dedicated academic and pastoral support

For more information please visit [www.bournemouth.ac.uk/preparatory-programmes](http://www.bournemouth.ac.uk/preparatory-programmes)

Questions? Contact our International Admissions Team [www.bournemouth.ac.uk/international-enquiries](http://www.bournemouth.ac.uk/international-enquiries)



# Our courses

Check our website for the latest information about all of our degrees, including new courses and ways to study our existing qualifications.

Foundation Years explained .....	50
Accounting, Finance & Economics ..	52
Allied Health Professions & Social Work .....	54
Archaeology & Anthropology .....	56
Business & Management .....	58
Computer Animation, Games & Visual Effects .....	60
Computing & Informatics .....	62
Criminology & Sociology .....	64
Design & Engineering .....	66
Forensic Sciences .....	68
History & Politics .....	70
Journalism, English & Communication .....	72
Law .....	74
Life & Environmental Sciences .....	76
Marketing .....	78
Media, Photography & Music Production .....	80
Medical Sciences .....	82
Nursing & Midwifery .....	84
Psychology .....	86
Sport & Nutrition .....	88
Tourism, Hospitality & Events .....	100

## Open Days

You're bound to have lots of questions and our Open Days can help you get the answers you are looking for. Whether it's a visit to our campuses, a virtual tour online, or joining us at an international event, we're looking forward to meeting you.

### Dates:

- Saturday 12 October 2024
- Saturday 26 October 2024
- Saturday 16 November 2024
- Wednesday 15 January 2025
- Saturday 14 June 2025



# Foundation Years explained

**Foundation Years are an alternative route to studying a full degree, involving an initial year of study that will enable you to progress on to the first year of one of our eligible undergraduate degrees. A Foundation Year is not the same as a Foundation degree. A Foundation Year gives you access onto a degree course, whereas a Foundation degree is a standalone qualification equivalent to the first two years of a degree. If you are looking for information about the Foundation degrees we offer, see page 96.**

## Who is a Foundation Year for?

A Foundation Year could be right for you if:

- You don't have the right qualifications for a full degree in your chosen subject
- You have the qualifications but don't feel ready for degree-level study yet
- You are returning to study and feel you need some help to get up to speed with the demands of learning before starting an undergraduate degree.

## What are the entry requirements?

For entry onto one of our Foundation Year courses, you will need 48-72 UCAS tariff points. There are no Level 2 requirements.

## Making sure you are ready

Our Foundation Years are not an extra year studying your chosen degree subject; rather a study option

for you to gain a strong foundation of knowledge in certain disciplines. We are already running Foundation Years that will give you a grounding in Science, Business & Management, Creative Industries, Media & Communication, Engineering and Technology. See [www.bournemouth.ac.uk/foundation-years](http://www.bournemouth.ac.uk/foundation-years) for the latest information.

## Next steps

Successful completion of your Foundation Year will give you a guaranteed place on the degree for which you originally applied. However, each of our Foundation Years prepares you for a wide range of our full degrees, so you'll have flexibility when you have successfully completed your Foundation Year of study if you want to look at other degrees at BU.

**What can I study?** We offer Foundation Years on the following degrees:

<b>Accounting, Finance &amp; Economics</b>	
BA (Hons) Accounting .....	52
BA (Hons) Accounting & Finance .....	52
BSc (Hons) Economics .....	52
BA (Hons) Finance .....	52
<b>Allied Health Professions &amp; Social Work</b>	
BSc (Hons) Occupational Therapy .....	54
BSc (Hons) Operating Department Practice .....	54
<b>Business &amp; Management</b>	
BA (Hons) Business & Management .....	58
BA (Hons) Business & Management (Economics) .....	58
BA (Hons) Business & Management (Entrepreneurship) .....	58
BA (Hons) Business & Management (Finance) .....	58
BA (Hons) Business & Management (Global Operations) .....	58
BA (Hons) Business & Management (HRM) .....	58
BA (Hons) Business & Management (Marketing) .....	58
BA (Hons) Business & Management (Project Management) .....	58
BA (Hons) International Business & Management .....	58
<b>Computer Animation, Games &amp; Visual Effects</b>	
BA (Hons) Computer Animation & Visual Effects .....	60
BSc (Hons) Games Design .....	60
BSc (Hons) Games Programming .....	60
<b>Computing &amp; Informatics</b>	
BSc (Hons) Business Computing with Analytics .....	62
BSc (Hons) Computer Science .....	62
BSc (Hons) Computing .....	62
BSc (Hons) Cyber Security Management .....	62
BSc (Hons) Cyber Security with Digital Forensics .....	62
BSc (Hons) Data Science & Artificial Intelligence .....	62
BSc (Hons) Networks & Cyber Security .....	62
BSc (Hons) Software Engineering .....	62
<b>Criminology &amp; Sociology</b>	
BA (Hons) Criminology with Law .....	64
<b>Design &amp; Engineering</b>	
BSc (Hons) Design Engineering .....	66
BEng/MEng (Hons) Mechanical Engineering .....	66
<b>Forensic Sciences</b>	
BSc (Hons) Forensic Biology .....	68
BSc (Hons) Forensic Science .....	68
BSc (Hons) Forensic Investigation .....	68
<b>History &amp; Politics</b>	
BA (Hons) History .....	70
BA (Hons) Politics .....	70
<b>Journalism, English &amp; Communication</b>	
BA (Hons) Communication & Media .....	72
BA (Hons) English .....	72
BA (Hons) Multimedia Journalism .....	72
BA (Hons) Multimedia Sports Journalism .....	72
<b>Law</b>	
LLB (Hons) Law .....	74
LLB (Hons) Law with Politics .....	74
LLB (Hons) Law, Media & Creative Industries .....	74
<b>Life &amp; Environmental Sciences</b>	
BSc (Hons) Biological Sciences .....	76
BSc (Hons) Ecology & Wildlife Conservation .....	76
BSc (Hons) Environmental Science .....	76
BSc (Hons) Geography .....	76
<b>Marketing</b>	
BSc (Hons) Marketing .....	78
BA (Hons) Marketing Communications .....	78
BA (Hons) Marketing Communications with Advertising .....	78
BA (Hons) Marketing Communications with Digital Media .....	78
BA (Hons) Marketing Communications with Public Relations .....	78
<b>Media, Photography &amp; Music Production</b>	
BA (Hons) Film .....	80
BA (Hons) Media Production .....	80
BA (Hons) Music & Sound Production .....	80
BA (Hons) Photography .....	80
BA (Hons) Film & TV Production .....	80
<b>Medical Sciences</b>	
BSc (Hons) Biomedical Science .....	82
BSc (Hons) Medical Science .....	82
<b>Nursing &amp; Midwifery</b>	
BSc (Hons) Adult Nursing .....	84
BSc (Hons) Mental Health Nursing .....	84
BSc (Hons) Midwifery .....	84
<b>Psychology</b>	
BSc (Hons) Psychology .....	86
BSc (Hons) Psychology with Counselling .....	86
BSc (Hons) Psychology with Forensic Investigation .....	86
<b>Sport</b>	
BSc (Hons) Nutrition .....	88
BSc (Hons) Sport & Exercise Science .....	88
BSc (Hons) Sport Coaching .....	88
BSc (Hons) Sport Management .....	88
<b>Tourism, Hospitality &amp; Events</b>	
BA (Hons) Events Management .....	90
BA (Hons) International Hospitality & Business Management .....	90
BA (Hons) International Tourism & Business Management .....	90
BA (Hons) International Tourism & Hospitality Management .....	90
BA (Hons) Tourism Management .....	90

# ACCOUNTING, FINANCE & ECONOMICS

Our experienced team bring this subject to life, reflecting the latest developments in the industry as well as incorporating their own research into what you'll learn.

## What we offer

Course	UCAS Code	UCAS Tariff	BTEC Ext. Diploma	Duration (years)	Placement
BA (Hons) Accounting*	N423	104 - 120	DMM	3 4	None 30 weeks
BA (Hons) Accounting & Finance*	N420	104 - 120	DMM	3 4	None 30 weeks
BSc (Hons) Economics*	L100	104 - 120	DMM	3 4	None 30 weeks
BA (Hons) Finance*	NN23	104 - 120	DMM	3 4	None 30 weeks

Placements: 30 weeks is a minimum and can be made up of multiple placements instead of one longer placement.

\*These courses have a Foundation Year option for students who do not meet the standard entry requirements. See page 50 for more details.

## Is BU right for you?

- A common first year means you can make an informed choice about how to specialise throughout the rest of your course to shape your career.
- We're accredited by the Association to Advance Collegiate Schools of Business (AACSB) – an accreditation held by fewer than 6% of the world's business schools and one that requires us to meet extremely high levels of quality in all areas of our activity.
- A 30-week placement opportunity for every student will give you practical experience as part of your studies.
- You'll have the opportunity to attend a five-day intensive study programme abroad working on case studies and financial analysis techniques with other students from across Europe to experience international collaboration.
- At £41,200, the median earnings of BU graduates in this subject area after five years is 22% more than the national average (Discover Uni stats, 2023).

**“My tutors provided great support and I was able to gain an abundance of knowledge that has prepared me for my future career. Not only this, but the people I met along my journey have provided me with essential interpersonal skills which will forever be of use to me.”**

Tyrell Catumba, graduated from our BSc (Hons) Economics degree and stayed with us to study MSc Finance too.

#BelongAtBU



## PEOPLE AND PROFITS

Our research into ethical and sustainable business behaviour informs our courses. Our work into ensuring supply chains run as efficiently as possible will help the organisations of tomorrow to keep important items like fresh food at affordable prices.

### Back once again

Many of our students perform so well on their placement year that they are invited back to join their placement firm once they graduate. That's what happened to Shannon Knight, one of our Accounting graduates, who is now a Chartered Financial Planner at FP Wealth Management.

### Experience new things

The opportunities for self-development extend outside the lecture theatre. Just ask student Nicole Chee, who was elected as a Student Rep with responsibility for feeding the opinions of her fellow students back to the team that delivers her course – making sure that everyone's voice is heard.



Learn more: [www.bournemouth.ac.uk/ug-afe](http://www.bournemouth.ac.uk/ug-afe)

# ALLIED HEALTH PROFESSIONS & SOCIAL WORK

Our relationships with local and national health and social care providers inform our curriculum, as well as giving you the chance to undertake exciting, relevant practice placements.

## What we offer

Course	UCAS Code	UCAS Tariff	BTEC Ext. Diploma	Duration (years)	Placement
BSc (Hons) Occupational Therapy*	B930	120 - 136	DDM	3	Integrated
BSc (Hons) Operating Department Practice*	B991	104 - 120	DMM	3	Integrated
BSc (Hons) Paramedic Science (R)	86G3	112 - 128	DMM	3	Integrated
BSc (Hons) Physiotherapy (R)	B160	128 - 144	DDM	3	Integrated
BA (Hons) Social Work	L500	112 - 128	DDM	3	Integrated

All these courses feature integrated placements, which are undertaken as part of your studies.

\*These courses have a Foundation Year option for students who do not meet the standard entry requirements. See page 50 for more details.

R: Required subjects: see page 92 for more details.

## Is BU right for you?

- Learn in practice simulation suites that mirror both clinical and community workplace settings and provide a safe environment for you to practise your skills before heading out on placement, including our purpose-built ambulance simulation suite, hospital wards and community home settings.
- Develop your skills via BU's network of integrated practice placements in NHS Trusts, community settings and local authorities across the south.
- All courses benefit from accreditation or links with professional bodies such as the College of Paramedics, the Chartered Society of Physiotherapy (CSP), the Royal College of Occupational Therapists (RCOT), the Health & Care Professions Council (HCPC) and Social Work England.
- Study in an environment that generates life-changing research across health and social care.

**“The small cohort created amazing learning opportunities as we worked together in small groups with frequent feedback from the lecturers. Over the three years, everyone has formed great friendships with both the cohort and the lecturing staff.”**

Molly Griffiths, BSc (Hons) Physiotherapy

#BelongAtBU

## PROMOTING HUMAN RIGHTS

People with conditions such as dementia can often feel that they are not even consulted when important decisions are made about them. Our researchers have produced an online training tool that can be used by health and social care professionals as well as members of the public to navigate the complexities of the Mental Capacity Act 2005. The Mental Capacity Toolkit ensures that those with dementia and similar conditions are encouraged and supported to make their own decisions and retain their autonomy.



### Experienced staff

On our courses you'll be learning from staff who have practised (or are still practising) in their chosen fields. They bring their real-work experiences to their lectures and seminars – something that BSc (Hons) Occupational Therapy student Yaa Agyekumwaa Debra found particularly valuable.



### Practical placements

Placements on these courses are integrated throughout the degree rather than being a full placement year. That means you are constantly putting what you are learning into practice, evolving your learning and understanding as you go.



Learn more: [www.bournemouth.ac.uk/ug-ahp](http://www.bournemouth.ac.uk/ug-ahp)

# ARCHAEOLOGY & ANTHROPOLOGY

We've been delivering courses in this area for over 50 years, so you can benefit from our vast experience coupled with access to the latest equipment being used in the field – and our world-leading research.

## What we offer

Course	UCAS Code	UCAS Tariff	BTEC Ext. Diploma	Duration (years)	Placement
BSc (Hons) Anthropology	J21B	104 - 120	DMM	3 4	5 weeks 30 weeks
BSc (Hons) Archaeological, Anthropological & Forensic Sciences	4K2M	104 - 120	DMM	3 4	5 weeks 30 weeks
BA/BSc (Hons) Archaeology	BA: C786 BSc: F400	104 - 120	DMM	3 4	5 weeks 30 weeks
BA (Hons) Archaeology & Anthropology	VL46	104 - 120	DMM	3 4	5 weeks 30 weeks

30 week placement: Generally taken in Year 3 and can be multiple short placements totalling at least 30 weeks.

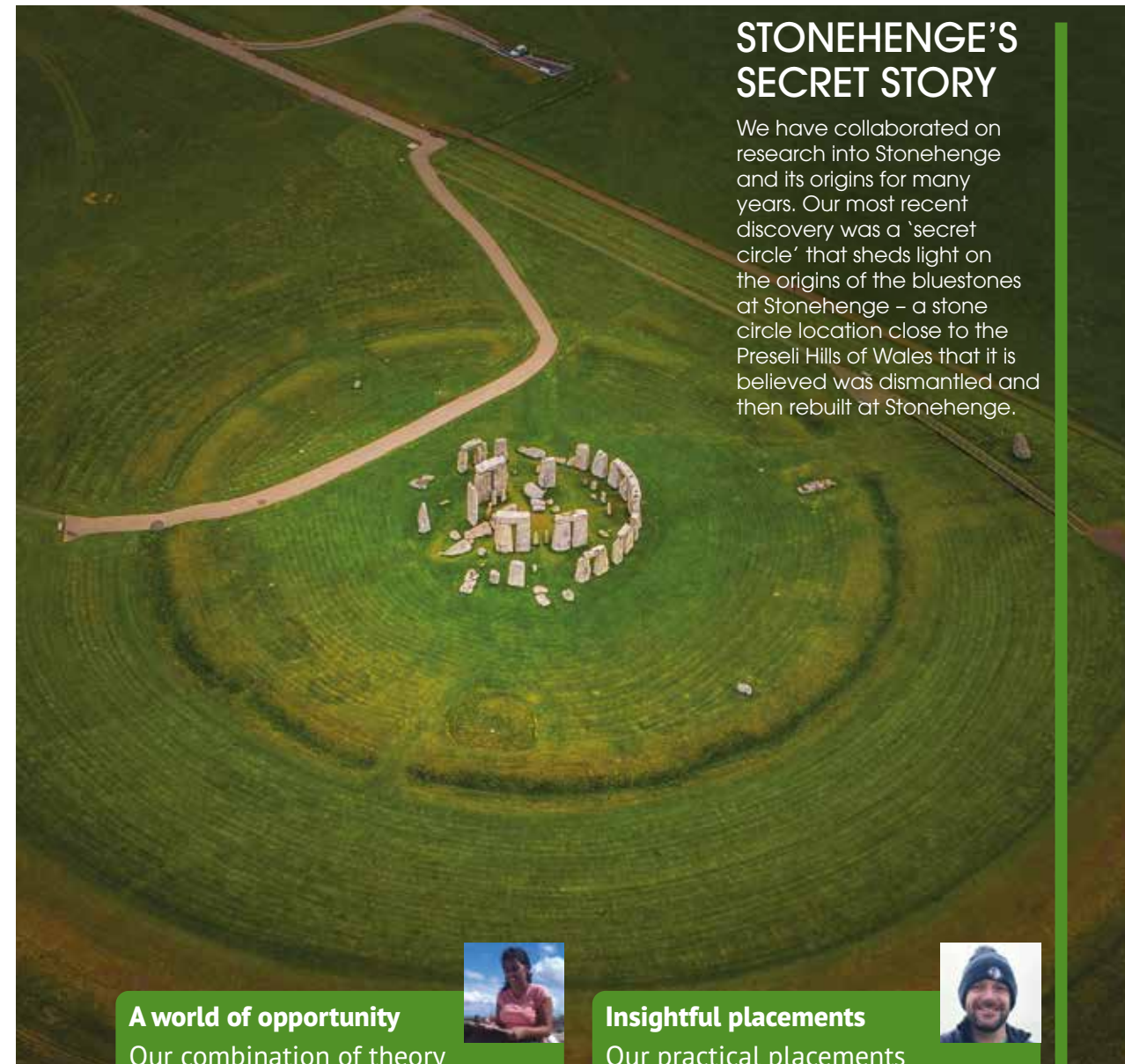
## Is BU right for you?

- Our practical facilities, including our dedicated biological anthropology lab, are among the best-equipped in the country – so you'll get plenty of hands-on experience on our courses.
- You could be studying in a brilliant location close to some prestigious historical sites, including the World Heritage Jurassic Coast and Corfe Castle.
- We're one of the first UK universities to gain accreditation from the Chartered Institute for Archaeologists (CIfA) and University Archaeology UK (UAUK), meaning our degrees are recognised for their excellence by the profession.
- You can choose from a wide selection of optional units, ranging from skylines to scientific diving, so you can tailor your course to your interests and career aspirations.
- You can get involved in the Durotriges Big Dig, which will give you a chance to undertake fieldwork. Previous students have uncovered significant finds that have changed the way we view the past.

**“The staff on the course are less like teachers and more like mentors; you know them all by their first name and work alongside them on field trips. There are lots of opportunities to be involved in and learn more – at the Tuesday evening seminars you hear eminent people like Professor Tim Darvill MBE asking questions, so you learn all the time.”**

Sam Randall, BA (Hons) Archaeology & Anthropology

#BelongAtBU



## STONEHENGE'S SECRET STORY

We have collaborated on research into Stonehenge and its origins for many years. Our most recent discovery was a 'secret circle' that sheds light on the origins of the bluestones at Stonehenge – a stone circle location close to the Preseli Hills of Wales that it is believed was dismantled and then rebuilt at Stonehenge.



### A world of opportunity

Our combination of theory and practice means you'll have an immediate impact in the field. That was clearly the case for Natasha Billson, a BA (Hons) Archaeology graduate who went on to work in Barbados, Cyprus, Russia and Germany within a year of graduating, and is now a presenter for the Discovery Channel!



### Insightful placements

Our practical placements can help shape your career choices. Lawrence Shaw, a BSc (Hons) Archaeology student, trained as a surveyor on our Stonehenge Riverside project. He describes realising he wanted a career using the skills he developed there as 'a real Eureka moment'.



Learn more: [www.bournemouth.ac.uk/ug-aafs](http://www.bournemouth.ac.uk/ug-aafs)

# BUSINESS & MANAGEMENT

With accreditations from bodies including AACSB and the Chartered Management Institute, these courses mean business.

## What we offer

Course	UCAS Code	UCAS Tariff	BTEC Ext. Diploma	Duration (years)	Placement
BA (Hons) Business & Management	NN12	104 - 120	DMM	3 4	None 30 weeks
(Entrepreneurship)*					
(Global Operations)*					
(HRM)*					
(Marketing)*					
(Project Management)*					
BA (Hons) International Business & Management*					
BA (Hons) Business & Management (Economics)*	N1L1	104 - 120	DMM	3 4	None 30 weeks
BA (Hons) Business & Management (Finance)*	N1N3	104 - 120	DMM	3 4	None 30 weeks

30 week placement: Generally taken in Year 3 and can be multiple short placements totalling at least 30 weeks.

\*These courses have a Foundation Year option for students who do not meet the standard entry requirements. See page 50 for more details.

## Is BU right for you?

- We're accredited by the Association to Advance Collegiate Schools of Business (AACSB) – an accreditation held by fewer than 6% of the world's business schools and one that requires us to meet extremely high levels of quality in all areas of our activity.
- Explore Business & Management as a subject in your first year and tailor your studies to your interests and career goals by choosing a specialist pathway at the end of your second year (with the exception of Economics and Finance pathways).
- Expand your career horizons at a university with over 35 years' experience teaching in this area, on courses with an excellent reputation.
- You'll have the chance to spend a semester abroad – a great way to increase your international understanding and make yourself even more employable.
- Our optional 30-week work placements will give you invaluable real-world experience and networking opportunities.

## PROFITS AND THE PLANET IN PARTNERSHIP

Our cutting-edge research helps organisations incorporate sustainability in ways that also help to increase profits and drive growth. It's part of our commitment to making environmentally ethical behaviour a core part of business.



### Supersize your career

BU graduate Harvey Scott's career has been driven by his passion for sustainability in the coffee industry. He now works for Sheba Coffee, a startup focused on rebuilding the Yemen coffee industry, that supports farmers who would otherwise be unable to access the global market.

### Solving real-world problems on a BU degree

As part of her course, final year BA (Hons) Business & Management student Abbie Wilson and her coursemates were invited to help solve sustainability problems faced by the Ministry of Defence, including national security, natural disasters and environmental challenges.



Learn more: [www.bournemouth.ac.uk/ug-bmm](http://www.bournemouth.ac.uk/ug-bmm)

# COMPUTER ANIMATION, GAMES & VISUAL EFFECTS

If you're an artist or a programmer (or both) who wants to create new worlds, characters and experiences, our degrees will help you bring your ideas to life using industry standard software and technology.

## What we offer

Course	UCAS Code	UCAS Tariff	BTEC Ext. Diploma	Duration (years)	Placement
BA (Hons) Computer Animation & Visual Effects*	W616	112 - 128	DMM	3 4	None 30 weeks
BSc (Hons) Games Design*	G601	104 - 120	DMM	3 4	4 weeks 30 weeks
BSc (Hons) Games Programming*	G620	120 - 128	DDM	3 4	4 weeks 30 weeks

30 week placement: Generally taken in Year 3 and can be multiple short placements totalling at least 30 weeks.

\*These courses have a Foundation Year option for students who do not meet the standard entry requirements. See page 50 for more details.

## Is BU right for you?

- We're home to the renowned National Centre for Computer Animation (NCCA), ranked as the UK's top animation school, second in Europe and third internationally (Animation Career Review, 2023).
- You'll use many of the same facilities you'll encounter in the industry, including a green screen studio, motion capture facilities, computer labs equipped with industry-standard software, collaborative working spaces and much more.
- BU graduates work for some of the biggest names in the business, including Microsoft Rare, Electronic Arts, Framestore, Criterion Games, ILM, Rockstar North, Unity, BlueZoo, Jagex, Frontier Developments, Outpost VFX, Rebellion, TT Games, King and DNEG.
- Our former students have worked on a range of feature films including *Blade Runner 2049*, *The Avengers* and *Dunkirk*, with some even going on to win Oscars and BAFTAs for their efforts.
- Our Games courses are accredited by TIGA and our graduates are regularly awarded prestigious TIGA Graduate of The Year awards for their outstanding programming and artistry skills.
- Our annual BFX Festival gives you the chance to join talks and masterclasses delivered by some of the best creative minds in the industry and to network with potential employers.

**"I do not feel I am alone, because I have been supported by my fellows through learning, experiencing and adventuring."**

Wendy Wang, NCCA student

#BelongAtBU

## WHERE CREATIVITY MEETS INNOVATION

Our annual BFX Festival brings together students and industry experts in a week-long celebration of visual effects, computer animation and games. Talks, panels and masterclasses mean you'll be learning from some of the biggest and most respected names in the industry as well as developing your professional network.



### Everyone is welcome

"As a woman from a more traditional background, I faced challenges for pursuing a degree considered to be male-oriented. The games industry is changing and becoming more welcoming to everyone, so if you have the drive for it, don't give up and go for it!"

**Pratiksha Prakash,  
BSc (Hons) Games Design**

### A blockbuster of a resumé

Since Nick Mulholland graduated from the NCCA at BU, he has gone on to work on titles including *Star Wars: The Force Awakens* and *The Last Jedi*, *Gravity*, *Warhorse*, *The Matrix* sequels, *Avengers*, *Avatar*, *Band of Brothers* and many more, forging a successful career in an industry full of BU graduates.



Learn more: [www.bournemouth.ac.uk/ug-cave](http://www.bournemouth.ac.uk/ug-cave)



# COMPUTING & INFORMATICS

Our courses have been designed in collaboration with industry so that you'll graduate with the exact skills employers are looking for.

## What we offer

Course	UCAS Code	UCAS Tariff	BTEC Ext. Diploma	Duration (years)	Placement
BSc (Hons) Business Computing with Analytics*	I230	104 - 120	DMM	3 4	None 30 weeks
BSc (Hons) Computer Science*	I100	104 - 120	DMM	3 4	None 30 weeks
BSc (Hons) Computing*	G610	104 - 120	DMM	3 4	None 30 weeks
BSc (Hons) Cyber Security Management*	2DA6	104 - 120	DMM	3 4	None 30 weeks
BSc (Hons) Cyber Security with Digital Forensics*	I140	104 - 120	DMM	3 4	None 30 weeks
BSc (Hons) Data Science & Artificial Intelligence*	I400	104 - 120	DMM	3 4	None 30 weeks
BSc (Hons) Networks & Cyber Security*	I125	104 - 120	DMM	3 4	None 30 weeks
BSc (Hons) Software Engineering*	G602	104 - 120	DMM	3 4	None 30 weeks

30 week placement: Generally taken in Year 3 and can be multiple short placements totalling at least 30 weeks.

\*These courses have a Foundation Year option for students who do not meet the standard entry requirements. See page 50 for more details.

## Is BU right for you?

- Our courses are split into three different pathways – Computing, Cyber Security and Data Analytics – and you can switch between courses within these pathways at the end of your first year.
- Gain industry experience on an optional 30-week placement – our placement students have worked for organisations such as Microsoft, Kingfisher, IBM, Hewlett-Packard, Goldman Sachs, and General Electric.
- Our courses change quickly to match the pace of the industry. What you study reflects what's happening in the industry, so you're well-prepared for the world of work when you graduate.

**“What I like the most about Bournemouth University is the diversity that it has and the opportunities that it gives us to work with local companies.”**

Iris Compan Del Monte, BSc (Hons) Cyber Security Management

#BelongAtBU

## RESEARCH THAT DRIVES TECHNOLOGY

Our research sees us solving real-world problems in crucial areas, including cyber security, data science, AI, human-computer interaction, processes and behaviour understanding, and future and complex networks.



### Real-world solutions

Our courses are brought to life through live briefs. Graduate James Leaver found himself working to build an Incident Response Management System for JP Morgan on his BSc (Hons) Data Science & Artificial Intelligence degree, and went on to join their 50-week Software Engineering Internship after graduating.



### Placements that focus the mind

Chloe Greenstreet, BA (Hons) Software Engineering, found herself attracted to her course because it mixed technical and creative skills. In the future she aspires to work in green IT, saying “There are so many areas where you could incorporate technology to improve the planet.”



Learn more: [www.bournemouth.ac.uk/computing](http://www.bournemouth.ac.uk/computing)

# CRIMINOLOGY & SOCIOLOGY

Explore ways that these traditional degrees can be applied to overcoming the challenges that the world is facing today.

## What we offer

Course	UCAS Code	UCAS Tariff	BTEC Ext. Diploma	Duration (years)	Placement
BA (Hons) Criminology	L611	104 - 120	DMM	3 4	None 30 weeks
BA (Hons) Criminology with Law*	L375	104 - 120	DMM	3 4	None 30 weeks
BA (Hons) Criminology with Psychology	LC38	104 - 120	DMM	3 4	None 30 weeks
BA (Hons) Sociology	18J3	104 - 120	DMM	3 4	None 30 weeks
BA (Hons) Sociology & Criminology	H2L9	104 - 120	DMM	3 4	None 30 weeks
BA (Hons) Sociology & Social Anthropology	LL36	104 - 120	DMM	3 4	None 30 weeks

30 week placement: Generally taken in Year 3 and can be multiple short placements totalling at least 30 weeks.

\*These courses have a Foundation Year option for students who do not meet the standard entry requirements. See page 50 for more details.

## Is BU right for you?

- Our courses are delivered by the Faculty of Health & Social Sciences, where you will learn from and engage with research-active social scientists to develop an understanding of contemporary and global issues..
- These courses are designed to challenge you to explore concepts in fields that range from terrorism to families; from healthy environments to human trafficking; and from gangs to government.
- Gain professional experience and follow your passions on an optional work placement.
- Apply your knowledge and skills to real-life situations.
- Open up career opportunities across a diverse range of sectors – from media to education, public relations, corporate business, local government, police, youth justice, and research.

**“Coming to BU is the best decision I’ve made potentially in my whole life! I have never felt a part of a community as strongly – I feel a valued member of the Bournemouth University community.”**

Ashleigh Stevens, BA (Hons) Sociology

#BelongAtBU



## ENSURING A LEVEL PLAYING FIELD

Everyone’s voice deserves to be heard. Our work addresses social, political, cultural and domestic inequality, applying social theories and insights to help identify, understand and reduce inequality wherever it is found.

### A rising Starr

Olivia Starr thought she had her career all mapped out for when she finished her BA (Hons) Sociology & Criminology degree – until she spent a placement at Dorset Police analysing a new pilot study to reduce re-offending. Her experience inspired a change of career plan to use the skills she developed there.

### International opportunities

Our students have benefitted from international work experiences such as researching gender issues and the situation of missing people in post-conflict Kosovo. New opportunities include volunteering with the African Insight Academy in South Africa to explore human-wildlife conflicts and interactions.



Learn more: [www.bournemouth.ac.uk/ug-crimsoc](http://www.bournemouth.ac.uk/ug-crimsoc)

# DESIGN & ENGINEERING

If you can think it, we can help you make it. Our prototyping facilities can help bring your ideas to life, giving you the experience you need to get your career off to a great start.

## What we offer

Course	UCAS Code	UCAS Tariff	BTEC Ext. Diploma	Duration (years)	Placement
BSc (Hons) Design Engineering*	H100	104 - 120	DMM	3 4	None 30 weeks
BEng (Hons)/MEng (Hons) Engineering (part-time)*	Apply direct to BU	See website for details	See website for details	2-4 years part-time	None
BEng (Hons) Mechanical Engineering*(R)	H305	120 - 128	DDM	3 4	None 30 weeks
MEng (Hons) Mechanical Engineering*(R)	H105	120 - 128	DDM	4 5	None 30 weeks
BA (Hons) Product Design	W240	104 - 120	DMM	3 4	None 30 weeks
BSc (Hons) Product Design	H101	104 - 120	DMM	3 4	None 30 weeks

30 week placement: Generally taken in Year 3 and can be multiple short placements totalling at least 30 weeks.

\*These courses have a Foundation Year option for students who do not meet the standard entry requirements. See page 50 for more details.

R: Required subjects for Mechanical Engineering: Mathematics and a Science or Technology subject.

## Is BU right for you?

- Relevant courses are accredited by the Institution of Engineering Designers (IED), the Institution of Mechanical Engineers (IMechE) and the Engineering Council, so you'll graduate with the skills employers need.
- Our courses have consistently high employment rates, with graduates going on to find roles in the industry.
- You have the chance to take a work placement at some great employers like Jaguar Land Rover, Kondor, GE, Anglepoise, Princess Yachts and Disney.
- Exhibit your work at the Festival of Design & Engineering as a final year student – showcasing your work and introducing yourself to the industry.
- Many of our students will have the chance to display their projects at national level at the New Designers showcase. In 2022 one of our students won the highest award of Best New Product Designer at the event in London.
- We have been teaching design and engineering courses for more than 30 years, so have plenty of experience and understanding.

## EDUCATING THE GAME CHANGERS

Our approach to design is practical and applicable. That means that our students graduate with commercially viable ideas and are ready to enter the industry and make changes – whether it's by joining a multinational company or launching a new product themselves.



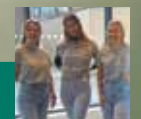
### Where ideas meet opportunities

Our annual Festival of Design & Engineering enables our undergraduate students to exhibit their final year projects to businesses from across the UK. It's the perfect opportunity to network and make valuable contacts, with many students being offered jobs as a result of their displays.

### Commitment to equality

"Our Athena Swan Bronze Award is so important to me because it shows the commitment of the department to the students and staff, and it makes me feel proud to be a part of this community and to represent women in engineering."

Laura Hardy, BEng (Hons) Mechanical Engineering



Learn more: [www.bournemouth.ac.uk/ug-de](http://www.bournemouth.ac.uk/ug-de)

# FORENSIC SCIENCES

Our courses cover all aspects of forensics, from crime scene investigation, exploring toxicology and molecular biology to analysing the biological contamination of food and wildlife crimes.

## What we offer

Course	UCAS Code	UCAS Tariff	BTEC Ext. Diploma	Duration (years)	Placement
BSc (Hons) Forensic Biology*	F3B7	104 - 120	DMM	3 4	2 weeks 30 weeks
BSc (Hons) Forensic Investigation*	F401	104 - 120	DMM	3 4	2 weeks 30 weeks
BSc (Hons) Forensic Science*	F413	104 - 120	DMM	3 4	2 weeks 30 weeks

30 week placement: Generally taken in Year 3 and can be multiple short placements totalling at least 30 weeks.

\*These courses have a Foundation Year option for students who do not meet the standard entry requirements. See page 50 for more details.

## Is BU right for you?

- Forensics is a wide-ranging and compelling subject, drawing from scientific methods and practical training within criminal investigation
- You will be taught by professional practitioners and guest speakers who are experts in their respective fields, including DNA profiling, crime scene investigation and forensic toxicology
- Your work will be carried out in a variety of stimulating environments, including science labs, IT labs, field trips, and dedicated crime scene teaching labs used for crime scene reconstruction
- A work placement opportunity gives you the chance to gain valuable work experience in your chosen field
- You will learn in contemporary lecture halls and state-of-the-art labs where you'll use cutting-edge equipment that mirrors what you will encounter as you start your career.

**“Bournemouth University has given me the chance to become a PAL leader to help first year students. This has encouraged me to grow and build my confidence. The BU community is extremely helpful and this ensures every student will achieve the best they can from their time here.”**

Lauren Cumberbatch, BSc (Hons) Forensic Investigation

#BelongAtBU

## FORENSIC DETAIL

Our forensics researchers work closely with agencies including Dorset Police, Police Scotland, the Department for Transport and The Environment Agency among others, working to support them in developing and implementing their policies so that the framework they work in is a great example of best practice.



### True crime

Mature student Stephen Sulpy joined our BSc (Hons) Forensic Investigation degree after ten years in the US military, including four years as a criminal investigator, and describes every unit as highly relevant. He hopes to return to the US as a federal criminal investigator, using what he has learned to make an impact.



### Gain in confidence

“BU has helped me grow so much as a person. Studying forensic science has been fascinating. I used to be a very anxious person before university, but being a part of BU has made me feel so much more confident.”

**Charlotte Woollen,**  
BSc (Hons) Forensic  
Science



Learn more: [www.bournemouth.ac.uk/ug-for](http://www.bournemouth.ac.uk/ug-for)

# HISTORY & POLITICS

From global to grassroots, these degrees give you the skills to address and challenge the current global affairs in marginalisation, populism, environmentalism, conflict and diplomacy.

## What we offer

Course	UCAS Code	UCAS Tariff	BTEC Ext. Diploma	Duration (years)	Placement
BA (Hons) History*	H4F5	104 - 120	DMM	3	4 weeks
				4	30 weeks
BA (Hons) Politics*	P486	104 - 120	DMM	3	4 weeks
				4	30 weeks

30 week placement: Generally taken in Year 3 and can be multiple short placements totalling at least 30 weeks.

\*These courses have a Foundation Year option for students who do not meet the standard entry requirements. See page 50 for more details.

## Is BU right for you?

- Join a top-ranked History course (BU is ranked 4th in the UK for history by the *Guardian University Guide 2024*), and co-create research with our world-leading scholars in the field of politics (Research Excellent Framework results).
- These courses are delivered by the Faculty of Media & Communication, where a media-driven environment allows you to immerse yourself in media history and be part of politics in the making as an expert pundit and commentator on election nights and student question time specials.
- Gain professional experience and follow your passions on an optional work placement.
- Open up career opportunities across a diverse range of sectors – from media to education, public relations, corporate business, local government, police, youth justice, and research.
- Develop an understanding of the role of media and communication in shaping the construction and interpretation of historical and political events and experiences.
- Explore contemporary global challenges – such as populist politics, digital disinformation, and the climate crisis - and learn the skills to critically evaluate different interpretations of events and issues.
- Experience innovative assignments such as mock peace conference negotiations and board game design, manifesto and podcast creation.
- Engage with public history through working with a range of outside agencies including museums, archives and heritage organisations.
- Benefit from studying as part of a small cohort with a strong community feel, learning from an excellent academic team with a range of experiences.

**“You feel supported and encouraged to do well. If I had to make the decision again, I would choose to study at BU every time.”**

Tom Rayner, BA (Hons) History

#BelongAtBU



## VOICES FROM THE MARGINS

Our history and politics research captures the untold and unseen stories from individuals and communities. We address the contemporary issues of our age, such as climate breakdown, populism, and campaigns for social justice, and how they came to be.

### Leading the way in climate change and peace studies

As a student at BU, you'll have the opportunity to take the lead in national-level simulations on climate and peace studies, such as at the British International Studies Association, where BU students were recognised with the Distinguished Delegation Award in 2023.

### Straight into employment

After graduating from BA (Hons) Politics in 2023, Callum Edwards immediately secured a role working for an MP. He found that the units covered through his Politics degree really helped with understanding current affairs and ultimately helped him to end up where he is now.



Learn more: [www.bournemouth.ac.uk/ug-hpss](http://www.bournemouth.ac.uk/ug-hpss)

# JOURNALISM, ENGLISH & COMMUNICATION

Our forward-thinking degrees will help you become an innovative storyteller with a multimedia skillset that's both sought after by employers and can set you on your way to a successful freelance career.

## What we offer

Course	UCAS Code	UCAS Tariff	BTEC Ext. Diploma	Duration (years)	Placement
BA (Hons) Communication & Media*	P900	104 - 120	DMM	3 4	4 weeks 30 weeks
BA (Hons) English*	Q300	104 - 120	DMM	3 4	4 weeks 30 weeks
BA (Hons) Multimedia Journalism*	P500	104 - 120	DMM	3 4	4 weeks 30 weeks
BA (Hons) Multimedia Sports Journalism*	P505	104 - 120	DMM	3 4	4 weeks 30 weeks

30 week placement: Generally taken in Year 3 and can be multiple short placements totalling at least 30 weeks.

\*These courses have a Foundation Year option for students who do not meet the standard entry requirements. See page 50 for more details.

## Is BU right for you?

- Join our hall of fame – we have an excellent graduate employment record with alumni working for national and international organisations including ITV, BMW, Time Out, BBC, Pixar and Sky. You'll be skilled to work in sectors such as marketing, digital media, education and publishing – you could even find yourself working in the business or charity sectors.
- We work with high-profile companies to offer placements to our students, helping you to develop industry connections and to apply the skills you've learnt on your degree to the real world.
- Our Communication & Media degree will help you develop knowledge in digital and multimedia communication, PR, advertising, journalism and storytelling, allowing you to contribute towards conversation and practical tasks in any company.
- Gain experience in publishing, podcasts, social media and blogs through our student publishing house, Fresher Publishing and enter your creative works into our range of international writing prizes.
- Our National Council for the Training of Journalists (NCTJ)-accredited Journalism degrees provide opportunities to gain additional industry recognised qualifications and are taught by experts who have experience working on international, national and regional press. Our BA (Hons) Multimedia Journalism degree is also accredited by the Broadcast Journalism Training Council (BJTC) and the Professional Publishers Association (PPA).



## EMPOWERING CHILD REFUGEES

Over 150,000 unaccompanied child asylum seekers have been registered in the EU over the past three years. Our research is focusing on helping them develop their media literacy so they can integrate themselves into their new communities, becoming empowered citizens and ensuring their voices – and their stories – can be heard.

### Breaking news

Our journalism degrees feature dedicated news days, where you'll face all the pressures of working life. You'll work a day's shift, dealing with breaking news, writing stories or preparing broadcasts in real time to hit deadlines exactly as you would if you were working for a real newspaper or news broadcaster.

### A BU education gives you belief as well as knowledge

"The whole experience of studying at BU sparked my self-belief – an essential part of setting up my own communications and mentoring business and being able to help others increase their confidence – an all-round win."

Trisha Lewis,  
BU graduate



Learn more: [www.bournemouth.ac.uk/ug-jec](http://www.bournemouth.ac.uk/ug-jec)

# LAW

In a rapidly changing legal profession, our courses give you insights into legal practice and build your commercial awareness, digital and transferable skills to help you become a career-ready graduate.

## What we offer

Course	UCAS Code	UCAS Tariff	BTEC Ext. Diploma	Duration (years)	Placement
LLB (Hons) Law*	M100	104 - 120	DMM	3 4	None 30 weeks
LLB (Hons) Law, Media & Creative Industries*	M300	104 - 120	DMM	3 4	None 30 weeks
LLB (Hons) Law with Politics*	M200	104 - 120	DMM	3 4	None 30 weeks

30 week placement: Generally taken in Year 3 and can be multiple short placements totalling at least 30 weeks.

\*These courses have a Foundation Year option for students who do not meet the standard entry requirements. See page 50 for more details.

## Is BU right for you?

- The *Complete University Guide 2024* ranks our LLB (Hons) Law course first in the south west for graduate prospects and third nationally. BU is also ranked in the top 40 universities in the UK for law in the *Complete University Guide 2024* and the *Guardian University Guide 2024*.
- We work closely with the Solicitors Regulation Authority (SRA), the Bar Standards Board (BSB) and members of the legal profession to develop courses that reflect the industry you'll work in upon graduating.
- If you intend on becoming a solicitor we have a dedicated pathway to assist you in preparing for the stage one Solicitors Qualifying Examination (SQE) assessments. Alternatively, if you're considering becoming a barrister our degrees enable you to take the next step in progressing to the Bar Practice Course (BPC).
- Our practical Moot Court tests oral and written skills in a courtroom environment and will give you valuable practical experience.
- BU has excellent links with a range of legal firms; our students have completed placements with the likes of Mishcon de Reya, Fladgate, Steele Raymond, Lester Aldridge, Law Debenture, Citizens Advice Bureau, the Crown Prosecution Service, Toyota, Honda and local authorities, among many others.
- You will join our vibrant BU Law Community with regular skills and professional practice workshops and opportunities to engage with legal professionals during our Law Future Friday events or through our active Student Law Society.

**"The course was delivered in a personal way and due to the approachability of the teaching staff I felt well supported at every stage."**

Paul Lindsell, LLB (Hons) Law

#BelongAtBU



## SECURING JUSTICE AND CLOSURE

BU has led the world in developing a protocol for the protection and subsequent investigation of mass graves. Our research and expertise is helping to ensure that those who perpetrate such crimes will be brought to justice, and that survivors will know where their loved ones are and what happened to them.

### A moot point

As part of your Law degree at BU, you'll take part in our moot court assessments. These are mock court simulations, where you'll advocate a point of law on behalf of a client before a judge – who might be a faculty member, a practicing lawyer, or a real judge.

### Growing into law

"My experience at BU has been very beneficial as I have grown in so many ways. I've been able to overcome certain struggles that defeated me in the past, such as public speaking and time efficiency and asking for help when I needed it."

Nana Umoh,  
LLB (Hons) Law



Learn more: [www.bournemouth.ac.uk/ug-law](http://www.bournemouth.ac.uk/ug-law)

# LIFE & ENVIRONMENTAL SCIENCES

Outstanding facilities and an excellent reputation, all located in one of the UK's richest biodiversity hotspots and close to incredible natural environments.

## What we offer

Course	UCAS Code	UCAS Tariff	BTEC Ext. Diploma	Duration (years)	Placement
BSc (Hons) Biological Sciences*	C100	104 - 120	DMM	3 4	None 30 weeks
BSc (Hons) Ecology & Wildlife Conservation*	CD14	104 - 120	DMM	3 4	2+4 weeks 2+30
BSc (Hons) Environmental Science*	D449	104 - 120	DMM	3 4	2+4 weeks 2+30
BSc (Hons) Geography*	F800	104 - 120	DMM	3 4	2+4 weeks 2+30

30 week placement: Generally taken in Year 3 and can be multiple short placements totalling at least 30 weeks.

\*These courses have a Foundation Year option for students who do not meet the standard entry requirements. See page 50 for more details.

## Is BU right for you?

- Study at a university with outstanding facilities and an excellent reputation, located in one of the UK's richest biodiversity hotspots.
- Our courses are delivered by a multifaceted team of academic experts, including biologists, ecologists, geographers and environmental scientists, offering a large variety of optional units to ensure you can tailor the course to your interests and career aspirations.
- Brilliant locations for research and fieldwork are right on our doorstep in places like the New Forest National Park and the Jurassic Coast – and there are also opportunities to work on projects overseas.
- Gain professional experience on a placement, including the option to extend your degree by a year and undertake a minimum 30-week placement.
- You'll spend your degree surrounded by academics who are producing research that's respected all over the world.

**“There are lots of avenues for environmental scientists and the multidisciplinary edge the course offers, has given me the means to go anywhere I want with it, which is really exciting.”**

Tanya Bellows, BSc (Hons) Environmental Science

#BelongAtBU



## FISHERMAN'S FRIEND: HOW BU SAVED A SPECIES

Our research discovered that the hump-backed mahseer had been pushed to extinction without anyone realising. After we proved the species was in trouble, measures have been put in place that have given the species – native to rivers in Southern India – a shot at survival.

### From Bournemouth to Bali

Zach Boakes, a BSc (Hons) Environmental Science graduate, spent his placement year in Bali where he co-founded a volunteering organisation to preserve the local coral reefs. He now lives and works in Bali full-time, deploying artificial coral reefs to help restore marine habitats!

### Always take the weather

BSc (Hons) Geography graduate Becky Fowell secured a role as an Assistant Meteorologist after leaving us – supplying weather data to insurance companies dealing with weather-related claims. The skills she learned at BU have helped her improve the ways her employer develops their data.

Learn more: [www.bournemouth.ac.uk/ug-les](http://www.bournemouth.ac.uk/ug-les)





# MARKETING

Our marketing portfolio consists of BSc (Hons) Marketing and a suite of four BA (Hons) Marketing Communications degrees recognising the diverse skillsets and specialisms required in the discipline.

## What we offer

Course	UCAS Code	UCAS Tariff	BTEC Ext. Diploma	Duration (years)	Placement
BSc (Hons) Marketing*	N504	104 - 120	DMM	4	30 weeks
BA (Hons) Marketing Communications*	N591	104 - 120	DMM	4	30 weeks
BA (Hons) Marketing Communications with Advertising*	N592	104 - 120	DMM	4	30 weeks
BA (Hons) Marketing Communications with Digital Media*	N593	104 - 120	DMM	4	30 weeks
BA (Hons) Marketing Communications with Public Relations*	N594	104 - 120	DMM	4	30 weeks

Placements: 30 weeks is a minimum and can be made up of multiple placements instead of one longer placement.

\*These courses have a Foundation Year option for students who do not meet the standard entry requirements. See page 50 for more details.

## Is BU right for you?

- Our BSc (Hons) Marketing course is led by the BU Business School, which is accredited by the Association to Advance Collegiate Schools of Business (AACSB) – an accreditation held by fewer than 6% of the world's business schools and one that requires us to meet extremely high levels of quality in all areas of our activity.
- We pioneered the teaching of marketing communications, delivering sector-leading degrees for over 25 years, and our courses give you the chance to specialise in an area that interests you.
- You'll learn from lecturers who are accomplished practitioners, as well as outstanding guest speakers from industry, so what you learn will be immediately relevant to your future career.
- You can apply for a placement from our extensive network of contacts such as the BBC, Working Title, Endemol, Meridian, Disney and IBM.
- Take advantage of our comprehensive additional accreditation opportunities and graduate with professional qualifications alongside your degree.

**"I really enjoyed my placement at L'Oréal; it was probably the best year of my life."**

Siobhan Glover, BSc (Hons) Marketing

#BelongAtBU



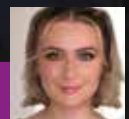
## WHEN GODZILLA ATTACKS!

Our cross-faculty collaborations can get a little unusual. One scenario sees Marketing Communications students take on the role of comms professionals in the aftermath of an attack on Bournemouth by Godzilla. The team was responsible for ensuring safety messages and updates were transmitted to keep the citizens of Bournemouth safe as the event unfolded. (No Godzillas were harmed in the making of this simulation.)



### Ensuring diversity in marketing

We're passionate about equality in marketing, which is why we're so proud of Dev Mistry, a 2015 graduate. Dev is committed to increasing racial and LGBTQ+ equality in the industry he loves, and has taken up many roles to help make those changes happen.



### Helping Google go carbon-free

Sustainability is an important part of our curriculum, and we encourage students to take the latest thinking with them into their careers. Marketing graduate Olivia Ford joined Google after leaving BU, where she is working to help the company become carbon free by 2030.



Learn more: [www.bournemouth.ac.uk/ug-marketing](http://www.bournemouth.ac.uk/ug-marketing)

# MEDIA, PHOTOGRAPHY & MUSIC PRODUCTION

A collaborative and creative environment coupled with industry-standard facilities and work placements will get your career off to a great start.

## What we offer

Course	UCAS Code	UCAS Tariff	BTEC Ext. Diploma	Duration (years)	Placement
BA (Hons) Film*	T6H3	104 - 120	DMM	3 4	20 days 30 weeks
BA (Hons) Film Production & Cinematography**	PW36	104 - 120	DMM	3 4	4 weeks 30 weeks
BA (Hons) Media Production*	PH10	104 - 120	DMM	3 4	4 weeks 30 weeks
BA (Hons) Music & Sound Production	W391	104 - 120	DMM	3 4	8 weeks 30 weeks
BA (Hons) Photography*	W690	104 - 120	DMM	3 4	4 weeks 30 weeks
BA (Hons) Film & TV Production*	W621	104 - 120	DMM	3 4	4 weeks 30 weeks

30 week placement: Generally taken in Year 3 and can be multiple short placements totalling at least 30 weeks.

\*These courses have a Foundation Year option for students who do not meet the standard entry requirements. See page 50 for more details.

\*\* This course is delivered at the Wiltshire College and University Centre in Salisbury

## Is BU right for you?

- Our courses are developed in close collaboration with industry and education partners to ensure you'll develop the skills they are looking for.
- You'll be learning using the same facilities you'll encounter in the industry itself, based in our Poole Gateway Building. These include a sound stage, recording studios, TV studios, a green screen studio, SSL recording studios, live rooms, surround-sound studios, stereo rooms and dedicated music labs.
- Gain industry experience through our extensive network of organisations that offer placements to our students, including the likes of the BBC, Working Title, Endemol, Discovery and Disney.
- Working as a team with students from different disciplines, you'll bring each other's ideas to life. As well as preparing you for a career working alongside other disciplines, this early exposure to collaboration can help to inform and refine the way you work within your own discipline.
- Bolster your CV by getting involved with extracurricular opportunities through student-led platforms like Nerve Media.

## SUCCESS STORIES

The success of our graduates speaks for itself. Many of our students have gone on to forge successful careers. One such graduate is Will Stone, a BA (Hons) Film Production & Cinematography graduate whose short film *The Fence*, created for a university project, has since been made into a feature film starring Sally Phillips.



### Hands-on from the off

Right from the start of your BA (Hons) Film & TV Production degree, you'll be involved in creating content - both in our TV studio and out on location. Like student Kage, you'll be producing, directing, operating camera and sound equipment, editing, mixing, presenting and much much more!

### Gaining experience

Working with real-life organisations is a key part of all our degrees. Jess, a BA (Hons) Media Production student, studied a unit that pairs student groups with local businesses and charities as real-life clients, and found the practical experience she gained gave her invaluable insight!



Learn more: [www.bournemouth.ac.uk/ug-ftmm](http://www.bournemouth.ac.uk/ug-ftmm)

# MEDICAL SCIENCES

These courses are taught by academics at the cutting edge of medical and biomedical sciences, many of whom have worked alongside local NHS hospitals with Covid-19 diagnosis and research.

## What we offer

Course	UCAS Code	UCAS Tariff	BTEC Ext. Diploma	Duration (years)	Placement
BSc (Hons) Biomedical Science*	B940	104 - 120	DMM	3 4	2 weeks 30 weeks
BSc (Hons) Medical Science*	B100	120 - 128	DDM	3 4	2 weeks 30 weeks

30 week placement: Generally taken in Year 3 and can be multiple short placements totalling at least 30 weeks.

\*These courses have a Foundation Year option for students who do not meet the standard entry requirements. See page 50 for more details.

## Is BU right for you?

- Develop the social, practical and communication skills to work in wet-laboratories, multidisciplinary teams, biomedical engineering, biopsychosocial research, or bioinformatics.
- Gain a solid underpinning in subjects such as anatomy, physiology, genetics, biochemistry and cell biology.
- Study a degree designed with subjects and pathways that allow you to tailor your education.
- Our teaching is led by our own research and there are even opportunities for you to get involved in exciting research projects while you study.
- We work in close partnership with The University Hospitals Dorset NHS Foundation Trust to further research collaboration, placement support and recruitment and training opportunities – to the benefit of both organisations.
- A degree in medical science or biomedical science can also provide opportunities to pursue postgraduate study on our Physician Associate course.

**“The community at BU is so welcoming, and I have made so many friends both on my course and in the societies I am a part of. Having lecturers from a wide range of scientific backgrounds has provided amazing industry connections and has helped me discover my passion for a career in embryology.”**

Brooke Roberts, BSc (Hons) Biomedical Science

#BelongAtBU



## SKILLS THAT CAN SAVE LIVES

Our students and graduates have the skills needed to undertake important research that can save lives. Zayd Lakhi (pictured) spent his placement working on weight loss treatments for diabetes and obesity, helping ensure better outcomes for people affected by those conditions.

### Close collaboration

We collaborate closely with University Hospitals Dorset, working together for the people of Dorset. Many of our placement students work as medical lab assistants in haematology and transfusion labs in local NHS hospitals – contributing to research and benefitting patients and the local community.

### Cutting-edge facilities

We have recently invested in state-of-the-art lab facilities, including microbiology and tissue labs as well as our analytical lab, which houses a MiSeq next-generation instrument for genomic sequencing (used to sequence strains during the Covid-19 pandemic).



Learn more: [www.bournemouth.ac.uk/ug-ms](http://www.bournemouth.ac.uk/ug-ms)

# NURSING & MIDWIFERY

With integrated placements in NHS Trusts, and community settings across the south, you'll gain experience in a variety of environments while studying with us.

## What we offer

Course	UCAS Code	UCAS Tariff	BTEC Ext. Diploma	Duration (years)	Placement
BSc (Hons) Adult Nursing**	B700	104-120	DMM	3	Integrated
BSc (Hons) Children's & Young People's Nursing***	B702	112-128	DMM	3	Integrated
BSc (Hons) Mental Health Nursing**	B701	112-128	DDM	3	Integrated
BSc (Hons) Midwifery*(R)	B720	128-144	DDM	3	Integrated

All these courses feature integrated placements, which are undertaken as part of your studies.

\*These courses have a Foundation Year option for students who do not meet the standard entry requirements. See page 50 for more details.

\*\* These courses have a Foundation Year, Apprenticeship and an Advanced Standing option available. See website for more details.

\*\*\* These courses have a Foundation Year and an Advanced Standing option available. See website for more details.

R: Required subjects: see page 92 for more details.

## Is BU right for you?

- Study in our £48 million Bournemouth Gateway Building, the home of the Faculty of Health & Social Sciences.
- Learn in our clinical skills areas, including our acute and patient hospital wards or maternity suite, providing state-of-the-art facilities for you to practise the skills required to become a confident practitioner.
- These courses have professional accreditation from the Nursing & Midwifery Council (NMC).
- Study in an environment that generates life-changing research across healthcare.
- These challenging but life-changing courses offer the opportunity for you to develop into a compassionate, knowledgeable, competent, safe and critical thinking practitioner.
- Graduate with the skills to deliver and lead high-quality care in a wide variety of healthcare settings.

**“I overcame the challenges I encountered thanks to support from my peers, lecturers and supervisors who reminded me of the reasons why I am here. My confidence continues to flourish thanks to this support, and I cannot wait to see what is to come.”**

Harrison, BSc (Hons) Midwifery

#BelongAtBU

## KEEPING NURSES IN NURSING

A BU research project, carried out for the Burdett Trust for Nursing, resulted in lots of different practical outputs aimed at keeping nurses in the profession, at a time when nurse retention has never been more important.



### International opportunities

“As a single parent with two near teenage children, I wasn't sure whether going back to university at this time in my life was a brave or crazy decision. I am pleased to say it was a brave decision and proved to be one of the best I have ever made.”

**Kylie Baker,  
BSc (Hons) Adult Nursing**

### The value of your placement

Your placement experiences can shape your education and career choices. Student midwife Lisa Heritier is a great example, discovering while on her placement that she loved antenatal care and caesarian section, deciding to focus on a career in those areas as a result.



Learn more: [www.bournemouth.ac.uk/ug-nm](http://www.bournemouth.ac.uk/ug-nm)

# PSYCHOLOGY

Cutting-edge resources and expert lecturers, combined with the chance to undertake exciting work placements give you plenty of reasons to consider these courses.

## What we offer

Course	UCAS Code	UCAS Tariff	BTEC Ext. Diploma	Duration (years)	Placement
BSc (Hons) Psychology*	C800	112 - 128	DMM	3 4	4 weeks 30 weeks
BSc (Hons) Psychology with Counselling*	C8B9	112 - 128	DMM	3 4	4 weeks 30 weeks
BSc (Hons) Psychology with Forensic Investigation*	C803	112 - 128	DMM	3 4	4 weeks 30 weeks

Placements: 30 weeks is a minimum and can be made up of multiple placements instead of one longer placement.

\*These courses have a Foundation Year option for students who do not meet the standard entry requirements. See page 50 for more details.

## Is BU right for you?

- Our courses are accredited by the British Psychological Society (BPS) – meaning they're continually scrutinised to ensure we reflect the needs of both the profession and society.
- Develop your skills with the industry-standard facilities in our testing suite.
- Study a degree delivered by a department that integrates cutting-edge research into quality teaching, professional practice, and public engagement.
- Our research in this area has an impact locally, regionally, nationally and internationally.
- We have recently invested in state-of-the-art lab facilities, including the microbiology and tissue labs as well as our analytical lab, which houses a MiSeq next-generation instrument for genomic sequencing (used to sequence strains during the Covid-19 pandemic).
- Our teaching is inspired by our own research and there are even opportunities for you to get involved in exciting research projects while you study.
- We constantly review and align our courses to ensure we meet the evolving needs in society and industry and prepare you for a diverse and fulfilling career.

**“The whole experience at BU has been such a positive one for me that I returned to study my Master’s degree, and I’m now undertaking a PhD.”**

Jastine Antonlin, BSc (Hons) Psychology

#BelongAtBU



## PUTTING A NAME TO A FACE

Our research leads the way in increasing the understanding of prosopagnosia – a condition that makes it harder for people to identify facial differences. Initially, it was thought to be extremely rare but we have not only shown it to be far more common than first thought, but our work has taken giant strides towards better diagnosis and understanding of the condition – including helping it to become officially recognised.

### Placements that focus minds

All our courses feature a placement opportunity, which can really help you to make informed decisions about your career path – like it did for Cliona, whose placement with Cornwall NHS Foundation Trust helped her discover that she wanted to become a clinical psychologist.

### Building your career

A highlight of Brooke's time on BSc (Hons) Psychology was her placement year with Dorset's NHS Trust where she worked with psychology wellbeing practitioners and clinical psychologists. Her time on placement provided her with a great experience on which to build her future career plans in an area she's really passionate and excited about.



Learn more: [www.bournemouth.ac.uk/ug-psych](http://www.bournemouth.ac.uk/ug-psych)

# SPORT & NUTRITION

With access to high-quality facilities and world-leading academics, our sports and nutrition courses can help to fast-track your career in these competitive industries.

## What we offer

Course	UCAS Code	UCAS Tariff	BTEC Ext. Diploma	Duration (years)	Placement
BSc (Hons) Nutrition* (R)	B400	104 - 120	DMM	3 4	4 weeks 30 weeks
BSc (Hons) Sport Coaching*	C602	104 - 120	DMM	3 4	6 weeks 30 weeks
BSc (Hons) Sport Management*	N290	104 - 120	DMM	3 4	6 weeks 30 weeks
BSc (Hons) Sport & Exercise Science*	C605	112 - 128	DMM	3 4	6 weeks 30 weeks
BSc (Hons) Sports Therapy (R)	846W	120 -136	DMM	3 4	** 30 weeks**

Placements: 30 weeks is a minimum and can be made up of multiple placements instead of one longer placement.

\*These courses have a Foundation Year option for students who do not meet the standard entry requirements. See page 50 for more details.

\*\*Require the completion of 200 hours supervised placement in the final year.

R: Required subjects: see page 92 for more details.

## Is BU right for you?

- BU is recognised as a Premier Skills Development Partner, one of the few universities in the UK to have this recognition.
- Our sports courses are informed by our extensive links within the sector, ensuring you are learning the skills that employers will need in the future. BSc (Hons) Nutrition and BSc (Hons) Sports Therapy are accredited by the Association for Nutrition and the Society of Sports Therapists respectively. BSc (Hons) Sports & Exercise Science is endorsed by the British Association of Sport and Exercise Science.
- We have well-equipped Nutrition and Human Performance laboratories, as well as our own dedicated Sport Campus.
- Our courses are delivered by teams with a global outlook, by staff who publish internationally and collaborate with universities around the world.
- Students on these courses have previously had placement opportunities working with the likes of West Ham United FC, The Goodsport Trust, AFC Bournemouth, Fitness First, US Sport Institute, Saracens RFC, Surrey County Cricket, Nestle, Unilever, Quattro foods, and many more.

**“My four years at university have given me memories to last a lifetime, friends to call family and a degree to guide me into the world of employment.”**

Lauren Jones, BSc (Hons) Nutrition

#BelongAtBU



## MAKING SPORT A SAFE PLACE FOR WOMEN

BU's Dr Emma Kavanagh is one of the world's leading academics looking at the virtual abuse of elite athletes, and has presented her research in New York to the United Nations Commission on the Status of Women. Her research has been pivotal in framing the presence of violence in virtual spaces and the risks it poses, as well as guiding sporting organisations to keep athletes and their entourages safe from online abuse.



### Research that's ahead of the crowd

Many of our students have the chance to contribute to published research – like BSc (Hons) Sports Coaching student Joe Evans. He spent his placement at West Ham United, researching the impact of heading in first-team training sessions. His research was subsequently published in the *British Journal for Sports Medicine*.



### Serving suggestion

Have you ever wondered who tests and checks cooking instructions to make sure they are safe (and that the food tastes good)? BSc (Hons) Nutrition student Sam secured a ten-week paid placement on the Leatherhead Food Research scheme doing precisely that, protecting the health of the public.



Learn more: [www.bournemouth.ac.uk/ug-sn](http://www.bournemouth.ac.uk/ug-sn)

# TOURISM, HOSPITALITY & EVENTS

Where better to study these courses than one of the UK's leading tourist destinations, home to a thriving tourism and hospitality industry with huge events held throughout the year?

## What we offer

Course	UCAS Code	UCAS Tariff	BTEC Ext. Diploma	Duration (years)	Placement
BA (Hons) Events Management*	N820	104 - 120	DMM	4	30 weeks
BA (Hons) International Tourism & Hospitality Management*	N840	104 - 120	DMM	4	30 weeks
BA (Hons) Tourism Management*	N800	104 - 120	DMM	4	30 weeks
BA (Hons) International Hospitality & Business Management*	N810	104 - 120	DMM	4	30 weeks
BA (Hons) International Tourism & Business Management*	N830	104 - 120	DMM	4	30 weeks

30 week placement: Generally taken in Year 3 and can be multiple short placements totalling at least 30 weeks.

\*These courses have a Foundation Year option for students who do not meet the standard entry requirements. See page 50 for more details.

## Is BU right for you?

- We have 30 years' teaching experience in this subject area – we've been named as a Centre of Excellence for Tourism by the Institute of Travel and Tourism, and are certified by the World Tourism Organisation.
- Tourism research at BU was rated as joint-first in the UK based on internationally recognised research in the most recent Research Excellence Framework (REF).
- Gain hands-on experience with an optional work placement.
- We are internationally renowned in this subject area, ranking 19th for Hospitality & Leisure Management in the QS World University Rankings in 2023, and 2nd in the UK for Hospitality & Tourism Management in Shanghai Ranking's Global Ranking of Academic Subjects 2023.
- Some of our courses and/or specific units have received accreditation from professional bodies including the Chartered Institute of Marketing, the Association of Project Management, the Institute of Data & Marketing and the Institute of Hospitality.

## RESEARCH WITH A TRULY GLOBAL REACH

Our research into the tourism and hospitality sector is respected around the world. Our work has helped governments to form their policies around increasing tourism, while we work with companies and restaurants – from multinationals to independents – to help the industry we love to thrive.



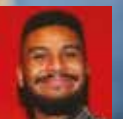
### Published research

Your dissertation is a piece of research first and foremost – and could be published in a journal. That's what happened to BA (Hons) Tourism Management graduate Esther Obigbesan, whose work 'Positive Experiences of Visually Impaired Tourists' was published in *Current Issues in Tourism*. Esther, who is visually impaired herself, now works for Coca-Cola.



### Sweet like chocolate

Having set his sights on joining a values-led organisation, BA (Hons) Events Management graduate Micah Douglas is proud to be working for a brand on a mission to tackle modern slavery. He is now a Marketing Assistant at Tony's Chocolonely – a Dutch confectionary brand setting out to make the chocolate industry 100% slave free.



Learn more: [www.bournemouth.ac.uk/ug-the](http://www.bournemouth.ac.uk/ug-the)



# Required subjects

A number of our courses have required subjects, some will also require you to have achieved a specific number of tariff points from these subjects. Visit [www.ucas.com/tariff](http://www.ucas.com/tariff) for more details.

Course	Specific entry requirements	Required subject
BEng/MEng (Hons) Mechanical Engineering	120 - 128 tariff points including a minimum of 2 A-levels or equivalent in required subjects	Mathematics and a Science or Technology subject
BSc (Hons) Midwifery	128 - 144 tariff points, including a minimum of two A-levels or equivalent, with 32 points in a required subject	Applied Human Biology, Applied Science, Biology, Chemistry, Health & Social Care, Human Biology, Physics, Psychology, Sociology.
BSc (Hons) Nutrition	104 - 120 tariff points, including a minimum of 2 A-levels or equivalent, including 32 points in a required subject	Applied Human Biology, Applied Science, Biology, Chemistry, Food Technology, Health & Social Care, Mathematics, Physics, Physical Education, Psychology, Sport, Sport & Exercise Science, Science, Science-related subject
BSc (Hons) Paramedic Science	112 - 128 tariff points, including a minimum of two A-levels or equivalent, with 40 points in a required subject	Applied Human Biology, Applied Science, Biology, Health & Social Care, Human Biology, Life Science, Physical Education, Sport & Exercise Science
BSc (Hons) Physiotherapy	128 - 144 tariff points, including a minimum of two A-levels or equivalent, with 40 points in a required subject	Biology, Human Biology, Physical Education, Applied Human Biology, Health & Social Care
BSc (Hons) Sports Therapy	120 - 136 tariff points including a minimum of 2 A-levels or equivalent including 40 points in a required subject	Biology, Human Biology, Applied Human Biology, Applied Science, Health Science, Health & Social Care, Physical Education, Sport, Sport & Exercise Science, Science





# Foundation and Top-up degrees

**There isn't a one-size-fits-all solution for education. Everyone is different, so we offer a range of different solutions. In particular, we run Foundation and Top-up degrees as alternative qualifications, both at BU and through our partners.**

## What is a Foundation degree?

A traditional Honours degree consists of three levels – Level 4 (Certificate), Level 5 (Intermediate) and Level 6 (Honours). A Foundation degree is just the first two of these, levels 4 and 5. On successful completion of your two years, you may want to go on to complete Level 6 by enrolling on a Top-up degree, either at BU or elsewhere.

## What is a Top-up degree?

A Top-up degree is usually a one-year course that allows you to complete the final year of study you need to convert your Foundation degree (or equivalent qualification, such as an HND) into a full Honours degree. You don't need to have studied your Foundation degree with us in order to apply for one of our Top-up degrees.

## Practical learning

Both Foundation and Top-up degrees tend to have a practical focus, ensuring that you're prepared for the workplace when you complete your course. If you study at BU, you'll have access to all of our outstanding facilities, from the gym at SportBU and our extensive library to subject-specific facilities, such as our clinical skills rooms and our food management studios.

## Top-up degrees offered at BU

### Accounting & Finance

BA (Hons) International Finance

### Business & Management

BA (Hons) Business & Management

### Design & Engineering

BEng/Meng (Hons) Engineering (part-time)

### Sciences

BSc (Hons) Marine Ecology & Conservation (delivered at Kingston Maurward College)

### Tourism & Hospitality

BA (Hons) International Hospitality & Tourism Management

**We work closely with a number of local partners to give you the opportunity to study a Foundation degree. These are available in a range of fields and provide the perfect gateway to higher education if you're not convinced university is for you.**

You can study BU Foundation degrees in the following subjects through our partners:

- FdSc 3D Computer Generated Imagery
- FdSc Computing
- FdEng Engineering: Marine Technologies
- HNC Engineering: Marine Technologies
- FdEng Engineering: Mechanical Design
- HNC Engineering: Mechanical Design
- FdEng Engineering: Manufacturing Management
- HNC Engineering: Manufacturing Management
- FdEng Engineering: Electronic Design
- HNC Engineering: Electronic Design

- FdSc Tourism Park Management

Our partners are:

- Bournemouth & Poole College
- Kingston Maurward College
- Wiltshire College & University Centre
- Yeovil College





# Important information

This guide describes the courses currently offered by Bournemouth University (“BU” / “we” / “our” / “us”). We have made every effort to ensure that this information is accurate at the time of printing. Current information is available on our website ([www.bournemouth.ac.uk/courses](http://www.bournemouth.ac.uk/courses)) and we will indicate if significant changes have been made.

## Courses subject to validation

As part of BU’s rigorous quality control procedures, every proposed new course, or change to any existing course, undergoes a process of scrutiny and validation to ensure that those changes meet the high standard required for approval by the Academic Standards Committee. We will flag on our website ([www.bournemouth.ac.uk/courses](http://www.bournemouth.ac.uk/courses)) courses that are under review and will highlight if significant changes are made as part of this process.

## Student agreement

When you accept an offer from BU, you are agreeing to our student agreement. When you register for your course online, you will be asked to read the student agreement and confirm that you agree to be bound by it. The student agreement forms the basis of the contractual relationship between you and us once you accept your offer of a place at BU. We’ve put information about our policies, procedures and other legal points in one agreement so they are easy for you to find.

Some of the information in the student agreement may not seem very important now, but it is best that you know where it is so that you are able to find it easily should you need the information later. For example, we explain what happens if we change something about your course and what will happen if something goes wrong. We explain how you can complain, how you pay your fees or apply for refunds and what your cancellation rights are. You can read through this agreement here: [www.bournemouth.ac.uk/important-information](http://www.bournemouth.ac.uk/important-information).

Some courses leading to a BU award are offered at other institutions. Students attending courses at other institutions leading to a BU award should refer to the institution for information about the agreement that will apply to them. However, some of BU’s procedures, such as complaints and academic offences, will apply.

For apprenticeship students studying an apprenticeship programme funded by the Education and Skills Funding Agency, our student agreement

sits alongside the Commitment Statement or Training Plan agreed by the apprentice with their employer and BU before commencing at BU.

## Tuition and other fees

Details of course and other fees are available on our website and will be confirmed at the time of offer. Information about how to pay tuition and other fees, what happens if you do not pay them, refunds and other important information about fees and charges, and how they may be changed is set out in our fees policy (see: [www.bournemouth.ac.uk/important-information, under Finance](http://www.bournemouth.ac.uk/important-information, under Finance)). You will need to contact us if an employer or other person will be paying your fees. You will remain personally liable for the payment of course fees if the employer, sponsor or other person does not pay on time. Registration for BU courses is online. During your registration process, you will be able to pay online or will be given details of how to pay by cheque.

## Students’ Union code of practice

Registered students of BU become members of the Students’ Union but they have a right to opt out of membership. Under the provisions of the Education Act 1994, the BU Board has approved a Code of Practice for the Students’ Union at Bournemouth University. It is published on BU’s website at [www.bournemouth.ac.uk/important-information](http://www.bournemouth.ac.uk/important-information).

## Data protection

The University collects and retains personal information, in various formats, about our current, past and potential future students for a variety of purposes as set out in the University’s privacy notices, which are accessible on the BU website: [www.bournemouth.ac.uk/privacy-notice](http://www.bournemouth.ac.uk/privacy-notice). The University holds this personal information securely, both in hard copy format and electronically, under the requirements of the data protection legislation.

The website and privacy notices provide further information for individuals about how to exercise their rights in relation to their personal data, including how to request a copy of the information held about them by the University.

## Changes

Every effort has been made to ensure the accuracy of the information contained in this prospectus, but details may have changed since this prospectus went to press.

The course information on our website ([www.bournemouth.ac.uk/courses](http://www.bournemouth.ac.uk/courses)) includes a list of the units that may be available for your course, including core and optional units. We do not guarantee that an optional unit will run or be available to all students. Your choice of units may be restricted by limits on timetabling, staffing, facilities, or the number of places on the unit.

It is important that we can update or amend courses. We do this to ensure that the curriculum, teaching and learning methods and forms of assessment are up to date, to maintain academic standards and enhance the quality of learning opportunities for students. We will normally only make changes if the overall effect of the changes is either neutral or advantageous to potential students. Negative changes may sometimes be unavoidable because of unforeseen issues such as staff availability, student numbers or other resources. BU will seek to minimise the impact of the changes on offer holders and any negative impact on student experience. If you have applied for a particular course, we will contact you if we make material changes that affect the course information in this prospectus or on our website.

# Getting to BU

We are based on two sites – the Talbot Campus and the Lansdowne Campus. The Talbot Campus is about two miles from Bournemouth town centre and beaches. The Lansdowne Campus is in Bournemouth town, a five-minute walk from the seafront.

## Bournemouth Airport

The airport is just a 15-minute drive outside of the town centre and there is a direct bus service that takes approximately 20 minutes.

## Southampton Airport

It takes around 45 minutes to reach Southampton Airport, either by driving or by a direct train.

## London airports

We are approximately a 1.5-hour drive from Heathrow Airport. If you want to travel by train, it takes around 2.5 hours.



## London

There is a direct train to London Waterloo that takes around 1 hour and 45 minutes.



## Birmingham

The direct train takes just over 3 hours, or you can drive to the city in approximately 3 hours.



## Oxford

Driving takes around 1 hour and 45 minutes, while the direct train takes approximately 2 hours.



## Cardiff

Driving takes around 3 hours, while the train journey takes a little over 3 hours.



## Edinburgh

It's around an 8-hour drive, while the train journey takes just over 7 hours.



## Manchester

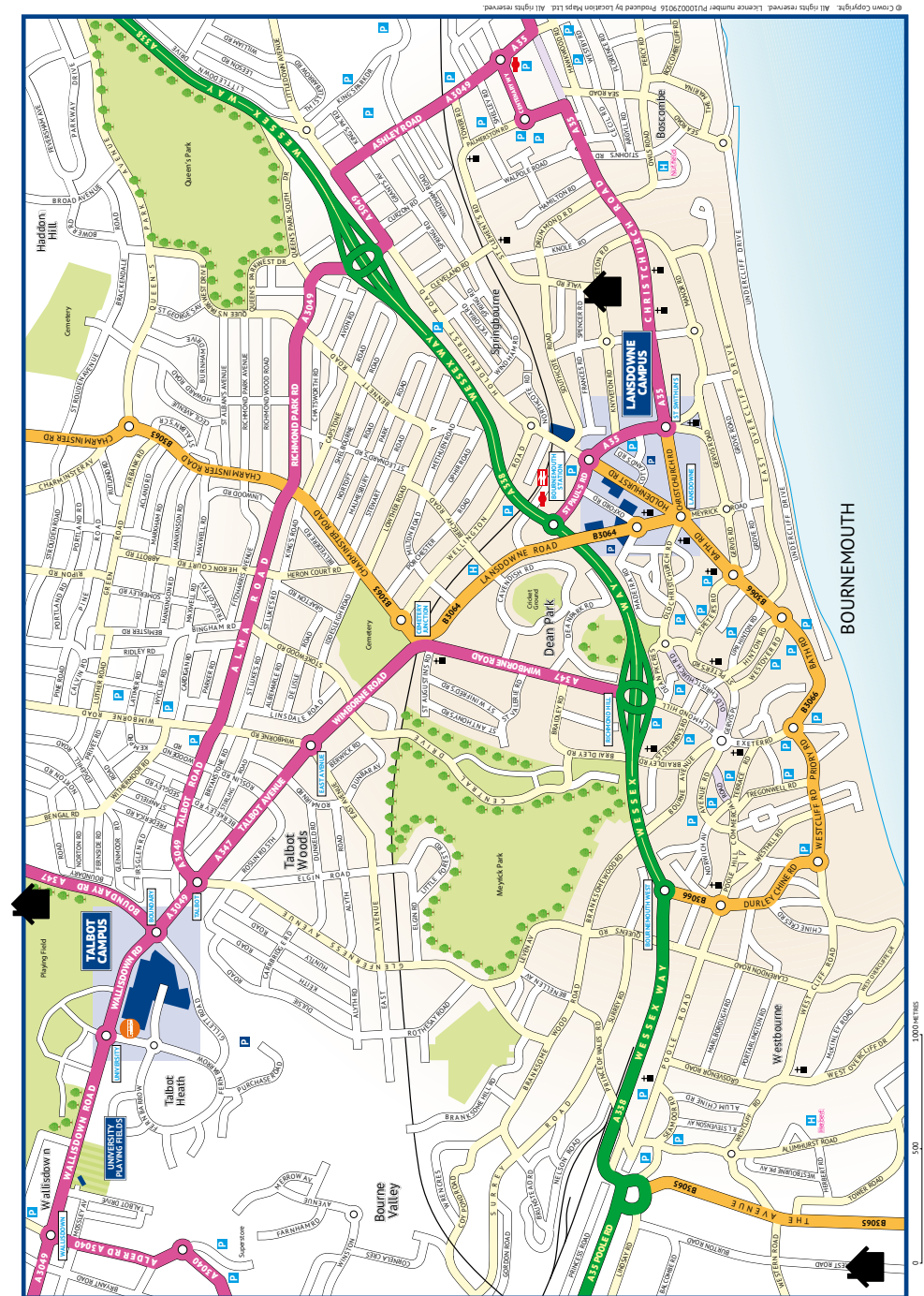
A direct train takes just under 5 hours. You can drive there in around 4 hours and 45 minutes.

# Our campuses

When you join us to study or for an Open Day, you'll experience life on our Talbot and Lansdowne campuses, just ten minutes apart using cycle routes or BU's frequent UNIBUS service.

Talbot Campus is home to the Faculty of Media & Communication and the Faculty of Science & Technology, as well as the undergraduate courses delivered by the Bournemouth University Business School. Lansdowne Campus is home to our Faculty of Health & Social Sciences (housed in our new Bournemouth Gateway Building) and the

postgraduate courses from the Bournemouth University Business School. It's also where you will find most of our Halls of Residence and The Old Fire Station – our student nightclub. Many of our students enjoy working and using spaces across both campuses, and for some, their curriculum is delivered across the two sites.



**1.** Many of our Halls of Residence are based around the Lansdowne Campus, close to the town, beach and the rail and coach station.

**2.** Our Student Village is based on Talbot Campus – lively day and night with many on-campus facilities.

**3.** Corfe House offers a halls option in Poole, close to the local town centre and the local rail and coach station.

# Index

<b>A</b>		
Accommodation	18	
BA (Hons) Accounting	52	
BA (Hons) Accounting & Finance	52	
BSc (Hons) Adult Nursing	84	
BSc (Hons) Anthropology	56	
BSc (Hons) Archaeological, Anthropological & Forensic Sciences	56	
BA/BSc (Hons) Archaeology	56	
BA (Hons) Archaeology & Anthropology	56	
<b>B</b>		
BSc (Hons) Biological Sciences	76	
BSc (Hons) Biomedical Science	82	
Bournemouth	10	
Bursaries	42	
BA (Hons) Business & Management (Economics)	58	
BA (Hons) Business & Management (Entrepreneurship)	58	
BA (Hons) Business & Management (Finance)	58	
BA (Hons) Business & Management (Global Operations)	58	
BA (Hons) Business & Management (HRM)	58	
BA (Hons) Business & Management (Marketing)	58	
BA (Hons) Business & Management (Project Management)	58	
BSc (Hons) Business Computing with Analytics	62	
<b>C</b>		
Careers & Employability	36	
Chaplaincy	30	
BSc (Hons) Children's & Young People's Nursing	84	
BA (Hons) Communication & Media	72	
BA (Hons) Computer Animation & Visual Effects	60	
BSc (Hons) Computer Science	62	
BSc (Hons) Computing	62	
Counselling	30	
BA (Hons) Criminology	64	
BA (Hons) Criminology with Law	64	
BA (Hons) Criminology with Psychology	64	
BSc (Hons) Cyber Security Management	62	
BSc (Hons) Cyber Security with Digital Forensics	62	
<b>D</b>		
BSc (Hons) Data Science & Artificial Intelligence	62	
BSc (Hons) Design Engineering	66	
<b>E</b>		
BSc (Hons) Ecology & Wildlife Conservation	76	
BSc (Hons) Economics	52	
BEng/MEng (Hons) Engineering (Part-time)	66	
BA (Hons) English	72	
Entry requirements	105	
Entry requirements for internationals students	46	
BSc (Hons) Environmental Science	76	
BA (Hons) Events Management	90	
<b>F</b>		
BA (Hons) Film	80	
BA (Hons) Film & TV Production	80	
BA (Hons) Film Production & Cinematography	80	
BA (Hons) Finance	52	
BSc (Hons) Forensic Biology	68	
BSc (Hons) Forensic Investigation	68	
BSc (Hons) Forensic Science	68	
Foundation Degrees	94	
Foundation Years	50	
Funding	42	
<b>G</b>		
BSc (Hons) Games Design	60	
BSc (Hons) Games Programming	60	
BSc (Hons) Geography	76	
<b>H</b>		
BA (Hons) History	70	
<b>I</b>		
BA (Hons) International Business & Management	58	
BA (Hons) International Hospitality & Business Management	90	
International students	44	
BA (Hons) International Tourism & Business Management	90	
BA (Hons) International Tourism & Hospitality Management	90	
<b>L</b>		
LLB (Hons) Law	74	
LLB (Hons) Law, Media & Creative Industries	74	
LLB (Hons) Law with Politics	74	
Library	26	
<b>M</b>		
BSc (Hons) Marketing	78	
BA (Hons) Marketing Communications	78	
BA (Hons) Marketing Communications with Advertising	78	
BA (Hons) Marketing Communications with Digital Media	78	
BA (Hons) Marketing Communications with Public Relations	78	
BEng/MEng (Hons) Mechanical Engineering	66	
BA (Hons) Media Production	80	
BSc (Hons) Medical Science	82	
BSc (Hons) Mental Health Nursing	84	
BSc (Hons) Midwifery	84	
BA (Hons) Multimedia Journalism	72	
BA (Hons) Multimedia Sports Journalism	72	
BA (Hons) Music & Sound Production	80	
<b>N</b>		
BSc (Hons) Networks & Cyber Security	62	
BSc (Hons) Nutrition	88	
<b>O</b>		
BSc (Hons) Occupational Therapy	54	
BSc (Hons) Operating Department Practice	54	
Open Days	48	
<b>P</b>		
BSc (Hons) Paramedic Science	54	
BA (Hons) Photography	80	
BSc (Hons) Physiotherapy	54	
BA (Hons) Politics	70	
BA/BSc (Hons) Product Design	66	
BSc (Hons) Psychology	86	
BSc (Hons) Psychology with Counselling	86	
BSc (Hons) Psychology with Forensic Investigation	86	
<b>R</b>		
Rules and regulations	96	
<b>S</b>		
Scholarships	42	
BA (Hons) Social Work	54	
BA (Hons) Sociology	64	
BA (Hons) Sociology & Criminology	64	
BA (Hons) Sociology & Social Anthropology	64	
BSc (Hons) Software Engineering	62	
SportBU	34	
BSc (Hons) Sport & Exercise Science	88	
BSc (Hons) Sport Coaching	88	
BSc (Hons) Sport Management	88	
BSc (Hons) Sports Therapy	88	
Students' Union	28	
Support	30	
<b>T</b>		
Tariff	105	
Top-up degrees	94	
BA (Hons) Tourism Management	90	
<b>W</b>		
Work placements	40	

# Timetable for your future



Mar - Aug 2024

Attend UCAS Fairs, university Open Days and overseas exhibitions



Subscribe to the student blog to hear what our students think

Sept 2024 - Jan 2025



UCAS online applications open from early-September



Write personal statement and make 5 course choices



UCAS online applications close at 6pm for UK students



Universities make offers

Feb - Apr 2025

Check out our scholarship and bursary packages

Universities continue to make offers and you'll be replying to them. Attend **interviews, Open Days** and meet our staff in your country

UK students should apply for student loans via **Student Finance England** before the end of **May 2025**



Opportunity to apply late via UCAS Extra (until 30 June 2025)

May - Jun 2025

If you applied by **29 January**, universities will have made you an offer by the **end of May**. You will need to make your decision by **early June**



**Deadline to apply for student loans** (Student Finance England)

If BU is your firm choice, see if you're eligible for one of our **bursaries or scholarships**



**UCAS application deadline for international students**



**International students** – apply for a **Pre-Sessional English course** if you haven't met the **English language entry requirement**



You can complete your accommodation application if you've picked BU as your firm choice and meet the conditions of your offer. Visit: [www.bournemouth.ac.uk/accommodation](http://www.bournemouth.ac.uk/accommodation) to see where you could live

Jul - Aug 2025



**International Baccalaureate results** published in early July

**BTEC results** published



**A-level and Advanced Diploma results**

You'll receive your **official Welcome Pack**



Sign up for the **International Students' Orientation Programme** and **Global Café**



Enjoy the summer and prepare for university



Visit our **Arrivals website** to find out more about getting started at BU [www.bournemouth.ac.uk/belongatbu](http://www.bournemouth.ac.uk/belongatbu)



Sept 2025



**Airport pick up, Arrivals Week and term starts**

## It all starts here...

You've heard the stories, read the prospectus – all that stands between you and BU is an application.

### Entry requirements

We accept applications through UCAS and use the UCAS tariff to show our entry requirements. The table below gives a guide to the most common combinations to make our tariff requirements. Visit [ucas.com](http://ucas.com) for a calculator and to set up your personalised **UCAS Hub**.

Qualifications	Tariff points				
	104	112	120	128	136+
A-levels	BCC	BBC ACC	BBB ABC A*CC	ABB A*BC	AAB A*BB
BTEC National/Cambridge Technical Extended Diploma	DMM	DMM	DDM	DDM	DDD
BTEC National/Cambridge Technical Diploma	D*D	D*D*			
A-level and BTEC National/Cambridge Technical Diploma combinations	A* / MP B / MM	A / MM C / DM	A* / MM B / DM	A / DM C / DD	A* / DM B / DD C / D*D
A-levels and BTEC National/Cambridge Technical Extended Certificate combinations	BC / M AB / P	CC / D BB / M AA / P	CC / D* BC / D AB / M A*A / P	BC / D* BB / D A*B / M A*A* / P	BB / D* AB / D A*A / M
T-levels	Merit	Merit	Merit	Distinction	Distinction
Access to HE Diploma	Any combination of Distinctions, Merits and Passes to make up the tariff points				

### Your offer

Your offer may also be subject and grade specific, specifying a number of tariff points to be achieved in a required subject. If you are studying a broader qualification, please contact us to confirm the units you are studying will meet the entry requirements.

Some courses might contain further selection measures – looking at a portfolio of your work, or require you to attend an interview.

As well as the qualifications needed for your course, you'll need a minimum of Level 2 (UK Regulated Qualifications Framework) in English and Maths – typically GCSE grades C/4 and above. There are no Level 2 requirements for entry onto Foundation Years.

Visit [www.bournemouth.ac.uk/ug-courses](http://www.bournemouth.ac.uk/ug-courses) for full details of entry requirements, detailed course information including contact hours and what's included in tuition fees.

### MyHub application portal

When we receive your application, you'll receive a login for MyHub – where you can track your application – and our Accommodation Portal too. Contact our Future Students Enquiry Team if you have any questions.

### If things don't go to plan

If your results don't match the offer we have made you, you may still get your place, as we'll look at your application again and consider your potential to succeed on the course. See our website for more details.

# UCAS Tariff Table

We've provided comparisons for the most typical qualifications, but for full details visit [www.ucas.com](http://www.ucas.com).

BTEC Nationals/Cambridge Technicals				T-levels	Tariff points	A5-level	A-level	International Baccalaureate Higher Level Certificate <sup>2</sup>	Extended Project Qualification
Extended Certificate	Foundation/ Subsidiary Diploma <sup>1</sup>	Diploma	Extended Diploma	Distinction*	168				
					160				
					152				
					144				
					128				
					120				
					112				
					104				
					96				
					84				
					80				
					78				
					72				
					64				
					60				
					56		A*	H7	
					48		A	H6	
					40		B		
					36				
					32		C	H5	A*
					28				
					24		D	H4	A
					20		A		B
					16		B		C
					12		C		D
					10		D		
					8				
					6		E		E

**A-level Double Award**  
This award is the equivalent of two A-levels. You should add the tariff points of your two grades together to calculate the value of the double award.

**Access to HE Diploma**  
BU accepts any combination of Distinctions, Merits and Passes to make up the tariff points for the course.

<sup>1</sup>Subsidiary Diploma applies to Cambridge Technicals only

<sup>2</sup>Part of the IB Diploma (component scores)

## Open Days:

Saturday 12 October 2024

Saturday 26 October 2024

Saturday 16 November 2024

Wednesday 15 January 2025

Saturday 14 June 2025

Tel: +44 (0)1202 961916

[www.bournemouth.ac.uk](http://www.bournemouth.ac.uk)



This prospectus is made of material from well-managed FSC®-certified forests and recycled materials, and we've balanced the carbon produced in the production process. **This prospectus is 100% recyclable.**