



Download our free
Open Day app

Department of Life & Environmental Sciences

BSc Geography

Dr Marin Cvitanovic, Programme Leader

#BUopenday
#belongatbu

Contents of this talk

- Key features of the Geography course
- Units
- What to expect
- Placements
- Transferable skills and experience (employability)

Common elements of our courses

- Scientific education and analytical skills
- Strong emphasis on transferable skills and employability
- Two 5 week placements (end of 1st and 2nd year) or optional 30 week placement (3rd year)
- Residential field course in UK (1st year) plus optional international field course (2nd year)
- Independent research project (3rd year)



We are excellent teachers and lecturers

- Our BSc Geography (hons) is **accredited by the Royal Geographical Society** (with IBG).
- We constantly receive high NSS scores from our students
- Our 3-year overall satisfaction score average is 88%
- Staff are good at explaining things: 96%
- I have been able to contact staff when I needed to: 91%



Department Athena SWAN Bronze award

- Athena SWAN recognises good practices in the advancement of gender equality
- Our self-assessment team and action plan continue to improve our practices



Geography key features

- Great national and international fieldwork opportunities (Curricular and Extra-curricular)



Weymouth



Costa Rica



Peak District



Cartagena (Colombia)

International Field Trip to Costa Rica



Geography key features

- Benefiting of the outstanding natural surroundings
- World Heritage Site
- Biodiversity hotspot
- National Parks and Nature Reserves



Local beaches



Jurassic Coast World Heritage Site



New Forest National Park



Poole Harbour Special Protection Area

Focusing on skills development and fieldwork



Landslide management



Mapping skills



Marine surveys



Questionnaire surveys



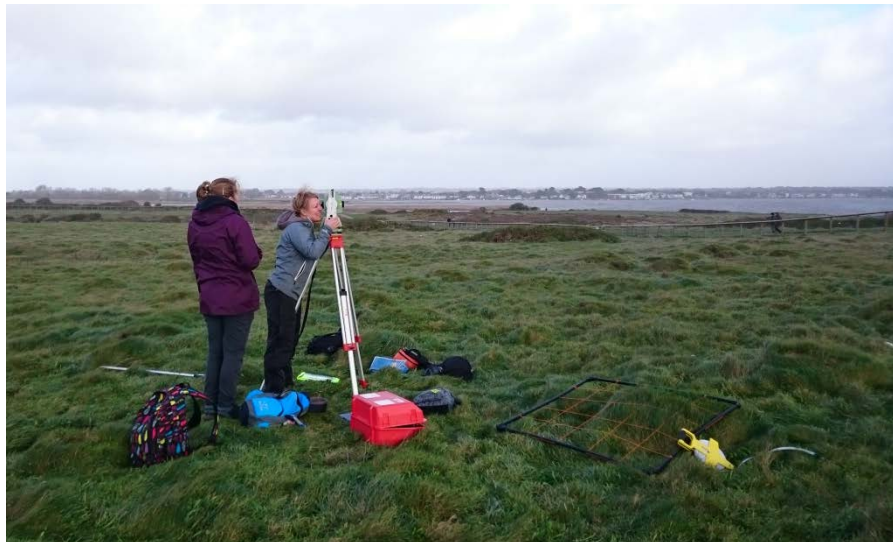
Topographic surveys



Remote sensing

Facilities and equipment

Including new undergraduate teaching and research laboratories and generously equipped field store



Geography key features

Embedding employer-values

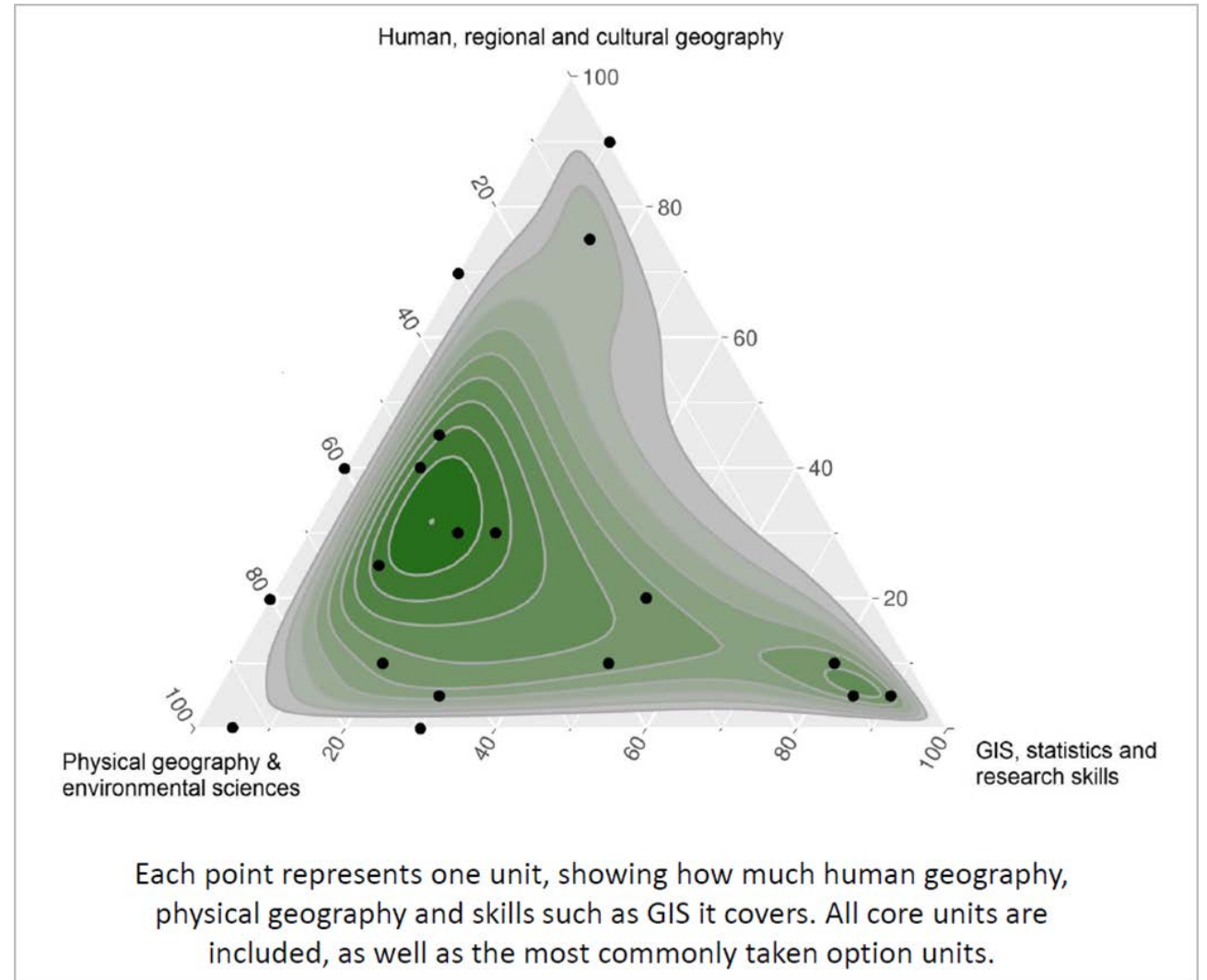
- Competence in communication,
- Teamwork/collaboration,
- Planning and organising,
- Analytical thinking and problem solving,
- Personal effectiveness,
- Research, managing information,
- Information technology,
- Numerical interpretation



Sustainability policy at the local Wessex Water sewerage treatment plant

Geography key features

- Research-led teaching and scientific underpinning of courses
- Lecturers active in their areas of research and enthusiastic about their subjects
- Staff with diverse interests



First Year (all core units)

- **Geographic Research Skills**

- What is the scientific method
- How to do simple data analysis
- How to write a report

- **Practical skills in Geography**

- Field surveying
- Social survey methods
- Working with spatial data and mapping



First Year (all core units)

- **Physical Geography**

- Plate tectonics in macro-scale geography
- Earth's atmospheric system
- Main geomorphological land-systems in the UK

- **Human Geography**

- Society and space
- Urban and rural geography
- Politics, identities, nationalism



First Year (all core units)

- **Earth and Society**

- Physical impacts of glacier retreat
- Urbanization, transport & the environment
- Natural hazards

- **Residential Field Trip**

- Application of skills learned during the year
- Landslides, biogeography and rural life
- One week in the Peak District



Second Year (3 core units)

- **Geographic Information Systems**

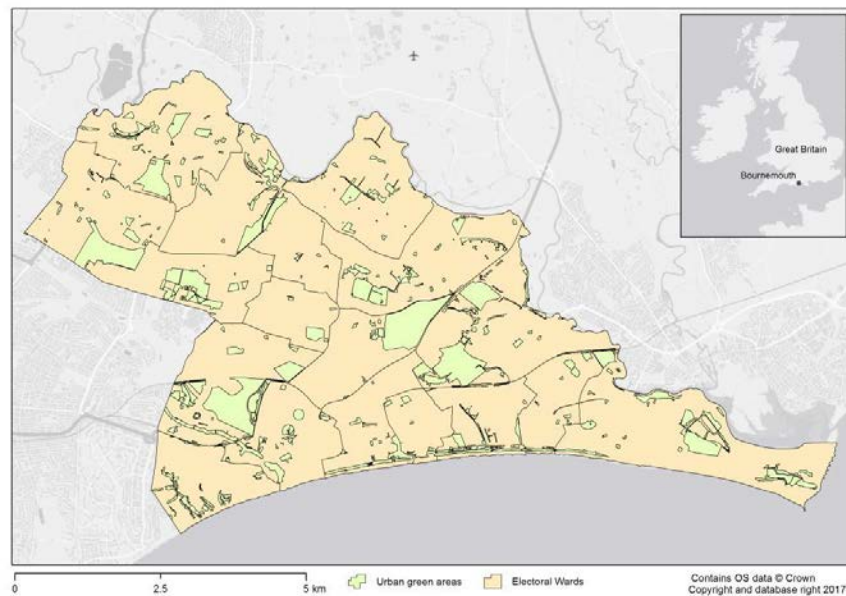
- GIS project design and implementation
- Data capture and analysis
- Data presentation as cartographic maps

- **Marine Geography**

- Coastal and marine environments
- Drivers of coastal and marine environmental change
- Integrated coastal management

- **Advanced Skills in Geography**

- Quantitative and qualitative methods
- Introduction to statistics
- Developing a research proposal



Second Year Optional Units (choose 3)



Environmental Pollution (I)



Ecosystems (I)

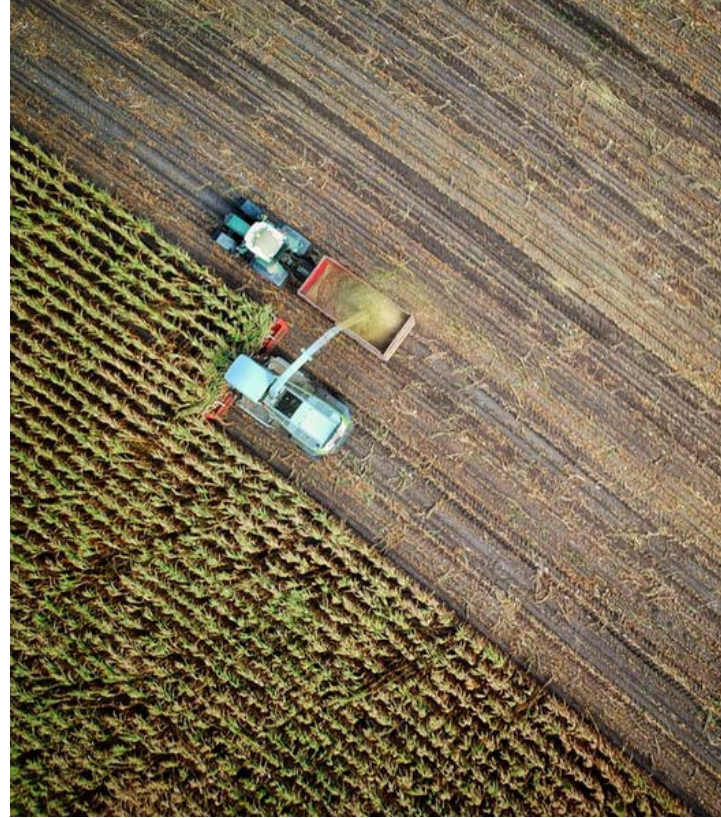


Urban Social Geography (I)

Second Year Optional Units (choose 3)



Application of Environmental Sciences (II)



Environmental and Societal Challenges (II)



Understanding Globalisation (II)

Second Year Optional Units (choose 3)



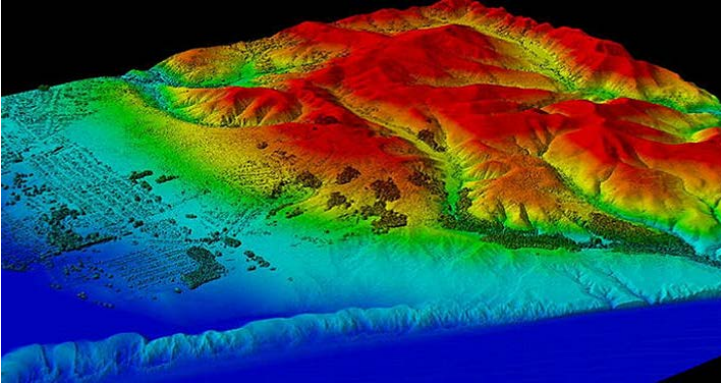
Quaternary Environments (II)



International Field Trip (II)

- You are free to mix up the units any way you like (you don't need to focus on only human or only physical geography)
- One unit optional in the 1st semester, two units optional in the 2nd semester

Third Year Optional Units (choose 4)



Environmental Remote Sensing



Earth Surface Processes and Landforms



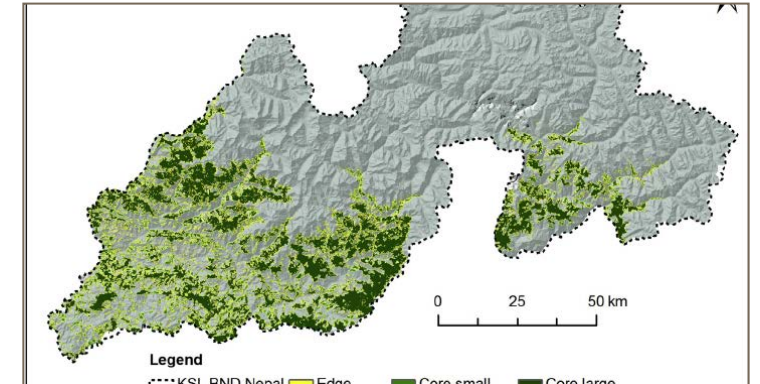
Biological Oceanography



Emergence and Extinction



Wildlife & Ecotourism



Applied Biogeography

Third Year Optional Units (choose 4)



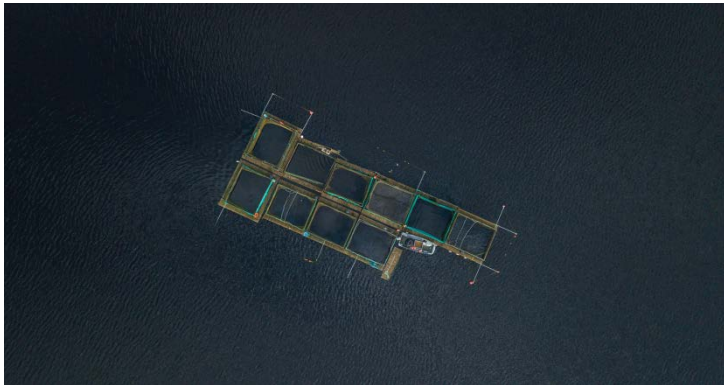
Environmental Law and Management



Globalization and Sustainable Development



Cultural Ecology



Marine Conservation



Climate and Environmental Change



Freshwater Resource Management

Spend a semester abroad

- University of Malta (BA Geography)
- One semester during your second year
- ERASMUS+ scheme (tuition fee covered & eligible for a scholarship)



Placements

- Compulsory part of your studies at BU
- A dedicated placement co-ordinator
- Series of lectures (timetabled!)
- Careers & Employability Service



Importance of the work placement

“There's no substitute for practical experience!

Two thirds of employers believe gaining practical experience is the most valuable step you can take to improve your employment prospects. Practical experience brings advantages that nothing else can match.”

(Source: 2010 CBI/EDI Education and Skills survey).

Example placements

- **Survey Assistant** - Hillcrest Surveys Ltd, Bournemouth
- **Marine Licensing placement** - Marine Management Organisation, Newcastle
- **Waste Awareness Office** - Bournemouth Borough Council
- **GIS analysis** - Halcrow, Abu Dhabi looking at coastal management and development using GIS
- **Conservation Ranger** - National Trust, Sissinghurst Castle, Cranbrook
- **Research assistant** - Forest Research Centre, Farnham
- **Carbon Management Officer** - Poole Borough Council



Feedback on placements

“The best aspect of the placement is achieving a pay rise and acknowledgement for the hard work I have done resulting in the opportunity to work for the company next year and a position after university full time. I have hugely developed my professional confidence and communications skills.” (the student)

“Once again, we’ve been really happy with [the student’s] work and the commitment he has shown to what is a demanding job, particularly over the summer. This year he has also been writing reports for me and I’ve been impressed with the standard of his work which has been a massive help to me in managing my own work load. I suppose the biggest compliment we can pay is that we will be offering him a permanent job all being well when he’s completed his studies next year.” (placement host)

Life & Environmental Sciences International Fund Placement Opportunities Fund



Student Research Teams for project team-based experience



Perceptions of urban planting for pollinators

- 10 hours per week semester 2 - flexible
- £9.35 per hour, work in a team of three
- Apply by 9th December, interview by Skype

<https://mycareerhub.bournemouth.ac.uk/students/jobs/detail/658335/research-assistant-group-publi>



Other ways you can get involved at BU and build your CV

Department Gold Award for Green Impact



Green Impact is an environmental accreditation delivered by the National Union of Students (NUS)

Student societies



Undergraduate conferences

BU
Bournemouth
University

2015 SURE Conference

- Showcasing Undergraduate Research Excellence -

Open to all BU UG Students and recent graduates.

Showcase work you have done for:
Coursework - Placement - Dissertation or Volunteering.

Submit your abstract before
Monday January 5 2015 at
surebu.org.uk

For more information contact:
sure@bournemouth.ac.uk

We are **SURE**. What about you?

Creating Global Talent

BU
Bournemouth
University

For more information visit: www.bournemouth.ac.uk/student/global-talent

BU
Bournemouth
University

BCUR17

25-26 April 2017

BCUR BRITISH
CONFERENCE OF
UNDERGRADUATE
RESEARCH

"I wanted to let you know that one of the key things [...] impressed [in the interview] was the SURE conference. It got me the job I have now... The conference gave me the confidence to think my work was good enough to share, which has since proved invaluable."

REAL-WORLD ENVIRONMENTAL ISSUES ADDRESSED WITH PRACTICAL EXPERIENCE AND SCIENTIFIC EXPERTISE



"Working with BUG helped develop my career opportunities. Now I get to help others develop theirs!"
Josie, now a lecturer at Sparsholt College

BOOST
YOUR CV!



"I had a fabulous time working with BUG – being able to learn and put new skills into practice has really helped to define my career development" Ash, BSc Biological Sciences



"A fantastic opportunity to get real-world experience with the BUG consultancy team. A really enjoyable perk to my time at BU!" Catie, PhD student



BU Global Environmental Solutions (BUG) is the environmental consultancy arm of the Faculty of Science and Technology at Bournemouth University, located within the Department of Life and Environmental Sciences.

Opportunities in virtually any environment-related area:

- Planning
- Consultancy
- Tourism
- Teaching
- Government
- Land surveying
- Environmental regulation
- Energy sector
- Research degree



Example destinations

- **Environmental Consultant** - Nautica Environmental Associates, United Arab Emirates
- **Asset Mapping Officer** - London Borough of Camden
- **Researcher** - Acre recruitment agency (corporate responsibility and sustainability sector)
- **Environmental Scientist** - Wessex Water
- **Director** - Applied Resilience Ltd, Staines (emergency response support, crisis management, emergency planning and counter terrorism)
- **Marketing and Communications Executive** – Carbon Trust, London
- **Development Assistant** - Aster Homes (development of affordable housing)
- **Trainee land surveyor** -Technics Group, Guildford
- **MSc Climate Change Science and Policy** - Bristol University
- **Environmental Engagement Officer** - BCP Council

Bespoke induction programme

You will receive a tailored induction programme focused on:

- The transition to university education
- Professional skills
- Personal goal setting
- Strategies for success
- Developing networks
- Extracurricular activities:
e.g. student clubs & societies, volunteering opportunities



Academic and personal development throughout your study

- Peer-assisted learning (PAL) sessions
- GROW@BU
- Programme leaders
- Personal tutor
- Student reps
- Student Champion



Support available

Academic support

- Disability & Additional Learning Support
- Language Centre
- Library & Learning Support
- Study Support
 - Academic writing
 - Critical analysis
 - Exam and revision techniques
 - Presentations
 - Referencing
 - Avoiding plagiarism

Health and wellbeing

- Chaplaincy
- Counselling
- Medical Centre

Dedicated Student Support

Employability Development Skills

And much more



£200m facilities investment



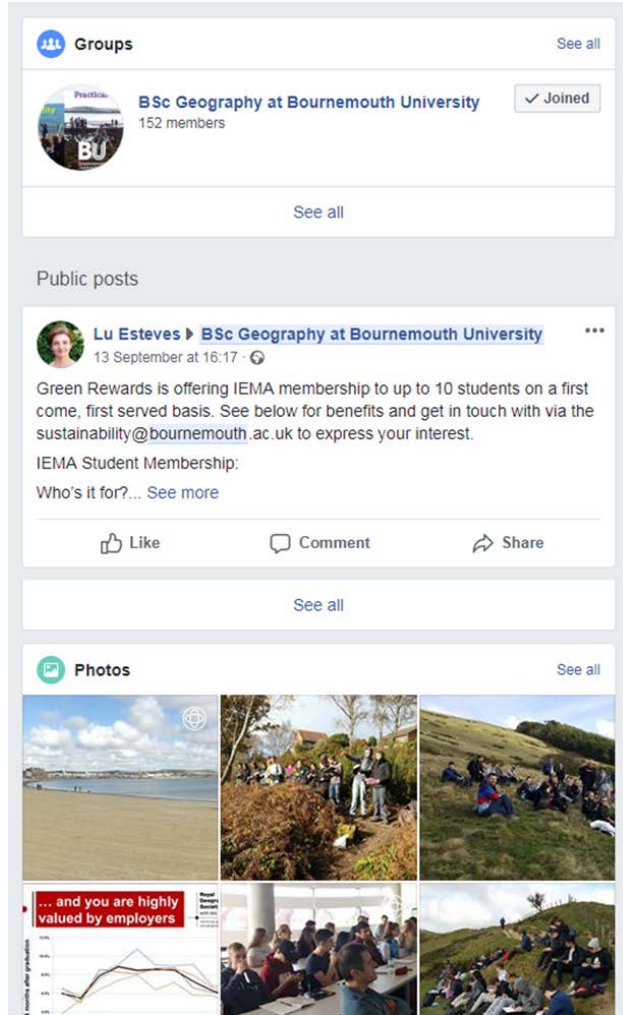
Bournemouth... a great place to study and live



Your future?



Follow us online



- Facebook: BSc Geography at Bournemouth University
- Twitter: @BmouthGeography
- Instagram: @geographers_bu

After this talk

- A visit to our Department display room (**FG04 in Fusion Building**) to find out more about:
- our student research & placements
- our departmental environmental consultancy
- Student Environment Research Teams
- see some of our field equipment
- chat informally with our current students



Department of Life and Environmental Sciences

