



Welcome to BU
BA (Hons) History

Dr Laura Ramsay
Senior Lecturer in Modern History

What is studying history at BU like?

History at  is...
Bournemouth
University

New

Modern

Small

- How will I be taught?
- How will I learn?
- How will I be assessed?

Why History at BU

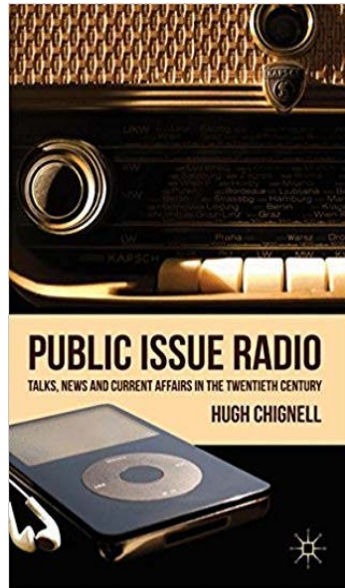
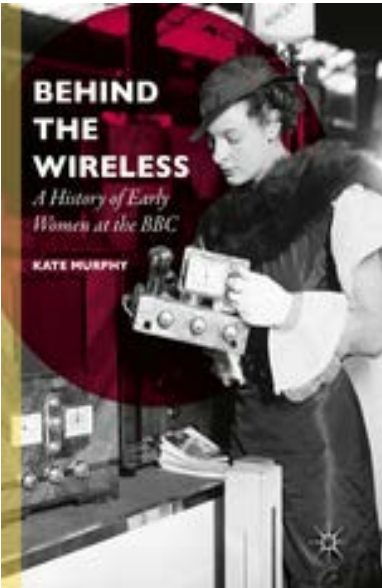
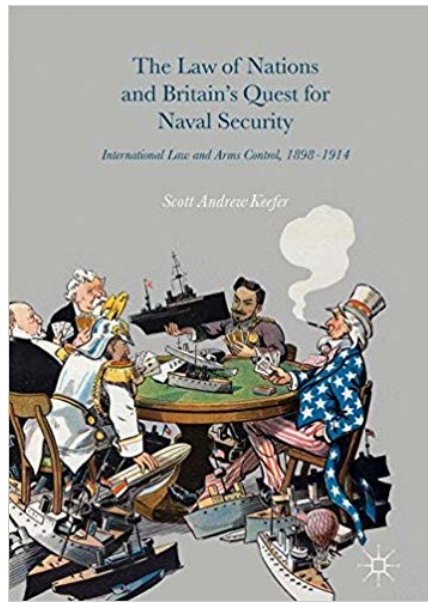
- Vocational focus
- Placement (work experience) is compulsory
- Focus on 'public history'
- Focus on the relationship between history in universities and the wider world
- Excellent teaching team with a range of experiences

"It has been a pleasure working with the students. They have impressed us with their enthusiasm, commitment and professionalism. We wish them well in their future endeavours."

Emma Ayling, Director of the Priest House Museum, Wimborne

"Students are encouraged to reflect upon the skill set they are acquiring within the study of History and also how this skill set applies to the wider world. [...] an excellent (and unusual) emphasis on creativity and flexibility."

Comments from our External Examiner



Year One

Historical Skills

The Making of Modern Britain, 1750 to 1945

Media Histories

Historical Evidence

European Histories

History in the Public World

Year Two

The Long American Century

Interpreting History

Post War Britain, 1945 - 2000

Community Histories

Option

Option

Placement

Year Three

The History Dissertation

The History Graduate Project

Option

Option

Year One

Historical Skills

The Making of Modern Britain, 1750 to
1945

Media Histories

Historical Evidence

European Histories

History in the Public World

Year One

Historical Skills

The Making of Modern Britain, 1750 to
1945

Media Histories

Historical Evidence

European Histories

History in the Public World

Year Two

The Long American Century

Interpreting History

Post War Britain, 1945 - 2000

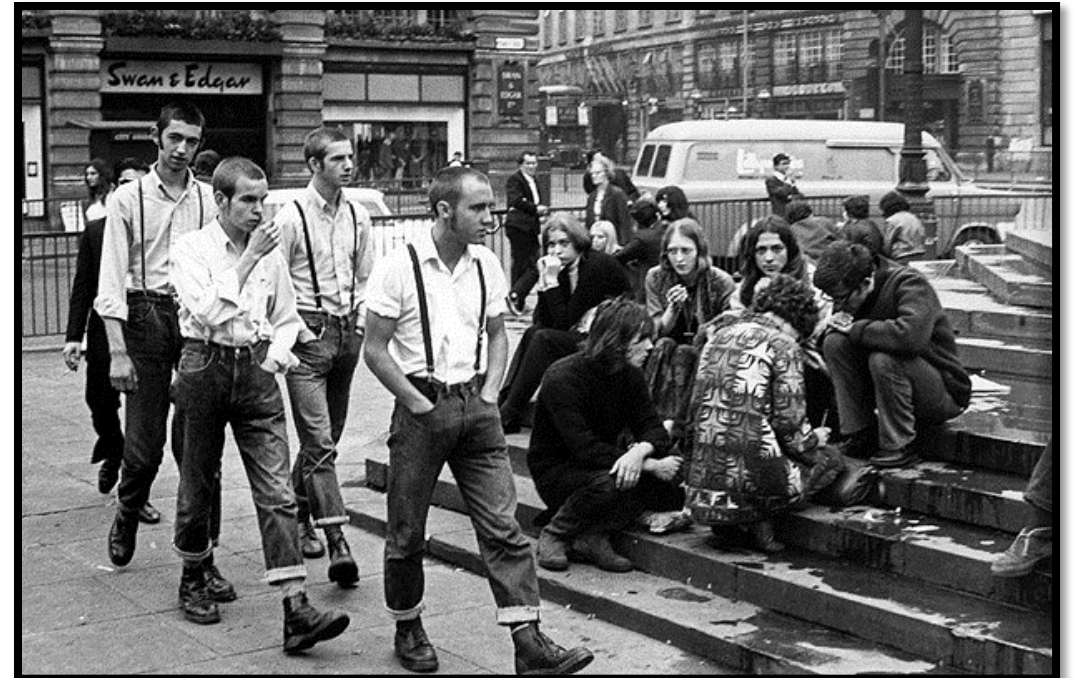
Community Histories

Option

Option

Year Two Options

- Cold War Culture
- Youth Culture and Politics
- Strikes, Riots and Black-outs: Britain in the 1970s
- Women and Equal Rights, 1850 – 2000
- Migration Histories
- History of Political Thought
- The Victorians
- Before the Deluge: Europe and the World on the Eve of the First World War
- The Twenty Years' Truce: Global Culture and Politics in the Interwar Era



Placement:

- 4 weeks during the summer between Year Two and Year Three

or

- 30 weeks between Year Two and Year Three

BA (Hons) History

Year One

Historical Skills

The Making of Modern Britain, 1750 to 1945

Media Histories

Historical Evidence

European Histories

History in the Public World

Year Two

The Long American Century

Interpreting History

Post War Britain, 1945 - 2000

Community Histories

Option

Option

Placement

Year Three

The History Dissertation

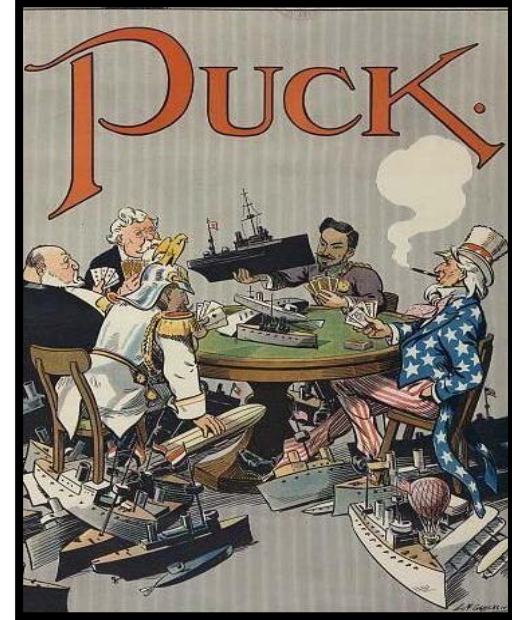
The History Graduate Project

Option

Option

Year Three Options

- History and Political Struggle: International Perspectives through Film
- Permissive Britain? Sexual Revolution, Reaction and Remembering, 1945-1990
- No Place Like Home: Housing, Homes and Homelessness Since 1900
- The Suez Crisis
- Woman's Hour: 60 Years of Social Change?
- Cabinets, Conventions, and Crises: International Responses to Conflict and Security, 1856-1939



BA (Hons) History: Recent Dissertation Examples

- British Media and the Isle of Man internees
- The Lives of the Women of Kingston Lacy
- Experience of Irish Immigrants in West London 1950-2000
- The Opium Wars
- Public Information, Media and the Cold War
- British Fashion and Social Change
- Portuguese Immigration
- Margaret Thatcher's Cultural Image
- Women Codebreakers in World War II
- British Boxing and the Colour Bar



BA (Hons) History: The Graduate Project

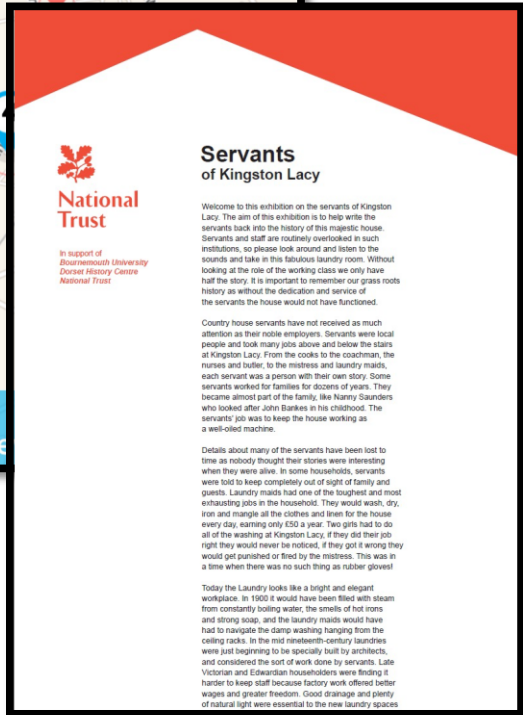
Mary Wollstonecraft

Family life

Mary left her family home in 1755 to become a Lady's companion to a widow in Bath named Sarah D. but found that she was not suited to this role due to her difficult relationship with her employer. She returned for a brief period in 1780 to look after her dying mother.

Mary chose to reside with the family for two years. Fanny Blood remained important to Mary with 'opening her mind'. Newington Green, a Dissenting community, moved her to Lisbon, hoping it would improve her health. Fanny died of consumption after her first child after.

"for with friends years to ruling"



Project Clients and Connections:

- The National Trust Kingston Lacy
- Highcliffe Castle
- Royal National Lifeboat Institution
- Shelley Frankenstein Festival
- Tolpuddle Martyrs Museum
- Priest House Museum
- Dorset History Centre
- Christchurch Priory
- Lighthouse Arts Centre

Teaching, Learning, and Assessment



- Lectures, seminars, tutorials, workshops, masterclasses
- Independent study
- Guest lectures
- Individual work and group projects
- Traditional assessments such as essays and exams
- Creative assessments such as posters, presentations, reviews, reports, curated exhibitions, mock conferences, oral history interviews, websites

After Graduation: Skills and Careers

Studying history at degree level develops a range of transferable skills, including:

- research ability
- scrutiny of evidence
- analysis
- synthesis, dealing with complexity
- independence of thought
- construction of reasoned arguments
- clarity and concision
- communication skills
- project management

History graduate destinations:

- teaching
- archives and heritage
- journalism
- human resources
- local and central government
- marketing and public relations
- publishing
- broadcasting
- law and legal services
- accounts and finance
- further study

Being a student at BU: support and services

- Academic Advisor (personal tutor)
- Work experience placement / sandwich year
- Study abroad
- Careers team
- Learning support
- Student support
- Student wellbeing
- Library
- SUBU
- Nerve Student Radio
- Clubs and societies



What are we looking for? Entry requirements

- Passion for history
- Creativity, ambition, and engaging ideas
- Motivation and hard work
- Commitment
- Ability to work successfully independently as well as in a team

Entry requirements (see our website for full details):

- **For September 2021 and September 2022 entry:**
 - Typically 104 – 120 UCAS tariff points including a minimum of two A-levels or equivalent
 - If you do not meet our main entry requirements for the degree, you might want to consider our foundation year, a one-year course that will prepare you for degree-level study
- **International entry requirements:**
 - If English is not your first language, you can find details of the international qualifications we accept, and what level of study they apply to, on our website



**Bournemouth
University**



Contact us

+44 (0)1202 961916

futurestudents@bournemouth.ac.uk

Our live chat service is open Monday to Friday, 9am to 5pm (closed Friday 11am to 12 noon).