

# Your home from home.

Accommodation for first  
year undergraduate students.

#BUOpenDay  
#BelongAtBU



# Your home from home

- You may choose to live in hospital accommodation at your placement location, as you will experience the full 24-hour shift pattern, including weekend and night shifts.
- If you are studying some of our Healthcare courses, you will require accommodation with a 50-week tenancy. We have specific options available, although shorter (40-42 weeks options) could be selected and you opt for an additional Summer let.

## **You have three main options**

- Hospital accommodation (arranged direct)
- Halls of Residence (booked through BU)
- Shared houses (booked through BU/LettingsBU)

# Course-specific options

- **Nursing, Midwifery and Operating Department Practice**
  - If you decide to stay near placement locality, you will need to travel to Bournemouth to attend lectures. You will not be eligible to claim travel expenses.
  - Those who decide to stay in BU halls and travel to your placement may be able to claim back dual travel and accommodation expenses.
  - If you require your car for transportation - no parking at BU halls of residence but some shared houses may have a parking space or nearby roadside parking.
- **Physiotherapy, Occupational Therapy and Paramedic Science**
  - Don't normally need hospital accommodation so you can choose to stay in halls.
  - Paramedic Science students need to ensure they have travel means to reach their placement locality, which can be in a rural area where there's no easy-access public transport. The majority of Paramedic Science students usually try to find accommodation that offers parking e.g. Unilets.

Please note, you may not be informed of your placement location until Summer, but Hospital accommodation can be simple & easy to arrange.

# Hospital accommodation

Hospital accommodation and contact details are on our website:  
[www.bournemouth.ac.k/accommodation-hss](http://www.bournemouth.ac.k/accommodation-hss)

Hospital accommodation can be for all three years of study

## **Dorset County Hospital NHS Foundation Trust (Albany Court)**

Find out about the accommodation available if your placement location is the Dorset County Hospital NHS Foundation Trust.

## **Musgrove Park Hospital**

Read about the accommodation available at Musgrove Park Hospital and find out how to apply for a room if this is your placement location.

## **Royal Hampshire County Hospital**

Find out about the accommodation available if you will be completing your placements at Royal Hampshire County Hospital.

## **St Mary's Hospital Newport**

Read about the accommodation available if you are completing your placements at St Mary's Hospital Newport.

## **Hampshire Hospitals NHS Foundation Trust**

Read about the hospital accommodation available if you are on placement with the Hampshire Hospitals NHS Foundation Trust.

## **Poole Hospital NHS Foundation Trust**

Discover where you could live if you are based at Poole Hospital NHS Foundation Trust for your placements.

## **Salisbury Hospital NHS Foundation Trust**

Learn about the available accommodation if you are completing your placements at Salisbury Hospital NHS Foundation Trust.

## **Yeovil District Hospital**

Learn about the available accommodation if you are going to be completing your placements at Yeovil District Hospital.





# It's going to be great...

- A wide variety of accommodation options, both on and off-campus and in halls of residence or BU managed housing
- Good transport links to the university campuses from all sites
- Cycle storage
- Internet connection
- Laundry facilities



# Bournemouth and the local area





# Lansdowne Campus

**15 mins**

Talbot Campus by bus or  
bike

**10 mins**

Town centre  
The beach  
Bournemouth Gardens

**5 mins**

Bournemouth Rail/Bus  
station  
Supermarkets and  
grocers  
Between all halls blocks  
The Old Fire Station

## Lansdowne halls

- Bailey Point
- Chesil House
- Cranborne House
- Dorchester House
- Lyme Regis House
- Purbeck House



# Bailey Point – Guarantor required

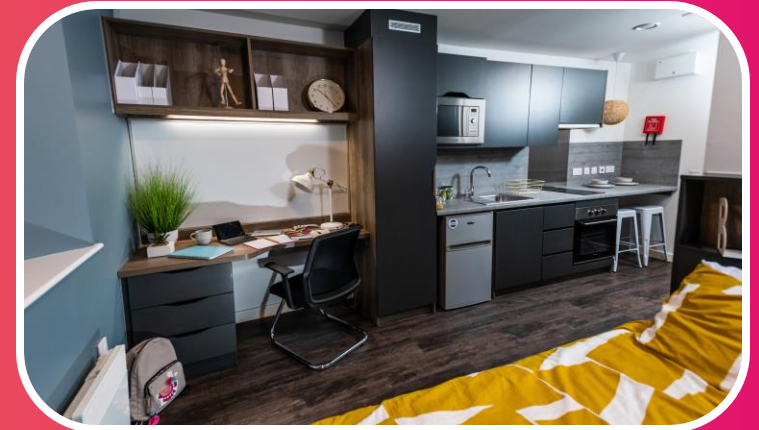
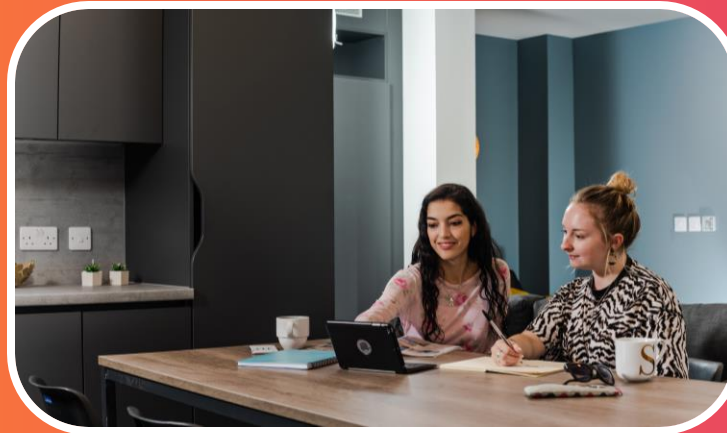
£250 deposit

**£199.58 pw** – 42 weeks (standard flat)

**£233.17 pw** – 50 weeks (standard flat)

**£245.15 pw** – 50 weeks (prem. studio)

- 550 students at this accommodation
- 5-8 bed flats
- En-suite in all rooms
- Small double bed
- Common room
- Gym



# Chesil House – Guarantor required

£250 deposit & two weeks rent in advance against the third rental instalment

**£169.98 pw** – 42 weeks

- 200 students at this accommodation
- 5 or 6 bed flats
- En-suite in all rooms
- Common room



# Cranborne House – Guarantor required

£250 deposit & two weeks rent in advance against the third rental instalment

**£156.02 - £175.62 pw** – 42 weeks (flat)  
**£177.80 pw** – 50 weeks (flat)

- 500 students at this accommodation
- 6 or 7 bed flats
- En-suite in all rooms
- Common room

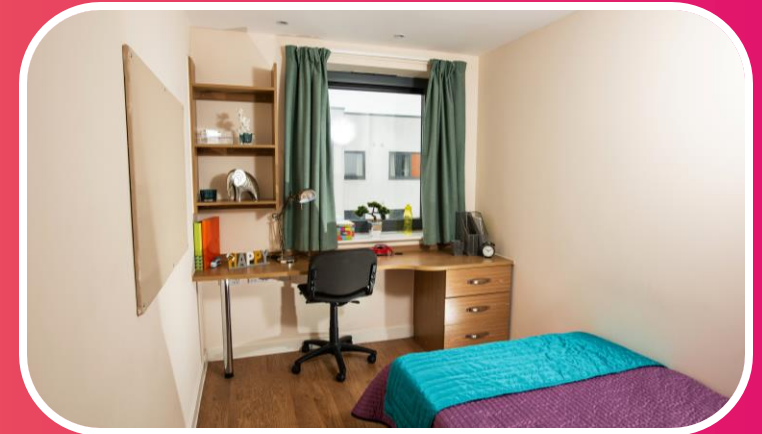


# Dorchester House

£250 rent instalment 1

**£184.23 - £195.38 pw** – 42 weeks (flat)  
**£220.37 - £229.80 pw** – 42 weeks (studio)

- 590 students at this accommodation
- 3-7 bed flats
- En-suite in all rooms
- Small double bed in all rooms
- Common room
- Gym

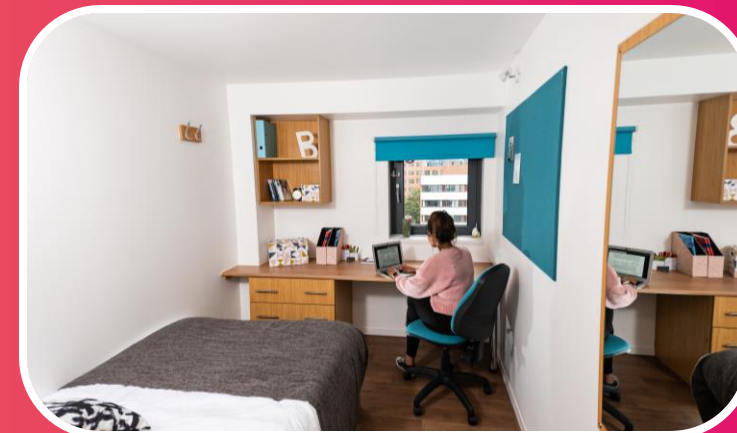


# Lyme Regis House – Guarantor required

£250 deposit & two weeks rent in advance against the third rental instalment

**£180.12 pw** – 42 weeks (flat)  
**£198.98 pw** – 50 weeks (studio)

- 400 students at this accommodation
- 5 bed flats
- En-suite in all rooms
- Common room



# Purbeck House – Guarantor required

£250 deposit & two weeks rent in advance against the third rental instalment

**£171.32 pw** – 42 weeks (flat)  
**£203.31 pw** – 50 weeks (studio)

- 500 students at this accommodation
- 5-7 bed flats
- En-suite in all rooms
- Common room



# Poole

**30 mins**

Lansdowne Campus by bus

**5 mins**

Poole Town Centre  
Poole Train Station  
Poole Quay  
Shopping Centre  
Supermarkets

**Corfe House**



# Corfe House – Guarantor required

£250 deposit & two weeks rent in advance against the third rental instalment

**£163.29 - £172.76 pw** – 42 weeks (flat)  
**£171.64 pw** – 50 weeks (flat) (NHS courses)

- 308 students at this accommodation
- 5 or 6 bed flats
- En-suite in all rooms
- Common room



# Talbot Campus

**15 mins**

Lansdowne Campus by bus  
or bike

**20 mins**

From the Town Centre  
Local supermarkets

**2 mins**

Lecture theatres &  
seminar rooms  
Open Access Centre  
On-campus facilities

**Student Village**

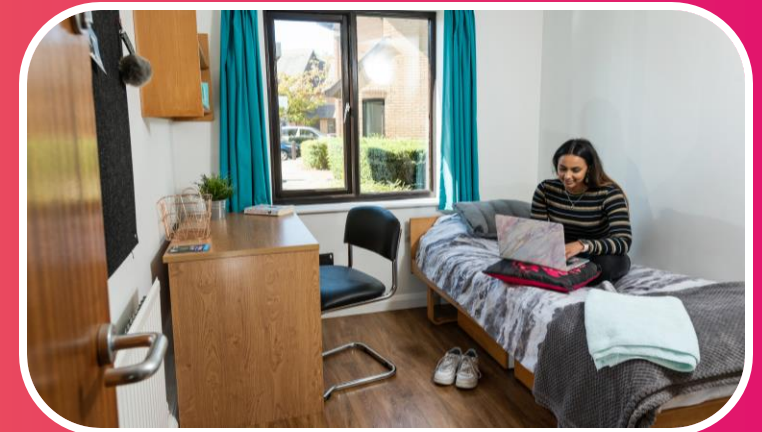


# Student Village

£250 rental instalment 1

**£148.65 - £163.66 pw** – 40 weeks (room)  
**£148.27 - £163.29 pw** – 42 weeks (room)  
(Paramedic Science)

- 278 students at this accommodation
- 3 - 7 bed houses
- Shared facilities
- Live on campus



# Unilet shared houses

£250 rental instalment 1

**£146.56 - £159.00 pw** – 40 weeks (room)

- 4-9 bed houses
- Shared facilities
- 4 miles from Talbot/Lansdowne Campus
- 24/7 support from Residential Services
- Parking may be available (roadside/driveway)



# ResLifeBU



Exclusive for those living in BU  
and its partner's  
accommodation



Transition and settling-in



Supporting wellbeing



Community events and  
activities



Living skills – how to shop on a  
budget



Make new friends





# What students think

## Rebecca, BSc (Hons) Adult Nursing

*“ResLifeBU has held plenty of events to interest people, from games nights to the visiting dogs, I’ve enjoyed attending. I’ve managed to connect with different people and met people who are even on the same course as me!”*

## Jessica, BSc (Hons) Forensic Investigation

*“ResLifeBU allowed me to get closer to my flatmates, make new friends and also do a variety of activities cheaper than they usually are and sometimes even free which is great for my student budget!!!! :)”*

**ResLifeBU**

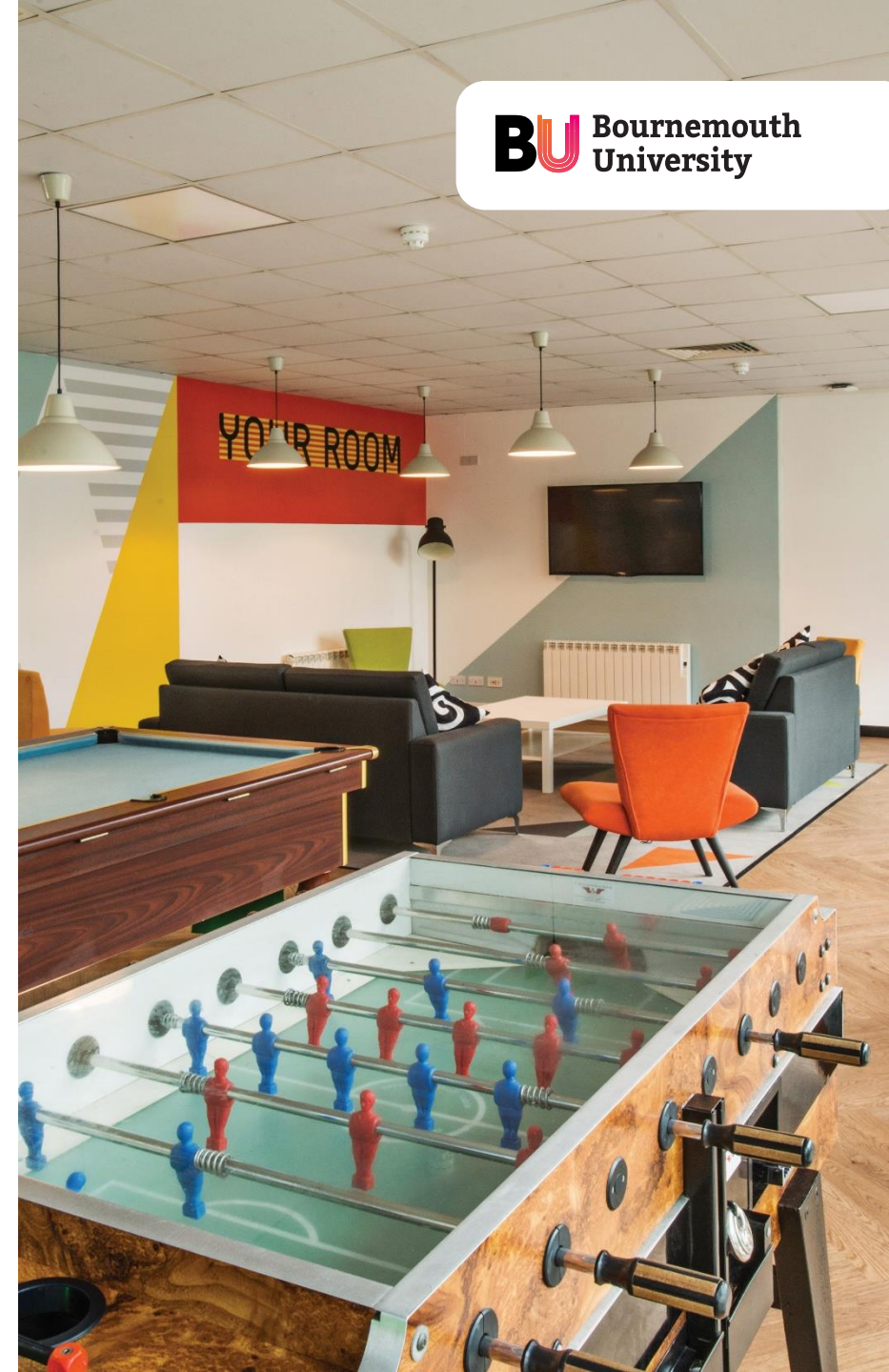
# Booking process: Stage 1

- Can do when C/F (Conditional Firm) status
- Look out for an email from us
- Register your interest and let us know you want a room



# Booking process: Stage 2 (UF)

- UF (Unconditional Firm) – From **25 March** can choose and book a room
- Fair % of rooms from across the portfolio to choose from
- Nothing more to do



# Booking process: Stage 2 (CF)

- CF (Conditional Firm) – From **29 and 30 April** can choose and reserve a room
- A fair % of rooms from across the portfolio to choose from
- Once UF (August) then go on to book (no penalty if not)
- Look out for an email from us



# Booking process: Log in to the Portal

- You will need your BU Student Login, which comprises a username and password, which was sent when you first applied to BU
- Don't have it? Don't worry!
- Search your email folders for an email from BU Account Notification or with the subject title Your BU Student Account (remember to check your junk and deleted items)
- If you cannot locate your email then you should contact our AskBU Team on +44 (0)1202 969696, Monday-Friday, 09:00 to 17:00 (16:30 on Friday)

BU Accommodation Portal

Welcome to the Bournemouth University Accommodation Portal

[Click here to log onto the Accommodation Portal](#)

Additional Information

1. Medical - Please read the following statements carefully and select the one which applies to you.

If you select A or B from the drop-down below you will be able to continue and complete your registration. When eligible you will be contacted and be able to book your room. If you select C your registration will be held and your accommodation requirements will be reviewed along with relevant information from your ALC (Medical Information form).

2. Family, Partner or Dependents

Do you have a family, partner or dependents who require accommodation with you?

If you select yes this will hold your registration and we will contact you with further information.

Criminal Conviction

<https://accommodationportal.bournemouth.ac.uk/StarRezPortalX/0484197C/1/1/Home-Home>

# Booking process: The Portal (Stage 2)

- Chance to let potential flat mates know a bit about you
- Screen name and brief description, e.g. what you like to do with your free-time or the course of study you have applied for (keep it clean!)



# Booking process: The Portal (Stage 2)

- Choosing your accommodation
- Filter by location and room type preference
- If no rooms available at that time, it means that location is full (can check back)
- Click on “Show Flat Occupants” to see who is already living there.

Use the filters to see available rooms in your preferred locations or room types.

If there are no rooms showing then there aren't any rooms available and you need to change your preferences.


Term: New Undergrad start Sept 23

**Locations**

- ☐ 17a Christchurch Road
- ☐ Bailey Point
- ☐ Chasill House
- ☐ Corfe House
- ☐ Cranborne House
- ☐ Dorchester House
- ☐ Lansdowne Point

**Room Types & Attributes**

- ☐ - NHS Course
- ☐ - Over 22
- ☐ - Paramedic
- ☐ - Single Sex
- ☐ Deluxe Ensuite
- ☐ Premium Ensuite
- ☐ Premium Studio




17a Christchurch Silver 1.01E

0 items

17a Christchurch Floor 01, Floor 1, 17a Christchurch Road First Floor ensuite room in 8 bedroom flat with shared kitchen

[Show Flat Occupants](#)

SELECT




17a Christchurch Silver 1.01F

0 items

17a Christchurch Floor 01, Floor 1, 17a Christchurch Road First Floor ensuite room in 8 bedroom flat with shared kitchen

[Show Flat Occupants](#)

SELECT




17a Christchurch Silver 1.01G

0 items

17a Christchurch Floor 01, Floor 1, 17a Christchurch Road First Floor ensuite room in 8 bedroom flat with shared kitchen

[Show Flat Occupants](#)


SELECT



17a Christchurch Silver 1.01H

0 items


17a Christchurch Floor 01, Floor 1,



Bailey Point Ensuite 012.4

1 item

Bailey Point Floor 02, Flat 012,



Bailey Point Ensuite 012.5

1 item

Bailey Point Floor 02, Flat 012,

# Included in the rent

- ResLifeBU programme
- 12-month unlimited BU bus pass\*
  - Covers all university travel
  - Includes some local buses too
- Internet usage\*\*
- Bills (gas, electric, water, sewerage)
- Personal contents insurance

\*Providing unlimited travel on selected services. You can opt out of this feature, reducing rental payment by £308 (2025 entry figure).

\*\*Additional services/premium packages are available in some halls.



# Getting moved in

So, you're moving away from home - maybe for the first time?

Prepare

Get things covered

Space saver

**Learn more on our website:**

[www.bournemouth.ac.uk/accommodation](http://www.bournemouth.ac.uk/accommodation)



# Contact us



## Things to remember

### Once C/F

- Complete Stage 1

### From 25 March

- U/F applicants choose and book their rooms

### From 29 and 30 April

- C/F applicants choose and reserve their rooms

### Options and prices

- [www.bournemouth.ac.uk/accommodation](http://www.bournemouth.ac.uk/accommodation)

📞 01202 961916

✉ [futurestudents@bournemouth.ac.uk](mailto:futurestudents@bournemouth.ac.uk)

The university has consulted the latest available information in the production of this presentation for delivery in **Spring 2025**. Full details, including booking and residential terms & conditions can be found at:  
**[www.bournemouth.ac.uk/accommodation](http://www.bournemouth.ac.uk/accommodation)**.

# Your exclusive Unibuddy Community

If you're an offer holder,  
you'll be invited to join BU's  
Official Unibuddy  
Community

- Connect with other applicants and get chatting
- Ask each other questions
- Seek reassurance for anything you're worried about

