



**Bournemouth
University**



The best start.
Fees & funding for first year undergraduates

#BUOpenDay #BelongAtBU

Please note: The figures shown are for
2023 entry.

What we'll talk about

Fees & financial support

- Tuition Fee Loan
- Maintenance Loan
- NHS Learning Support Fund



BU support: scholarships & bursaries

- BU Maintenance bursary up to £2,400 (up to £3,200 if studying Foundation Year)
- BU Care Leavers bursary up to £9,000 (up to £12,000 if studying Foundation Year)
- Sports Scholarship – up to £5,000
- Music Scholarship – worth up to £600



Where to start



GOV.UK

www.gov.uk/student-finance

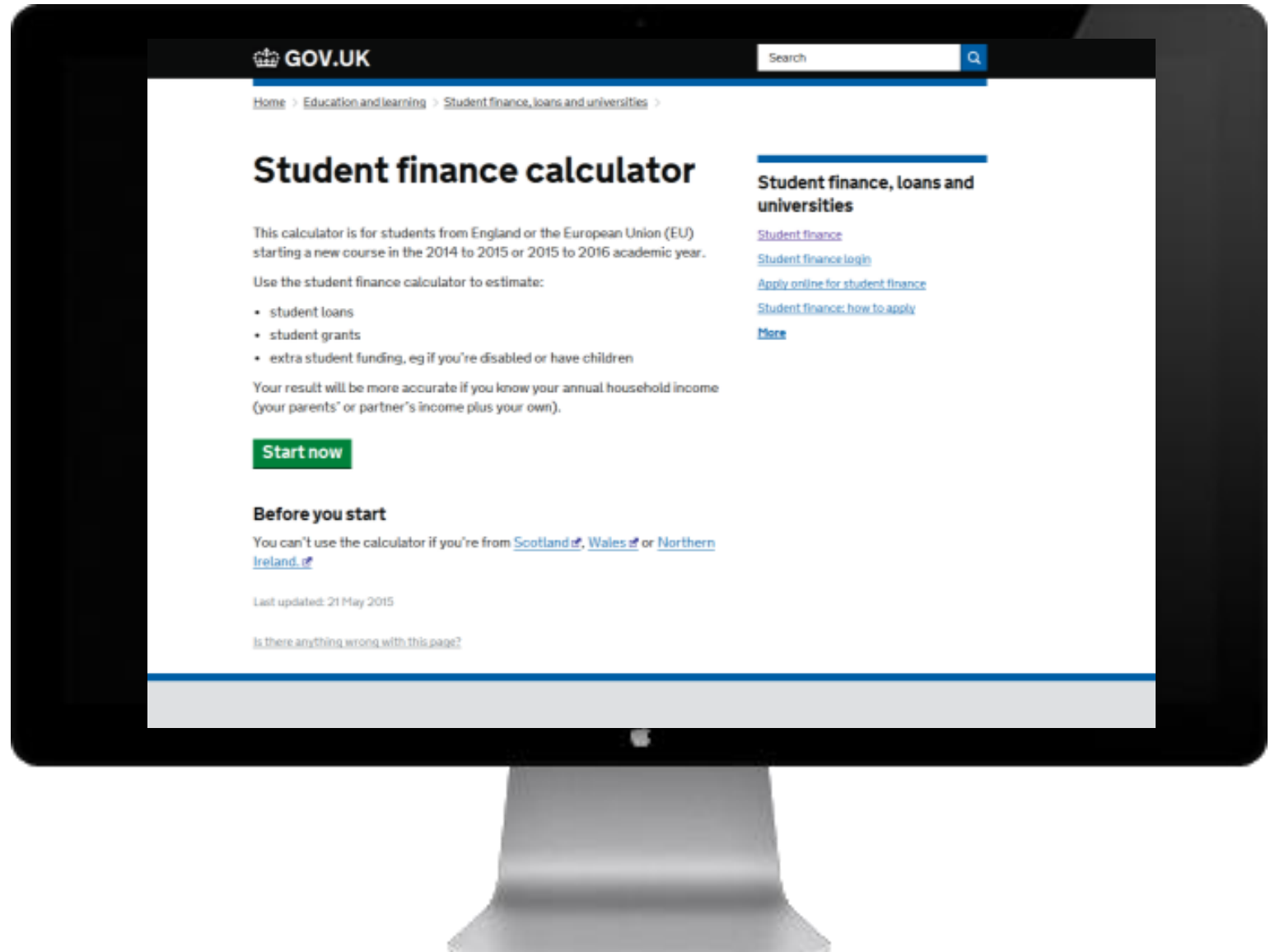
- **Student finance calculator**
- **Information & guidance**
- **Student finance application**

What you'll need:

- ✓ Details of household income
- ✓ UK passport number (enter online) or other identity documents (may need to be sent)

SAAS
Funding your future

student finance **wales**
cyllid myfyrwyr **cymru**



The cost of study

£9,250
per year, Honours
degree courses

- **Tuition Fee Loan** to cover full amount
- Students do not start repayment until income is **over £25,000*** a year, **£2,083** a month, **£480** a week
- Fees will not change for duration of course
- You can pay the university directly in a single lump sum or two instalments

10%

Student family discount for each year of study
If an immediate family member studies at BU or is a graduate of BU.

The cost of living: Maintenance Loan

46-week courses

Up to

£12,332

living away from home,
not in London

- Maintenance Loans are for day-to-day costs – typically accommodation, travel, domestic bills etc
- Paid in three instalments (**one** each term).



45%

Non-income assessed



Up to 55%

Income assessed

Up to

£9,962

living at home

Up to

£16,058

Living away from
home, in London

This information is provided in good faith using the latest information available from Student Loans Company. The Maintenance Loan amounts shown are for 2023/24 entry. For the latest information, visit www.gov.uk/student-finance

The cost of living: Maintenance Loan

Standard duration: Sports Therapy, Nutrition, Sociology degrees, Criminology

Up to
£9,978
living away from
home, not in London

- Maintenance Loans are for day-to-day costs – typically accommodation, travel, domestic bills etc
- Paid in three instalments (one each term).



45%

Non-income assessed



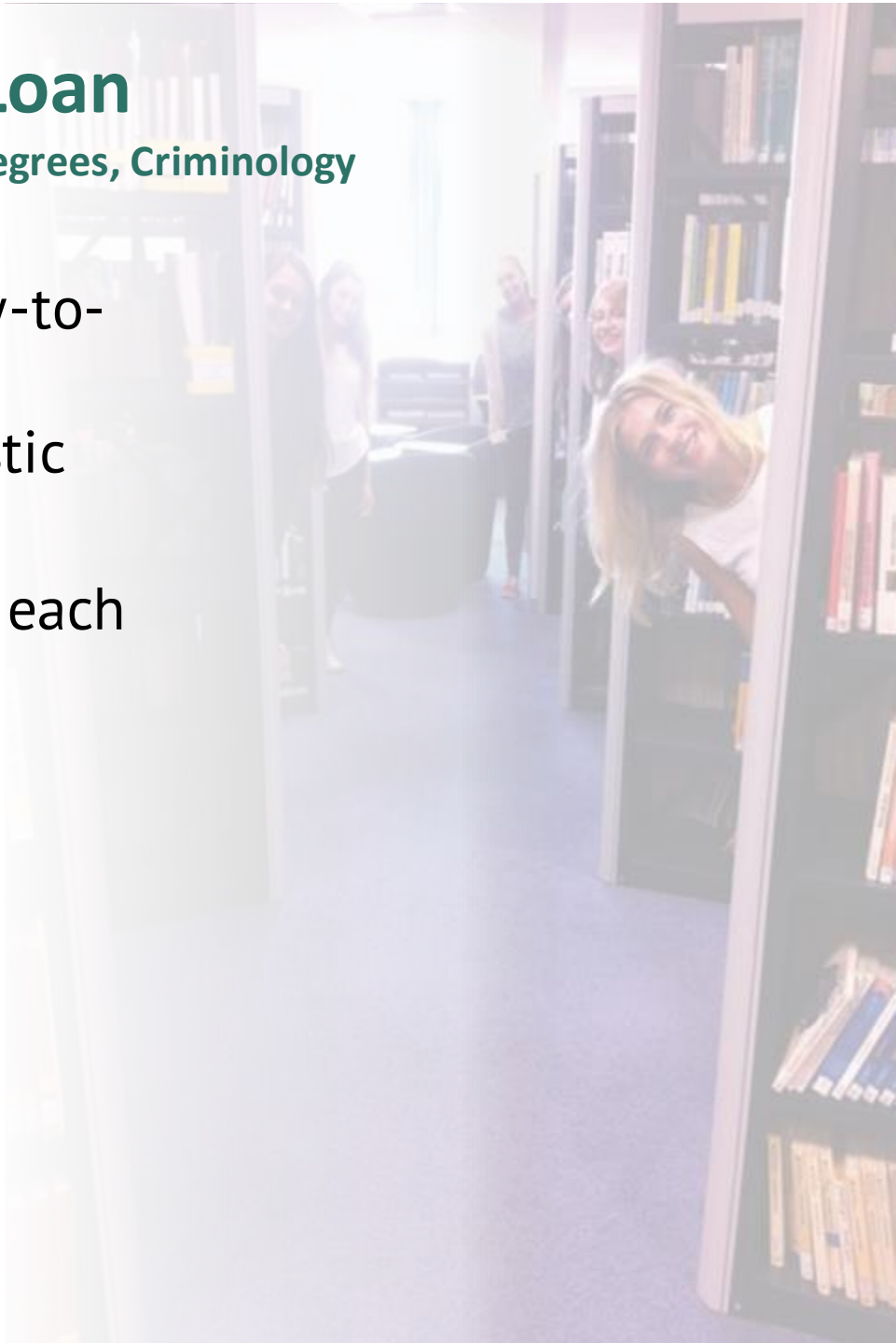
Up to 55%

Income assessed

Up to
£8,400
living at home

Up to
£13,022
Living away from
home, in London

This information is provided in good faith using the latest information available from Student Loans Company. The Maintenance Loan amounts shown are for 2023/24 entry. For the latest information, visit www.gov.uk/student-finance



The cost – if you take a placement year

Sports Therapy, Nutrition, Sociology degrees, Criminology

£1,850

(2023 entry)
Placement year
tuition fee

**Maintenance Loans are available
whilst you are on a paid or unpaid
placement and are non-means tested.**

£2,267

Living at home

£3,022

Placement elsewhere in
UK or abroad

£4,244

Placement in London



Paying it back

- You will start repaying your **combined loan amount automatically** (by HMRC) in the **April following graduation** or leaving the course, only **when you earn over the threshold**.
- If any amount remains after **40 years**, it is written off.

Interest accrues on the loan
from the moment you take it
out.

Likely to be

RPI

9%

Of your income above
£25,000 (before tax)

for **40** years (max.)

Yearly income before tax	Income from which 9% will be deducted	Approximate monthly repayment
£25,000	£0	£0
£28,000	£3,000	£22
£29,500	£4,500	£33
£31,000	£6,000	£45
£33,000	£8,000	£60

Amounts shown are correct at time of delivery.

Additional support from the Government

Non-repayable
additional
support

- **Childcare grant:**

- Children under the age of 15, or under 17 if they have special educational needs
- Up to £188.90 a week for 1 child, up to £323.85 a week for 2 children or more
- 85% of your childcare costs, or a fixed amount (whichever is less)

- **Parents' Learning Allowance:**

- Up to £1,915 a year to support learning costs (doesn't affect benefits or tax credits)
- Paid in three instalments, one at the start of each term

Apply as part of
your student
finance
application

Visit www.gov.uk/student-finance/extra-help for more information

Additional support from the Government

Non-repayable
additional
support

- **Adult Dependants' Grant:**

- If you have an adult who depends on you financially you could be eligible for up to £3,354 a year
- This grant will affect any income-related benefits and tax credits you might get
- Paid in three instalments, one at the start of each term

- **Disabled Students' Allowance:**

- Up to £26,291 a year based on your individual needs, not household income
- Needs assessment will determine what you are eligible for and how this will be paid

Apply as part of
your student
finance
application

Additional support from the Government

Non-repayable
additional
support

- **Universal credit:**

- Studying full-time
- You do not have parental support and are **not** under local authority care
- Have limited capability for work and are you're entitled to Personal independence Payment (PIP) or Disability Allowance (DLA)
- You're responsible for a child
- You're in a couple with responsibility for a child and your partner is eligible for Universal Credit
- Paid monthly

Apply online:
www.gov.uk

Visit www.gov.uk/student-finance/extra-help for more information

NHS Learning Support Fund

Up to
£8,000
per annum



£5,000

All students studying on eligible courses



£1,000

Specialist disciplines



£2,000

Additional childcare allowance

Eligible courses:

Midwifery, Nursing, Occupational Therapy, Operating Department Practice, Paramedic Science and Physiotherapy

- This funding does not need to be repaid
- Register for an online account via the **NHS Learning Support Fund application system** found on the NHS website
- You must apply within six-months of starting study
- Paid in three instalments– intermittent with termly student loan payments
- You will need to reapply each year

NHS Funding: Travel and Dual Accommodation Expenses

- You can claim via your NHS Learning Support Fund account
- Claims must be made within six months of the cost being incurred
- Payment usually arranged within 20 working days of receiving the form

Travel

If it costs you more to travel from your term time address to your practice placement site than it does from your term time address to university/normal place of study, you can claim the difference per day

Placement accommodation

You may be able to claim for the cost of temporary (secondary) accommodation for the purposes of attending a compulsory practice placement. Commercial up to £55 per night, non-commercial up to £25 per night

NHS Funding: Exceptional Support Fund (ESF)

- This is a means tested grant for students who experience unforeseen financial hardship
- Apply using the ESF claim form via your **NHS Learning Support Fund account**
- You can apply multiple times in one year (if you haven't already received the maximum amount)
- You can apply in any year of your studies, even if you have received funding previously
- If your application is successful, payments are usually made in a lump sum within 15 days

*Exceptional
support fund
Up to £3,000 per
year*

NHS Funding: BA (Hons) Social work

Up to
£4,862
per annum

✓ **£4,000**

Social work bursary

+ **£862**

Placement Travel Allowance

- This funding does not need to be repaid
- Students in their second and third year of study are eligible
- The number of bursaries are capped, so there is no guarantee
- You will need to apply via the **MyFunding** system at www.nhsbsa.nhs.uk
- If you're not eligible for the full bursary, you may still be awarded the placement travel allowance
- Paid in three instalments– one each term
- You will need to reapply each year

Bursaries & Scholarships from BU

- ✓ This support is **directly from BU** – it's additional to your student loan
- ✓ BU should be your **firm choice** to be considered for any of this funding
- ✓ They're **non-repayable**

BU Maintenance Bursary

Up to **£2,400***

Over 3 years of study
For 'Home' fee status
applicants living in England with
a household income up to
£16,000

BU Care Leavers Bursary

Up to **£9,000***

Over 3 years of study
(£3,000 each year)
For 'Home' fee status
applicants living in England
who have been in care of the
Local Authority for a period of
3 months or more, with a
household income up to
£16,000

*Up to £3,200 for those studying
a Foundation Year

**Up to £12,000 for those
studying a Foundation Year

Terms, conditions & exclusions apply.
See www.bournemouth.ac.uk/bursaries



BU Sport Scholarship

Up to **£5,000**

Supporting elite athletes
representing their sport at a
national or junior level

Terms & conditions apply
See www.bournemouth.ac.uk/ug-scholarships

BU Music Scholarship Benefits package worth

approximately **£600**

per year

Supporting outstanding musicians
and singers who raise the profile
of BU's performance-based output



**Bournemouth
University**



Things to remember

2023 entry

- Check out your accommodation options
- Apply for student funding and explore Scholarships and Bursaries

September

- Get ready to start uni!

2024 entry

From March

Apply for your accommodation when your place is Unconditional Firm

May

- Student funding applications must be submitted by 31 May and explore Scholarships & Bursaries
- Make your university choice

September

- Get ready to start uni!

The university has consulted the latest available information in the production of this presentation for delivery in **Summer 2023** but cannot be held liable for its accuracy. You should take advice based on your personal circumstances before entering into any financial commitment. If you are joining us from Wales, Scotland or Northern Ireland, please see the relevant funding bodies for details of Maintenance support. The latest information can be found at:

www.gov.uk/studentfinance www.bournemouth.ac.uk/ug-funding

Contact

BU: 01202 961916

futurestudents@bournemouth.ac.uk

Student Finance England: 0300 100 0607



Bournemouth
University



Please note:

The accommodation prices quoted in this presentation are for the 2023/24 academic year. For the latest information, please refer to the BU website.

Your home from home.
Accommodation for first year undergraduate students

#BUOpenDay
#BelongAtBU

Your home from home

- You may choose to live in hospital accommodation at your placement location, as you will experience the full 24-hour shift pattern, including weekend and night shifts.
- If you are studying some of our Healthcare courses, you will require accommodation with a 50-week tenancy. We have specific options available, although shorter (40-42 weeks options) could be selected and you opt for an additional Summer let.

You have three main options

- **Hospital accommodation** (arranged direct)
- **Halls of Residence** (booked through BU)
- **Shared houses** (booked through BU/LettingsBU)
- You may not be informed of your placement location until Summer, but Hospital accommodation can be simple & easy to arrange



Hospital accommodation

Hospital accommodation and contact details are on our website:

www.bournemouth.ac.uk/accommodation-hss

Hospital accommodation can be for all three years of study

Dorset County Hospital NHS Foundation Trust (Albany Court)

Find out about the accommodation available if your placement location is the Dorset County Hospital NHS Foundation Trust.

Musgrove Park Hospital

Read about the accommodation available at Musgrove Park Hospital and find out how to apply for a room if this is your placement location.

Royal Hampshire County Hospital

Find out about the accommodation available if you will be completing your placements at Royal Hampshire County Hospital.

St Mary's Hospital Newport

Read about the accommodation available if you are completing your placements at St Mary's Hospital Newport.

Hampshire Hospitals NHS Foundation Trust

Read about the hospital accommodation available if you are on placement with the Hampshire Hospitals NHS Foundation Trust.

Poole Hospital NHS Foundation Trust

Discover where you could live if you are based at Poole Hospital NHS Foundation Trust for your placements.

Salisbury Hospital NHS Foundation Trust

Learn about the available accommodation if you are completing your placements at Salisbury Hospital NHS Foundation Trust.

Yeovil District Hospital

Learn about the available accommodation if you are going to be completing your placements at Yeovil District Hospital.



Options for healthcare students



<https://www.youtube.com/watch?v=nXxMBSSlrCY>

It's going to be great...

- A wide variety of accommodation options, both on and off-campus and in halls of residence or BU managed housing
- Good transport links to the university campuses from all sites
- Cycle storage
- Internet connection
- Laundry facilities



Bournemouth & Poole



Bournemouth and the surrounding area



Lansdowne Campus

15 mins

Talbot Campus by bus or bike

10 mins

Town centre

The beach

Bournemouth Gardens

5 mins

Bournemouth Rail/Bus station

Supermarkets and grocers

Between all halls blocks

The Old Fire Station

- Bailey Point
- Chesil House
- Cranborne House
- Dorchester House
- Lansdowne Point
- Lyme Regis House
- Purbeck House



Bailey Point – Guarantor required

£250 deposit & two weeks rent in advance against the third rental instalment

£183.84 - £190.45 pw - 42 weeks (flat)

£214.72 pw - 50 weeks (standard studio)

£225.75 pw - 50 weeks (premium studio)

550 students at this accommodation

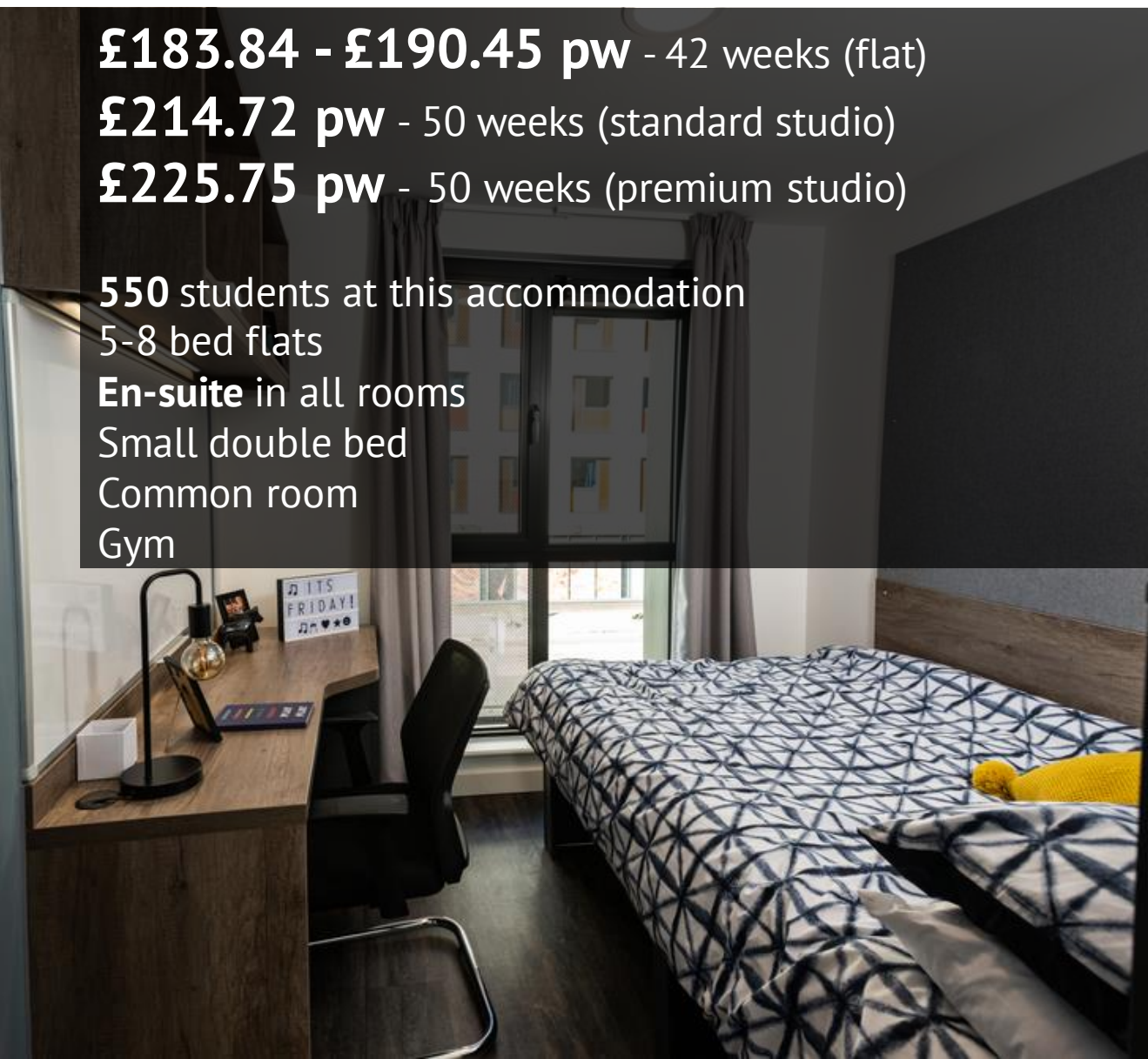
5-8 bed flats

En-suite in all rooms

Small double bed

Common room

Gym



Chesil House – Guarantor required

£250 deposit & two weeks rent in advance against the third rental instalment

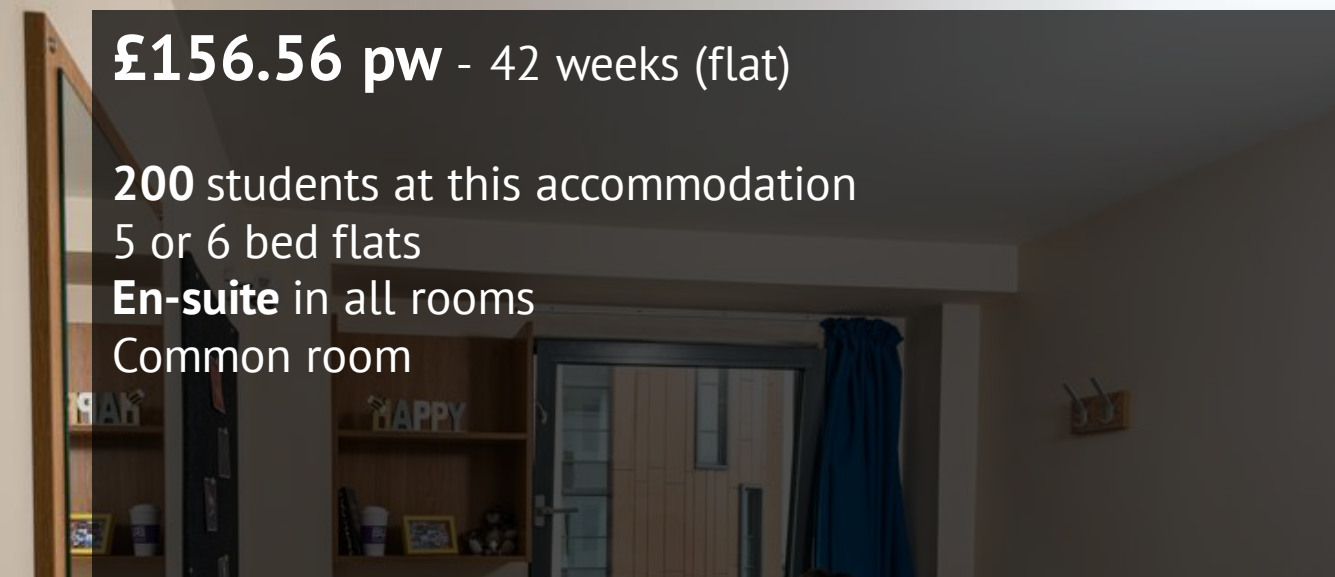
£156.56 pw - 42 weeks (flat)

200 students at this accommodation

5 or 6 bed flats

En-suite in all rooms

Common room



Cranborne House – Guarantor required

£250 deposit & two weeks rent in advance against the third rental instalment

£145.98 - £164.31 pw - 42 weeks (flat)
£145.39 - £163.72 pw - 46 weeks* (flat)
£144.89 - £172.44 pw - 50 weeks (flat/studio)

500 students at this accommodation
6 or 7 bed flats
En-suite in all rooms
Common room

*Paramedic Science



Dorchester House

£250 First Rental Instalment

£169.70 - £179.97 pw - 42 weeks (flat)

£202.95 - £211.63 pw - 50 weeks (studio)

590 students at this accommodation

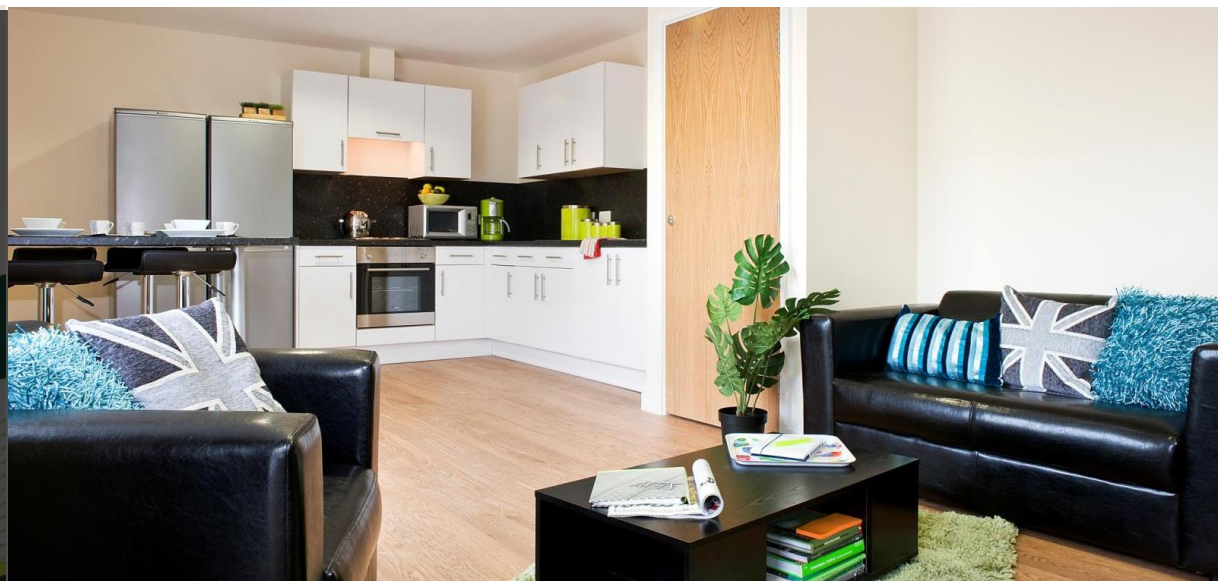
3-7 bed flats

En-suite in all rooms

Small double beds in all rooms

Common room

Gym



Lansdowne Point

£250 First Rental Instalment

£188.54 pw - 42 weeks (classic en-suite)

£193.54 pw - 42 weeks (deluxe en-suite)

£216.45 pw - 50 weeks (studio)

257 students at this accommodation
5-6 bed flats

En-suite in all rooms



Lyme Regis House – Guarantor required

£250 deposit & two weeks rent in advance against the third rental instalment

£165.89 pw - 41 weeks (flat)

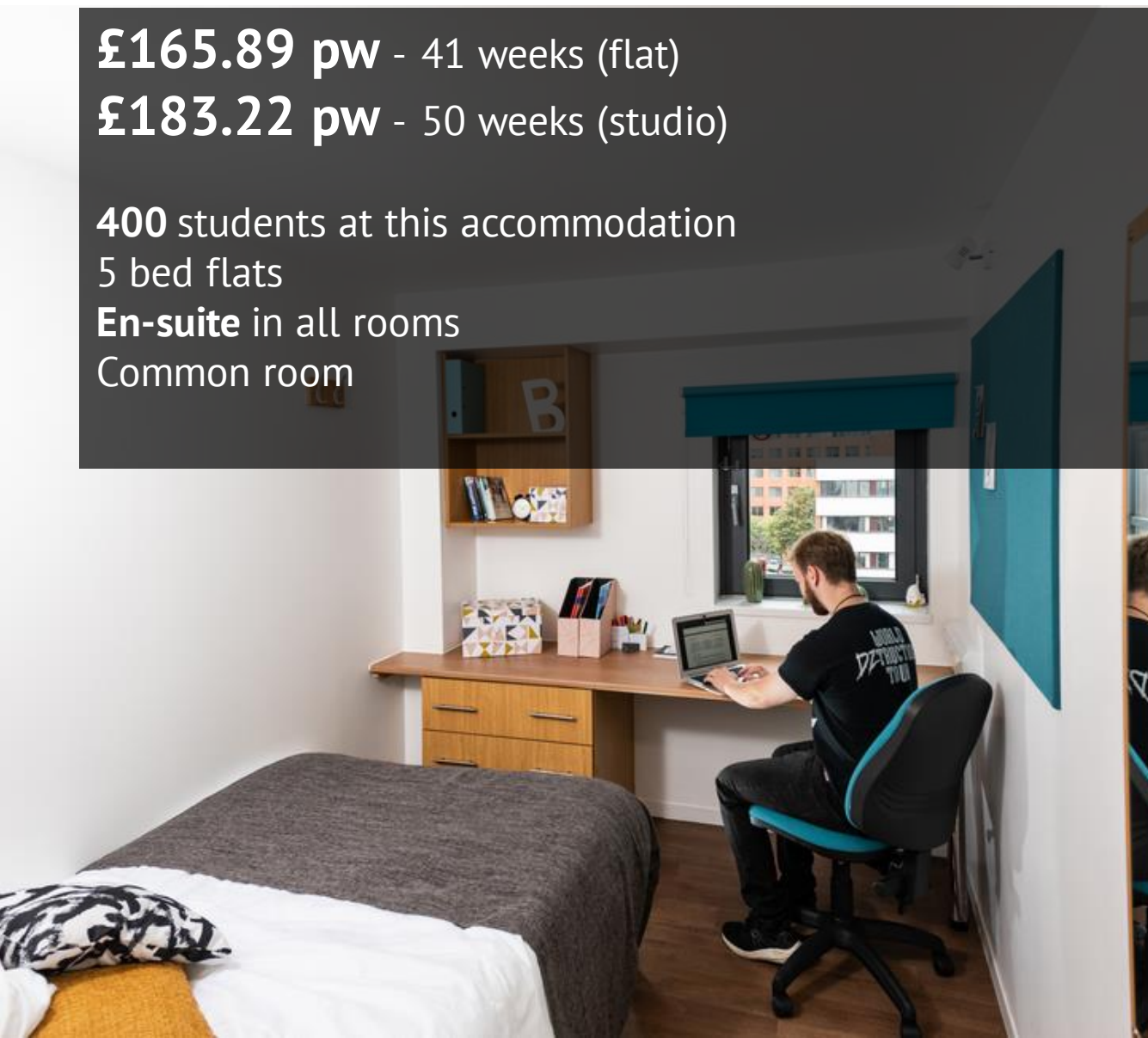
£183.22 pw - 50 weeks (studio)

400 students at this accommodation

5 bed flats

En-suite in all rooms

Common room



Purbeck House – Guarantor required

£250 advance rent payment, deducted from the first rent payment

£157.89 pw - 42 weeks (flat)

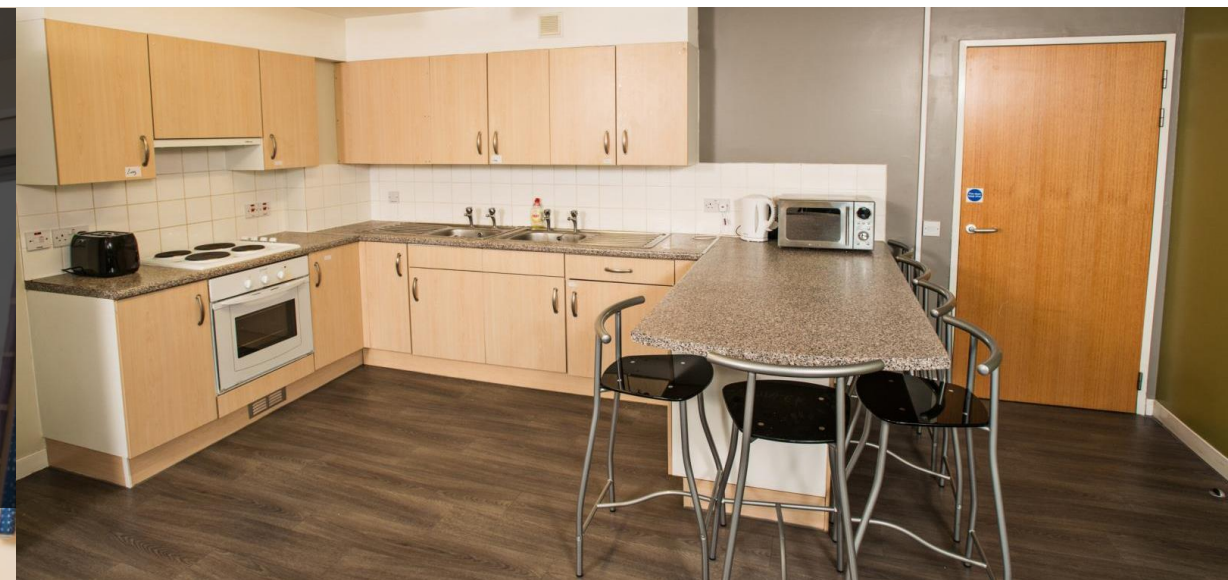
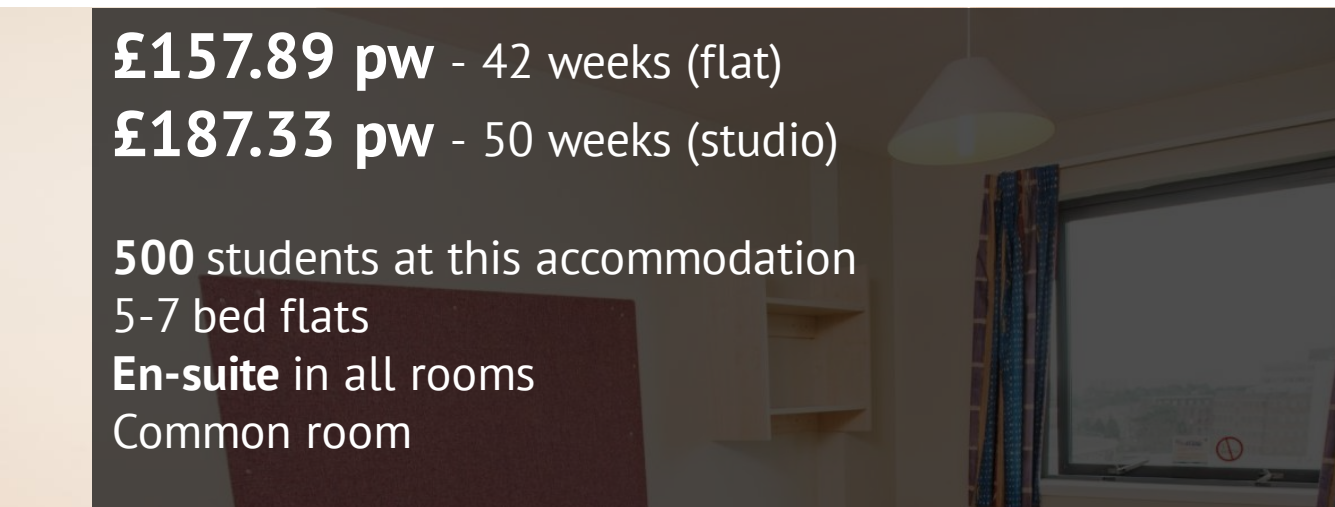
£187.33 pw - 50 weeks (studio)

500 students at this accommodation

5-7 bed flats

En-suite in all rooms

Common room



30 mins

Talbot Campus by bus

5 mins

from the Town Centre
Poole Train Station
Poole Quay
Shopping Centre
Supermarkets

■ Corfe House



Corfe House – Guarantor required

£250 deposit

£155.84 - £164.87 pw - 42 weeks (flat)

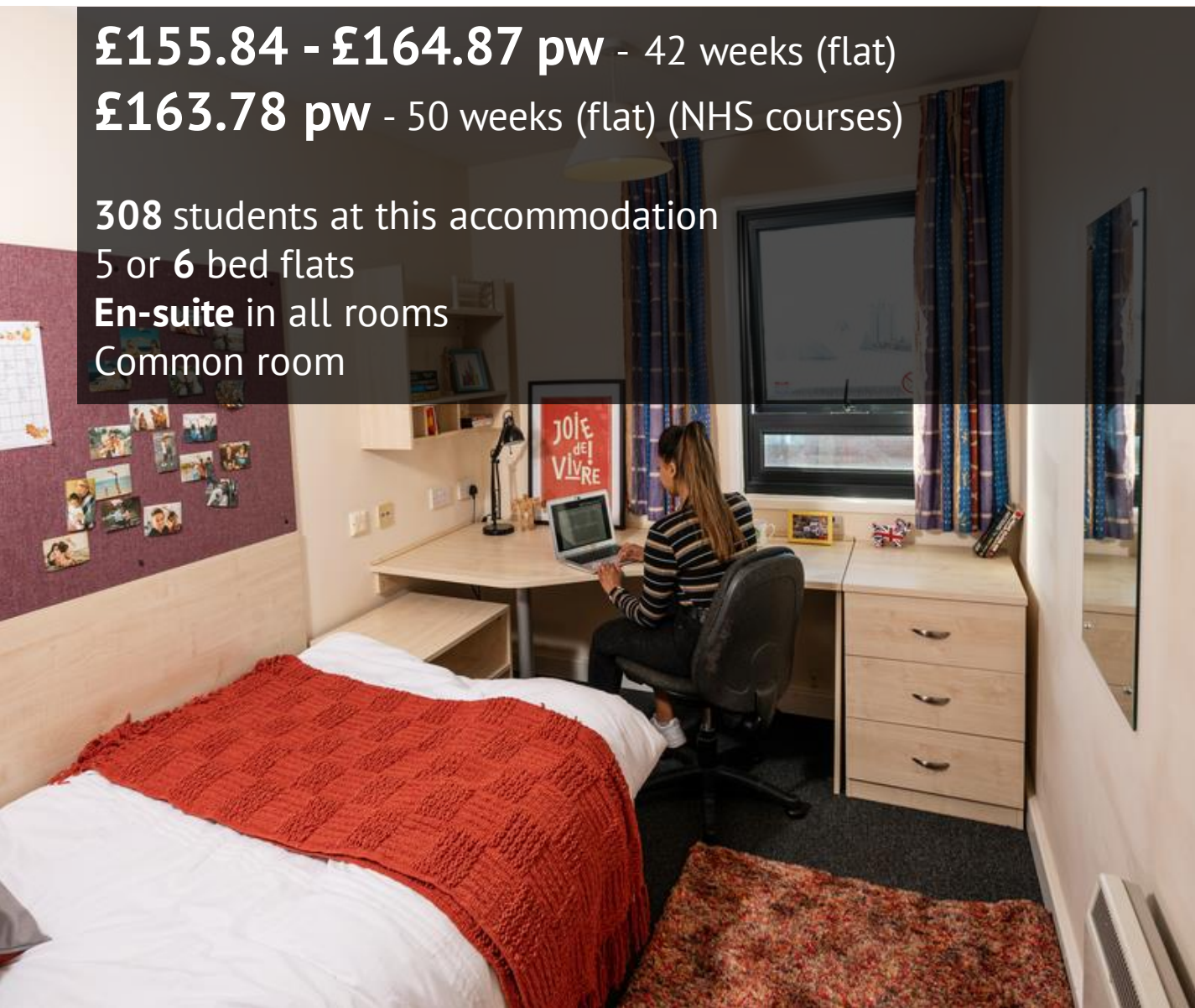
£163.78 pw - 50 weeks (flat) (NHS courses)

308 students at this accommodation

5 or 6 bed flats

En-suite in all rooms

Common room



15 mins

Lansdowne Campus by
bus or bike

20 mins

from the Town Centre
Local supermarkets

2 mins

Lecture theatres & seminar
rooms

Open Access Centre

On-campus facilities

▪ Student Village



£136.84 - £150.64 pw - 40 weeks (room)

£136.50 - £150.30 pw - 42 weeks (room) (Archaeology)

£135.91 - £149.71 pw - 46 weeks (room) (Paramedic Science)

£192.24 pw - 50 weeks (studio)

278 students at this accommodation

3-7 bed houses

Shared facilities

Live on campus



Unilet shared houses

£250 First Rental Instalment

£127.51 - £147.43 pw - 41 weeks (room)

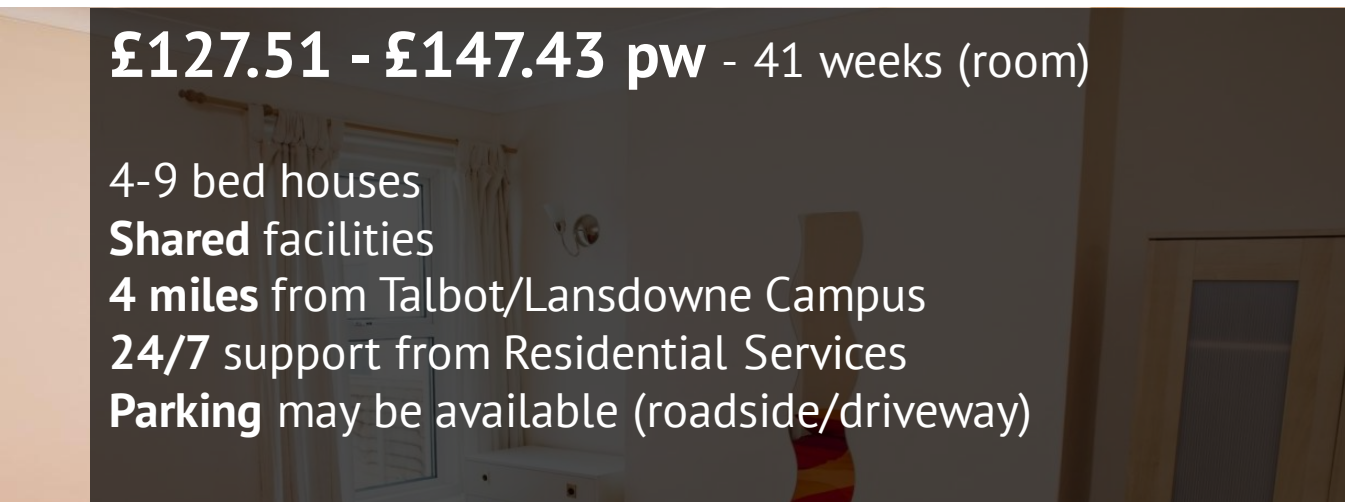
4-9 bed houses

Shared facilities

4 miles from Talbot/Lansdowne Campus

24/7 support from Residential Services

Parking may be available (roadside/driveway)



- Exclusive for those living in the BU accommodation portfolio
- Works around three core principles: **Social**, **Wellbeing** and **Skills**





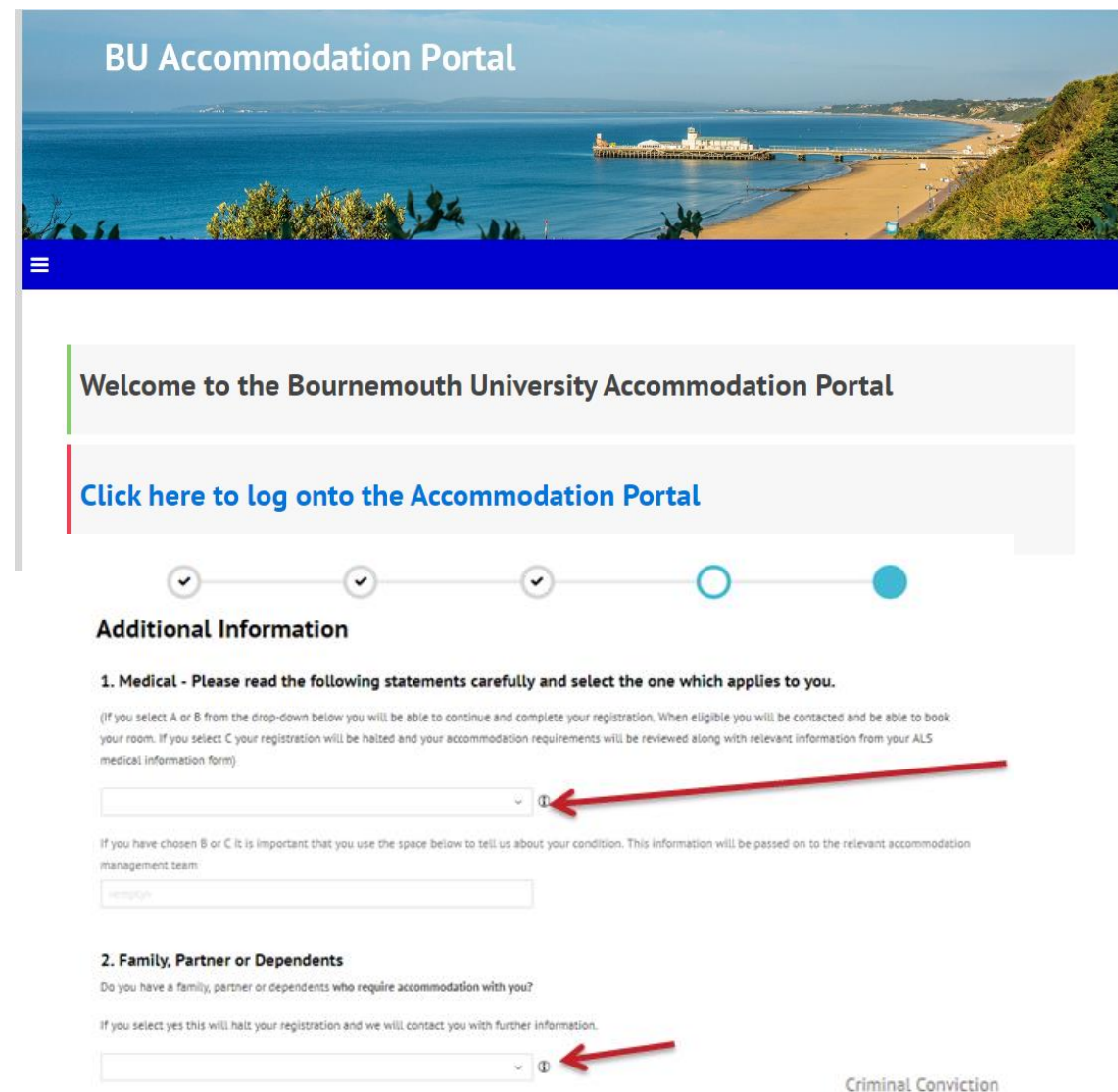
Booking accommodation

- Book accommodation through the BU Accommodation Portal
- Go to the BU website for more details:
www.bournemouth.ac.uk/accommodation
- Accommodation guarantee



Stage 1 - Registering your interest in Accommodation

Once you have made BU your Firm choice, we will email you information about Stage 1 (Registering your interest in accommodation)



The screenshot shows the 'BU Accommodation Portal' interface. At the top is a banner image of a coastal scene with a pier. Below the banner is a blue navigation bar with a hamburger menu icon. The main content area has a light gray background and contains the following elements:

- A welcome message: 'Welcome to the Bournemouth University Accommodation Portal'.
- A link: 'Click here to log onto the Accommodation Portal'.
- A progress indicator with five circles. The first three are gray with checkmarks, the fourth is blue with a white circle, and the fifth is solid blue.
- A section titled 'Additional Information'.
- A sub-section '1. Medical - Please read the following statements carefully and select the one which applies to you.' with explanatory text and a dropdown menu. A red arrow points to the dropdown.
- A text input field for additional medical information.
- A sub-section '2. Family, Partner or Dependents' with a question and a dropdown menu. A red arrow points to the dropdown.
- A link for 'Criminal Conviction' at the bottom right.

Stage 2 – Booking your accommodation

- Use these filters to narrow searches, you will only see rooms available

If you want Single Sex it is in the Attributes filter

- Click to see others who have already booked

Stage 2 - Personal Profile Room Selection Booking Summary Contract Deposit Payment Page RealEx Lightbox Receipt

✓ ○ ● ● ● ● ● ●

Welcome to the Room Selection Page

Please use the filters below to look for available rooms in all of our accommodation.
Please note that the vast majority of our flats are mixed gender and the rooms have been labelled, therefore you will only see rooms available to your gender.
If you want Single Sex accommodation then you can use the filter to only see those rooms.

Staying between 21/09/2019 and 11/07/2020 for Term: New Student starting Sept 2019 (40-42wk)

Room Types

- ☐ Premium Ensuite
- ☐ Premium Room Access
- ☐ Premium Studio
- ☐ Standard Ensuite
- ☐ Standard Non Ensuite
- ☐ Studio
- ☐ Value Ensuite

Locations

- ☐ Bailey Point
- ☐ Chesil House
- ☐ Corfe House
- ☐ Cranborne House
- ☐ Dorchester House
- ☐ Home Park
- ☐ Lansdowne Point

Floors

- ☐ Floor 1
- ☐ Floor 10
- ☐ Floor 11
- ☐ Floor 12
- ☐ Floor 13
- ☐ Floor 2
- ☐ Floor 3

Bailey Point Flat 003-7

1 [Calculate Total](#)

Bailey Point Floor 01, Flat 003, Bailey Point

First Floor ensuite room in 7 bedroom flat with shared kitchen

[Show Flat Occupants](#)

SELECT

Bailey Point Flat 009-7

1 [Calculate Total](#)

Bailey Point Floor 02, Flat 009, Bailey Point

Second Floor ensuite room in 7 bedroom flat with shared kitchen

[Show Flat Occupants](#)

SELECT

Bailey Point Flat 015-7

1 [Calculate Total](#)

Bailey Point Floor 03, Flat 015, Bailey Point

Third Floor ensuite room in 7 bedroom flat with shared kitchen

[Show Flat Occupants](#)

SELECT

Bailey Point Flat 021-7

1 [Calculate Total](#)

Bailey Point Flat 027-7

1 [Calculate Total](#)

Bailey Point Flat 033-7

1 [Calculate Total](#)

Getting moved in

Stage 1 – when BU is your firm choice

Register your interest in accommodation

Stage 2 – Reserve your room

UF – pay and sign to secure your room

CF – wait for results before securing your room

We've got this covered. Your rent includes...

- ✓ **12-month unlimited BU bus pass***
 - ✓ Covers all university travel
 - ✓ Includes some local buses too
- ✓ **Internet usage****
- ✓ **Bills** (gas, electric, water, sewerage)

*Providing unlimited travel on selected services. You can opt-out of this feature, reducing rental payment by £285 (2023 entry figure).

**Additional services/premium packages are available in some halls.

Getting moved in

**So, you're moving away from home
– maybe for the first time?**

- ✓ **Prepare**
- ✓ **Get things covered**
- ✓ **Space saver**

Learn more on our website
www.bournemouth.ac.uk/accommodation





**Bournemouth
University**



Contact us

01202 969696

askbu@bournemouth.ac.uk

The university has consulted the latest available information in the production of this presentation for delivery in **Summer 2023**. Full details, including booking and residential terms & conditions can be found at:
www.bournemouth.ac.uk/accommodation.