



Bournemouth
University

Degrees of *difference*

Welcome to BU

#BUOpenDay

Check yourself in to the Open Day

Let us know you're here by:

- Clicking the button in the email we sent you this morning or
- Asking a member of staff or Student Ambassador to scan the QR code on your ticket.

We're really looking forward to welcoming you to our Undergraduate Open Day **this Saturday** and can't wait to show you around. Here are a few event essentials, including parking arrangements and a link to the programme to help you make the most of your day. You can find all the information [on our website](#) too.

Your main course of interest, MA Marketing Communications, will be represented at our **Talbot Campus** on the day.

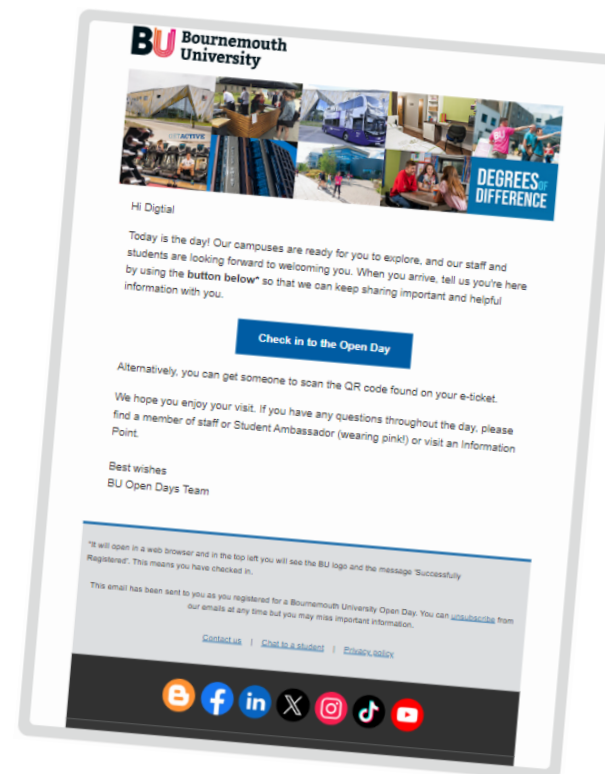
Click the button below to see the schedule for the event. There will also be printed copies available to pick up on the day.

[Download the programme](#)



Your ticket

This is your unique ticket. Look out for an email we'll send you on the day that will enable you to self-check-in. Alternatively, a member of staff or one of our Student Ambassadors (wearing pink) will be happy to scan this QR code when you arrive.



Our story – "To learn is to change"



BU is helping people live better, for longer



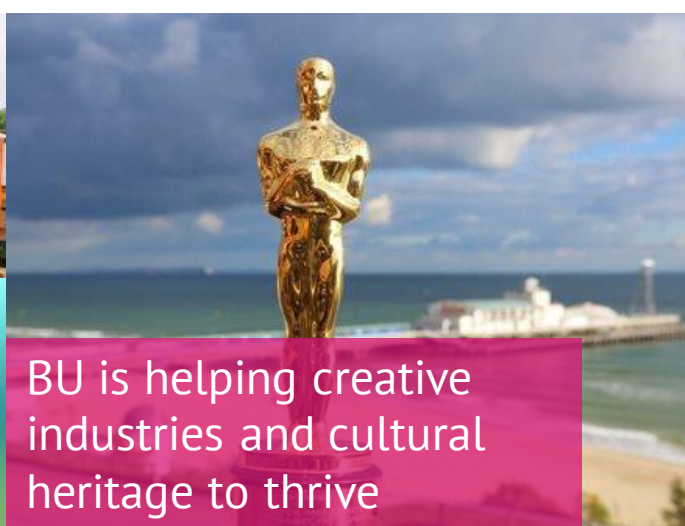
BU helps to prepare for and recover from crisis



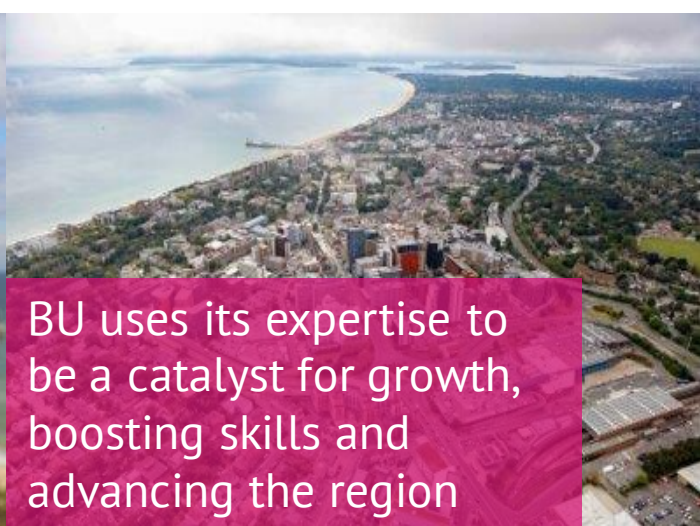
BU challenges marginalisation, misinformation and under-representation



BU helps to protect and preserve a sustainable environment



BU is helping creative industries and cultural heritage to thrive



BU uses its expertise to be a catalyst for growth, boosting skills and advancing the region

Who are we

- Our vision - to be recognised worldwide as a leading university for inspiring learning, advancing knowledge and enriching society through the fusion of education, research and practice
- 18,000 students – 2,500 international students from across the world (130+ countries)
- Across two sites – Talbot Campus & Lansdowne Campus, and partner institutions

5th in the UK



Times Higher Education
Impact Rankings 2023

↑ 17 places in 2024 rankings (55th)



We're ranked in the top 50 in the world and 1st in the UK in the 2023 Times Higher Education (THE) Young University Rankings



**World
University
Rankings**
2023 TOP 300



**Times
Higher
Education**



Kate Adie CBE DL, BU Chancellor

Who are we



We are professionally orientated

- Professional accreditations
- Placements
- Working with industry



We offer incredible learning opportunities

- Live research projects
- Guest lectures
- Study abroad



Our research makes a real difference

- Helping people live better for longer
- Contributing to the creative and cultural industries

94% of our research was rated as internationally-recognised or above
Research Excellence Framework, 2021

Our university

95% of
Midwifery students
employed/in
further study within
15 months
of graduating

Graduate Outcomes Statistics,
2018/19

91.1% of all
BU graduates
employed/in
further study
within 15 months
of graduating

Graduate Outcomes Survey, 2020/21

BU nursing
staff shortlisted for
two Student
Nursing Times awards
(Student Nursing Times,
2021)



Every
undergraduate
student
has the
opportunity
to undertake a
work
placement



Ranked **1st** for Social Work 2021
& 2022 (Guardian League Tables)

More than **1,200** students undertook an
international experience between 2017 and
2019

Campuses to be proud of

See it
for yourself

Visit our Virtual Tour to
see everything in 360°
[www.bmth.ac.uk/
virtual-tour](http://www.bmth.ac.uk/virtual-tour)



**Lansdowne Campus:
Bournemouth Gateway**



Campuses to be proud of

**Bournemouth University
Yeovil Campus**



**Portsmouth Campus:
St. Mary's Community Health Campus**



Support and wellbeing

- AskBU – general support
- Additional Learning Support
- On-site childcare facilities
- Careers advice & MyCareerHub
- Faith & Reflection Service
- Subject librarians & Library experts
- On-site Police team & personal safety events
- Student Wellbeing
- Student Advice (Students' Union)
- ResLifeBU



Your exclusive Unibuddy Community

If you're an offer holder, you'll be invited to join BU's Official Unibuddy Community.

- ❑ Similar to a chat room, your Unibuddy Community will help you connect with other prospective students hopefully joining you in September
- ✓ You will find a list of groups ranging in themes from your chosen course to accommodation, where you can ask each other questions
- ✓ Find out what others are looking forward to and seek reassurance if there is something you are feeling nervous about
- ✓ Your Unibuddy Community is a great place for to you enjoy and get chatting!

Scan the QR code to find out more or download the 'Unibuddy Community' app from the App Store or Google Play



**We've provided the latest information
available at the time of delivery
(Spring 2024).**

For the latest information, visit our
website: www.bournemouth.ac.uk

Contact us

01202 961916

futurestudents@bournemouth.ac.uk





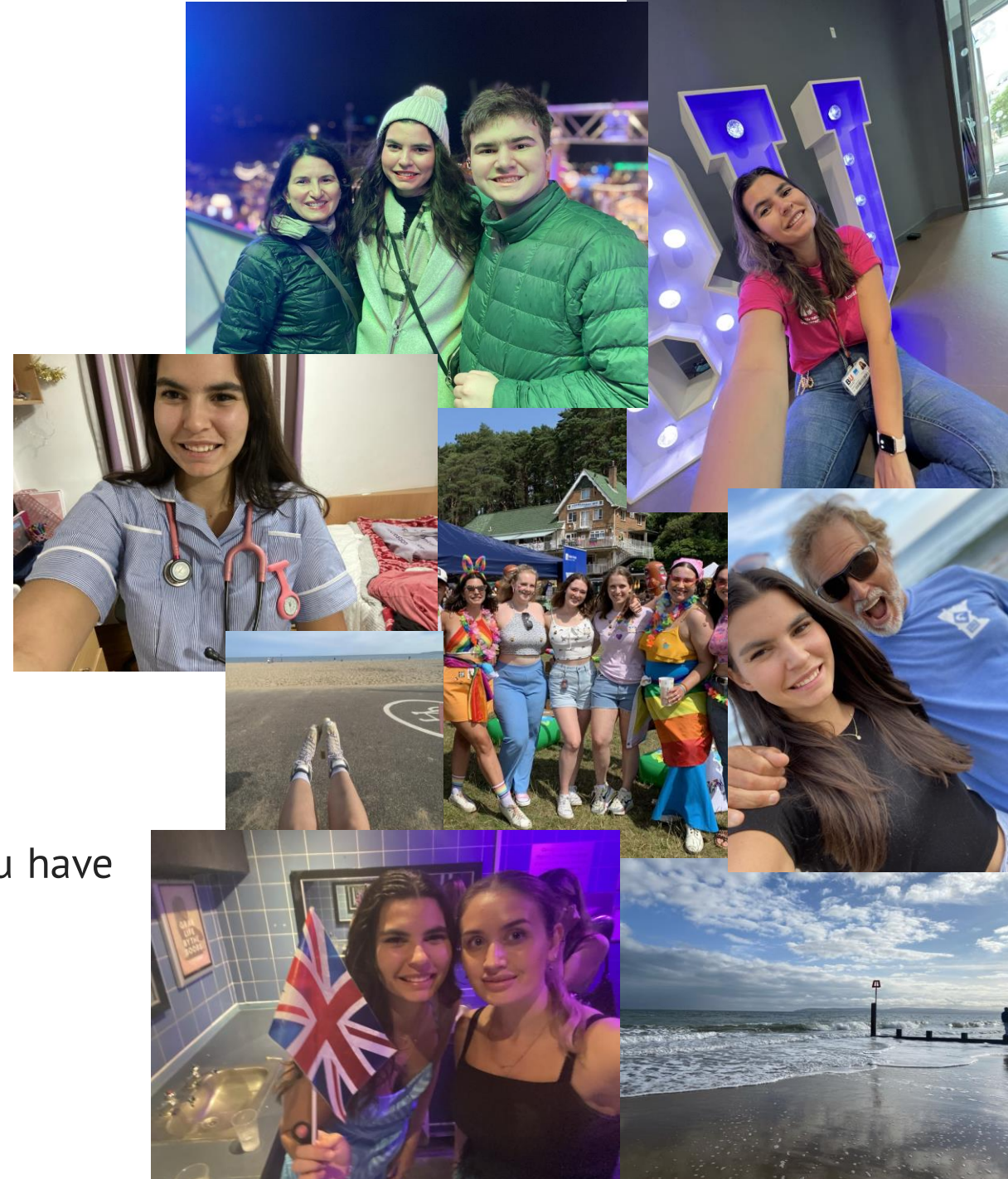
Student life at BU

Applicant Open Day

Spring 2024

Hello from me!

- **Sophia**
 - Midwifery Student
 - Currently in 2nd year, at UHD for Placement
- **My hometown**
 - Minneapolis, MN us
- **Best bits of BU and Bournemouth**
 - The sea/ coastline
 - Lots of random activities for whichever hobby you have
- **Best Advice**
 - Utilise all the Uni support systems
 - Join as many society's as possible



Eat, drink and be merry...



With Music Events for all tastes

Pop | Retro | RnB | Hip Hop | Funk | Reggae
Silent Disco | Techno | Rap | And more...
Society Events and Competitions
BU and AUB Students only!



...at the Old Fire Station on Lansdowne Campus

I want to join a club or society...



No problem, we have more than 100 clubs and societies.

Some are competitive, some for just common interest.

If you want to start your own, you only need 3-5 people.

Just a few minutes away...

Walking from the Halls of Residence:

- Lansdowne Campus (**3 mins**)
- Post Office & Pharmacy (**4 mins**)
- The Old Fire Station (**4 mins**)
- Bournemouth Train Station (**5 mins**)
- Asda and Lidl (**5-7 mins**)
- Town Centre, Lower Gardens & Bus Hub (**15 mins**)
- Car parks so family can visit! (**up to 15 mins**)
- Bournemouth Beach and Pier (**up to 20 mins**)



I need help with...

The Base @ AskBU

Bournemouth Gateway Building
(Lansdowne Campus)

- Timetable
- Student IDs
- IT Support

ResLifeBU

- Homesick?
- Problems with your flat or flatmates?
- Fancy being social?

Placement Coordinators

Bournemouth House, BGB
(Lansdowne Campus)

- 7 dedicated coordinators across our Health & Social Sciences courses

SUBU Advice

Student Centre, 2nd Floor (*Talbot Campus*)

- Free + Confidential
- Drop-in or appointment

Additional Learning Support (ALS)

Library, DLG17 (*Talbot Campus*)

- Learning difference?
- Medical or mental health condition?

Faith & Reflection

Talbot House, Talbot Campus

- You don't need a faith to enjoy tea and biscuits



...unwell? Register with our on-campus GP

- BU Medical Centre
- Find us in Talbot House, Talbot Campus
- Just complete our registration form and bring your student status letter & ID
- Call us Monday – Friday on 01202 965378
- Out of hours service: 01202 720174

...unsafe? Contact our Neighbourhood Police Team or on-campus Security

- Find us in Talbot House on Talbot Campus, room T108
- Call security 24/7 on 01202 965001
- If it's more urgent, call 999 or 101 for free



Want to see more?

Check out our Virtual Tour of both BU campuses and the Bournemouth area:

