

BSc (Hons) Paramedic Science

3 years full time

Welcome

- BU has run paramedic courses since 2008
- BU requirements
- Selection process
- The degree
- Placement
- Specialist placement
- Questions

Admission Requirements

- **UCAS points:** 112 tariff points (from 3 A-Levels including 40 points from a required subject, or equivalent qualifications).
- BTEC Extended Diploma of DMM.
- Access Courses with 15 level 3 credits in Biology
- Drivers licence
- DBS Check
- Occupational Health Check
- Immunizations

Selection process

- We are currently an NHS funded course
- Offer **35** places
- Get about **700** applicants a year
- Personal statement counts

Interview day may include:

- Group work
- One-to-one interview
- Reflective writing piece



The BSc (Hons) degree

- Three years full time
- 750 hours in placement per year in SWASFT & SCAS
- Fit for purpose paramedic

What does this really mean?

- Paramedic Science Context 1
- Identifying Core Skills and Strategies for Holistic Patient Assessment
- Anatomy & Physiology for Paramedics
- Pharmacology for Paramedic Science
- Fundamentals of Acute Care
- Paramedic Practice Portfolio 1



(Prep for year 2)

- Developing Advanced Skills and Strategies for Paramedic Practice
- Exploring Evidence to Guide Professional Practice
- Paramedic Science Context 2
- Fundamentals of Long-Term Conditions across the Life Span
- Anatomy and Physiology for Paramedics – Disease Processes
- Paramedic Practice Portfolio 2



- Paramedic Care for Minor Injuries
- Paramedic Care for Minor Ailments
- Service Improvement in Practice
- Exploring Research and Development in Paramedic Practice
- Paramedic Science Context 3
- Paramedic Practice Portfolio 3



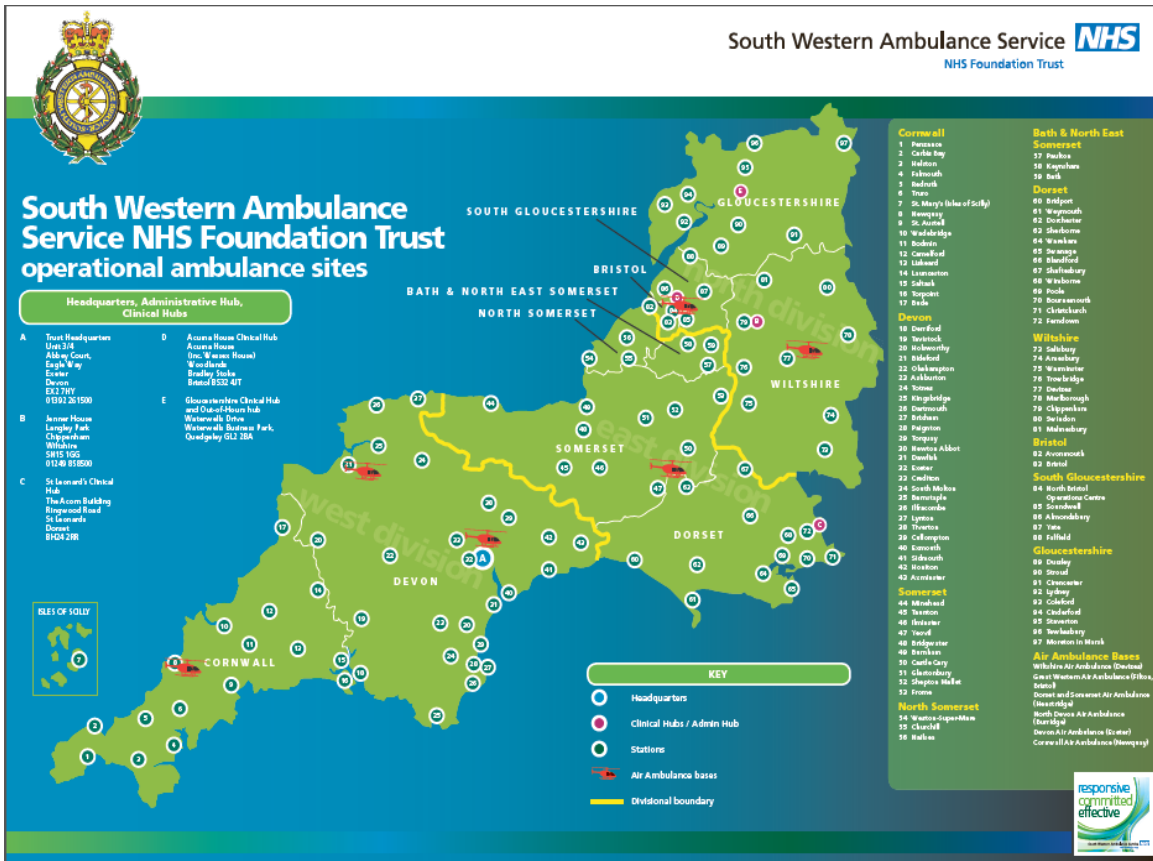
External training facilities

- Bournemouth Airport Fire and Rescue Service
- Dorset Fire and Rescue Service
- RNLI College, Poole
- HM Coastguard Training Centre
- Streetwise

Placements



Covering South West England



Placement expectations

2250 hours over three years

- Emergency ambulances/RRVs
- Community Midwifery
- Mental Health facilities
- Theatres / Recovery
- NICU
- Minor injury centres
- Walk in treatment centres

Qualities of a paramedic

Enthusiasm

Integrity

Compassion

What are we looking for?

Team Players

Honesty

Decision making skills

Hard working

Empathy

Communicators

Being a Paramedic - any time / any condition / anywhere



Questions?



- Admissions tutor: Christoph Schroth
cschroth@bournemouth.ac.uk
- Admission Administrator:
Carissa de Souza
cdesouza@bournemouth.ac.uk