



**Bournemouth
University**

Level up and enhance your career prospects

Postgraduate study with Bournemouth University

#buopenday
#belongatbu

- **A bit more about BU**
- Why postgraduate study/postgraduate research?
- Postgraduate funding
- Student experience and next steps

Love Bournemouth



Who are we

- Bournemouth University evolved in 1992, as a new university – formerly the Dorset Institute of Higher Education
- Over 18,000 students – 2,500 international students from across the world (130+ countries)
- Four faculties across two main sites – Talbot and Lansdowne Campus, and Partner institutions



↑ 18 places in 2022 rankings



Kate Adie CBE DL, BU Chancellor



Incredible learning opportunities

- Live research projects
- Guest lectures



Professionally orientated

- Accreditations
- Placements
- Working with industry

96% of our research was rated as internationally recognised (Research Excellence Framework exercise, 2014)

Research that makes a difference

- Helping people live better for longer
- Contributing to the creative and cultural industries



Our story – "To learn is to change"

The Royal Bournemouth Hospital



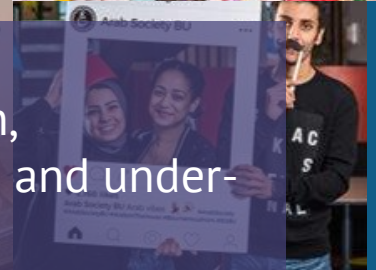
BU is helping people live better, for longer



BU helps to prepare for and recover from crisis



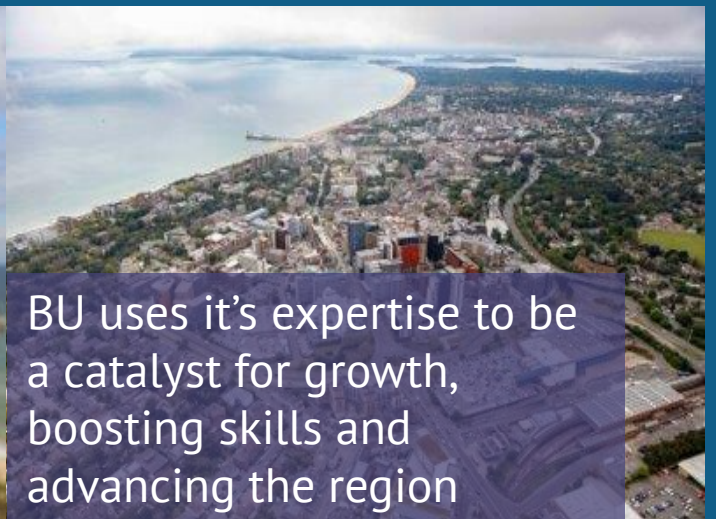
BU challenges marginalisation, misinformation and under-representation



BU helps to protect and preserve a sustainable environment



BU is helping creative industries and cultural heritage to thrive



BU uses its expertise to be a catalyst for growth, boosting skills and advancing the region

Our university

95% of BU graduates would recommend us to prospective students

BU Alumni survey 2020, based on 1,195 respondents

91.1% of UK postgraduates employed/in further study within 15 months of graduating

Graduate Outcomes Survey, 2018/19



Award winning graduates worked on Gravity, Inception & Avatar



More than 1,200 students undertook an international experience between 2017 and 2019

Campuses to be proud of



See it for yourself
Visit our Virtual Tour to see everything in 360°
www.bmth.ac.uk/virtual-tour



**Lansdowne Campus:
Bournemouth Gateway**

**Talbot Campus:
The Fusion Building**

- **Why postgraduate study/postgraduate research?**



Why postgraduate study?

PG Cert | PG Dip | MA | MSc | MBA

Ensuring you can **climb the ladder** with over 90 courses to choose from – a range of conversion and progression options to:

- Improve your career prospects
- Change your direction
- Acquire new skills and experience
- Explore a subject further
- Enter a particular profession/career pathway.

91.1%

**of our students were employed 15 months
after graduating**

Graduate Outcomes Survey, 2018/19

Courses driven by the skills and experience employers demand...

- ✓ **communication skills**
- ✓ **work ethic**
- ✓ **research methods**
- ✓ **team working**
- ✓ **self-management**

- Working collaboratively with academics and industry speakers to deliver our innovative Skills Masterclasses
- Providing you with Your Skills Development Area on Brightspace for up to date tailored learning content
- Recognising your extracurricular achievements alongside your studies through structured pathways



Jenna Darlow



Alexandra Magklaropoulou

Available
to all BU
students!



Why postgraduate research?

MRes | MPhil | PhD | Professional Doctorate

Undertaking a research degree requires a huge amount of commitment, determination and passion for your subject.

Here are a few benefits:

- Enhanced skills and employability
- Preparation for an academic or research career
- Flexible programmes
- Intellectual reward.

Visit the Doctoral College:

www.bournemouth.ac.uk/doctors-college

Develop your skills with our Researcher Development Programme with over 150 workshops:

- ✓ communication and teamwork
- ✓ project management
- ✓ data analysis
- ✓ advanced IT
- ✓ problem solving
- ✓ independent thinking
- ✓ critical thinking
- ✓ organisation
- ✓ time management

Entry requirements for international students

- Qualification equivalent to a UK Bachelor's degree with specific grades, depending on the course
- English qualification, such as IELTS 6.0 overall (5.5 each component) or equivalent (Cambridge Advance Exam, PEARSON, TOEFL)
- Bournemouth University International College Pre-sessional English courses - only available for our offer holders (different entry stages throughout the year).

Applying to BU

1 Prepare

Prepare your application documents:

- Your up-to-date transcript (if you are currently studying) or your final transcript (if you have completed your last qualification)
- Your most recent academic qualification (e.g. Bachelor's degree if you are currently studying an undergraduate course)
- Your Personal Statement
- One academic reference (some courses require a professional reference too) – either contact details or a letter to upload (or professional reference if you left university over two years ago)
- Check out tips on how to apply here: www.bournemouth.ac.uk/pg-apply

2 Apply

Make your application to BU:

- Go to www.bournemouth.ac.uk/courses, choose the postgraduate course that you're interested in and click 'Apply now'. You will then be taken to our online application portal (myHub) to register an account, submit your application and upload the required application documents
- You can also apply for a BU scholarship at this point – visit www.bournemouth.ac.uk/pg-scholarships

3 Offer

BU aims to make you an offer within one week of a fully completed application. If your course requires an interview or additional selection measure, it may take a little longer.

- A conditional offer means you need to provide further evidence and your offer will contain full details of what is required
- An unconditional offer means you have met all of our academic entry requirements and you are ready to join us (subject to completing all your actions in myHub before enrolment)

Fast track application option for
current BU students and graduates

www.bournemouth.ac.uk/fast-track

- **Postgraduate funding**



The cost of PG Study

Postgraduate loan of up to

£11,836

Non-income assessed for
September 2022 and January
2023

Doctoral loan of up to

£27,892

Non-income assessed for
September 2022 and January
2023

- Loan paid in **three instalments**
- BU offers scholarships
- Annually we offer several fully-funded PhD studentships
- **Find out more:** www.bournemouth.ac.uk/pg-funding

Paying it back

- Loan repayments will start only when you have finished your studies and earning £21,000 or over.

6%

Of your income above
£21,000 (before tax)

Repay alongside 9% of any existing undergraduate 'Plan 2' loan (15%).

Interest accrues on the loan from the moment you take it out, currently this is RPI% + up to 3%

INCOME		REPAYMENT		
Annual (before tax)	Monthly	Plan 2 loan	Postgraduate Loan	Total monthly repayment
£21,000	£1,750	£0	£0	£0
£23,000	£1,916	£0	£9	£9
£25,000	£2,083	£0	£19	£19
£27,295	£2,275	£0	£30	£30
£30,295	£2,525	£23	£45	£68

Building a funding portfolio

- **Charities, foundations and trusts**

- Provide bursaries & scholarships to students who need help studying in their field of interest - Economic hardship, academic excellence or subject specialism
 - Charities Digest
 - The Directory of Grant-Making Trusts (Directory of Social Change)
 - The Grants Register: the Complete Guide to Postgraduate Funding Worldwide (Palgrave Macmillan Ltd)
 - The Educational Grants Directory (Directory of Social Change)

- **Employer sponsorship**

- A win-win situation - you study for a qualification that will improve your ability to do your job and your employer benefits from a better qualified, productive and motivated employee
- Arrangements can be set-up with our finance team

www.postgraduatefunding.com

www.postgraduate-funding.com/gateway

Pin: 6199

Other funding

- **Disabled Students' Allowance** - If you have a disability, mental health condition, long-term health condition or specific learning difficulty
- **Grants**

International students in the UK:

- Visit the UK Council for International Student Affairs (UKCISA) at www.UKCISA.org.uk

- ✓ **Be proactive about additional funding routes**
- ✓ **Clarify your own justification for postgraduate study to strengthen your application**
- ✓ **Bundle support to build a portfolio of funding that suits your needs**



Other funding

- **Nursing:**
 - **Student loans company loans** – the same as those available to undergraduate students.
 - **Government training grant** - £5,000 a year
- **Physician Associate Studies training grant**
- **Social Work Bursary**



Part-time work

- Careers and Employability Service: job shop on campus
- On-campus opportunities
 - SUBU venues and shops
 - BU Student Ambassador
- Local part-time work and seasonal roles
- Temporary contracts

20 hours

BU supports and recommends around 20 hours or part-time work as realistic alongside your studies.



Financial support

Fee flexibility
Pay your fees in
two
instalments

**20% BU
graduate
discount**

**10% student
family discount**

**Student
Support
for
emergencies**

BU Academic Achievement Scholarship (UK)*

£2,000

When you achieve

2:1 or above

(and equivalents)

BU Academic Excellence Scholarship (International)*

£3,500

When you achieve
equivalent to

2:1 or above

Chevening Scholarships (International)

100%

of fee and
other allowances

*All taught full-time Postgraduate Taught courses are eligible, with the exception of any distance learning courses. CPD, PGCert, PGDip and part-time programmes are excluded unless stated otherwise on our website.

www.bournemouth.ac.uk/pg-scholarships

Scholarships



BU Excellence in Sport Scholarship

Up to **£5,000**

Supporting elite athletes representing
their sport at a national or junior level



BU Excellence in Music Scholarship

Benefits package worth

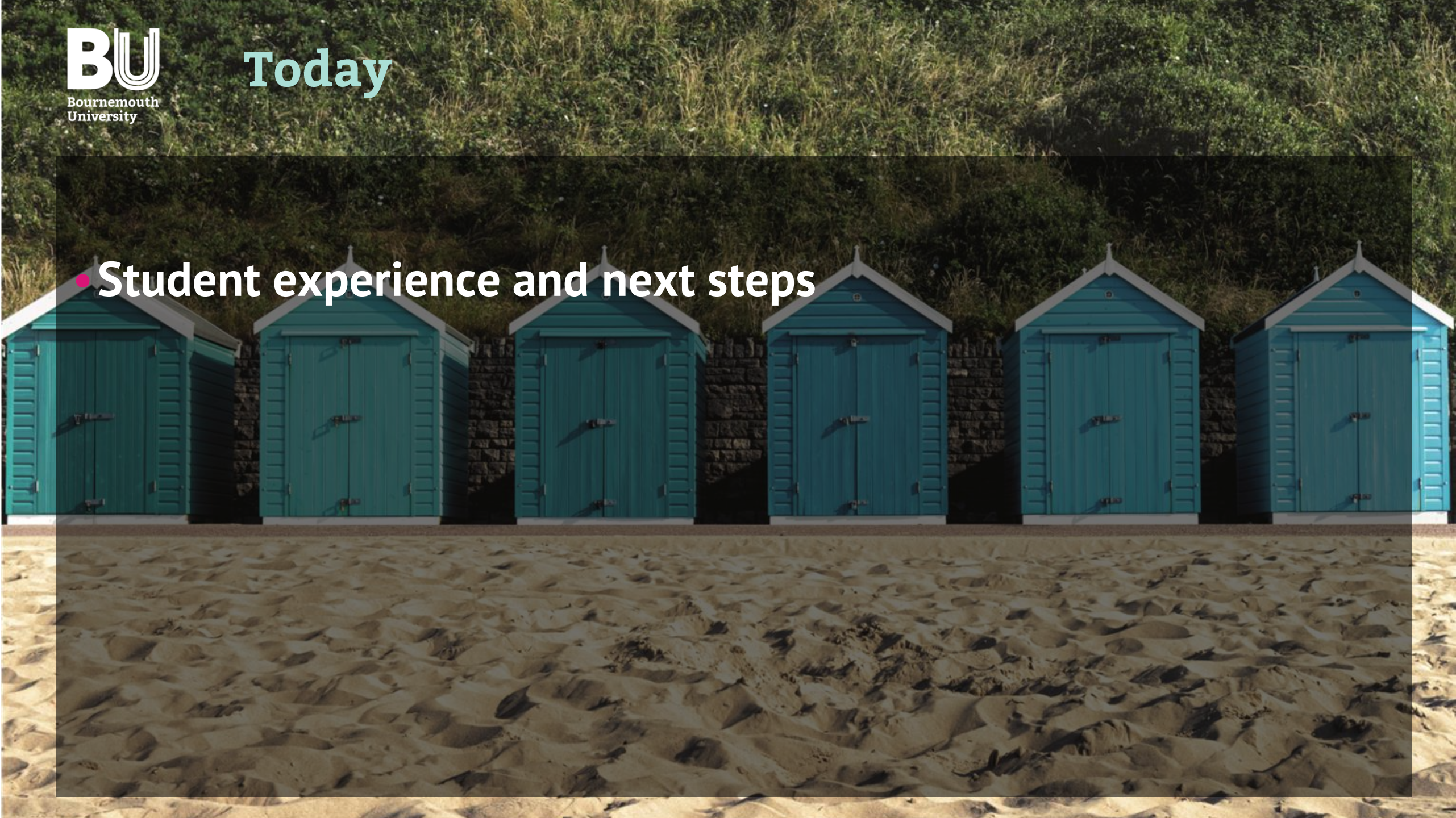
up to **£600**

per year

Supporting outstanding musicians and
singers who raise the profile of BU's
performance-based output

www.bournemouth.ac.uk/pg-scholarships

- **Student experience and next steps**



It's going to be great...

- A wide variety of accommodation options, both on and off-campus and in halls of residence or Unilet (BU managed housing).
- Specific accommodation options for couples and families and/or those with additional needs.
- Good transport links to the university campuses from all sites
- Cycle storage
- Internet connection
- Laundry facilities
- Student parking very limited

**Guaranteed
Accommodation**

See website for all the
details.

Please note:

The accommodation prices quoted in this presentation are for the 2021/22 academic year.

Accommodation that suits you

Shared flats from
£6,775
50 week tenancy



Options shown: Chesil House from £6,775.50, Bailey Point from £9,462.50 (includes bills, bus pass and ResLifeBU).

Other options online

Accommodation that suits you

Studio flats from
£7,690
50 week tenancy

Getting moved in

Stage 1

Register for your accommodation guarantee

when you receive an offer from us

Stage 2

Book your room using our online booking system. View buildings, floors and housemate profiles.

when your place is confirmed

We've got this covered.

Your rent includes...

- ✓ **12 month unlimited BU bus pass (£250)**
 - ✓ Covers all university travel
 - ✓ Includes some local buses too
 - ✓ You can opt-out of this
- ✓ **Internet usage**
- ✓ **Basic contents insurance**
- ✓ **Bills** (gas, electric, water, sewerage)
- ✓ **ResLifeBU programme**

Bookings open from March

You'll be able to book from all the available options.

Deposit or rental contributions vary by building – see website for details



Your skills

- **Lifestyle** – ‘Ready, steady, cook’, ‘Masterchef’, work/life balance, budgeting
- **Study** – CV workshops, placements support, Revision



Your social life

- Organised activities & socials – Winter Ice Ball, Welcome BBQ, ‘Come dine with me’, ‘It’s a knockout’, Paddle boarding, cultural celebrations and more...

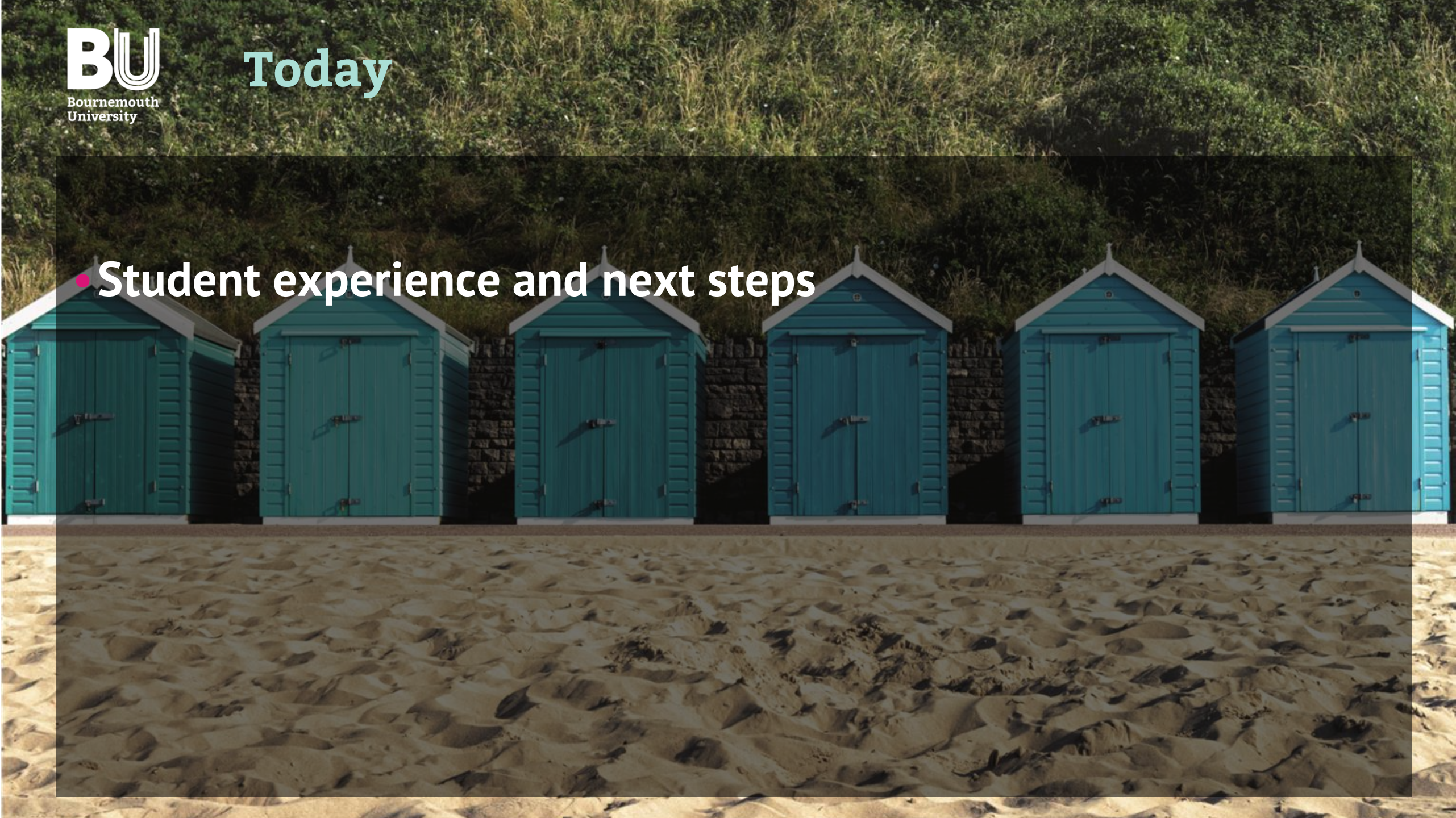


Your wellbeing

- Welfare Coordinators for all BU accommodation
- Integration with BU wellbeing services
- Workshops for wellbeing & ‘stress-free’ socials



- **Student experience and next steps**



Being a BU student



Student experience



Clubs and Societies



Annual Conference



UK and International Day



Postgraduate Summer Ball

Let our students tell you their story

www.bournemouth.ac.uk/student-blog



The logo for Bournemouth University, featuring the letters 'BU' in a stylized, white, outlined font. The 'B' and 'U' are connected at the top. The background of the entire slide is a photograph of a pier at dusk, with lights reflecting on the water and a building on the pier.

**Bournemouth
University**

Thank you for watching

Contact us: 01202 961916

futurestudents@bournemouth.ac.uk

We've provided the latest information available at the time of delivery (Spring 2022).

For the latest information, visit our website:
www.bournemouth.ac.uk