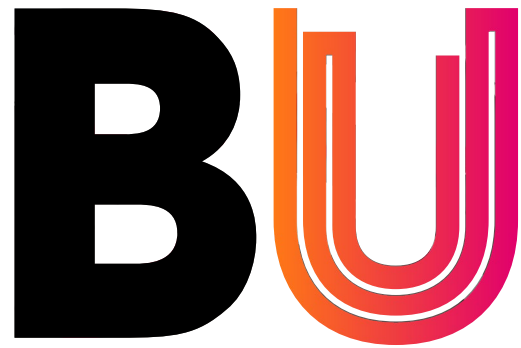


Welcome to



**Bournemouth  
University**

#BUOpenDay

#BelongAtBU

# Who are we?



## Our vision

is to be recognised worldwide as a leading university for inspiring learning, advancing knowledge and enriching society through the fusion of education, research and practice



## 18,000 students

2,500 international students from across the world (130+ countries)



## Across two sites

Talbot Campus & Lansdowne Campus, and partner institutions

**Kate Adie**

CBE DL, BU Chancellor



- We're ranked as a top 10 university in the UK in the Times Higher Education Impact Rankings 2024 and joint 39th globally.
- We're 95th in the world and 3rd in the UK in the Times Higher Education Young University Rankings 2024.
- We're in the top 500 in the 2025 Times Higher Education World University Rankings.

# Our university

**95%**

of BU graduates would  
recommend us to  
prospective students.

BU Alumni survey 2020, based on 1,195 respondents

**89.3%**

of all BU postgraduate  
graduates are employed or in  
further study within 15 months  
of graduating.

Graduate Outcomes 2021/22 survey results  
published by the Higher Education Statistics Agency  
(HESA). HESA open data is published under the (CC  
BY 4.0) licence



# We are...



## Professionally orientated

Professional accreditations  
Placements  
Working with industry



## Incredible learning opportunities

Live research projects  
Guest lectures  
Study abroad



## Research that makes a real difference

Helping people live better for longer  
Contributing to the creative and cultural industries

**94%**  
of research rated as internationally-recognised or above\*

# Explore our story



# Why we love Bournemouth



# Campuses to be proud of



Lansdowne Campus



# Facilities to be proud of



Chapel Gate:  
Multi-sports facility



# Support & wellbeing

✓ AskBU – General Support

✓ On-site childcare facilities (Talbot Campus)

✓ Additional Learning Support

✓ Careers advice & MyCareerHub

✓ On-site Police team (Talbot Campus)

✓ Subject Librarians & Experts

✓ Faith & Reflection Service

✓ Advice (Students' Union)

✓ Student Wellbeing

✓ ResLifeBU



# Why postgraduate study?

PG Cert | PG Dip | MA | MSc | MBA

## Ensuring you can climb the ladder

With over 90 courses to choose from – a range of conversion and progression options to:

- Improve your career prospects
- Change your direction
- Acquire new skills and experience
- Explore a subject further
- Enter a particular profession/career pathway.

## Courses driven by the skills and experience employers demand...

- ✓ Communication skills
- ✓ Work ethic
- ✓ Research methods
- ✓ Team working
- ✓ Self-management

**89.3%**

of our students were employed/study 15 months

after graduating  
(Graduate Outcomes Survey, 2021/22)



# The Graduate Skills Programme

**mazars** NHS University Hospitals Dorset **LUSH** Marriott Bournemouth Highcliff BCP IBM

**SIGN UP TODAY!**

GRADUATESKILLS@BOURNEMOUTH.AC.UK  
WWW.BOURNEMOUTH.AC.UK/GRADUATE-SKILLS-PROGRAMME

# The cost of Postgraduate study

- Course fees depend on the course you are studying and whether you are a Home (UK) or International student
- Government Loan paid in three instalments\*. Check eligibility and apply via the gov.uk website
- Find out more:  
[www.bournemouth.ac.uk/pg-funding](http://www.bournemouth.ac.uk/pg-funding)

Postgraduate Loan of up  
to

**£12,858\***

Non-income assessed  
For September 2025 and  
January 2026 entry

\*Terms and conditions apply. See website for details.

# Funding your studies



## Fee flexibility

Pay your fees in two instalments\*



## 20% tuition fee reduction for BU graduates



## 10% student family tuition fee discount



## BU financial support fund

Up to £1,000 for emergencies  
(Home students only)

\*If you have been awarded a Postgraduate Loan and are paying online, you may elect to pay your tuition fees in four instalments.



# Building a funding portfolio

## ▪ Charities, foundations and trusts

- Provide bursaries & scholarships to students who need help studying in their field of interest - Economic hardship, academic excellence or subject specialism
  - Charities Digest
  - The Directory of Grant-Making Trusts (Directory of Social Change)
  - The Grants Register: the Complete Guide to Postgraduate Funding Worldwide (Palgrave Macmillan Ltd)
  - The Educational Grants Directory (Directory of Social Change)

Search [www.postgraduate-funding.com/gateway](http://www.postgraduate-funding.com/gateway)  
Pin: 6199

## ▪ Employer sponsorship

- A win-win situation - you study for a qualification that will improve your ability to do your job and your employer benefits from a better qualified, productive and motivated employee

- ✓ **Be proactive about additional funding routes**
- ✓ **Clarify your own justification for postgraduate study to strengthen your application**
- ✓ **Bundle support to build a portfolio of funding that suits your needs**

# The cost of study (Nursing)

MSc Adult Nursing and MSc Mental Health Nursing  
Students can access an undergraduate student loan from the Student Loans Company.

- **Tuition Fee Loan** to cover full amount
- Students do not start repayment until income is **over £25,000\*** a year, **£2,083** a month, **£480** a week
- **Maintenance Loans** are for day-to-day costs – typically accommodation, travel, domestic bills etc
- 45% non-income assessed, 55% income assessed based on your household income.

**Tuition Fee Loan**  
**£9,250\***  
per year, Honours degree  
courses

\*Under review for 2025/26 entry

**Maintenance Loan**  
up to  
**£13,762**  
living away from home, not  
in London  
(for 2025/26 entry)



# NHS Funding: NHS Training Grant

- This funding does not need to be repaid
- Register for an online account via the **NHS Learning Support Fund application system** found on the NHS website
- You must apply within six-months of starting study
- Paid in three instalments– intermittent with termly student loan payments
- You will need to reapply each year

Up to  
**£8,000**  
per annum

**£5,000**

All students  
studying on  
eligible courses

**£1,000**

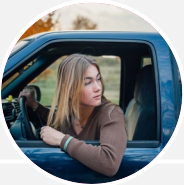
Specialist  
disciplines

**£2,000**

Additional  
childcare  
allowances



# NHS Funding: Travel and Dual Accommodation Expenses



## Travel

If it costs you more to travel from your term time address to your practice placement site than it does from your term time address to university/normal place of study, you can claim the difference per day.



## Placement accommodation

You may be able to claim for the cost of temporary (secondary) accommodation for the purposes of attending a compulsory practice placement. Commercial up to £82.50 per night, non-commercial up to £37.50 per night

- You can claim via your NHS Learning Support Fund account
- Claims must be made within six months of the cost being incurred
- Payment usually arranged within 20 working days of receiving the form

# NHS Funding: MA Social Work

- This funding does not need to be repaid
- Register for an online account via the **NHS Learning Support Fund application system** found on the NHS website
- You must apply within six-months of starting study
- Paid in three instalments– intermittent with termly student loan payments
- You will need to reapply each year

**£3,762.50**

Social Work  
Bursary

**£862.50**

Placement  
travel allowance

Up to  
**£4,052**  
per annum



# Training grant: Physician Associate Studies

- MSc and PG Dip students will receive a training grant of £5,000
- Two instalments of £2,500 per annum
- Can be used against course fees, placement travel, or similar costs incurred during the course.

Training grant  
**£5,000**  
per annum



# Scholarships – UK/CI and ROI students

**BU Academic  
Achievement Scholarship\***

**£2,000**

When you achieve **2:1** or above  
(and equivalents),  
September 2025 and January 2026 entry

\*All taught full-time and part-time structured Postgraduate Taught courses are eligible, with the exception of any distance learning courses. CPD, PGCert, PGDip and part-time programmes are excluded unless stated otherwise on our website.

[www.bournemouth.ac.uk/pg-scholarships](http://www.bournemouth.ac.uk/pg-scholarships)



# Scholarships – international students

## **BU Academic Achievement Scholarship\***

When you achieve the equivalent of a UK Hons degree with **2:1** or above

**£2,000**

Sept 2025 and Jan 2026 entry

## **BU Academic Excellence Scholarship\***

When you achieve the equivalent of a UK Hons degree with **2:1** or above

**£4,500**

Sept 2025 and Jan 2026 entry

\*All taught full-time Postgraduate Taught courses are eligible, with the exception of any distance learning courses. CPD, PGCert, PGDip and part-time programmes are excluded unless stated otherwise on our website. Applicants for the Postgraduate Diploma Legal Practice (LPC) and Graduate Diploma in Law (CPE) are eligible for the Academic Achievement Scholarship.

[www.bournemouth.ac.uk/pg-scholarships](http://www.bournemouth.ac.uk/pg-scholarships)



# Scholarships

## BU Excellence in Sport Scholarship

Up to **£5,000**

Supporting elite athletes representing their sport at a national or junior level

## BU Excellence in Music Scholarship

Benefits package worth  
approximately **£600**  
per year

Supporting outstanding musicians and singers who raise the profile of BU's performance-based output

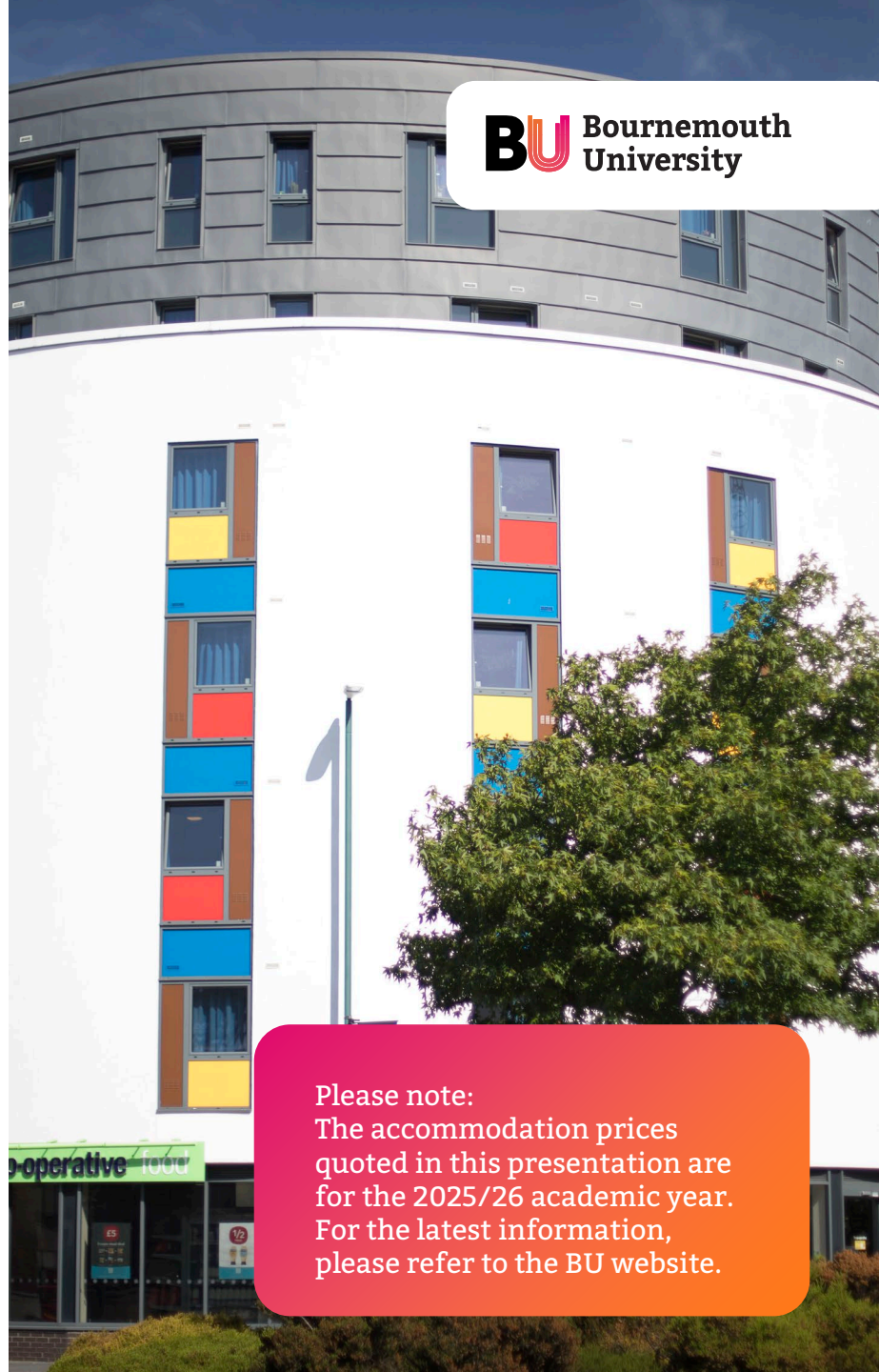


# It's going to be great...

- A wide variety of accommodation options, both on and off-campus and in halls of residence.
- Specific accommodation options for couples and families and/or those with additional needs.
- Good transport links to the university campuses from all sites
- Cycle storage
- Internet connection
- Laundry facilities
- Student parking very limited.

**Guaranteed accommodation for September 2025 entry**

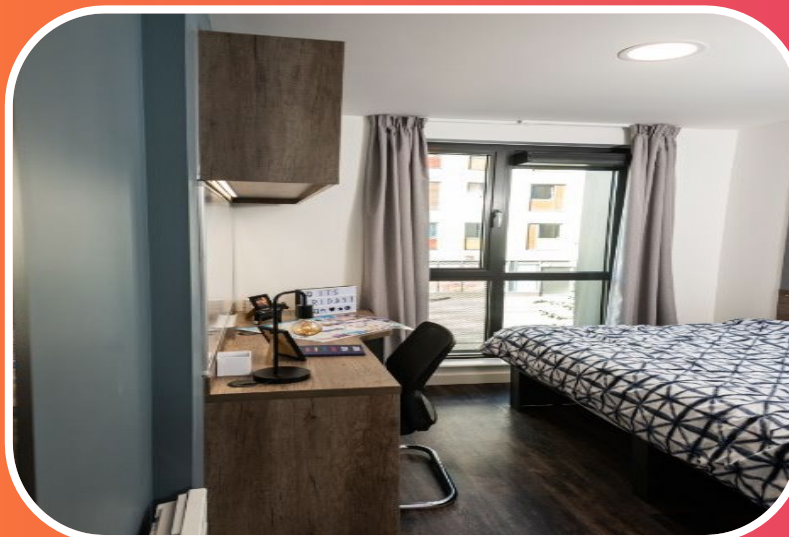
See website for the terms and conditions.

A photograph of a modern, curved building at Bournemouth University. The building has a grey upper section with windows and a white lower section with colorful rectangular panels in blue, red, and yellow. A green tree is in the foreground on the right, and a 'co-operative' sign is visible at the bottom left.

Please note:  
The accommodation prices  
quoted in this presentation are  
for the 2025/26 academic year.  
For the latest information,  
please refer to the BU website.

# Accommodation that suits you

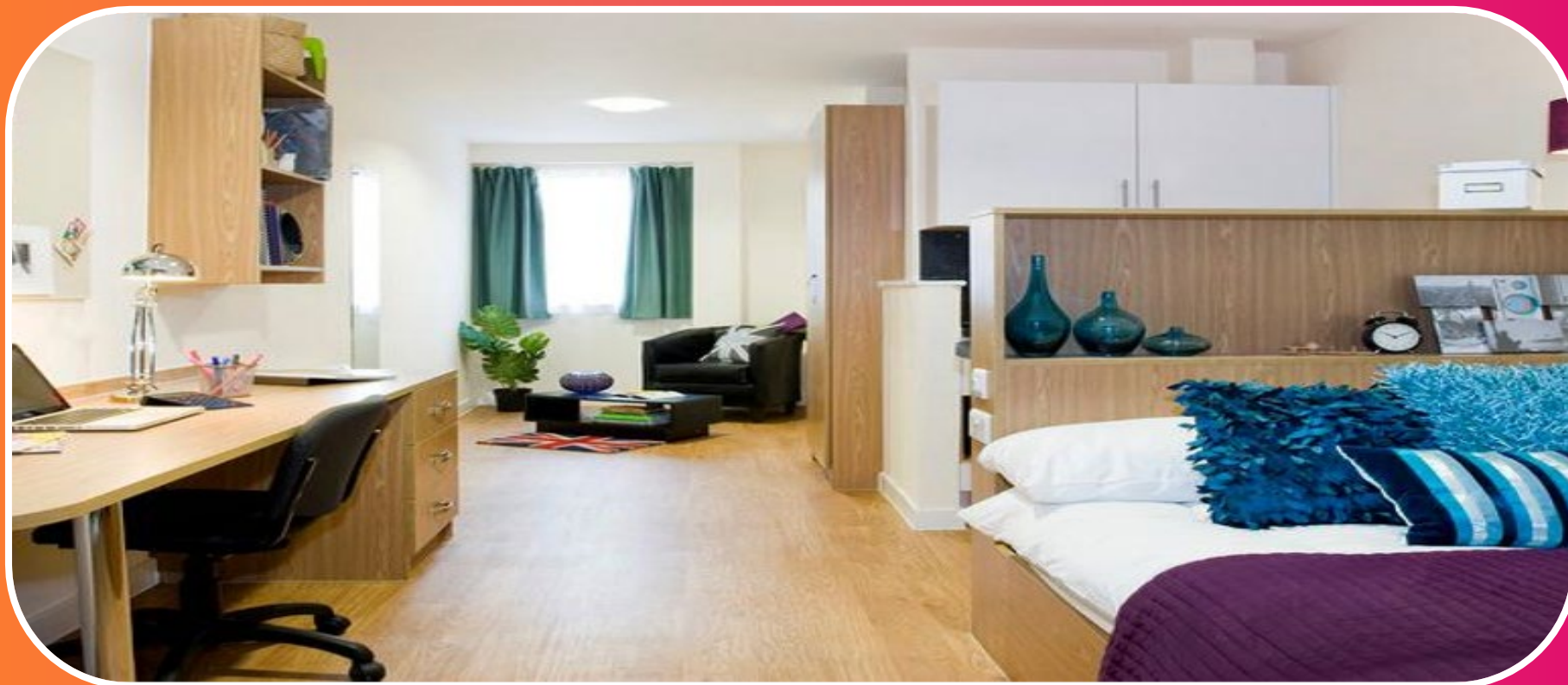
Shared flats from  
**£167.99 pw**  
50-week tenancy



Options shown: Chesil House from £168.81 pw, Bailey Point from £233.17 pw (includes bills, bus pass and ResLifeBU).  
**Other options online.**

# Accommodation that suits you

Studio flats from  
**£198.98 pw**  
50-week tenancy



Price stated – Chesil House studio 50-weeks (includes bills , bus pass and ResLifeBU) | Option shown: Dorchester House from £220.37 pw.

# Getting moved in

## Stage 1

When BU is your **firm** choice

- Register your interest in accommodation

## Stage 2

Reserve your room

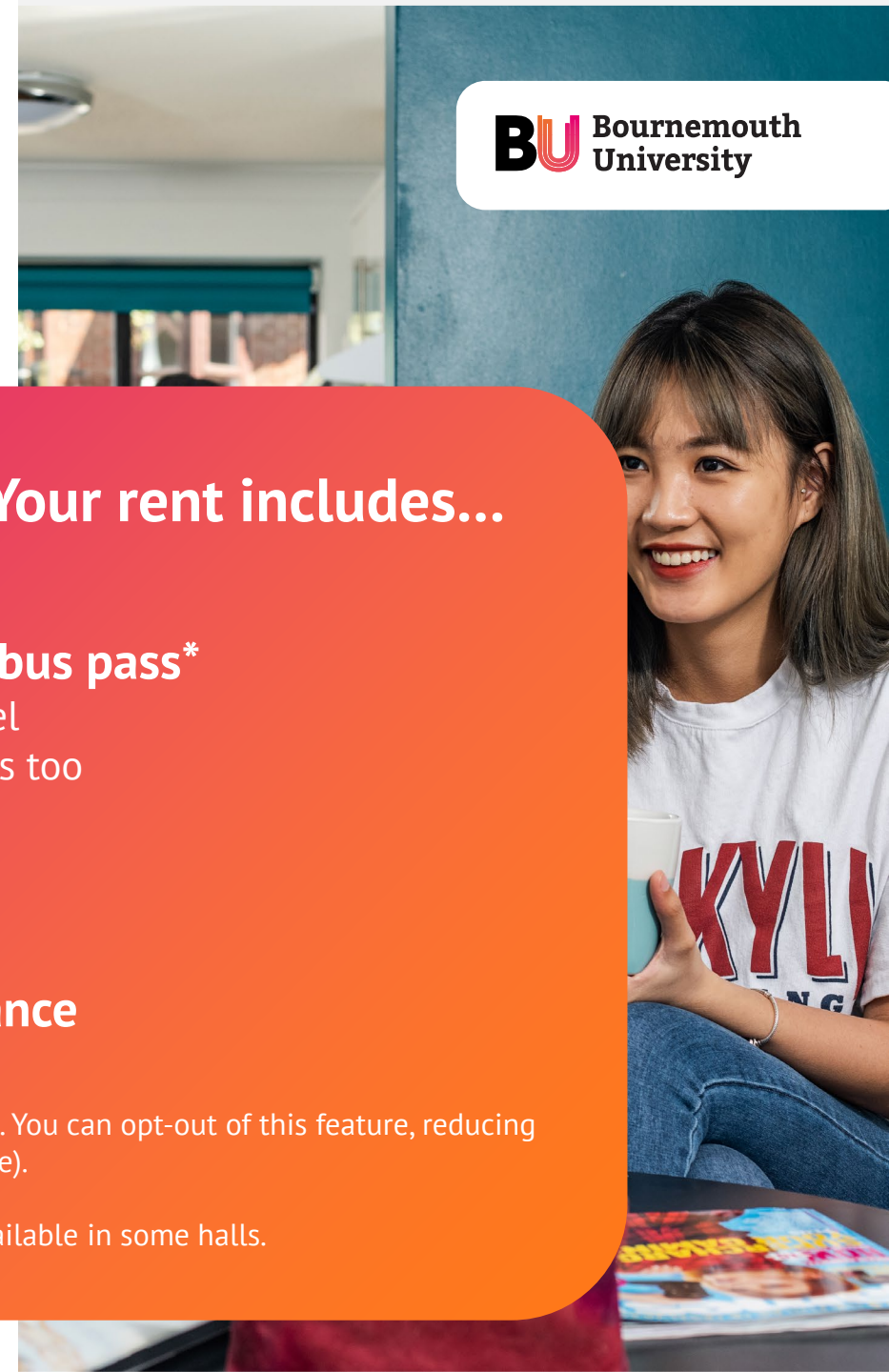
- UF – pay and sign to secure your room
- CF – wait for results before securing your room

## We've got this covered. Your rent includes...

- ✓ **ResLifeBU programme**
- ✓ **12-month unlimited BU bus pass\***
  - ✓ Covers all university travel
  - ✓ Includes some local buses too
- ✓ **Internet usage\*\***
- ✓ **Bills** (gas, electric, water, sewerage)
- ✓ **Personal contents insurance**

\*Providing unlimited travel on selected services. You can opt-out of this feature, reducing rental payment by £308 (2025/26 entry figure).

\*\*Additional services/premium packages are available in some halls.



# ResLifeBU - You're part of our community



## Your skills

- Lifestyle – ‘Ready, steady, cook’, ‘Masterchef’, work/life balance, budgeting
- Study – CV workshops, placements support, Revision



## Your social life

- Organised activities & socials – Winter Ice Ball, Welcome BBQ, ‘Come dine with me’, ‘It’s a knockout’, Paddle boarding, cultural celebrations and more...



## Your wellbeing

- Welfare Coordinators for all BU accommodation
- Integration with BU wellbeing services
- Workshops for wellbeing & ‘stress-free’ socials



# Applying to BU

## Prepare

- Prepare your application documents, such as:
  - Up-to-date transcript
  - Your most recent academic qualification
  - Your personal statement

## Apply

- Go to **[www.bournemouth.ac.uk/pg-courses](http://www.bournemouth.ac.uk/pg-courses)**, choose the postgraduate course that you are interested in and click 'Apply now'. You will then be taken to our online application portal (myHub) to register an account, submit your application and upload the required application documents

## Offer

- We aim to make you an offer within one month of a fully completed application. If your course requires an interview or additional selection measure, it may take a little longer.



**Fast track application option  
for BU students and  
graduates:**

**[www.bournemouth.ac.uk/fast-track](http://www.bournemouth.ac.uk/fast-track)**



# Contact us

📞 01202 961916

✉️ [futurestudents@bournemouth.ac.uk](mailto:futurestudents@bournemouth.ac.uk)

We've provided the latest information available at the time of delivery (March 2025).

For the latest information, visit our website: [www.bournemouth.ac.uk](http://www.bournemouth.ac.uk)