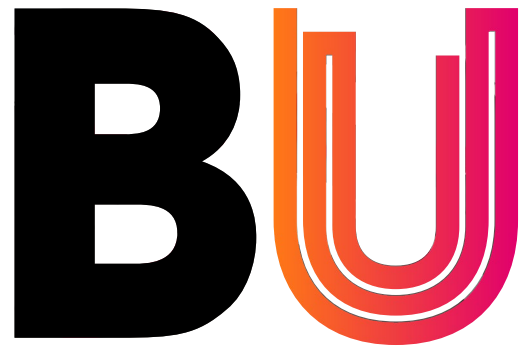


Welcome to



**Bournemouth
University**

#BUOpenDay

#BelongAtBU

Who are we?



Our vision

is to be recognised worldwide as a leading university for inspiring learning, advancing knowledge and enriching society through the fusion of education, research and practice



18,000 students

2,500 international students from across the world (130+ countries)



Across two sites

Talbot Campus & Lansdowne Campus, and partner institutions

Kate Adie

CBE DL, BU Chancellor



- We're ranked as a top 10 university in the UK in the Times Higher Education Impact Rankings 2024 and joint 39th globally.
- We're 95th in the world and 3rd in the UK in the Times Higher Education Young University Rankings 2024.
- We're in the top 500 in the 2025 Times Higher Education World University Rankings.

Our university

95%

of BU graduates would recommend us to prospective students.

BU Alumni survey 2020, based on 1,195 respondents

89.3%

of all BU postgraduate graduates are employed or in further study within 15 months of graduating.

Graduate Outcomes 2021/22 survey results published by the Higher Education Statistics Agency (HESA). HESA open data is published under the (CC BY 4.0) licence

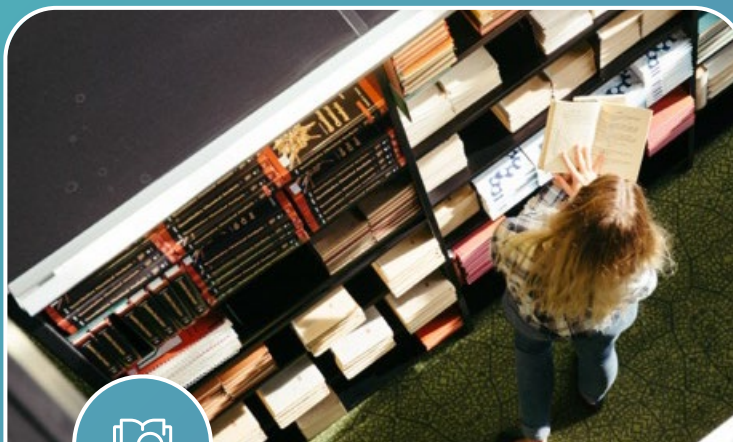


We are...



Professionally orientated

Professional accreditations
Placements
Working with industry



Incredible learning opportunities

Live research projects
Guest lectures
Study abroad



Research that makes a real difference

Helping people live better for longer
Contributing to the creative and cultural industries

94%

of research rated as internationally-recognised or above*

Explore our story



Why we love Bournemouth



Campuses to be proud of



Talbot Campus



Campuses to be proud of



Lansdowne Campus



Facilities to be proud of



Chapel Gate:
Multi-sports facility



Sustainability at BU

What we've achieved so far:

2,000+

solar panels have enabled us to avoid releasing over 550 tonnes of CO₂e

Joint **1st**
for SDG 12 Responsible
Consumption and Production.*

Joint **39th in the
world**

For our contribution to the UK
Sustainable Development
Goals.*

**Refill
campus**

Use your water bottle at one of
our 45 refill points on campus.



Support & wellbeing

✓ AskBU – General Support

✓ On-site childcare facilities

✓ Additional Learning Support

✓ Careers advice & MyCareerHub

✓ On-site Police team

✓ Subject Librarians & Experts

✓ Faith & Reflection Service

✓ Advice (Students' Union)

✓ Student Wellbeing

✓ ResLifeBU



Why postgraduate study?

PG Cert | PG Dip | MA | MSc | MBA

Ensuring you can climb the ladder

With over 90 courses to choose from – a range of conversion and progression options to:

- Improve your career prospects
- Change your direction
- Acquire new skills and experience
- Explore a subject further
- Enter a particular profession/career pathway.

Courses driven by the skills and experience employers demand...

- ✓ Communication skills
- ✓ Work ethic
- ✓ Research methods
- ✓ Team working
- ✓ Self-management

89.3%

of our students were employed/study 15 months

after graduating
(Graduate Outcomes Survey, 2021/22)



The Graduate Skills Programme

mazars NHS University Hospitals Dorset **LUSH** Marriott Bournemouth Highcliff BCP IBM

SIGN UP TODAY!

GRADUATESKILLS@BOURNEMOUTH.AC.UK
WWW.BOURNEMOUTH.AC.UK/GRADUATE-SKILLS-PROGRAMME

The cost of Postgraduate study

- Course fees depend on the course you are studying and whether you are a Home (UK) or International student
- Government Loan paid in three instalments*. Check eligibility and apply via the gov.uk website
- Find out more:
www.bournemouth.ac.uk/pg-funding

Postgraduate Loan of up
to

£12,858*

Non-income assessed
For September 2025 and
January 2026 entry

*Terms and conditions apply. See website for details.

Paying back the loan

- Loan repayments will start only when you have finished your studies and earning £21,000 or over.
- Repay alongside 9% of any existing undergraduate 'Plan 2' loan (15%).
- Interest accrues on the loan from the moment you take it out, currently this is RPI% + up to 3%.

INCOME		REPAYMENT		
Annual (before tax)	Monthly	Plan 2 loan	Postgraduate loan	Total monthly repayment
£21,000	£1,750	£0	£0	£0
£23,000	£1,916	£0	£9	£9
£25,000	£2,083	£0	£19	£19
£27,295	£2,275	£0	£30	£30
£30,295	£2,525	£23	£45	£68

6%

of your income
above £21,000
(before tax)

Funding your studies



Fee flexibility

Pay your fees in two instalments*



20% tuition fee reduction for BU graduates



10% student family tuition fee discount



BU financial support fund

Up to £1,000 for emergencies
(Home students only)

*If you have been awarded a Postgraduate Loan and are paying online, you may elect to pay your tuition fees in four instalments.



Building a funding portfolio

▪ Charities, foundations and trusts

- Provide bursaries & scholarships to students who need help studying in their field of interest - Economic hardship, academic excellence or subject specialism
 - Charities Digest
 - The Directory of Grant-Making Trusts (Directory of Social Change)
 - The Grants Register: the Complete Guide to Postgraduate Funding Worldwide (Palgrave Macmillan Ltd)
 - The Educational Grants Directory (Directory of Social Change)

Search www.postgraduate-funding.com/gateway
Pin: 6199

▪ Employer sponsorship

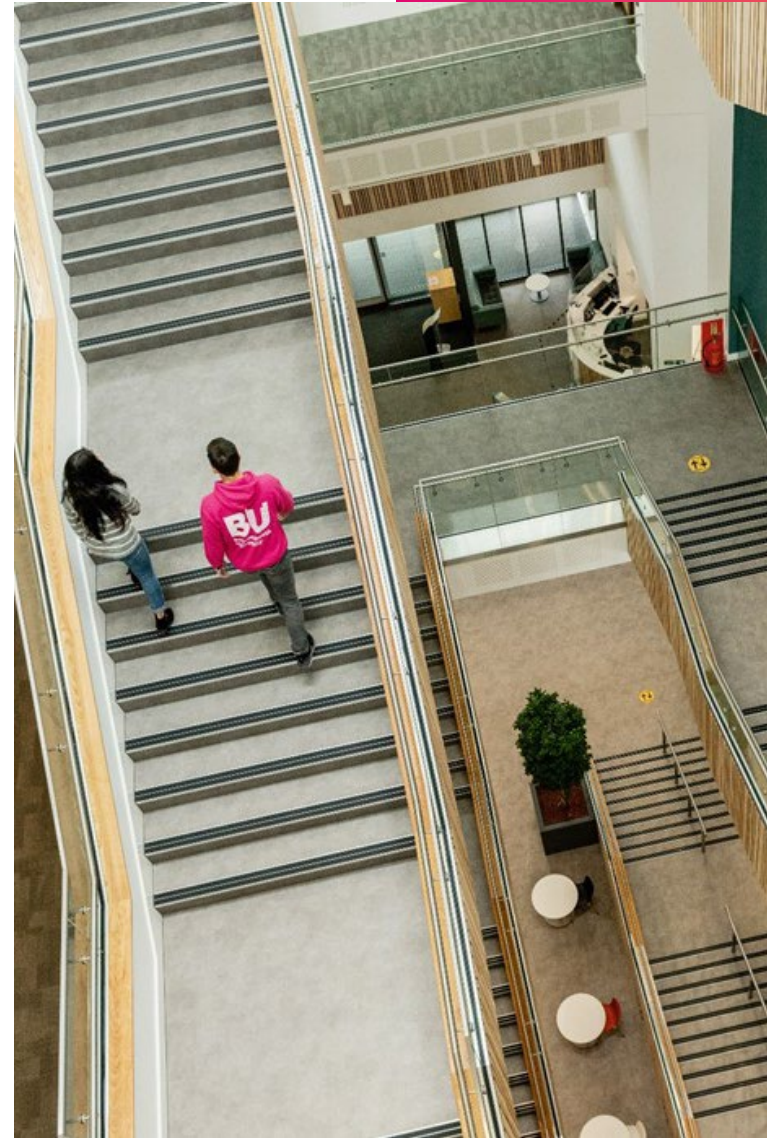
- A win-win situation - you study for a qualification that will improve your ability to do your job and your employer benefits from a better qualified, productive and motivated employee

- ✓ **Be proactive about additional funding routes**
- ✓ **Clarify your own justification for postgraduate study to strengthen your application**
- ✓ **Bundle support to build a portfolio of funding that suits your needs**

Part-time work

- CareersBU Service: job shop on campus
- On-campus opportunities (SUBU venues & shops, BU Student Ambassador)
- Local part-time work and seasonal roles
- Temporary contracts

20 hours - BU supports and recommends around 20 hours or part-time work as realistic alongside your studies.



Scholarships – UK/CI and ROI students

**BU Academic
Achievement
Scholarship***

£2,000

When you achieve **2:1** or above
(and equivalents),
September 2025 and January 2026 entry

*All taught full-time Postgraduate Taught courses are eligible, except for any distance learning courses. CPD, PGCert, PGDip and part-time programmes are excluded unless stated otherwise on our website. Applicants for the Postgraduate Diploma Legal Practice (LPC) and Graduate Diploma in Law (CPE) and eligible for the Academic Achievement Scholarship.

www.bournemouth.ac.uk/pg-scholarships



Scholarships – international students

BU Academic Achievement Scholarship*

When you achieve the equivalent of a UK Hons degree with **2:1** or above

£2,000

Sept 2025 and Jan 2026 entry

BU Academic Excellence Scholarship*

When you achieve the equivalent of a UK Hons degree with **2:1** or above

£4,500

Sept 2025 and Jan 2026 entry

*All taught full-time Postgraduate Taught courses are eligible, with the exception of any distance learning courses. CPD, PGCert, PGDip and part-time programmes are excluded unless stated otherwise on our website. Applicants for the Postgraduate Diploma Legal Practice (LPC) and Graduate Diploma in Law (CPE) are eligible for the Academic Achievement Scholarship.

www.bournemouth.ac.uk/pg-scholarships



Scholarships

BU Excellence in Sport Scholarship

Up to **£5,000**

Supporting elite athletes representing their sport at a national or junior level

BU Excellence in Music Scholarship

Benefits package worth
approximately **£600**
per year

Supporting outstanding musicians and singers who raise the profile of BU's performance-based output



www.bournemouth.ac.uk/pg-scholarships

It's going to be great...

- A wide variety of accommodation options, both on and off-campus and in halls of residence.
- Specific accommodation options for couples and families and/or those with additional needs.
- Good transport links to the university campuses from all sites
- Cycle storage
- Internet connection
- Laundry facilities
- Student parking very limited.

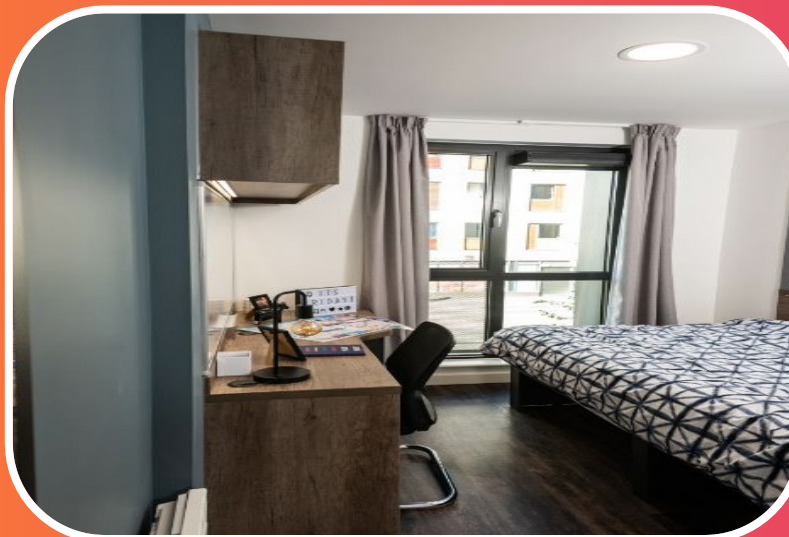
Guaranteed accommodation for September 2025 entry

See website for the terms and conditions.

Please note:
The accommodation prices
quoted in this presentation are
for the 2025/26 academic year.
For the latest information,
please refer to the BU website.

Accommodation that suits you

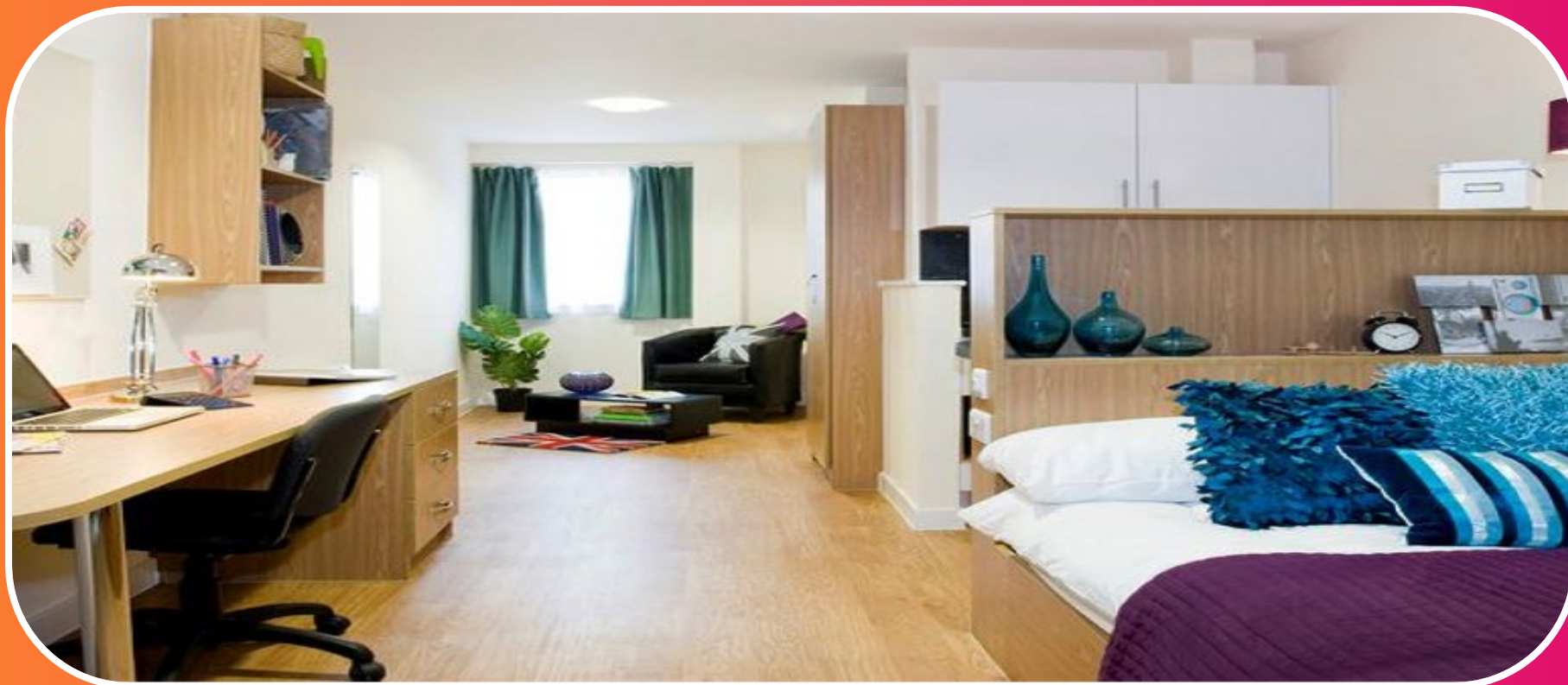
Shared flats from
£167.99 pw
50-week tenancy



Options shown: Chesil House from £168.81 pw, Bailey Point from £233.17 pw (includes bills, bus pass and ResLifeBU).
Other options online.

Accommodation that suits you

Studio flats from
£198.98 pw
50-week tenancy



Price stated – Chesil House studio 50-weeks (includes bills , bus pass and ResLifeBU) | Option shown: Dorchester House from £220.37 pw.

Getting moved in

Stage 1

When BU is your **firm** choice

- Register your interest in accommodation

Stage 2

Reserve your room

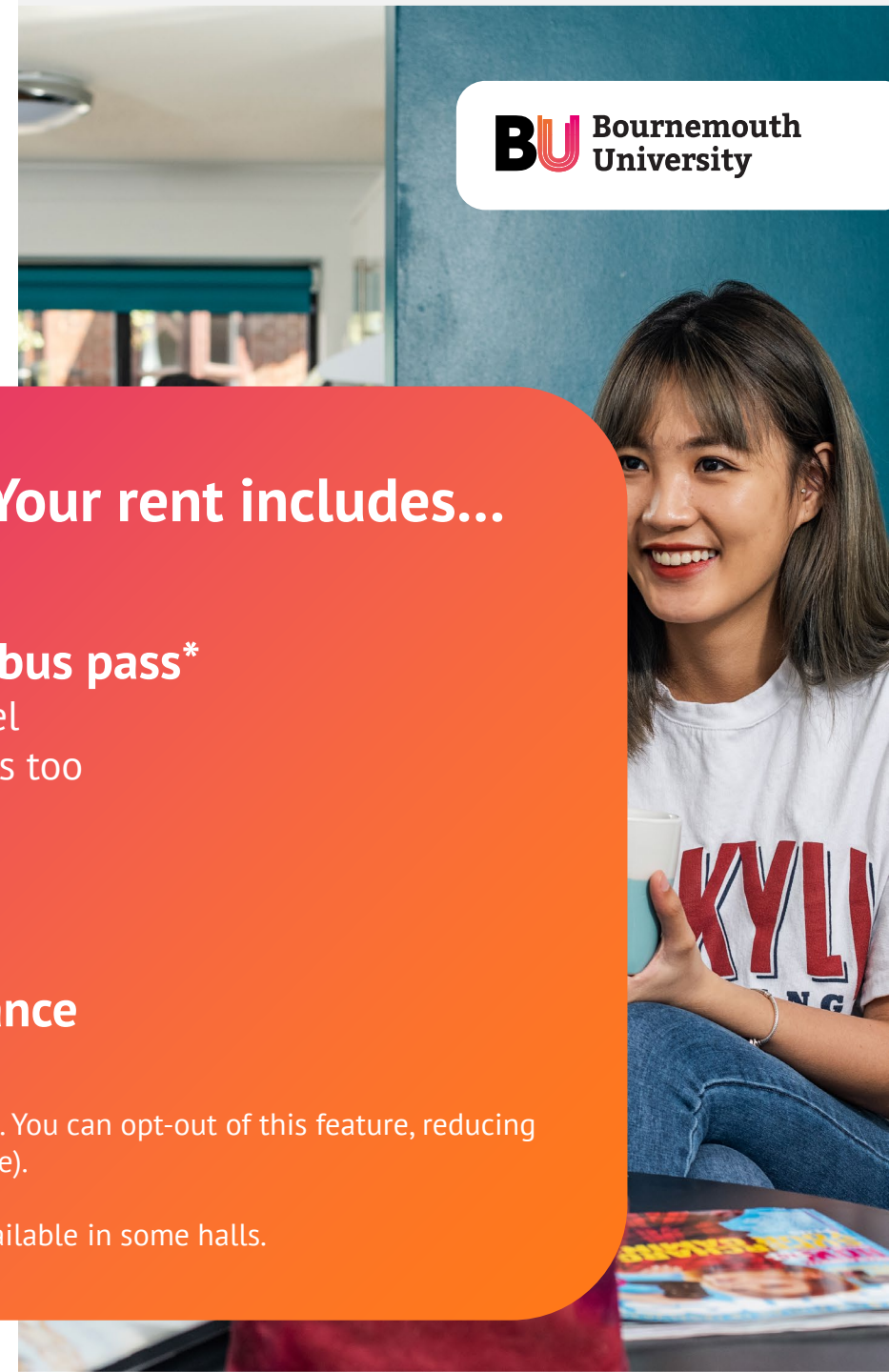
- UF – pay and sign to secure your room
- CF – wait for results before securing your room

We've got this covered. Your rent includes...

- ✓ **ResLifeBU programme**
- ✓ **12-month unlimited BU bus pass***
 - ✓ Covers all university travel
 - ✓ Includes some local buses too
- ✓ **Internet usage****
- ✓ **Bills** (gas, electric, water, sewerage)
- ✓ **Personal contents insurance**

*Providing unlimited travel on selected services. You can opt-out of this feature, reducing rental payment by £308 (2025/26 entry figure).

**Additional services/premium packages are available in some halls.



ResLifeBU - You're part of our community



Your skills

- Lifestyle – ‘Ready, steady, cook’, ‘Masterchef’, work/life balance, budgeting
- Study – CV workshops, placements support, Revision



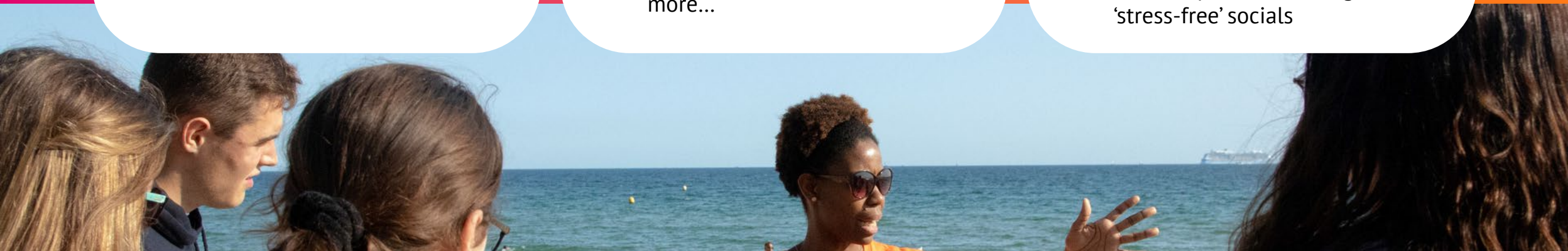
Your social life

- Organised activities & socials – Winter Ice Ball, Welcome BBQ, ‘Come dine with me’, ‘It’s a knockout’, Paddle boarding, cultural celebrations and more...



Your wellbeing

- Welfare Coordinators for all BU accommodation
- Integration with BU wellbeing services
- Workshops for wellbeing & ‘stress-free’ socials





**STUDENTS'
UNION**
BOURNEMOUTH UNIVERSITY

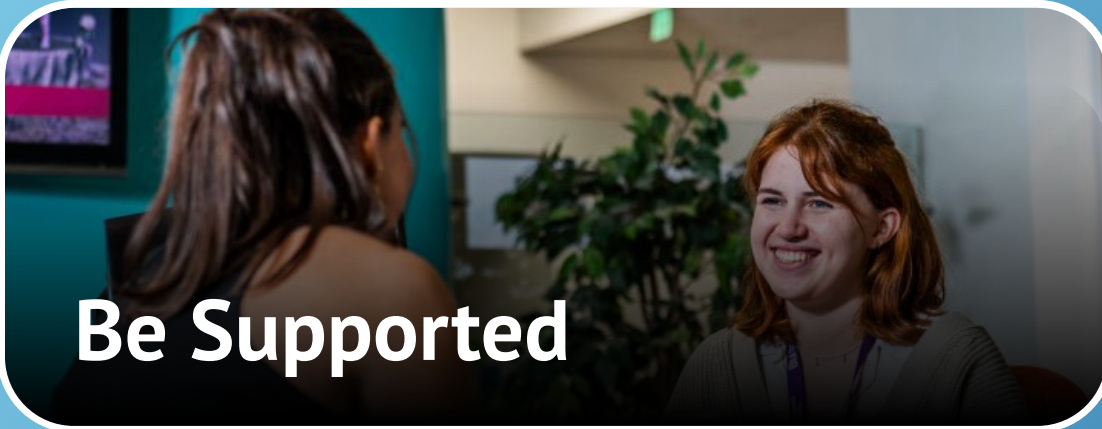
Your Students' Union



Be Represented



Be Involved



Be Supported



Be Social

Applying to BU

Prepare

- Prepare your application documents, such as:
 - Up-to-date transcript
 - Your most recent academic qualification
 - Your personal statement

Apply

- Go to **www.bournemouth.ac.uk/pg-courses**, choose the postgraduate course that you are interested in and click 'Apply now'. You will then be taken to our online application portal (myHub) to register an account, submit your application and upload the required application documents

Offer

- We aim to make you an offer within one month of a fully completed application. If your course requires an interview or additional selection measure, it may take a little longer.



**Fast track application option
for BU students and
graduates:**

www.bournemouth.ac.uk/fast-track



Contact us

📞 01202 961916

✉️ futurestudents@bournemouth.ac.uk

We've provided the latest information available at the time of delivery (March 2025).

For the latest information, visit our website: www.bournemouth.ac.uk