



**Bournemouth
University**

Level up and enhance your career prospects

Postgraduate study with Bournemouth University

#BUOpenDay
#BelongAtBU

- **A bit about BU**
- Why postgraduate study
- Postgraduate funding
- Accommodation
- Student experience

Why we love Bournemouth



Who are we

- Our vision - to be recognised worldwide as a leading university for inspiring learning, advancing knowledge and enriching society through the fusion of education, research and practice
- 18,000 students – 2,500 international students from across the world (130+ countries)
- Across two sites – Talbot Campus & Lansdowne Campus, and partner institutions

5th in the UK



Times Higher Education
Impact Rankings 2023



**World
University
Rankings**
2023 TOP 300

↑ 17 places in 2024 rankings (55th)



We're ranked in the top 50 in the world and 1st in the UK in the 2023 Times Higher Education (THE) Young University Rankings



**Times
Higher
Education**



Kate Adie CBE DL, BU Chancellor

Who we are



We offer incredible learning opportunities

- Live research projects
- Guest lectures



We are professionally orientated

- Accreditations
- Placements
- Working with industry



Our research makes a real difference

- Helping people live better for longer
- Contributing to the creative and cultural industries

94%

of our research was found to be internationally recognised (Research Excellence Framework, 2021)



Explore our story



Our university

95% of BU graduates would recommend us to prospective students

BU Alumni survey 2020, based on 1,195 respondents

92.5% of our postgraduate graduates are employed/in further study within 15 months of graduating

Graduate Outcomes Survey, 2020/21



Award winning graduates worked on Gravity, Inception & Avatar



More than **1,200** students undertook an international experience between 2017 and 2019

Campuses to be proud of



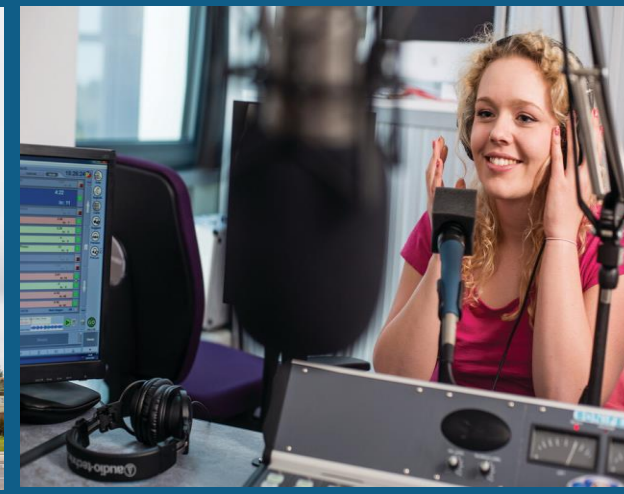
**See it for
yourself**
Visit our Virtual Tour
to see everything in
360°
[www.bmth.ac.uk/
virtual-tour](http://www.bmth.ac.uk/virtual-tour)



**Lansdowne Campus:
Bournemouth Gateway**



**Talbot Campus:
Poole Gateway**



• Why postgraduate study



Why postgraduate study?

PG Cert | PG Dip | MA | MSc | MBA

Ensuring you can **climb the ladder** with over 90 courses to choose from – a range of conversion and progression options to:

- Improve your career prospects
- Change your direction
- Acquire new skills and experience
- Explore a subject further
- Enter a particular profession/career pathway.

92.5%

of our students were employed/study 15 months after graduating

Graduate Outcomes Survey, 2020/21

Courses driven by the skills and experience employers demand...

- ✓ **communication skills**
- ✓ **work ethic**
- ✓ **research methods**
- ✓ **team working**
- ✓ **self-management**

Skills Development Programme

- Working collaboratively with academics and industry speakers to deliver our innovative Skills Masterclasses
- Providing you with Your Skills Development Area on Brightspace for up to date tailored learning content
- Recognising your extracurricular achievements alongside your studies through structured pathways



Jenna Darlow

Available
to all BU
students!



Applying to BU

1 Prepare

Prepare your application documents:

- Your up-to-date transcript (if you are currently studying) or your final transcript (if you have completed your last qualification)
- Your most recent academic qualification (e.g. Bachelor's degree if you are currently studying an undergraduate course)
- Your Personal Statement
- One academic reference (some courses require a professional reference too) – either contact details or a letter to upload (or professional reference if you left university over two years ago)
- Check out tips on how to apply here: www.bournemouth.ac.uk/pg-apply

2 Apply

Make your application to BU:

- Go to www.bournemouth.ac.uk/courses, choose the postgraduate course that you're interested in and click 'Apply now'. You will then be taken to our online application portal (myHub) to register an account, submit your application and upload the required application documents
- You can also apply for a BU scholarship at this point – visit www.bournemouth.ac.uk/pg-scholarships

3 Offer

BU aims to make you an offer within one week of a fully completed application. If your course requires an interview or additional selection measure, it may take a little longer.

- A conditional offer means you need to provide further evidence and your offer will contain full details of what is required
- An unconditional offer means you have met all of our academic entry requirements and you are ready to join us (subject to completing all your actions in myHub before enrolment)

Fast track application option for
current BU students and graduates:

www.bournemouth.ac.uk/fast-track

• Postgraduate funding



The cost of Postgraduate Study

Postgraduate loan of up to

£12,471

Non-income assessed
For September 2024 and
January 2025

- Course fees depend on the course you are studying and whether you are a home (UK) or International student
- Loan paid in **three instalments**
- BU offers scholarships
- **Find out more:** www.bournemouth.ac.uk/pg-funding

Paying it back

- Loan repayments will start only when you have finished your studies and earning £21,000 or over.

6%

Of your income above
£21,000 (before tax)

Repay alongside 9% of any existing undergraduate 'Plan 2' loan (15%).

Interest accrues on the loan from the moment you take it out, currently this is RPI% + up to 3%

INCOME		REPAYMENT		
Annual (before tax)	Monthly	Plan 2 loan	Postgraduate Loan	Total monthly repayment
£21,000	£1,750	£0	£0	£0
£23,000	£1,916	£0	£9	£9
£25,000	£2,083	£0	£19	£19
£27,295	£2,275	£0	£30	£30
£30,295	£2,525	£23	£45	£68

Funding your studies

Fee flexibility
Pay your fees in
two
instalments

**20% tuition fee
reduction for
BU graduates**

**10% student
family tuition
fee discount**

**BU Financial
Support Fund**
Up to £1,000
for
emergencies
(UK students only)

Building a funding portfolio

- **Charities, foundations and trusts**

- Provide bursaries & scholarships to students who need help studying in their field of interest - Economic hardship, academic excellence or subject specialism
 - Charities Digest
 - The Directory of Grant-Making Trusts (Directory of Social Change)
 - The Grants Register: the Complete Guide to Postgraduate Funding Worldwide (Palgrave Macmillan Ltd)
 - The Educational Grants Directory (Directory of Social Change)

- **Employer sponsorship**

- A win-win situation - you study for a qualification that will improve your ability to do your job and your employer benefits from a better qualified, productive and motivated employee
- Arrangements can be set-up with our finance team

www.postgraduatefunding.com

www.postgraduate-funding.com/gateway

Pin: 6199

Other funding

- **Disabled Students' Allowance** - If you have a disability, mental health condition, long-term health condition or specific learning difficulty
- **Grants**

International students in the UK:

- Visit the UK Council for International Student Affairs (UKCISA) at www.UKCISA.org.uk

- ✓ Be proactive about additional funding routes
- ✓ Clarify your own justification for postgraduate study to strengthen your application
- ✓ Bundle support to build a portfolio of funding that suits your needs



Part-time work

- CareersBU Service: job shop on campus
- On-campus opportunities
 - SUBU venues and shops
 - BU Student Ambassador
- Local part-time work and seasonal roles
- Temporary contracts

20 hours

BU supports and recommends around 20 hours or part-time work as realistic alongside your studies.



Scholarships – UK/CI and ROI students

BU Academic Achievement Scholarship*

£2,000

When you achieve **2:1** or above
(and equivalents),
September 2024 and January 2025 entry

Human Centred Artificial Intelligence Postgraduate Scholarship

£10,000

Tuition fee waiver for eligible
courses

September 2024 and January 2025 entry

*All taught full-time and part-time structured Postgraduate Taught courses are eligible, with the exception of any distance learning courses. CPD, PGCert, PGDip and part-time programmes are excluded unless stated otherwise on our website. Scholarships cannot be deferred.

www.bournemouth.ac.uk/pg-scholarships

Scholarships – International students

BU Academic Excellence Scholarship*

£3,750

When you achieve **2:1** or above
(and equivalents)

September 2024 and January 2025 entry

Bournemouth University – GREAT Scholarships 2024

£10,000

Tuition fee waiver
September 2024 entry

*All taught full-time and part-time structured Postgraduate Taught courses are eligible, with the exception of any distance learning courses. CPD, PGCert, PGDip and part-time programmes are excluded unless stated otherwise on our website. Scholarships cannot be deferred.

www.bournemouth.ac.uk/pg-scholarships



Scholarships

BU Excellence in Sport Scholarship

Up to **£5,000**

Supporting elite athletes representing
their sport at a national or junior level

BU Excellence in Music Scholarship

Benefits package worth

up to **£600**

per year

Supporting outstanding musicians and
singers who raise the profile of BU's
performance-based output

www.bournemouth.ac.uk/pg-scholarships

● Accommodation



It's going to be great...

- A wide variety of accommodation options, both on and off-campus and in halls of residence.
- Specific accommodation options for couples and families and/or those with additional needs.
- Good transport links to the university campuses from all sites
- Cycle storage
- Internet connection
- Laundry facilities
- Student parking very limited

**Guaranteed
Accommodation
for September 2024
entry**
See website for all the
details.

Please note:

The accommodation prices quoted in this presentation are for the 2024/25 academic year.

Accommodation that suits you

Shared flats from

£156.50

pw

50-week tenancy



Options shown: Chesil House from £162.92 pw, Bailey Point from £225.08 pw (includes bills, bus pass and ResLifeBU).

Other options online

Accommodation that suits you

Studio flats from

£192.03

pw

50-week tenancy

Getting moved in

Stage 1 – when BU is your **firm choice**

Register your interest in accommodation

Stage 2 – **Reserve your room**

UF – pay and sign to secure your room
CF – wait for results before securing your room

We've got this covered. Your rent includes...

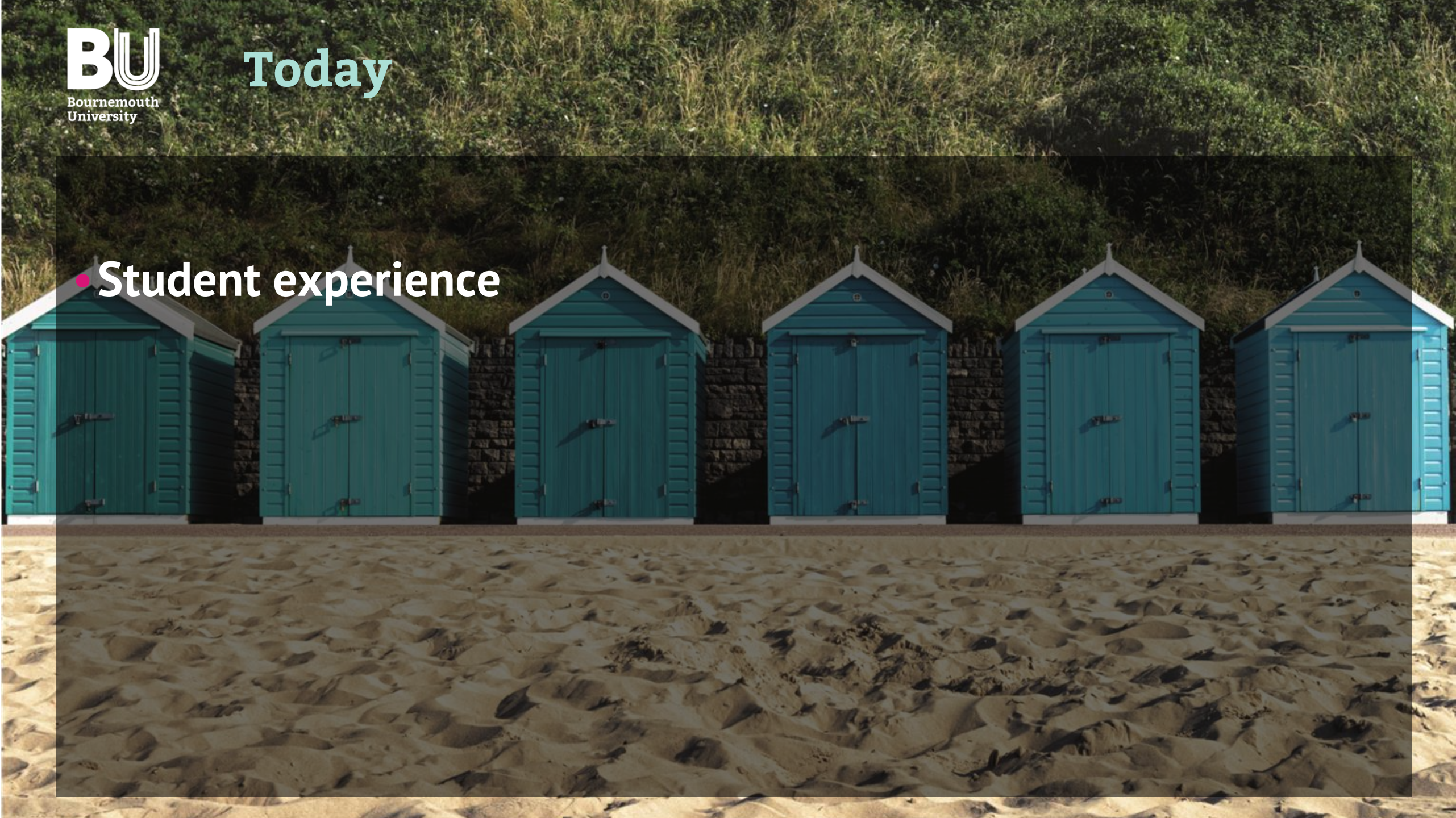
- ✓ **12-month unlimited BU bus pass***
 - ✓ Covers all university travel
 - ✓ Includes some local buses too
- ✓ **Internet usage****
- ✓ **Bills** (gas, electric, water, sewerage)

*Providing unlimited travel on selected services. You can opt-out of this feature, reducing rental payment by £285 (2023/24 entry figure).

**Additional services/premium packages are available in some halls.

**Accommodation
guarantee
for September
2024 entry**

• Student experience



ResLifeBU - You're part of a community



Your skills

- **Lifestyle** – ‘Ready, steady, cook’, ‘Masterchef’, work/life balance, budgeting
- **Study** – CV workshops, placements support, Revision



Your social life

- Organised activities & socials – Winter Ice Ball, Welcome BBQ, ‘Come dine with me’, ‘It’s a knockout’, Paddle boarding, cultural celebrations and more...



Your wellbeing

- Welfare Coordinators for all BU accommodation
- Integration with BU wellbeing services
- Workshops for wellbeing & ‘stress-free’ socials

Support and wellbeing

- AskBU – general support
- Additional Learning Support
- On-site childcare facilities
- Careers advice & MyCareerHub
- Faith & Reflection Service
- Subject librarians & Library experts
- On-site Police team and personal safety events
- Out of hours Welfare Duty Officer
- Student Wellbeing team
- Student Advice (Students' Union)
- ResLifeBU (support in accommodation)



Be represented



Be involved



Be supported



SUBU COMMUNITY

Be social



Let our students
tell you their story
www.bournemouth.ac.uk/student-blog





**Bournemouth
University**

Thank you for listening

Contact us: 01202 961916
futurestudents@bournemouth.ac.uk

We've provided the latest information
available at the time of delivery (March 2024).

For the latest information, visit our website:
www.bournemouth.ac.uk