



# Postgraduate Open Evening

**Postgraduate Research degrees at BU**



# Why BU?



## To learn is to change

Be part of a learning community that strives to make an impact on our world, for a more sustainable, inclusive and healthy society.



## Two campuses

Talbot Campus & Lansdowne Campus are home to our teaching & faculties. Our sports activities are based at Chapel Gate, and we work with a number of partner institutions.



## One community

17,000 students, of which 2,500 are from over 130 countries.



## Many partners

From AFC Bournemouth to University Hospitals Dorset, and universities across the globe, BU is place of opportunity.

**89%**

of graduates in work  
or further study

HESA Graduate Outcomes 2022/23



**21<sup>ST</sup>**

for Research Quality



**8<sup>TH</sup>**

in the UK and 59th  
in the World



**1<sup>ST</sup>**

for Mental Health and  
Wellbeing Support



An aerial photograph of a coastal town, likely in New England, featuring a long wooden pier extending into the blue ocean. The town is built on a slight rise, with various buildings and greenery visible. The sky is clear and blue. The text "NATURALLY OPEN" is overlaid in large, white, bold, sans-serif capital letters in the center of the image.

**NATURALLY  
OPEN**

# What we offer



## Professionally orientated degree

- Professional accreditations
- Placements
- Working with industry



## Incredible learning opportunities

- Live research projects
- Guest lectures
- Study abroad



## Research that makes a real difference

- Improving health & wellbeing
- Building environmental resilience
- Leading innovation in creative technologies
- Turning digital and AI research into industry impact

**94%**  
of research  
rated as  
internationally  
-recognised  
or above\*

\*Research Excellence Framework, 2021



# Our campuses



Campuses to be proud of



Lansdowne  
Campus

Campuses to be proud of

# Facilities to be proud of



# Sustainability at BU



**2000+**

solar panels have enabled us to avoid releasing over 550 tonnes of CO<sub>2</sub>e



**Joint 1st**

for SDG 12 Responsible Consumption and Production.\*



**Joint 39th in the world**

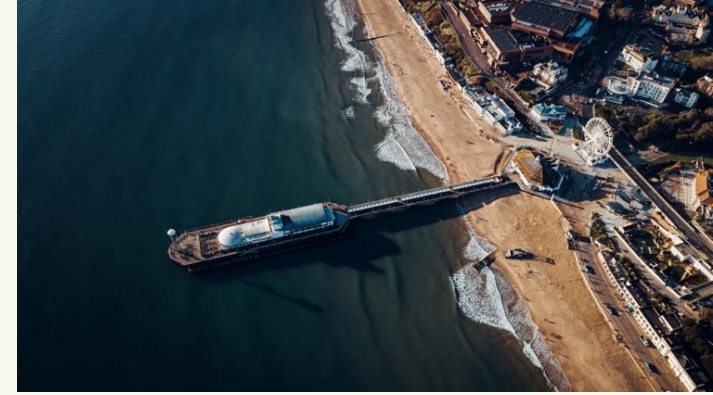
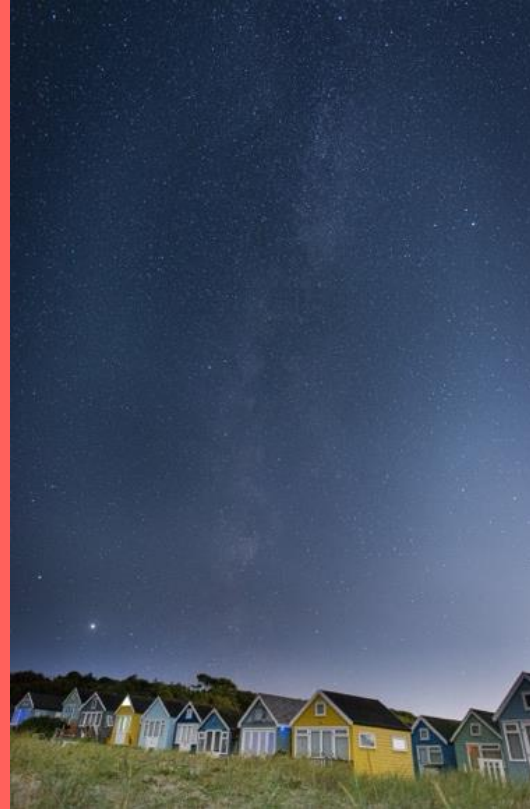
For our contribution to the UK Sustainable Development Goals.\*



**Refill campus**

Use your water bottle at one of our 45 refill points on campus.

# Why you'll love Bournemouth





**12km of award-winning golden sandy beaches**



**Thriving nightlife and student scene**



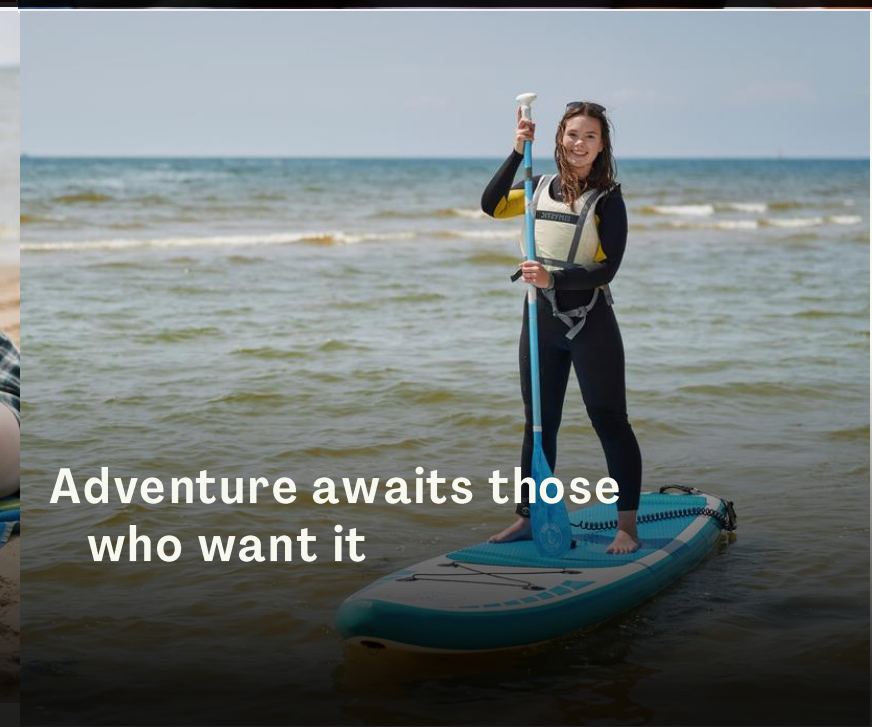
**Socialise in style**



**Beautiful town centre with stunning green spaces**



**Close-knit student community**



**Adventure awaits those who want it**



# Research at BU

# Research at BU

## Our students are

a key part of the research we conduct, co-creating knowledge with us and playing a crucial role in everything that we do.

## At BU our

research environment supports the research capacity and capability of staff at all stages of their career.

## Our research culture is

ambitious, inclusive, and innovative, focusing on the societal impact of our research and the co-creation of new knowledge with our students.

**TOP 3<sup>RD</sup>**

in the UK for  
Research Power

**REF** Research  
2021 Excellence  
Framework

**21<sup>ST</sup>**

for Research Quality

**THE** World  
University  
Rankings 2026

**41<sup>ST</sup>**

overall in the UK

**THE** World  
University  
Rankings 2026

# Our research strengths

- ✓ Helping people live better for longer.
- ✓ Helping protect and preserve a sustainable environment.
- ✓ Preparing for and recovery from crisis.
- ✓ Challenging marginalisation, misinformation and under-representation.
- ✓ Helping creative industries and cultural heritage to thrive.
- ✓ Using our expertise to be a catalyst for growth, boosting skills and advancing the region.



# What is a research degree?

## Postgraduate Taught Master's degree (PGT)

- ✓ Like an undergraduate degree
- ✓ Complete a series of units
- ✓ Follow a set timetable
- ✓ Study independently in your own time
- ✓ Lecturers will lead you through the course

## Postgraduate Research degree (PGR)

- ✓ More independent in nature
- ✓ No timetabled units or regular teaching sessions
- ✓ Focus on a single, in-depth research project
- ✓ Supervised by experts
- ✓ Responsibility for your work is on you

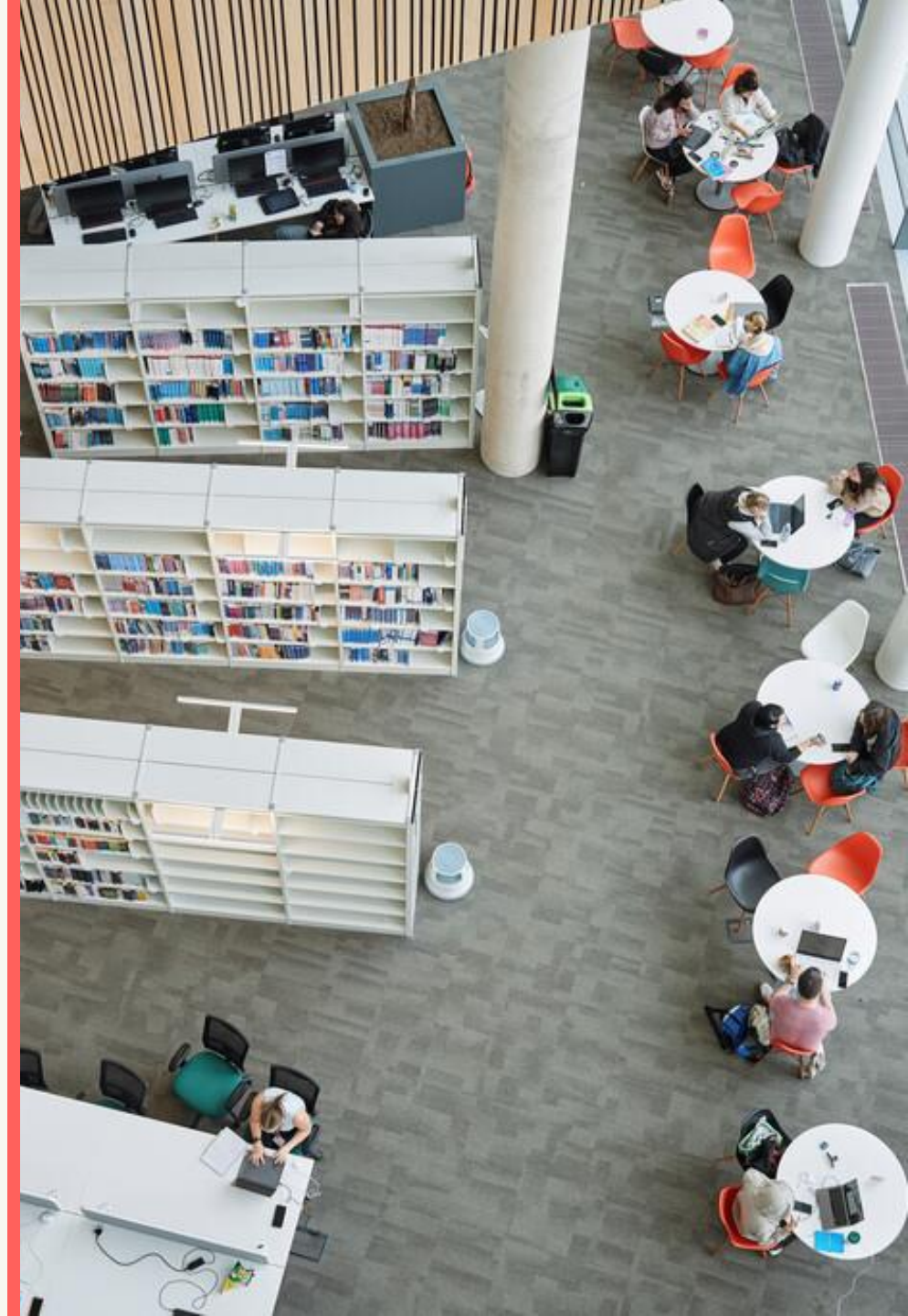
# What research degrees can you do?

✓ Master's by Research (MRes)

✓ Master of Philosophy (MPhil)

✓ Doctor of Philosophy (PhD)

✓ Professional Doctorates (Eg. EdD)



# PGR students in our faculties

**Faculty of Media,  
Science & Technology**

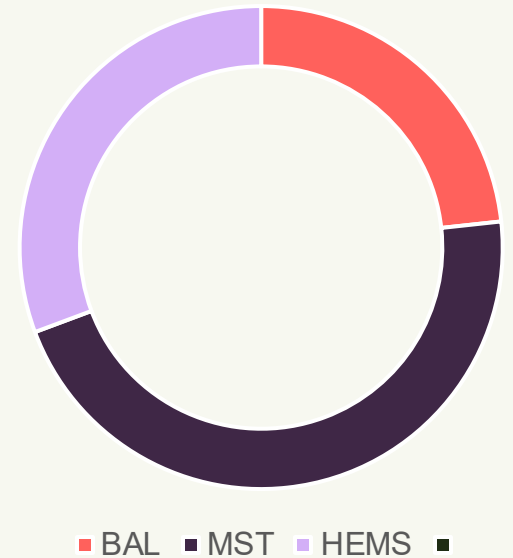
**267  
Students**

**Faculty of Business  
& Law**

**135  
Students**

**Faculty of Health,  
Environment & Medical  
Sciences**

**178  
Students**



# What disciplines can I research? Part 1.



**Accounting, Finance & Economics**



**Business & Management**



**Computing & Informatics**



**Design & Engineering**



**Disaster Management**



**Education**



**English & Communication**



**Health**

# What disciplines can I research? Part 2.



**Law & Criminology**



**Life & Environmental Sciences**



**Marketing**



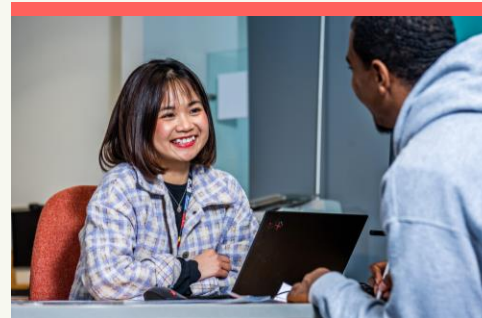
**Media Production**



**Politics**



**Psychology**



**Social Work**

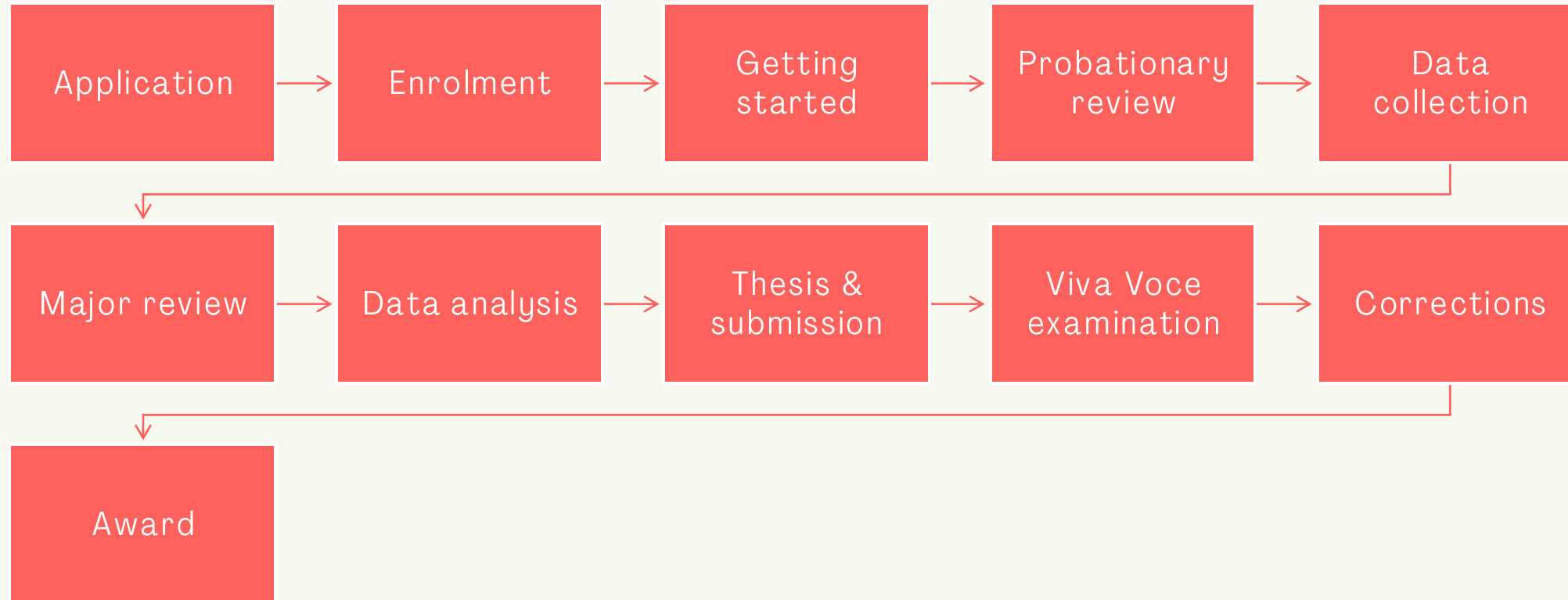


**Sport**



**Tourism & Hospitality**

# What is the Research Degree process?



The process involves different research steps monitored by periodic reviews and regular supervisory engagement.

# Dedicated PGR support

## Your faculty

✓ Academic supervision

✓ Progression monitoring

✓ Pastoral support

✓ Research culture & community

✓ Resources

## Doctoral College

✓ Overarching policy guidance

✓ Research Development Programme

✓ Administrative support

✓ Research culture & community

## BU

✓ Academic services

✓ Student services

✓ IT services

✓ SUBU



# Research culture & community



**Researcher development**



**Coffee mornings**



**Annual PGR conference**



**PGR society**



**Faculty research seminars**



**Research centres**



Settling in sessions



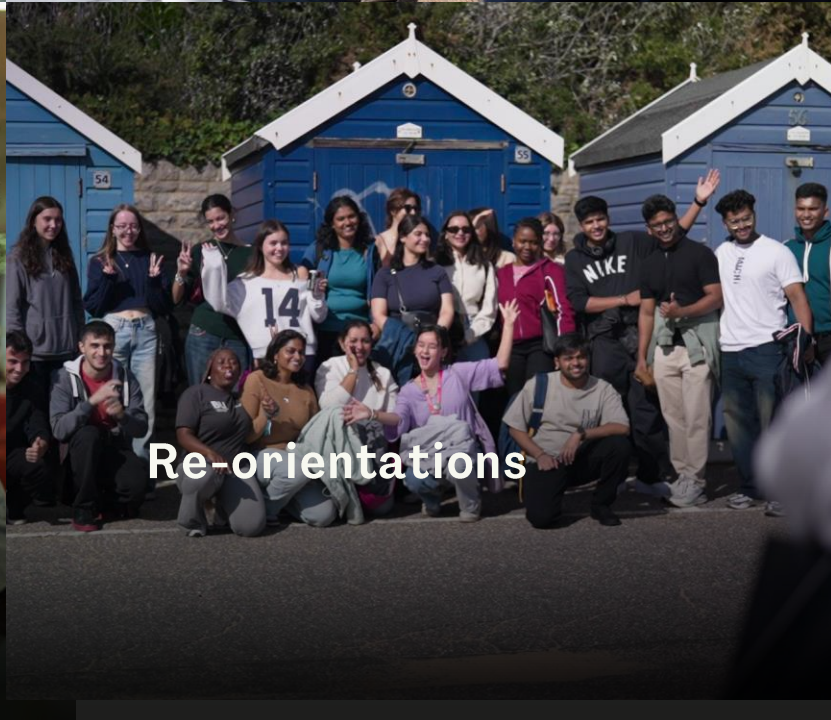
Peer support units



Faculty blogs



Faith & reflection



Re-orientations



Research ethics panels



# Entry requirements

# Entry Requirements

## Master's by Research (MRes) and Master of Philosophy (MPhil):

**A first or upper second class (2:1) honours UK Bachelor's degree**, or overseas equivalent, in a discipline which is appropriate to the proposed research.

## Doctor of Philosophy (PhD):

**A first or upper second class (2:1) honours UK Bachelor's degree**, or overseas equivalent, in a discipline which is appropriate to the proposed research, **or a UK Master's degree**, or overseas equivalent, in a discipline which is appropriate to the proposed research.

## English language:

Candidates for whom English is not their first language must have an IELTS (Academic) score of 6.5 minimum (with a minimum 6.0 in each component, or equivalent).



# Fees & funding

# Fees & Funding

## 2025/2026 fees

✓ Full-time home: £4,863

✓ Part-time home: £2,432

✓ Full-time overseas (lib): £20,000

✓ Full-time overseas (lab): £23,000

✓ Completion status: £600

## Your funding options

✓ Self-funded

✓ Externally funded (Eg. employer)

✓ BU funded studentship

✓ Externally funded studentship

✓ Postgraduate loan (student finance)



Next steps

# When can I apply?

**September intake  
application  
deadline:**

**16 June**

**January intake  
application  
deadline:**

**31 October**

**April intake  
application  
deadline:**

**31 January**

# Next steps

Identify your area of interest



Contact a potential supervisor



Develop your research proposal



Submit your online application



Prepare for your interview



# Thank you! Any questions?



# Contact us



[PGRadmissions@bournemouth.ac.uk](mailto:PGRadmissions@bournemouth.ac.uk)



+44 (0)1202 965069

