



**Bournemouth
University**

PG Open Evening: Postgraduate Research Degrees @ BU

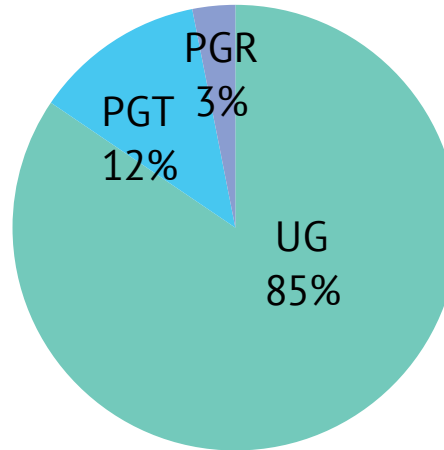
Dr Fiona Knight, Head of Doctoral College

Adriana Manova & Grace Karuna, Research Administrators

March 2024



- 18,000 students
- >15,000 UG students
- >2,000 PGT students
- >550 PGR students



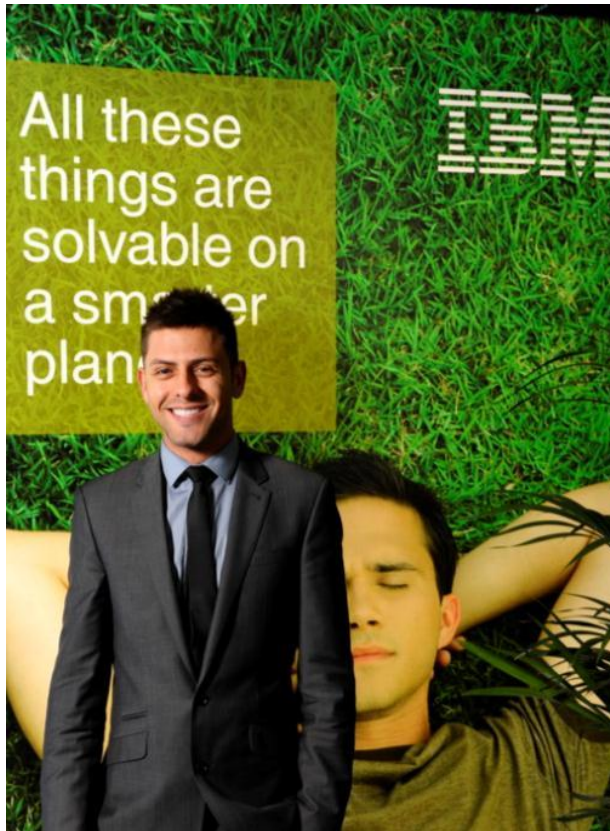
- 2,500 international students
- 130+ countries

- Four faculties across two main sites – Talbot and Lansdowne Campus - plus Partner Colleges



Innovative educators

- Learning resources
- Engaging with you
- Connected and accessible



Professionally orientated

- Industry-engaged
- Globally minded



Research active & informed

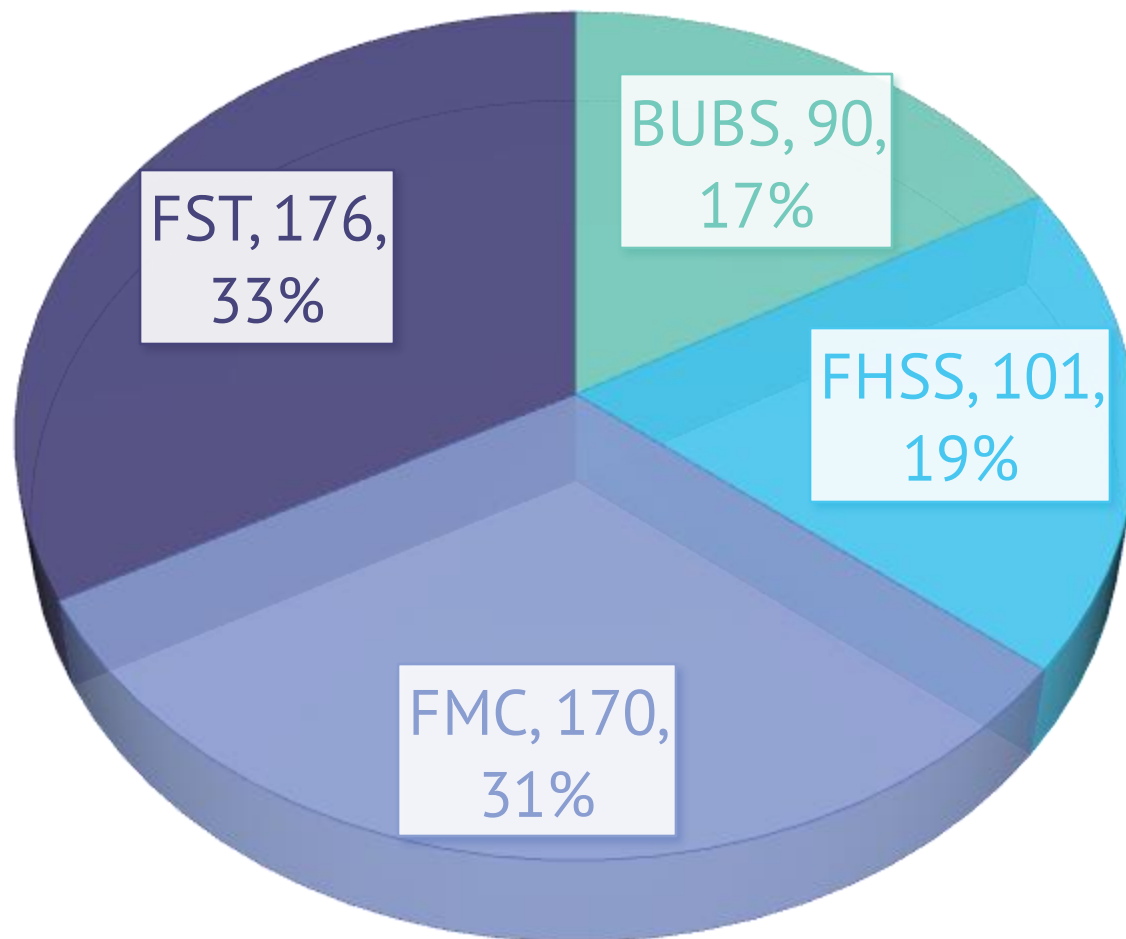
- Meaningful output
- Engaged with students and community

Research at BU



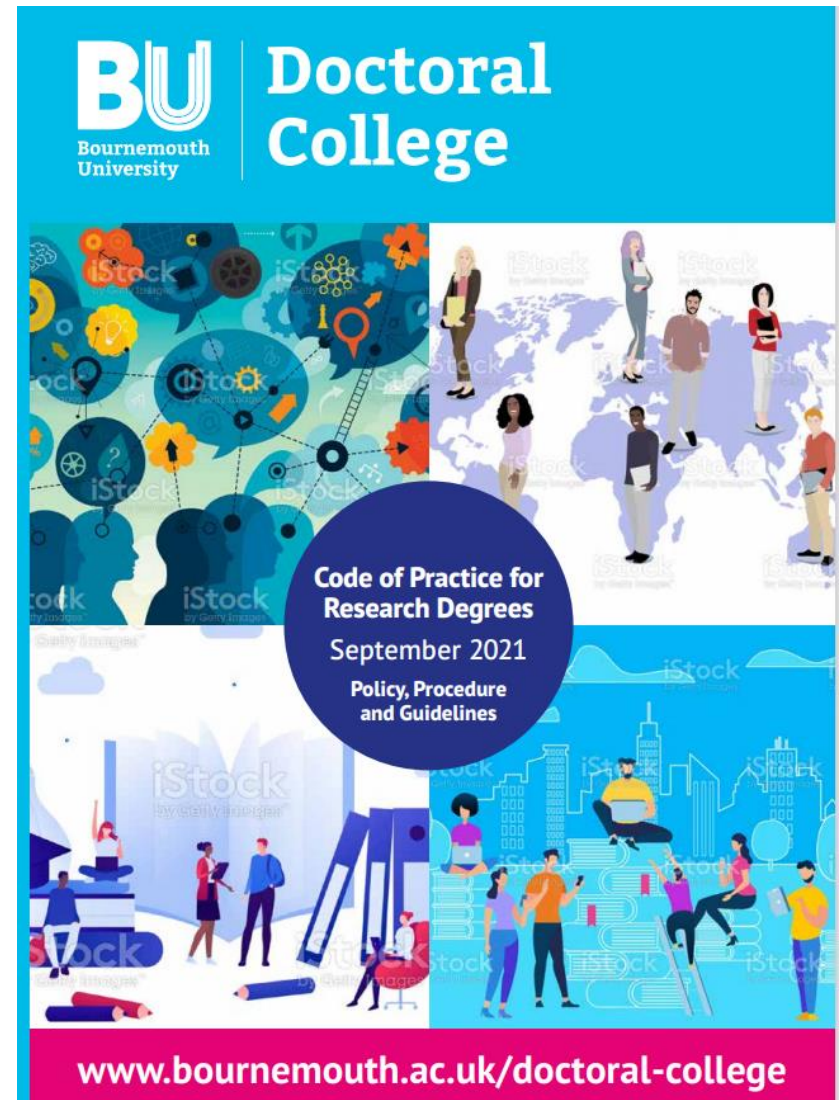
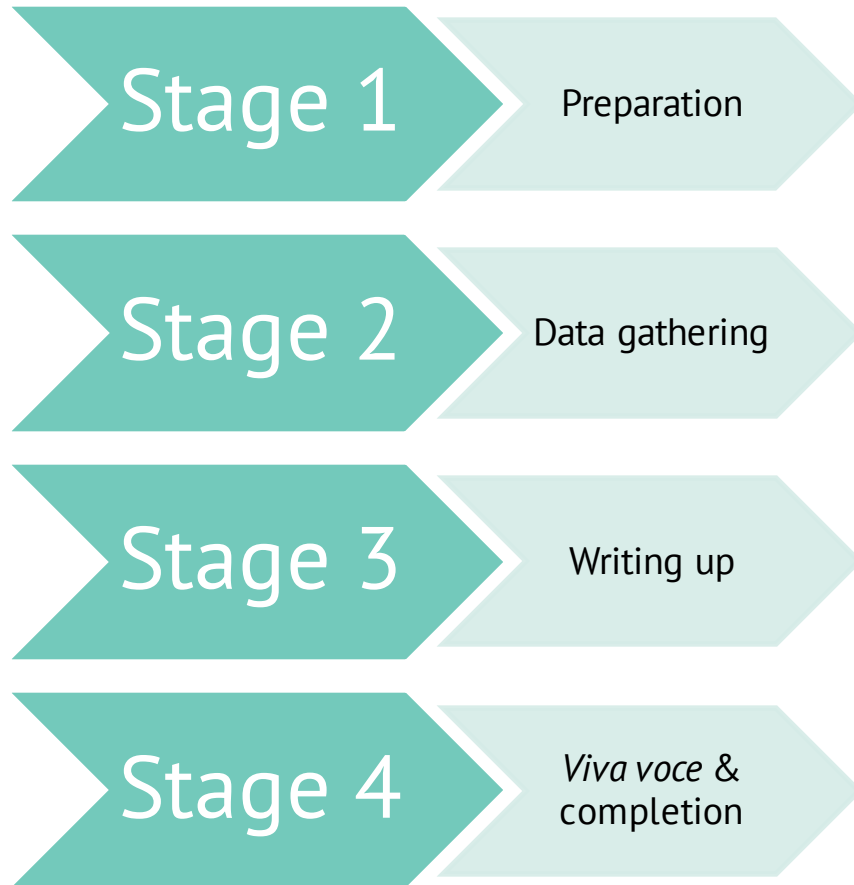
- Our students are a **key part of the research** we conduct, co-creating knowledge with us and playing a crucial role in everything that we do.
- At BU our **research environment** supports the research capacity and capability of staff at all stages of their career.
- Our **research culture** is ambitious, inclusive and innovative, focusing in particular on the societal impact of our research and the co-creation of new knowledge with our students.

Postgraduate Researchers at BU



-

Key stages of a research degree



Faculty

Academic Supervision:

Regular meetings; timely feedback

Progression Monitoring:

Probationary, Major & Re-Enrolment Reviews; *Viva Voce* Examinations

Pastoral Support:

Departmental PGR Leads;
Postgraduate Research Administrators

Research Culture & Community:

Seminars, Conferences, Development;
Faculty Reps

Resources:

Office Space; IT Equipment;
Laboratory access; etc.

Doctoral College

Overarching Policy Guidance:

Codes of Practice; Academic
Procedures; Administrative Processes

Research Development Programme:

Seminars; Workshops; Masterclasses;
Online Resources; Brightspace

Research Culture & Community:

Regular Newsletters; Facebook;
Annual Conference, Social Events;
Research Hu

Administrative Support:

Admissions; Enrolment; *Viva Voce*
Arrangements; Conferment

BU

Academic Services:

Library, Study Skills; Graduation

Student Services:

Health & Wellbeing, Additional
Learning Support; General Advice;
SportBU; Faith & Reflection

IT Services:

Hardware and software support

SUBU:

Representations; General Advice;
Networking; Clubs and Societies

82%
overall satisfaction

91%
“my supervisor has the skills & subject
knowledge to support their research”

81%
“my supervisor has
helped me identify
my training &
development needs”

90%
“my skills in applying research
methodologies, tools & techniques have
developed during my programme”

90%
“my skills in critically analysing & evaluating
findings & results have developed during my
programme”

90%
“my supervisor
provides helpful
feedback”

85% “I have
appropriate access to
IT resources and
facilities when on
campus”

79%
“I feel better
prepared for their
future career”

41%
response rate

Research Community & Culture

Researcher Development

Research Centres

Faculty Conference

Annual PGR Conference

PGR Representatives

Faculty Research Seminars

Virtual Poster Exhibition

PGR Society

Coffee Mornings

Settling In Session

Supervisor PGRs

Faculty Blogs

Re-Orientations

PGR Peer Support Units

Research Ethics Panels

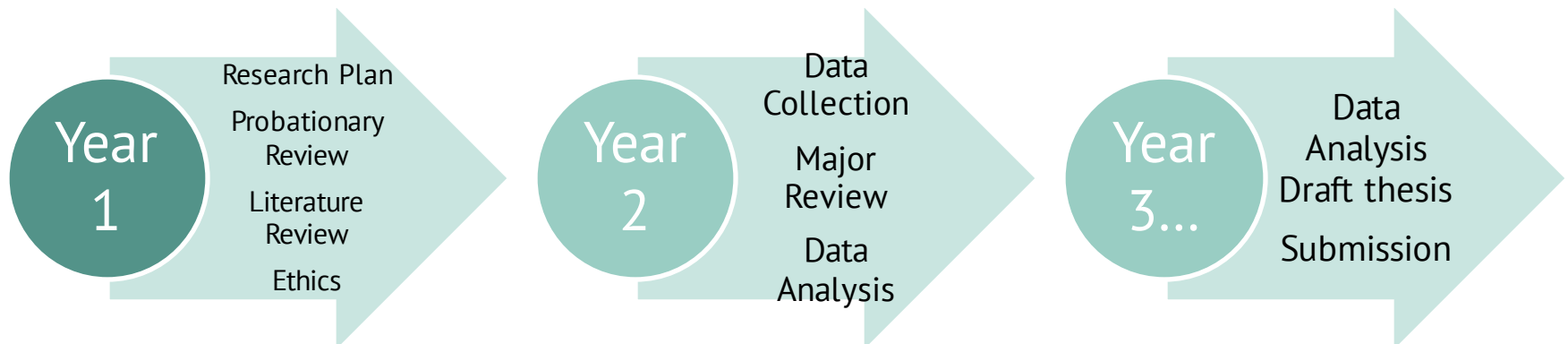
Blog Posts

Research Institutes

Faith & Reflection

Research Degree Timeline

- This is individual to you and is dependent on your:
 - Programme of study
 - Mode of attendance
 - Start date
- You will be provided with key dates by your PGRA
 - Also can be found in ProGress
- Top Tip: diarise deadlines now and plan work accordingly – time flies...!



Monitoring Progression – MRes (FT)

18 months of enrolment

12 months of studentship stipend

AY 1

AY2

3

6

9

12

15

18

Probationary Review

Submission of Thesis

Re-Enrolment Review

Viva Voce Examination

Award

Monitoring Progression – PhD (FT)

48 months of enrolment

36 months of studentship stipend

AY 1

AY 2

AY 3

AY4

3

6

9

12

15

18

21

24

27

30

33

36

39

42

45

48

Probationary Review

Re-Enrolment Review

Major Review

Re-Enrolment Review

Submission of Thesis

Re-Enrolment Review

Viva Voce Examination

Award

Research Degree Rollercoaster

The “psychological” stages



- **Fees for 2024 -25**

- Full-time Home/EU: £4,712
- Part-time Home/EU: £2,356
- Full-time Overseas: £19,000 (Lib)
- Full-time Overseas: £21,000 (Lab)
- Completion Status: £600



- **Funding Options**

- Self-funded
- Externally funded
(e.g. employer, sponsor)
- BU Funded
(e.g. studentship)
- Postgraduate Loan
(Student Finance)

Next Steps

1.

- Identify your area of interest

2.

- Contact a potential supervisor

3.

- Develop your research proposal

4.

- Submit an online application

6.

- Prepare for your interview

Contact us

01202 965069

PGRadmissions@bmth.ac.uk