

- BSc (Hons) Psychology with Forensic Investigation
- BSc (Hons) Psychology with Counselling
- BSc (Hons) Psychology in Education
- BSc (Hons) Psychology



Careers in Psychology

All our psychology degrees are accredited by the British Psychological Society (BPS), preparing graduates for a wide range of careers—not just in psychology—thanks to the diverse and highly transferable skills developed throughout the course.



Education

Teaching Assistant

As a teaching assistant (TA), you'll support pupils in their educational, emotional and social development either individually, in groups or as a whole class. You'll also support the teacher by undertaking duties that will free up their time for teaching, such as preparing the classroom for lessons, making resources and creating displays of children's work.

Early Years Teacher

Early years teachers (EYT) work in settings including nurseries and preschools and play an important role in the early development of young children. As an EYT, you'll work with children aged 0-5 years, nurturing and supporting their learning and development.

Teacher - Primary School

To be a successful primary school teacher, you need a passion to inspire young minds and a commitment to ensuring that every child achieves their potential. As a primary school teacher, you'll develop schemes of work and lesson plans in line with curriculum objectives. You'll facilitate learning by establishing a relationship with pupils, keeping your learning resources organised and creating a positive learning environment in the classroom.

Teacher - Secondary School

As a secondary school teacher, you'll teach pupils aged 11 to 16 (or up to 18 if the school has a sixth form). Specialising in a particular subject, you'll plan, teach and assess lessons in line with curriculum objectives.

Further Education Teacher

Further education (FE) teachers teach a range of subjects to learners aged 16 and over, as well as work-related learning to students aged 14 to 16.

Educational Psychologist

As an educational psychologist, you'll work collaboratively with children and young people from birth to 25 years old, alongside families and schools. You will support children with learning, social or communication difficulties, and help schools to meet the needs of young people who are finding it difficult to manage their emotions.

Education Mental Health Practitioner

Education mental health practitioner is a growing career that helps children and young people to get early intervention for mental health difficulties.

Education Consultant

As an education consultant, you'll use your experience in learning, teaching and assessment to help develop the curriculum, implement new strategies to improve education programmes, or work with organisations and learners to identify and support their specialist needs.

Careers Advisor

As a careers adviser, you can work in a variety of fields and may specialise in several areas. It's likely you'll work in a generalist role, helping people from many backgrounds and giving impartial advice regarding routes into multiple different careers and industries.

Higher Education Lecturer

Higher education (HE) lecturers teach academic or vocational subjects to undergraduate and postgraduate students aged 18 and over. As an HE lecturer, you'll need expertise in your subject area in order to teach students. Teaching methods include lectures, seminars, tutorials, practical demonstrations, fieldwork and e-learning.

Further studies

None

Early Years Initial Teacher Training (EYITT) programme

Postgraduate Certificate in Education (PGCE)

Postgraduate Certificate in Education (PGCE)

Postgraduate Certificate in Education (PGCE)

BPS-accredited Doctorate in Educational Psychology

Postgraduate Diploma

Postgraduate Certificate in Education (PGCE) is advisable

Postgraduate Diploma/Master's in Career Development

Postgraduate Certificate in Education (PGCE)



Education (continued)

Play Therapist

Play therapists use play as a communication tool to help children understand their world and deal with emotional distress and trauma.

Special Educational Needs Teacher

As a special educational needs (SEN) teacher, you'll work with children and young people who need extra support, or require an advanced programme of learning in order to reach their full educational potential. You may work with pupils who have physical disabilities, sensory impairments (i.e. hearing or visual), speech and language difficulties, learning difficulties, such as dyslexia, autism, social, emotional and mental health needs, or those with a combination of these difficulties.

Further studies

Accredited postgraduate qualification from either the British Association of Play Therapists (BAPT) or Play Therapy UK (PTUK)

PhD in a related area

Mental & Physical Health

Clinical Psychologist

Clinical psychologists assess and treat clients with a range of mental or physical health issues, conditions and disorders. Working in partnership with your clients, you'll diagnose, assess and manage their conditions.

Counselling Psychologist

As a counselling psychologist, you'll use psychological theory and research in therapeutic work to help clients with a range of difficult life issues and/or mental health conditions. Clients can include children, adults, families, couples and groups.

Psychological Wellbeing Practitioner

Psychological wellbeing practitioners assess and support adults who are experiencing common mental health difficulties, such as mild to moderate symptoms of depression, anxiety and low mood. You'll work within NHS Talking Therapies for Anxiety and Depression (formerly IAPT). You'll provide a range of low-intensity, cognitive behavioural therapy (CBT)-based interventions that will help your patients manage their own recovery.

Counsellor

Counsellors help people to identify problems in their lives, allowing them to reflect on what is happening to them and consider alternative ways of doing things. You'll actively listen to clients, offering them time, empathy and respect to talk about issues and problems, with the aim of reducing confusion and increasing their ability to cope with challenges, or to make positive changes to their lives.

Life Coach

As a life coach, you'll help clients identify their personal strengths and areas for development. In a similar way to counselling, you'll develop ongoing, confidential, one-to-one relationships with clients, but where counselling focuses on deep emotional healing, your concern is in helping clients plan positive goals.

Psychotherapist

As a psychotherapist, you'll help clients explore and express their thought processes, feelings and behaviour. Sessions with clients can cover a range of issues. You'll use psychotherapeutic approaches to help clients understand the issues they're facing and find new ways to alleviate and deal with distress. You'll also support them to make positive changes to the way they think and behave.

Neuropsychologist

As a neuropsychologist, you will be an expert in how brain injuries and conditions affect behavior, mood and thinking skills. You'll perform neuropsychological evaluations to assess how the brain and mind are working and suggest treatment plans.

Further studies

BPS Doctorate in Clinical Psychology

BPS-accredited Qualification in Counselling Psychology (QCoP)

Postgraduate Certificate

British Association for Counselling and Psychotherapy (BACP) courses are advisable

None

UKCP, BACP or BPC-recognised postgraduate qualification

Accredited postgraduate training for eligibility to apply for status as a Chartered Psychologist through either a Clinical or Educational training route. You will also need to complete the BPS Qualification in Clinical Neuropsychology



Mental & Physical Health (continued)

Mental Health Nurse

Mental health nurses support people with mental health conditions through their recovery process, helping them improve their quality of life and live independently. You'll support not only your patients but their support networks, such as relatives or close friends, as well.

Speech and Language Therapist

Speech and language therapists help patients of all ages with varying levels of speech, language and communication problems, or difficulties in swallowing, drinking or eating. You'll provide treatment, care and support to babies, children, adults and elderly people with a range of conditions.

Assistant Psychologist

Assistant psychologists play a key role in supporting licensed psychologists by working closely with them to deliver high-quality healthcare for patients. This is achieved through strong teamwork and communication between the assistant psychologist and psychologist, as the assistant psychologist helps in areas like research and patient observation to improve the clinic's service quality.

Occupational Psychologist

Occupational psychologists use their understanding of how people behave at work to improve productivity, job satisfaction and effectiveness within an organisation. You'll apply psychological knowledge, theory and practice to the workplace. Providing support on an individual or organisational basis, you'll address issues such as performance, culture and change.

High Intensity Therapist

High intensity therapists support individuals who are experiencing a range of mental health conditions, in particular moderate to severe depression and anxiety disorders.

Further studies

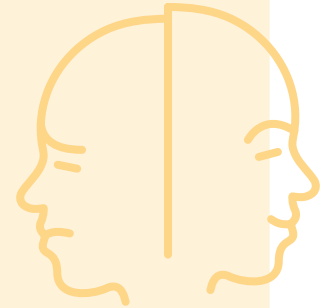
Postgraduate degree, such as MSc Nursing, which is certified by the Nursing and Midwifery Council (NMC)

HCPC-approved postgraduate degree in speech and language therapy

None

BPS-accredited Master's in Occupational Psychology and (BPS) Stage 2 Qualification in Occupational Psychology (QOP) (Doctorate level)

British Association for Behavioural and Cognitive Psychotherapies (BABCP) Level 2 accredited Postgraduate Diploma in high intensity cognitive behavioural therapy



Criminal Justice

Forensic Psychologist

Your work as a forensic psychologist will mainly relate to the assessment and treatment of criminal behaviour. You'll work not only with prisoners and offenders, but with other professionals involved in the judicial and penal systems, as well as with victims of crime. You'll be heavily involved in providing research-based evidence to develop policy and working practices, to build a better understanding of offending behaviour and offenders' motivations. You will also give evidence in court and advise parole boards and mental health tribunals. Your work will help to rehabilitate prisoners, reduce the risk of reoffending and lead to a safer society.

Border Force Officer

Border Force officers are on the frontline of protecting the UK's borders, carrying out crucial immigration and customs checks.

Probation Officer

As a probation officer, you'll work with offenders in courts, in the community and in custody to make communities safer and to integrate those released from prison back into the community. This involves interacting with offenders, victims, police and prison service colleagues on a regular basis.

Police Officer

Police officers protect the public from crime, as well as supporting victims and witnesses of crime, and provide reassurance to local people in the community. You'll work in partnership with the communities you serve to maintain law and order, protect members of the public and their property, prevent crime, reduce the fear of crime and improve the quality of life for all citizens. You'll use a range of technology to protect individuals, identify the perpetrators of crime and ensure successful prosecutions against those who break the law.

Further studies

BPS-accredited Master's in Forensic Psychology and BPS Qualification in Forensic Psychology (Stage 2) which is a Doctoral-level qualification

None

Professional Qualification in Probation (PQiP) training programme

Apply for either Degree Holder Entry Programme or National Graduate Leadership Programme



Criminal Justice (continued)

Further studies

Prison Officer

As a prison officer, you'll keep prisoners secure and support anyone who is vulnerable. You'll carry out security checks and searches and maintain order, sometimes using authorised physical control and restraint. You'll go with prisoners on external visits, like to court or appointments.

None

Crime Scene Investigator

As a crime scene investigator, you'll be involved in securing and protecting crime scenes, and collecting evidence from crime scenes, post-mortems and other incidents, such as fires and suspicious deaths. You'll also be responsible for processing and categorising evidence so that it can be used in criminal investigations. This might include gathering photographic evidence or physical samples from the scene, such as weapons, fingerprints, clothing or biological evidence. Crime scene investigators are sometimes known as scene of crime officers or forensic scene investigators.

None

Solicitor

Solicitors provide expert legal support and advice on a range of personal and commercial issues. As a solicitor, you'll take instructions from clients and advise on necessary courses of legal action. Clients can be individuals, groups, public sector organisations or private companies.

Solicitors Qualifying Exam (SQE)

Victim Support Worker

As a victim support worker, you'll make initial contact and provide personal and structured support to victims of crime, which include victims of serious crime, persistently targeted victims, vulnerable and intimidated victims. You'll conduct comprehensive needs assessments to offer information, practical and emotional support appropriate to victims' needs to reduce the impact and effects of crime. You will continue to support a small caseload of clients and refer those requiring specialist or longer term 1:1 support onto appropriate agencies.

None

Crime Analyst

A crime analyst's main responsibility is conducting comparative case analysis in order to identify crimes that are potentially linked and/or to identify potential suspects.

None

Criminal Researcher

Criminal researchers can go by other names like criminal investigators or criminal research specialists. The tasks of this career can vary greatly, but it is usually determined by your education or specialty. Criminal researchers use the research gathered during a case to analyse information and make important determinations. Researchers can determine if a case is worth pursuing, gather information regarding the case, and present findings that can help the case.

None

Civilian Investigator

As the civilian investigator, you'll assist in the prompt and efficient investigation of serious and complex crime across investigative departments to ensure that evidence obtained is recorded, secured and preserved in a timely and appropriate manner.

None

Intelligence Analyst

Your role as an intelligence analyst is to protect UK national security and economic wellbeing, as well as to detect and prevent serious organised crime, such as terrorist attacks, cybercrime and drug trafficking.

None

Barrister

Barristers (in England and Wales) apply an analytical mind, logical approach and attention to detail when providing advocacy and representing their clients in court. Barristers are generally hired by solicitors to represent a case in court and only become involved once advocacy before a court is needed. As a barrister, you'll plead the case on behalf of your client and their solicitor. Members of the public can also go directly to a barrister to ask for advice and representation in court.

Graduate Diploma in Law (GDL); Bar course



Children & Young People

Child Psychotherapist

As a child and adolescent psychotherapist (CAPT), you'll work with children and young people up to the age of 25 who have a range of mental health difficulties, some of which may be severe or long lasting. You'll need substantial experience of working with children and adolescents in a social care, health or education setting to work as a child psychotherapist.

Youth Worker

Youth workers guide and support young people in their personal, social and educational development to help them reach their full potential. As a youth worker, you'll set, organise and run community programmes aimed at young people aged between 11 and 25. Through these programmes, you'll help them to explore and understand their ideas, values and beliefs, building their confidence and life skills so that they can make a successful transition to adulthood.

Special Educational Needs Teacher

As a special educational needs (SEN) teacher you'll work with children and young people who need extra support, or require an advanced programme of learning, in order to reach their full educational potential. You may work with pupils who have physical disabilities, sensory impairments (i.e. hearing or visual), speech and language difficulties, learning difficulties such as dyslexia, conditions such as autism, social, emotional and mental health needs, or have a combination of these difficulties.

Play Therapist

Play therapists use play as a communication tool to help children understand their world and deal with emotional distress and trauma. Through play therapy interventions, you'll help children become more emotionally resilient and able to understand and better cope with their experiences in a safe and non-threatening environment. You may also work with parents/carers and siblings.

Further studies

Pre-clinical postgraduate course that is approved by the Association of Child Psychotherapists (ACP) and a clinical training Doctorate programme

Graduate Diploma; or Postgraduate Diploma or Master's is advisable (NYA validated and JNC recognised)

Postgraduate Certificate in Education (PGCE)

Accredited postgraduate qualification from either the British Association of Play Therapists (BAPT) or Play Therapy UK (PTUK)

Science & Pharmaceuticals

Neuroscientist

Neuroscientists combine skills in science and research to explore the brain, spinal cord and nervous system. As a neuroscientist, you'll work to understand brain functions, such as what happens to the brain when we learn or do a creative task. You may also look at what happens to the brain as it ages and develop treatments for a range of neurological issues.

Research Assistant

Research assistants are employed by research institutes to assist with academic or private research. The primary responsibility of a research assistant is to provide support to either a research fellow or a research team, through collecting, analysing and interpreting data.

Further studies

PhD and Master's (advisable) BNA

Research-based MSc or a PhD for higher level roles may be required



Recruitment & Human Resources

Human Resources Officer

As a human resources (HR) officer, your aim is to ensure that the organisation you work for can meet its objectives by having the right workforce in place. You will be involved in the whole employee lifecycle, from when they apply for a job to when they leave the organisation. You may also help provide training and development opportunities for employees, and guidance around issues such as performance and progression, and disciplinary measures where they arise.

Further studies

None



Research

Social Researcher

Social researchers plan, design, conduct, analyse and manage social research projects, and report on findings to shape or evaluate policy and address societal issues. You'll collect, analyse and evaluate data and information and present your findings to clients and key stakeholders to inform policy decisions.

Neuroscientist

Neuroscientists combine skills in science and research to explore the brain, spinal cord and nervous system. As a neuroscientist, you'll work to understand brain functions, such as what happens to the brain when we learn or do a creative task. You may also look at what happens to the brain as it ages and develop treatments for a range of neurological issues.

Research Assistant

Research assistants are employed by research institutes to assist with academic or private research. The primary responsibility of a research assistant is to provide support to either a research fellow or a research team, through collecting, analysing and interpreting data.

Consumer Researcher

As a consumer researcher, also known as market researcher, you'll aggregate information about consumers and their behaviours. The insights gleaned from this process allows you to better understand consumer preferences, needs and expectations.

Research Psychologist

A research psychologist covers a wide range of roles and positions running experiments and case studies. Researchers may work in academia, for large corporations or even the government or military. Many psychology researchers hold Master's or PhDs in their subject area, although some entry roles may require degree-level knowledge with in-house apprenticeships or training.

Further studies

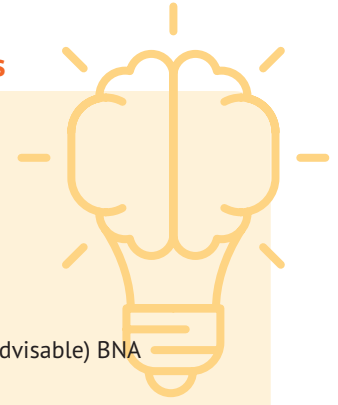
None

PhD and Master's (advisable) BNA

Research-based MSc or a PhD for higher level roles may be required

None

None



Social Care

Advice Worker

As an advice worker, you'll support your clients by providing quality, independent information and advice to help them address their problems and prevent them from getting worse. You'll provide free, impartial and confidential advice to clients on a range of issues, such as debt, employment and housing.

Family Support Worker

As a family support worker, you'll offer practical help and emotional support to families experiencing short or long-term difficulties. You'll typically be employed by local authorities' social services departments, charitable organisations or health and social care agencies.

Social Worker

Social workers support vulnerable individuals and families by protecting them, offering services and helping them find solutions to their problems. Social workers work with older adults, children with disabilities and people within the foster care system.

Care Manager

As a care manager, you'll be responsible for all aspects of the day-to-day operations within the care setting, including recruiting and managing staff, managing budgets and ensuring that the quality of the services provided meets national care standards.

Further studies

None

None

Postgraduate professional training in social work

None



Marketing, Advertising & PR

Market Researcher

As a market researcher, you'll specialise in collecting, analysing and presenting either quantitative or qualitative research. Most market researchers are employed by marketing agencies where work is carried out on numerous projects for different companies and industries. Sometimes market researchers are employed directly by a company (known as client-side), where they collect information on customer opinions, investment and marketing trends.

Public Relations Officer

Public relations officers manage an organisation's reputation and public image, ensuring that it communicates effectively with its target audience and maintains a positive public profile.

Marketing Executive

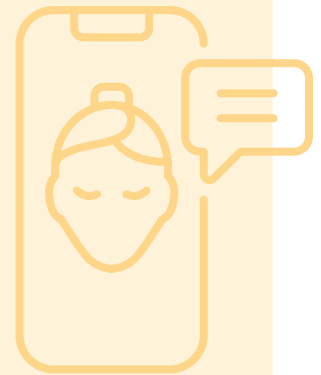
As a marketing executive, you'll contribute to and develop integrated marketing campaigns to promote a product, service or idea. Many organisations have marketing departments, meaning that you can work in both the private and public sector in areas ranging from finance, retail and media to voluntary and charitable organisations. Marketing executives may also be known as marketing officers or coordinators.

Further studies

None

None

None



Technology

UX Researcher

UX (user experience) researchers study user needs, behaviours and preferences to improve digital products and services. You will use various research techniques, such as surveys, user interviews, usability testing, A/B testing, card sorting and tree testing, to collect and analyse information on users and their behaviours.

Data Analyst

As a data analyst, you will translate numbers and data into useful information that can be used by an organisation to solve business problems. You'll use your skills to interpret data and transform it into valuable insights on trends, anomalies and patterns.

Further studies

None

None



Other

Civil Service Fast Streamer

The Civil Service Fast Stream is an accelerated leadership development programme that provides talented graduates from a range of backgrounds with the experience, skills and knowledge needed to become senior leaders within the Civil Service. As a fast streamer, you'll gain a variety of experience through placements or postings in government departments and agencies. Building up a portfolio of experience by moving between areas of work and projects, you'll also work in frontline operational delivery, policy and corporate services, and may work in roles involving direct contact with the public.

Psychology Teacher

A psychology teacher or lecturer is a specialist educator who teaches in schools, colleges or universities at GCSE, A-level or degree level. You would also complete a PGCE or similar course to achieve qualified teacher status and become a psychology teacher. To be a university lecturer you would complete a PhD.

Recovery Coach

Recovery coaches work with people in vulnerable circumstances, such as addiction rehabilitation or homelessness. A recovery coach supports the individual through recovery, including risk management, working on self-esteem and motivation.

Further studies

None

Postgraduate Certificate in Education (PGCE)

Postgraduate award in coaching may be useful