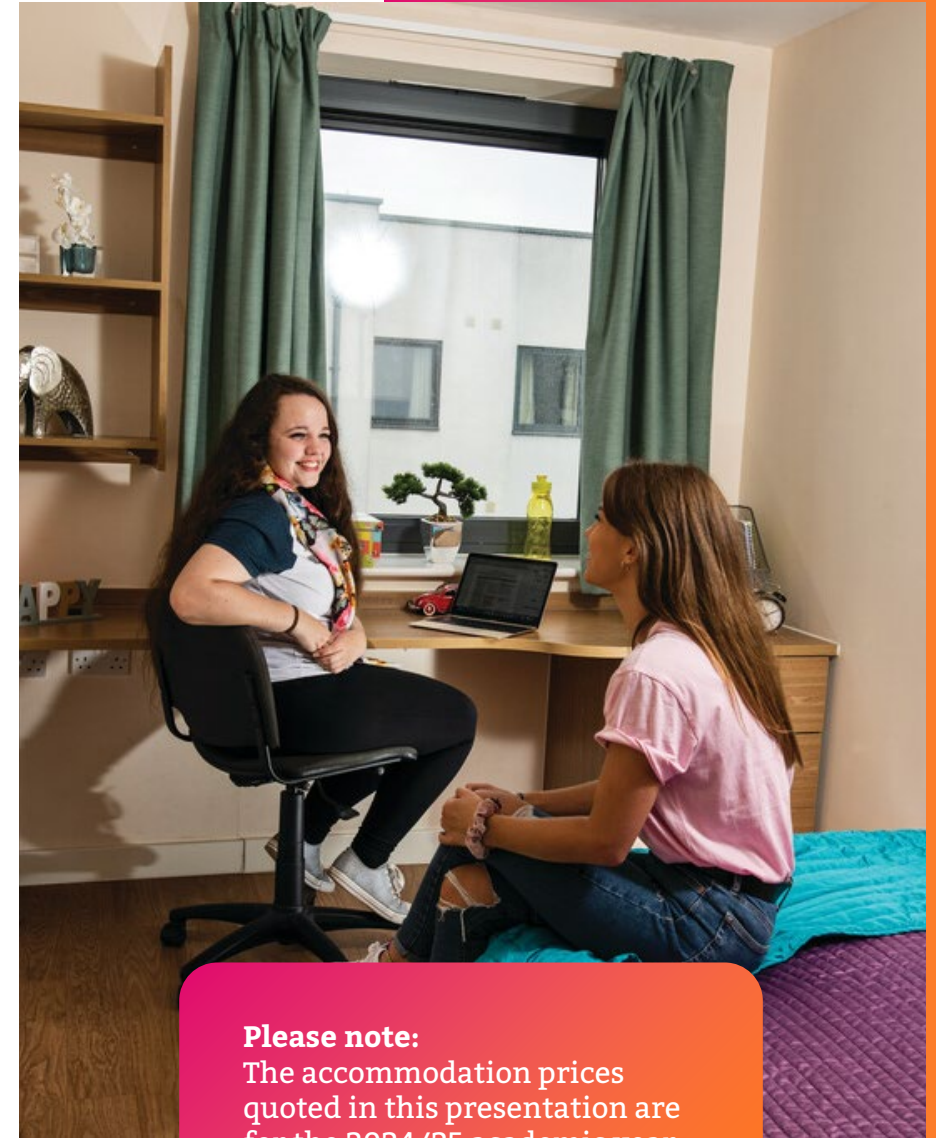


Your home from home.

Accommodation for first
year undergraduate students.

#BUOpenDay
#BelongAtBU



Please note:

The accommodation prices
quoted in this presentation are
for the 2024/25 academic year.
For the latest information,
please refer to the BU website.

Check yourself in to the Open Day

Let us know you're
here by:



Clicking the button in the email
we sent you this morning

OR



Asking a member of staff or
Student Ambassador to scan
the QR code on your e-ticket



It's going to be great...

- A wide variety of accommodation options, both on and off-campus and in halls of residence or BU managed housing
- Good transport links to the university campuses from all sites
- Cycle storage
- Internet connection
- Laundry facilities



ResLifeBU

- Exclusive for those living in the BU accommodation portfolio
- Works around three core principles: **Social, Wellbeing and Skills**





Bournemouth and the local area



Bournemouth and Poole



Lansdowne Campus

15 mins

Talbot Campus by bus or
bike

10 mins

Town centre
The beach
Bournemouth Gardens

5 mins

Bournemouth Rail/Bus
station
Supermarkets and
grocers
Between all halls blocks
The Old Fire Station

Lansdowne Halls

- Bailey Point
- Chesil House
- Cranbourne House
- Dorchester House
- Lansdowne Point
- Lulworth Accommodation
- Lyme Regis
- Purbeck House



Bailey Point – Guarantor required

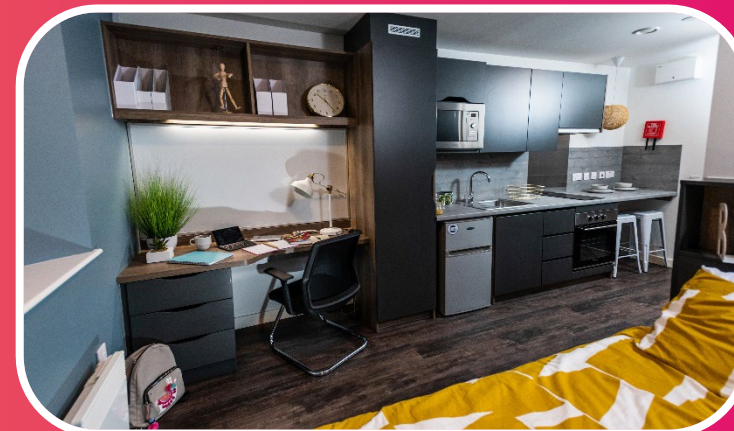
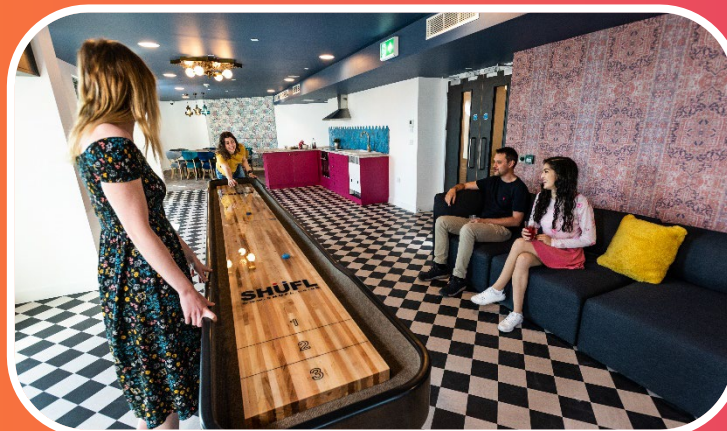
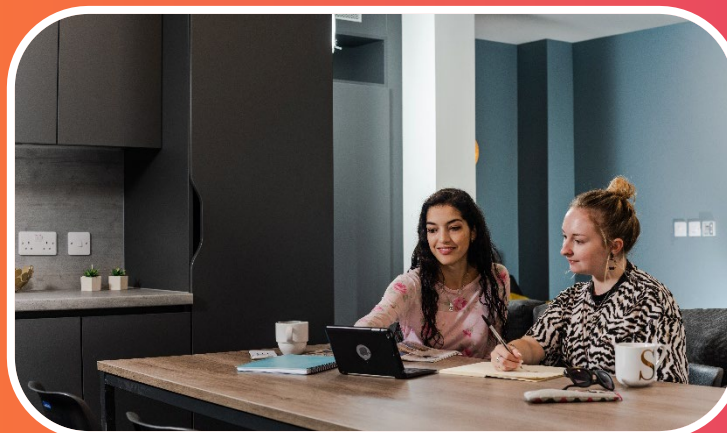
£250 deposit

£192.66 pw – 42 weeks (standard flat)

£225.08 pw – 50 weeks (standard flat)

£236.64 pw – 50 weeks (prem. studio)

- 550 students at this accommodation
- 5-8 bed flats
- En-suite in all rooms
- Small double bed
- Common room
- Gym



Chesil House – Guarantor required

£250 deposit & two weeks rent in advance against the third rental instalment

£164.04 pw – 42 weeks

- 200 students at this accommodation
- 5 or 6 bed flats
- En-suite in all rooms
- Common room



Cranborne House – Guarantor required

£250 deposit & two weeks rent in advance against the third rental instalment

£151.71 - £170.77 pw – 42 weeks (flat)
£150.59 - £169.65 pw – 50 weeks* (flat)
£179.24 pw – 50 weeks (studio)

- 500 students at this accommodation
- 6 or 7 bed flats
- En-suite in all rooms
- Common room



Dorchester House

£250 rent instalment 1

£177.83 - £188.06 pw – 42 weeks (flat)
£212.73 - £221.83 pw – 42 weeks (studio)

- 590 students at this accommodation
- 3-7 bed flats
- En-suite in all rooms
- Small double bed in all rooms
- Common room
- Gym

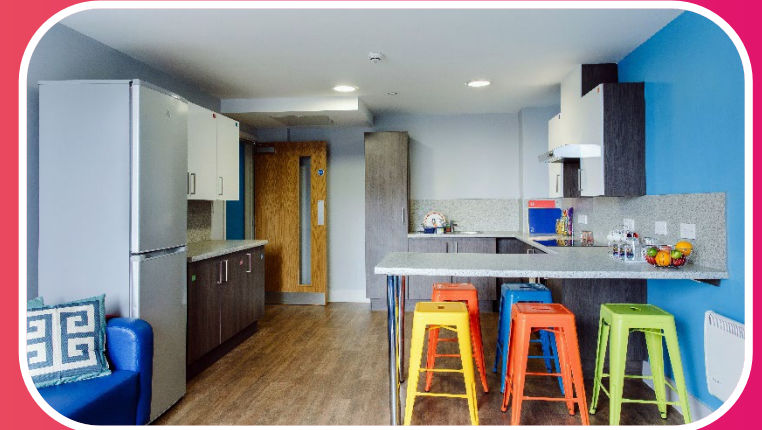
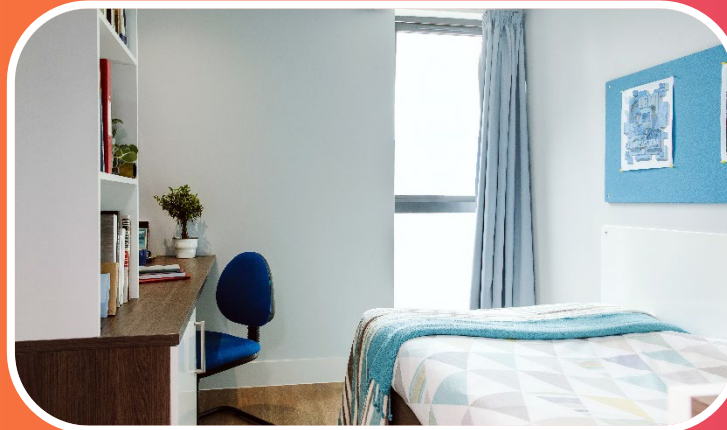
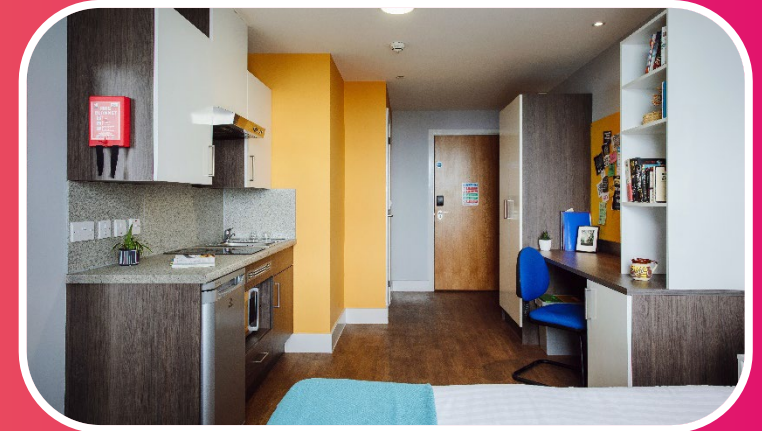


Lansdowne Point

£250 rent in advance

- £197.95 pw – 42 weeks (classic en-suite)
- £202.95 pw – 42 weeks (deluxe en-suite)
- £227.95 pw – 42 weeks (studio)
- £226.65 pw – 50 weeks (studio)

- 257 students at this accommodation
- 5-6 bed flats
- En-suite in all rooms

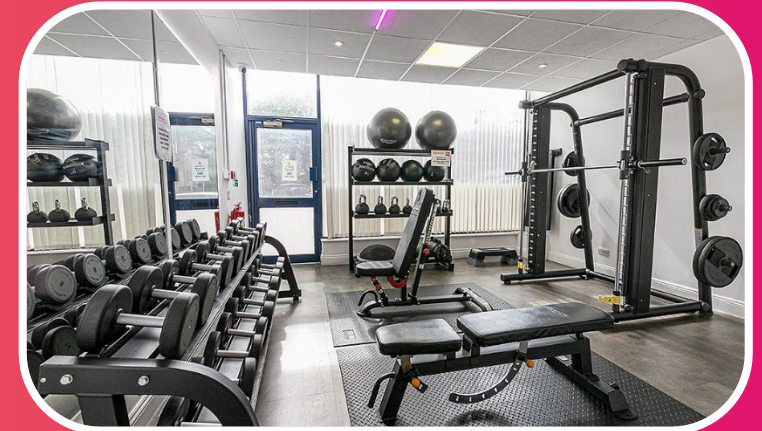
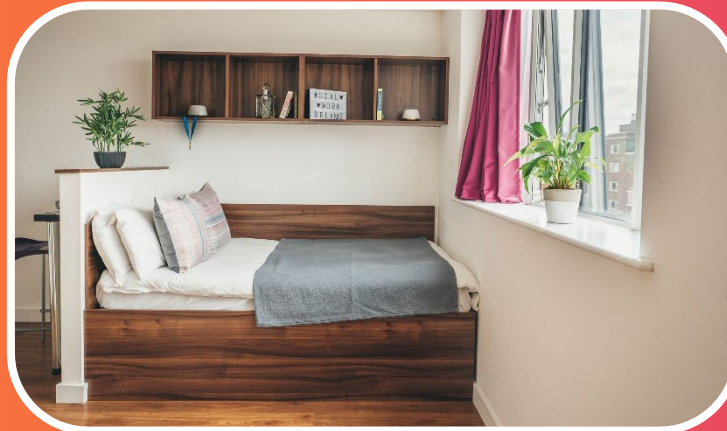
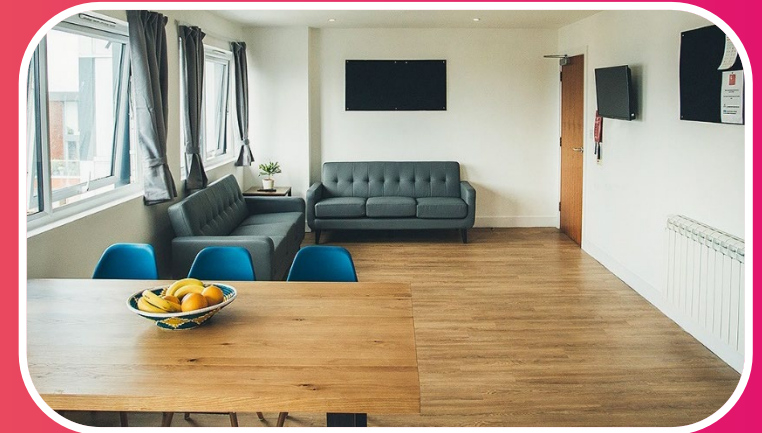
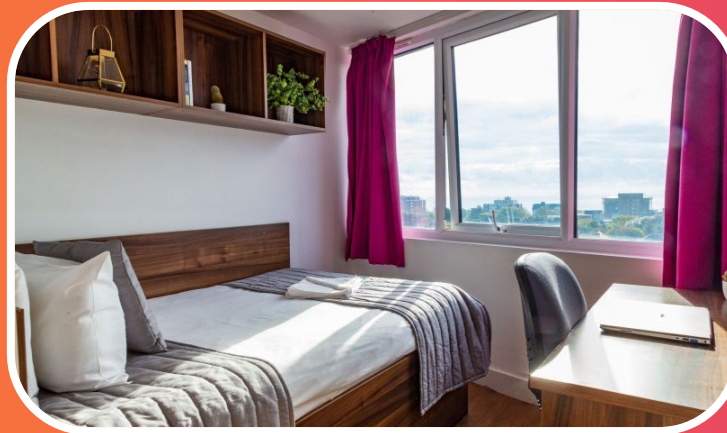


Lulworth Accommodation – Guarantor required

£150 holding fee, plus four weeks' rent due by end of August, minus the holding fee

£173.77 pw – 42 weeks (standard flat)
£183.77 pw – 42 weeks (sea view flat)
£193.77 pw – 42 weeks (gold sea view flat)

- 124 rooms
- En-suite in all rooms
- Communal spaces include gym, café, outdoor chill out area, outdoor football and basketball court

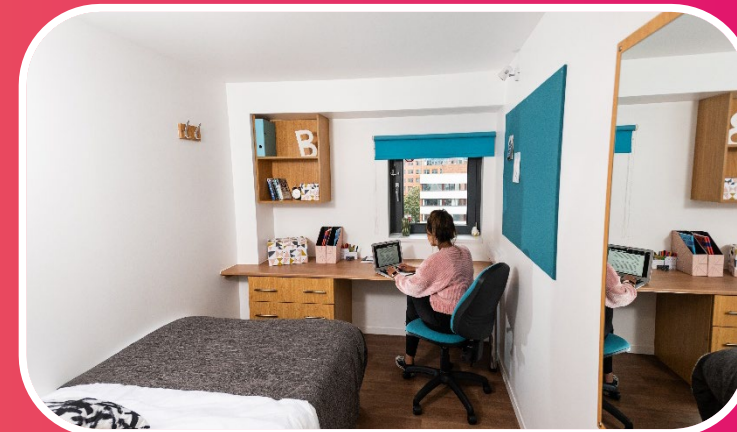


Lyme Regis House – Guarantor required

£250 deposit & two weeks rent in advance against the third rental instalment

£173.83 pw – 42 weeks (flat)
£192.03 pw – 50 weeks (studio)

- 400 students at this accommodation
- 5 bed flats
- En-suite in all rooms
- Common room



Purbeck House – Guarantor required

£250 deposit & two weeks rent in advance against the third rental instalment

£165.59 pw – 42 weeks (flat)
£196.52 pw – 50 weeks (studio)

- 500 students at this accommodation
- 5-7 bed flats
- En-suite in all rooms
- Common room



Poole

30 mins

Talbot Campus by bus

5 mins

From the Town Centre
Poole Train Station
Poole Quay
Shopping Centre
Supermarkets



Corfe House

Corfe House – Guarantor required

£250 deposit & two weeks rent in advance against the third rental instalment

£163.29 - £172.76 pw – 42 weeks (flat)
£171.64 pw – 50 weeks (flat) (NHS courses)

- 308 students at this accommodation
- 5 or 6 bed flats
- En-suite in all rooms
- Common room



Talbot Campus

15 mins

Lansdowne Campus by bus
or bike

20 mins

From the Town Centre
Local supermarkets

2 mins

Lecture theatres &
seminar rooms
Open Access Centre
On-campus facilities

Student Village

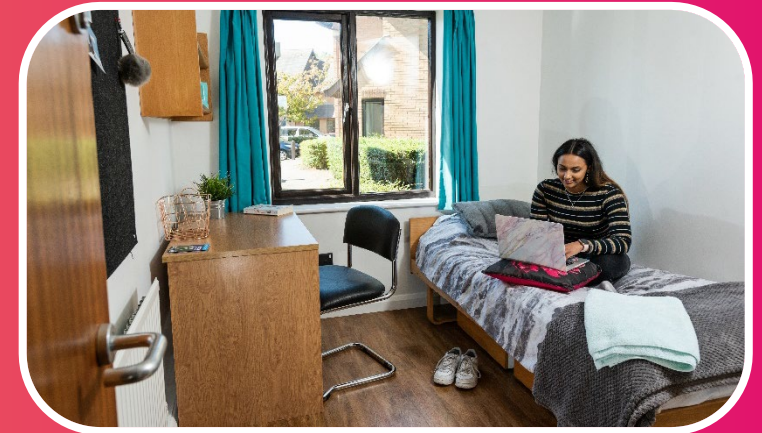


Student Village

£250 rental instalment 1

£143.49 - £157.98 pw – 40 weeks (room)
£143.13 - £157.62 pw – 42 weeks (room)
(Paramedic Science)

- 278 students at this accommodation
- 3 - 7 bed houses
- Shared facilities
- Live on campus



Unilet shared houses

£250 rental instalment 1

£141.48 - £153.49 pw – 40 weeks (room)

- 4-9 bed houses
- Shared facilities
- 4 miles from Talbot/Lansdowne Campus
- 24/7 support from Residential Services
- Parking may be available (roadside/driveway)



Booking accommodation

- Book accommodation through the BU Accommodation Portal
- Go to the BU website for more details:
www.bournemouth.ac.uk/accommodation
- **Guaranteed accommodation** – we can guarantee you a room in our accommodation, if you meet the terms of our Accommodation Guarantee



Stage 1 - Registering your interest in accommodation

Once you have made BU your Firm choice, we will email you information about Stage 1 (Registering your interest in accommodation).

The screenshot shows the 'BU Accommodation Portal' interface. At the top is a banner image of a coastal scene with a pier. Below the banner is a blue navigation bar with a white menu icon. The main content area has a light grey background. A welcome message is followed by a blue link: 'Click here to log onto the Accommodation Portal'. Below this is a progress bar with five circles; the fourth circle is highlighted in blue, indicating the current step. The section is titled 'Additional Information'. The first part is '1. Medical - Please read the following statements carefully and select the one which applies to you.' It includes a paragraph of text and a drop-down menu with a red arrow pointing to it. The second part is '2. Family, Partner or Dependents' with a question and a drop-down menu, also with a red arrow pointing to it. At the bottom right, there is a link for 'Criminal Conviction'.

BU Accommodation Portal

Welcome to the Bournemouth University Accommodation Portal

[Click here to log onto the Accommodation Portal](#)

Additional Information

1. Medical - Please read the following statements carefully and select the one which applies to you.

(If you select A or B from the drop-down below you will be able to continue and complete your registration. When eligible you will be contacted and be able to book your room. If you select C your registration will be held and your accommodation requirements will be reviewed along with relevant information from your AUS medical information form)

If you have chosen B or C it is important that you use the space below to tell us about your condition. This information will be passed on to the relevant accommodation management team

2. Family, Partner or Dependents

Do you have a family, partner or dependents who require accommodation with you?

If you select yes this will halt your registration and we will contact you with further information.

[Criminal Conviction](#)

Stage 2 - Booking your accommodation

- Use these filters to narrow searches, you will only see rooms available. If you want Single Sex it is in the attributes filter.
- Click to see others who have already booked.

Getting moved in

Stage 1 - When BU is your firm choice

Register your interest in accommodation

Stage 2 - Reserve your room

UF - pay and sign to secure your room

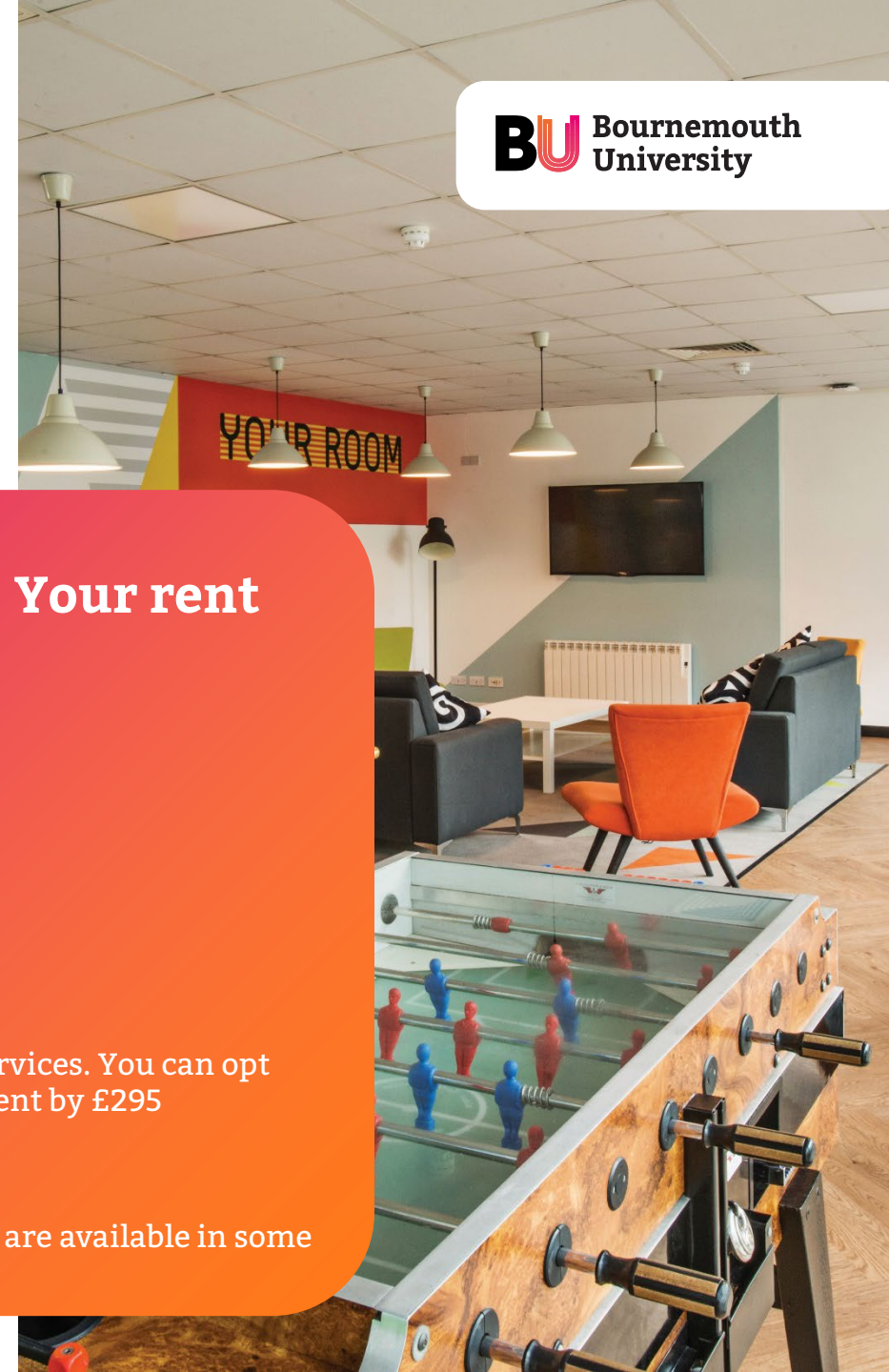
CF - wait for results before securing your room.

We've got this covered. Your rent includes...

- 12-month unlimited BU bus pass*
 - ✓ Covers all university travel
 - ✓ Includes some local buses too
- Internet usage**
- Bills (gas, electric, water, sewerage)

*Providing unlimited travel on selected services. You can opt out of this feature, reducing rental payment by £295 (2024 entry figure)

**Additional services/premium packages are available in some halls.



Getting moved in

So, you're moving away from home - maybe for the first time?

Prepare

Get things covered

Space saver

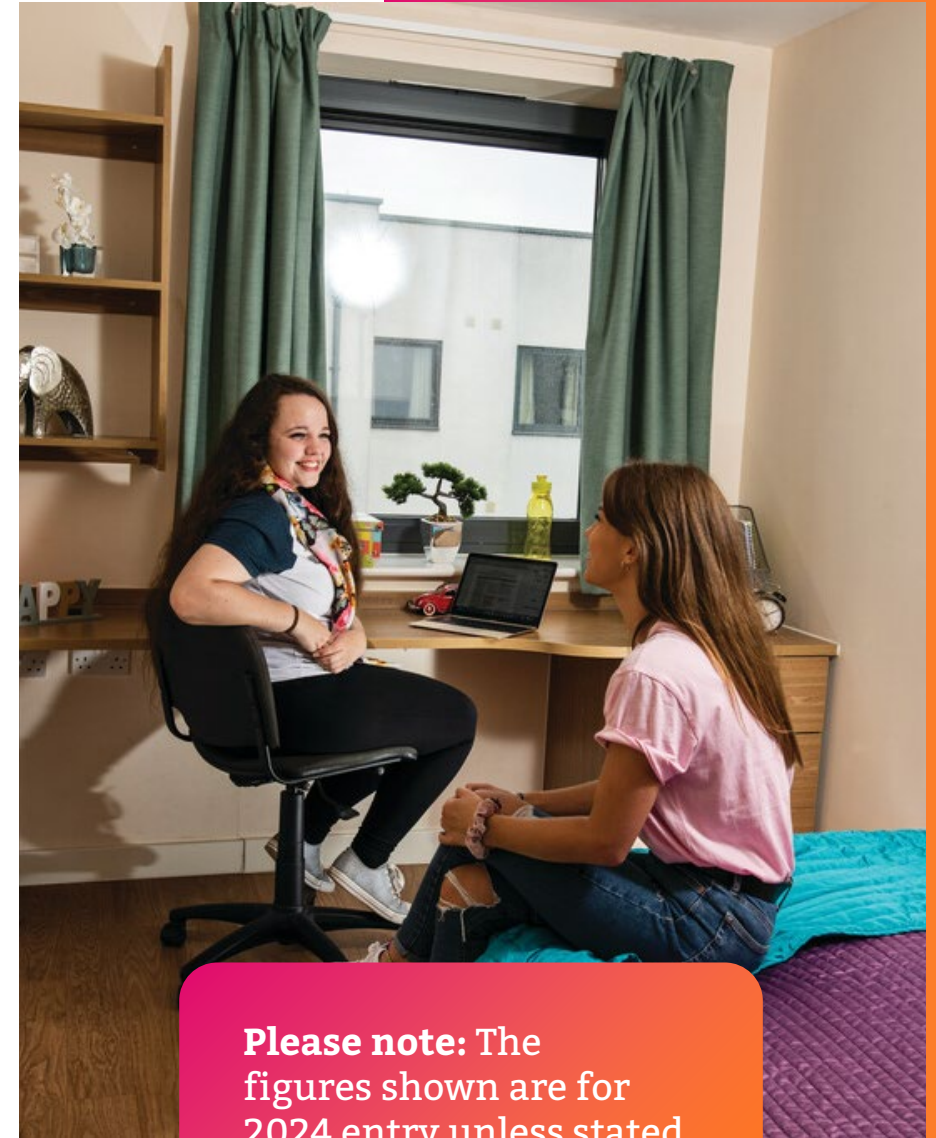
Learn more on our website:
www.bournemouth.ac.uk/accommodation



The best start

**Fees & funding for first
year undergraduates.**

#BUOpenDay
#BelongAtBU



Please note: The figures shown are for 2024 entry unless stated otherwise.

What we'll talk about

Fees & financial support

- Tuition Fee Loan
- Maintenance Loan

BU support: scholarships & bursaries

- BU Maintenance Bursary up to £2,400 (up to £3,200 if studying Foundation Year)
- BU Care Leavers Bursary up to £9,000 (up to £12,000 if studying Foundation Year)
- BU Estrangement Bursary up to £9,000 (up to £12,000 if studying Foundation Year)
- Sports Scholarship – up to £5,000
- Music Scholarship - worth up to £600



STUDENT FINANCE EXPLAINED

2024 TO 2025

The cost of study

- **Tuition Fee Loan** to cover full amount
- Students do not start repayment until income is over £25,000* a year, £2,083 a month, £480 a week
- Fees will not change for the duration of the course
- You can pay the university directly in a single lump sum or two instalments

*Latest figures from Student Finance England.

**Foundation Year fees vary depending on whether they are classroom based or not – up to £9,535

£9,535**

**Per year,
Honours degree
courses (level 4)**

10%

**Student family discount for each
year of study**

If an immediate member of the
family studies at BU or is a graduate of BU.

The cost of living: Maintenance Loan

Maintenance Loans are for day-to-day costs - typically accommodation, travel, domestic bills etc. They are paid in three instalments (one each term)

Up to **£10,277**
living away from
home, not in London

Up to **£8,610**
living at home

- 45% is non-income assessed and up to 55% is income assessed

This information is provided in good faith using the latest information available from Student Loans Company. The Maintenance Loan amounts shown are for 2024/25 entry and based on a 30-week course. A Long Courses Loan is available if your course is more than 30 weeks and 3 days. For the latest information, visit www.gov.uk/student-finance



The cost – if you take a placement year

Maintenance Loans are available whilst you are on a paid or unpaid placement and are non-means tested.

Placement year
tuition fee

£1,850

£2,324

Living at
home

£3,098

Placement
elsewhere in
UK or abroad

£4,350

Placement in
London

For the latest information, visit www.gov.uk/student-finance



Paying it back

- You will start repaying your **combined loan amount automatically** (by HMRC) in the **April following graduation** or leaving the course, only **when you earn over the threshold**.

If any amount remains after 40 years, it is written off.

Yearly income before tax	Income from which 9% will be deducted	Approximate monthly repayment
£25,000	£0	£0
£28,000	£3,000	£22
£29,500	£4,500	£33
£31,000	£6000	£45
£33,000	£8,000	£60

9%

of your income
above £25,000
(before tax) for 40
years max

Interest accrues on the loan from the moment you take it out. Likely to be

RPI

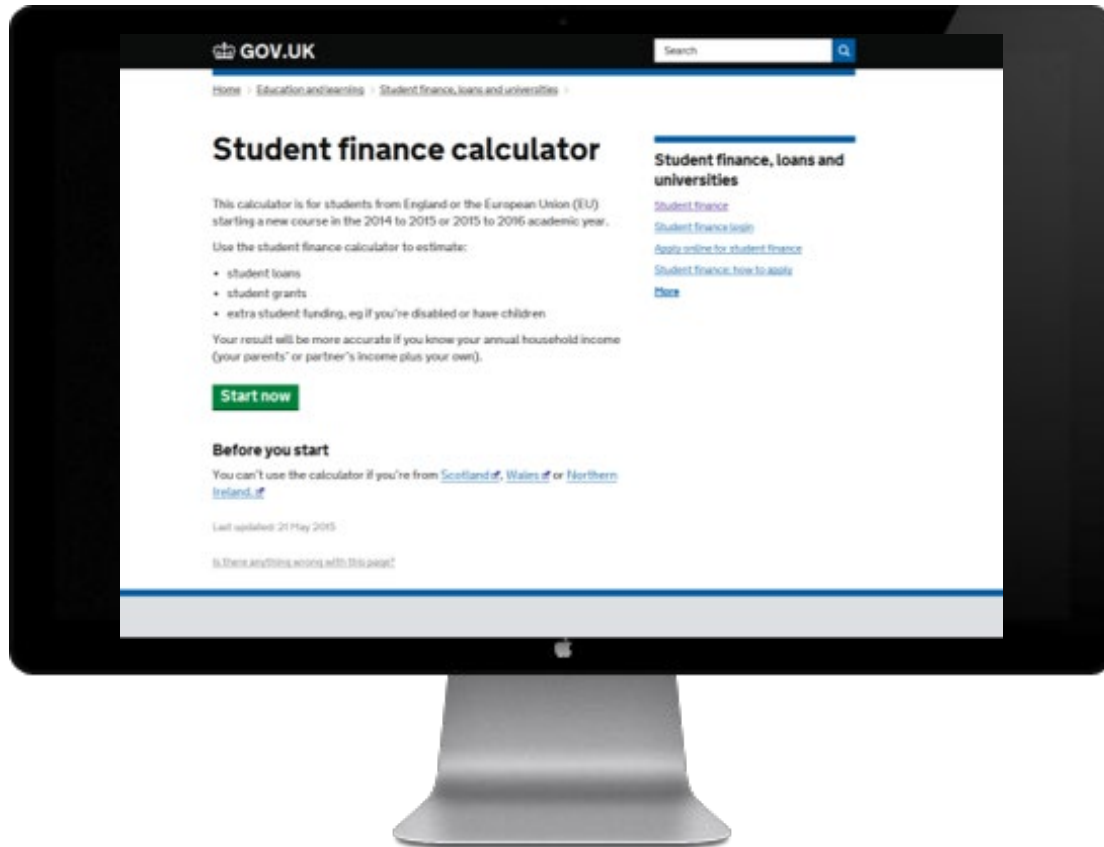
Additional support from the Government

**Non-repayable
additional
support**

**Apply as part of
your student
finance
application**

- **Childcare grant:**
 - Up to £193.62 a week for 1 child
 - Up to £331.95 a week for 2 children or more
- **Parents' Learning Allowance:**
 - Up to £1,963 a year to support learning costs (doesn't affect benefits or tax credits)
- **Adult Dependents' Grant:**
 - Up to £3,438 a year
- **Child tax credit:**
 - Up to £3,235 a year for each child for the 2023 to 2024 tax year
- **Disabled Students' Allowances:**
 - Up to £26,948 for support. Help with day-to-day costs of studying that are related to your disability, specialist equipment, a non-medical helper allowance.

Where to start



GOV.UK

www.gov.uk/student-finance

- Student finance calculator
- Information & guidance
- Student finance application

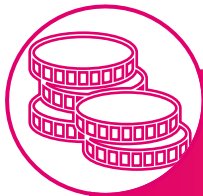
What you'll need:

- ✓ Details of household income
- ✓ UK passport number (enter online) or other identity documents (may need to be sent)

Bursaries & Scholarships from BU

- ✓ This support is directly from BU – it's additional to your student loan
- ✓ BU should be your firm choice to be considered for any of this funding
- ✓ They're non-repayable





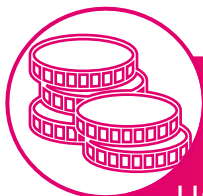
BU Maintenance Bursary

Up to £2,400* over 3 years of study (£800 each year) For 'Home' fee status applicants living in England with a household income up to £25,000.



BU Care Leavers Bursary

Up to £9,000** over 3 years of study (£3,000 each year) for 'Home' fee status applicants living in England who have been in the care of the Local Authority for a period of 3 months or more, with a household income up to £25,000.



BU Estrangement Bursary

Up to £9,000** over 3 years of study (£3,000 each year) for 'Home' fee status applicants living in England who have been estranged from their parents for 12 months or more, with a household income up to £25,000.

*Up to £3,200 for those studying a Foundation Year

**Up to £12,000 for those studying a Foundation Year

Terms, conditions & exclusions apply. Subject to approval of our new Access and Participation Plan for 2025/26 to 2028/29 by the Office for Students, expected late 2024. See www.bournemouth.ac.uk/bursaries





BU Sport Scholarship

Up to £5,000 supporting elite athletes representing their sport at national or junior level.



BU Music Scholarship

Approximately £600 per year supporting outstanding musicians and singers who raise the profile of BU's performance-based output.



Things to remember

2025 entry

From March

- Apply for your accommodation when your place in Unconditional Firm

May

- Student funding applications must be submitted by end of May and explore Scholarships & Bursaries
- Make your university choice

September

- Get ready to start uni!





Get in touch

01202 961916 (BU)

0300 1000607 (Student Finance England)

futurestudents@bournemouth.ac.uk

The university has consulted the latest available information in the production of this presentation for delivery in Autumn 2024 but cannot be held liable for its accuracy.

Full details, including accommodation booking and residential terms & conditions can be found at:

www.bournemouth.ac.uk/accommodation

You should take advice based on your personal circumstances before entering into any financial commitment. If you are joining us from Wales, Scotland or Northern Ireland, please see the relevant funding bodies for details of Maintenance support.

The latest finance information can be found at:

www.gov.uk/studentfinance **www.bournemouth.ac.uk/ug-funding**