



Bournemouth
University



Please Note:

The accommodation prices quoted in this presentation are for the 2023/24 academic year. For the latest information, please refer to the BU website.

Your home from home.
Accommodation for first year undergraduate students

#BUOpenDay
#BelongAtBU

It's going to be great...

- A wide variety of accommodation options, both on and off-campus and in halls of residence or BU managed housing
- Good transport links to the university campuses from all sites
- Cycle storage
- Internet connection
- Laundry facilities



- Exclusive for those living in the BU accommodation portfolio
- Works around three core principles: **Social**, **Wellbeing** and **Skills**







Bournemouth & Poole



Lansdowne Campus

15 mins

Talbot Campus by bus or bike

10 mins

Town centre

The beach

Bournemouth Gardens

5 mins

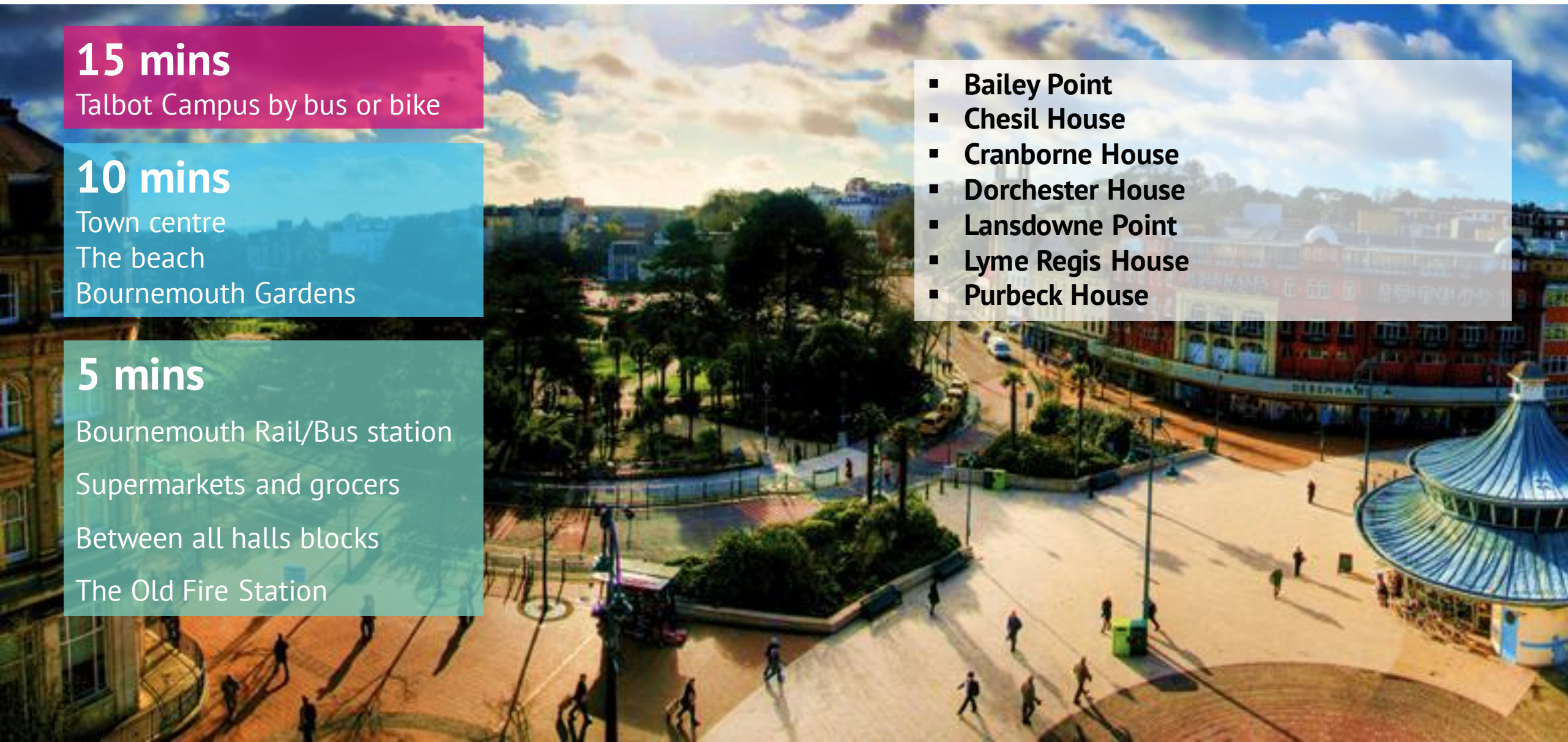
Bournemouth Rail/Bus station

Supermarkets and grocers

Between all halls blocks

The Old Fire Station

- Bailey Point
- Chesil House
- Cranborne House
- Dorchester House
- Lansdowne Point
- Lyme Regis House
- Purbeck House



Bailey Point – Guarantor required

£250 deposit & two weeks rent in advance against the third rental instalment

£183.84 - £190.45 pw - 42 weeks (flat)

£214.72 pw - 50 weeks (standard studio)

£225.75 pw - 50 weeks (premium studio)

550 students at this accommodation

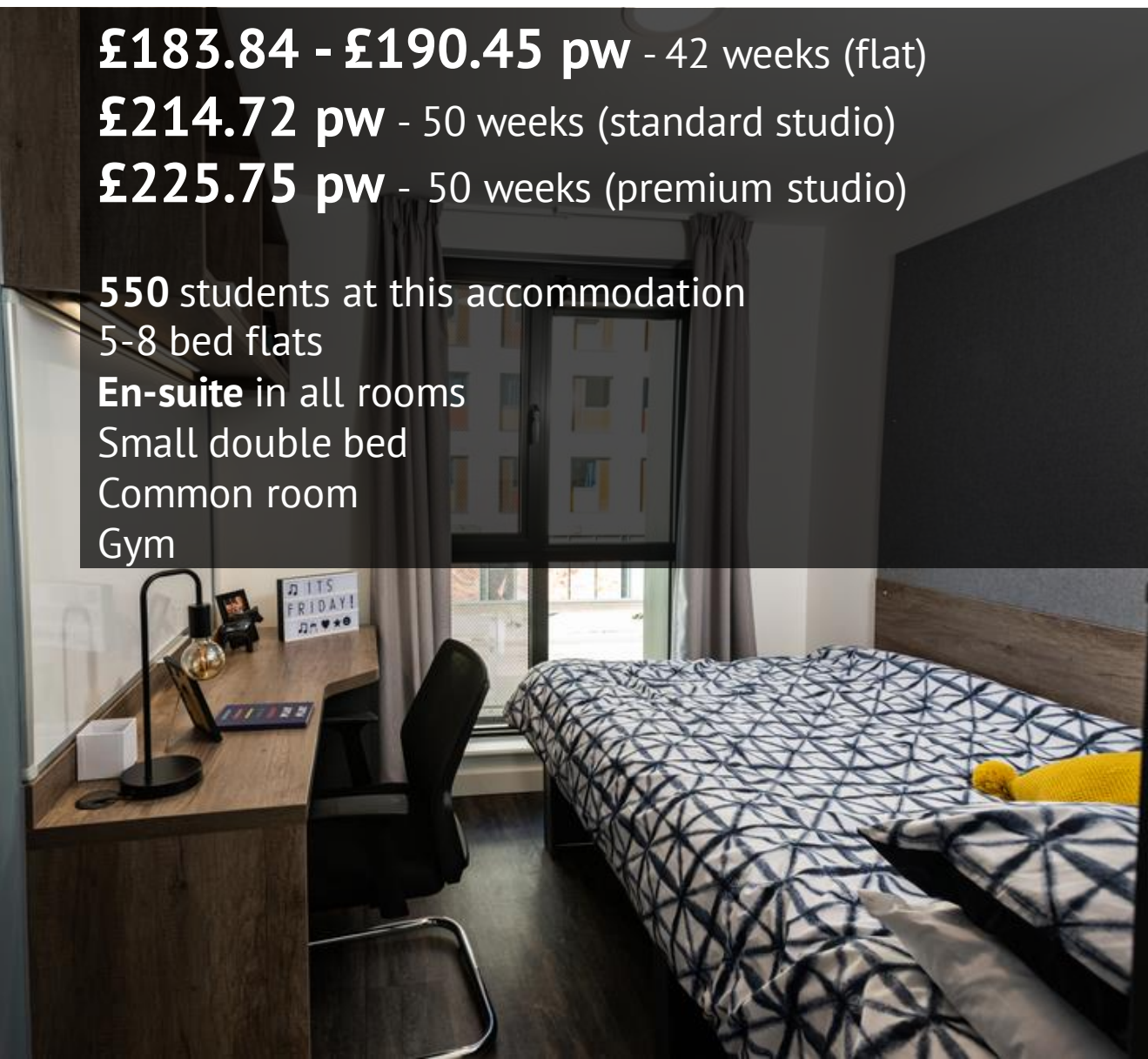
5-8 bed flats

En-suite in all rooms

Small double bed

Common room

Gym



Chesil House – Guarantor required

£250 deposit & two weeks rent in advance against the third rental instalment

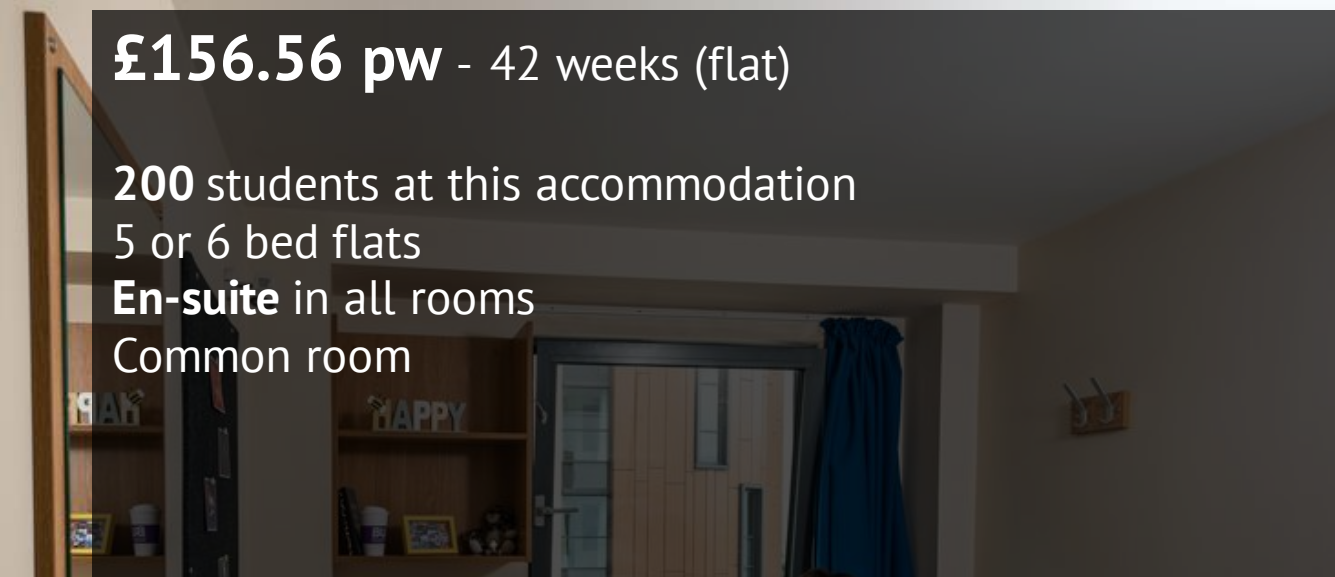
£156.56 pw - 42 weeks (flat)

200 students at this accommodation

5 or 6 bed flats

En-suite in all rooms

Common room



Cranborne House – Guarantor required

£250 deposit & two weeks rent in advance against the third rental instalment

£145.98 - £164.31 pw - 42 weeks (flat)
£145.39 - £163.72 pw - 46 weeks* (flat)
£144.89 - £172.44 pw - 50 weeks (flat/studio)

500 students at this accommodation

6 or 7 bed flats

En-suite in all rooms

Common room

*Paramedic Science



Dorchester House

£250 First Rental Instalment

£169.70 - £179.97 pw - 42 weeks (flat)

£202.95 - £211.63 pw - 50 weeks (studio)

590 students at this accommodation

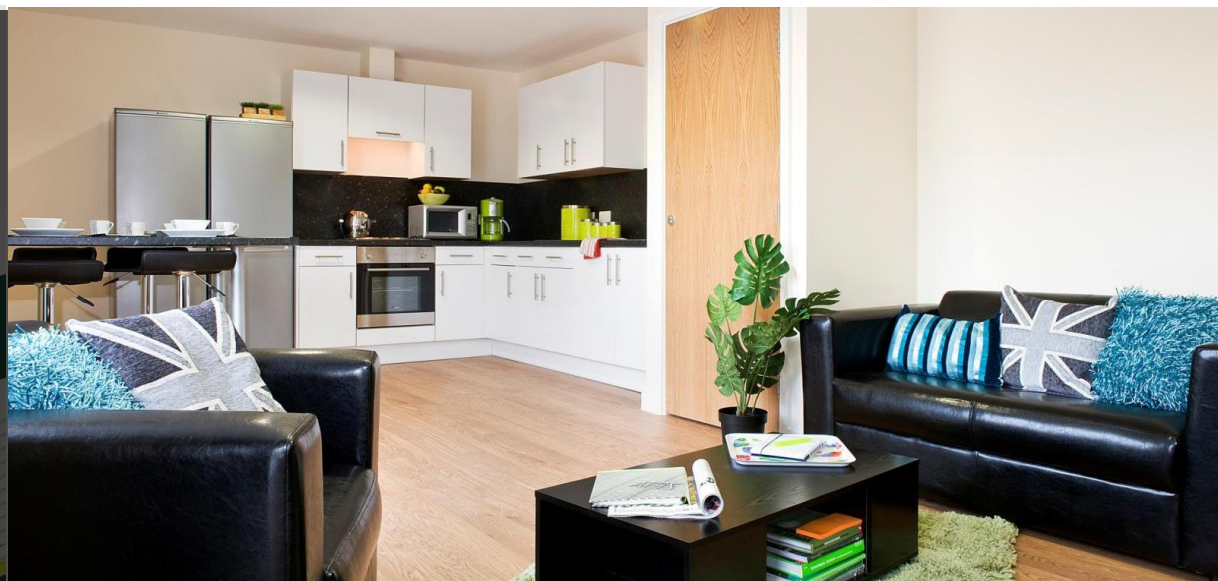
3-7 bed flats

En-suite in all rooms

Small double beds in all rooms

Common room

Gym



Lansdowne Point

£250 First Rental Instalment

£188.54 pw - 42 weeks (classic en-suite)

£193.54 pw - 42 weeks (deluxe en-suite)

£216.45 pw - 50 weeks (studio)

257 students at this accommodation
5-6 bed flats

En-suite in all rooms



Lyme Regis House – Guarantor required

£250 deposit & two weeks rent in advance against the third rental instalment

£165.89 pw - 41 weeks (flat)

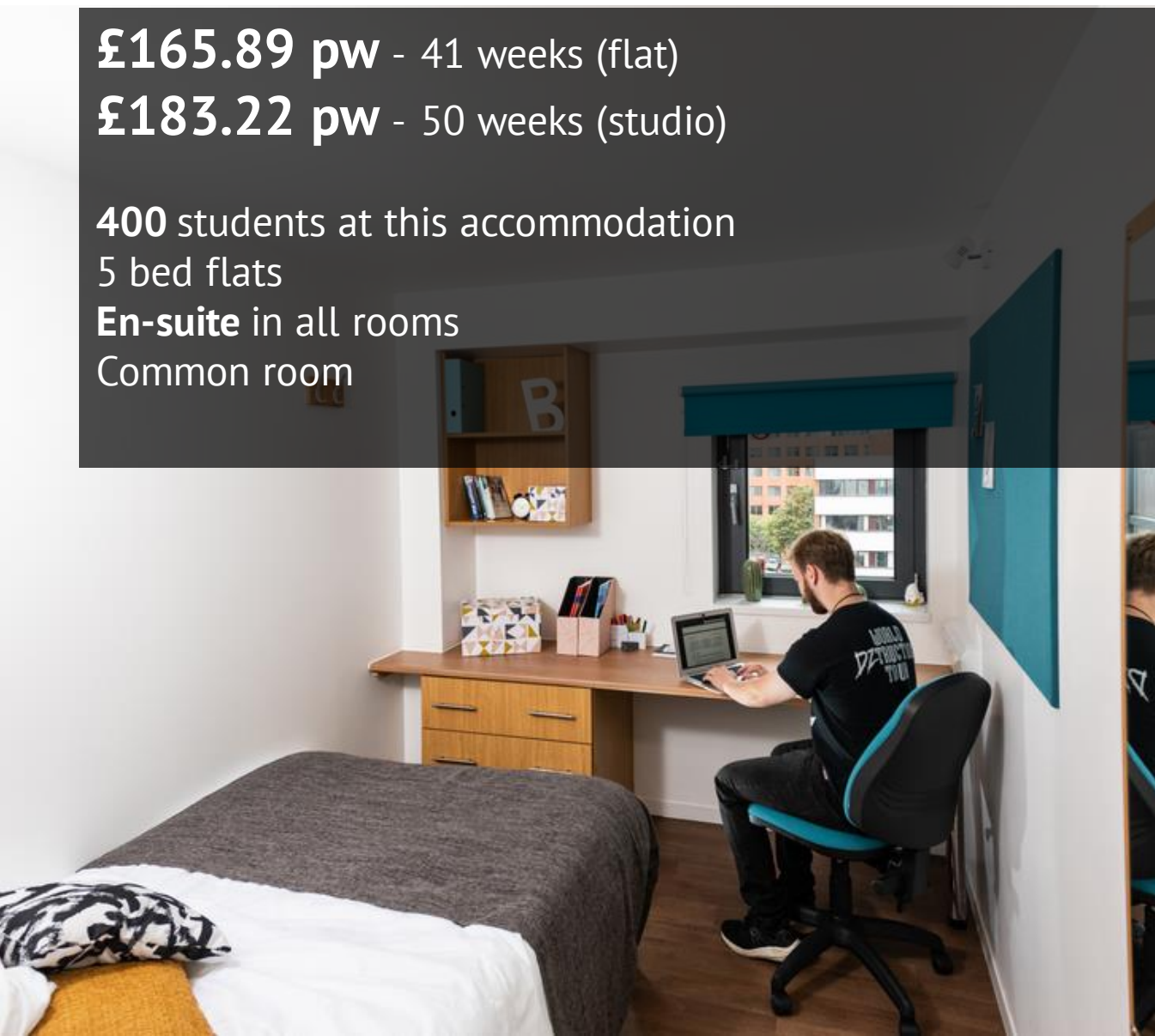
£183.22 pw - 50 weeks (studio)

400 students at this accommodation

5 bed flats

En-suite in all rooms

Common room



Purbeck House – Guarantor required

£250 advance rent payment, deducted from the first rent payment

£157.89 pw - 42 weeks (flat)

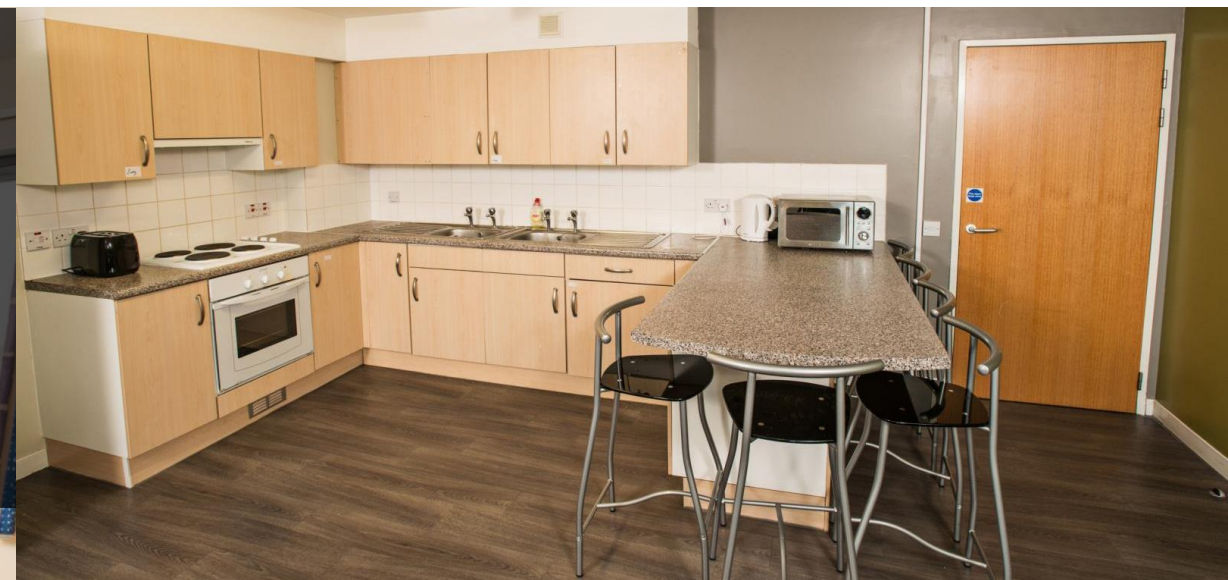
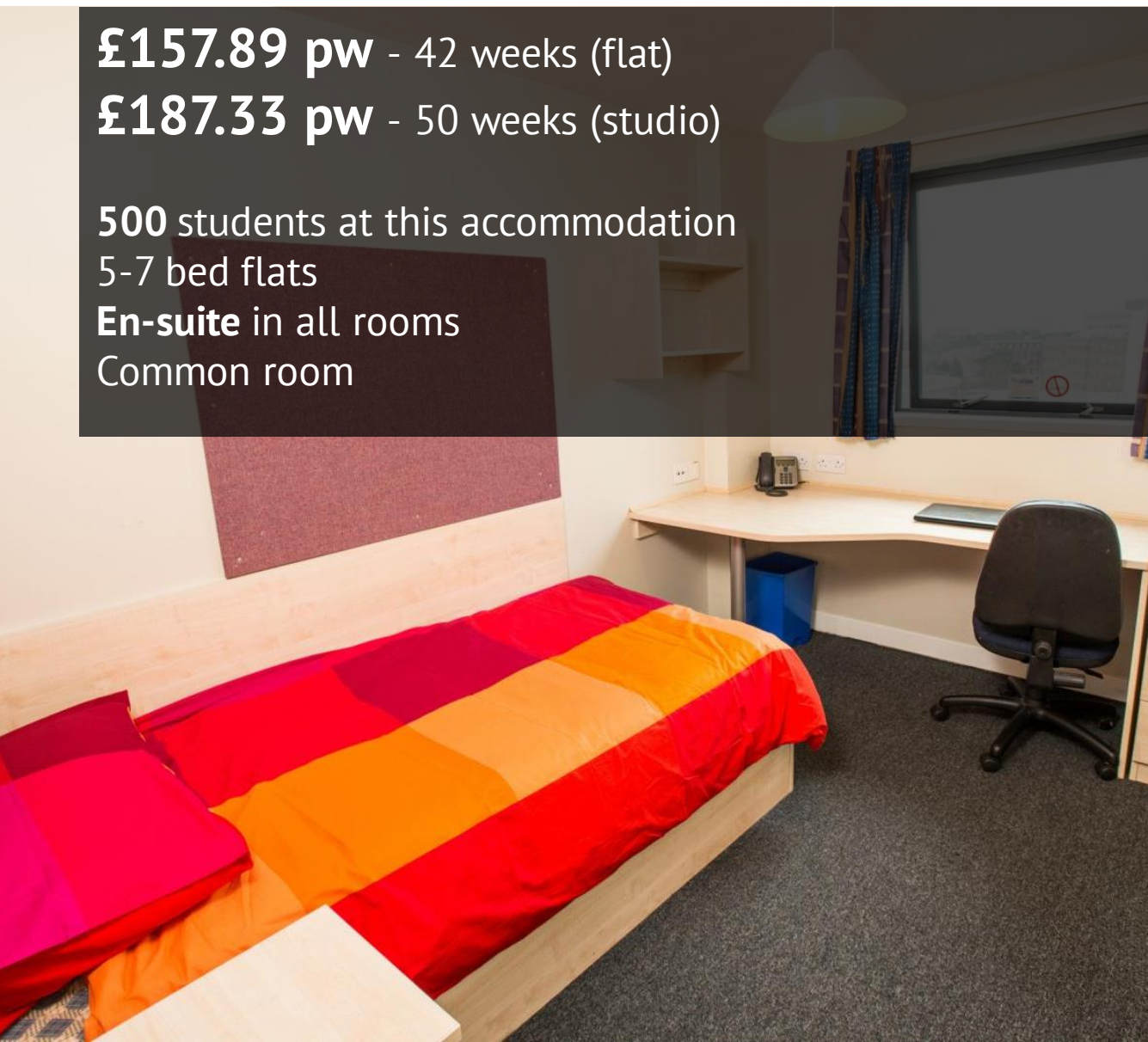
£187.33 pw - 50 weeks (studio)

500 students at this accommodation

5-7 bed flats

En-suite in all rooms

Common room



30 mins

Talbot Campus by bus

5 mins

from the Town Centre
Poole Train Station
Poole Quay
Shopping Centre
Supermarkets

■ Corfe House



Corfe House – Guarantor required

£250 deposit

£155.84 - £164.87 pw - 42 weeks (flat)

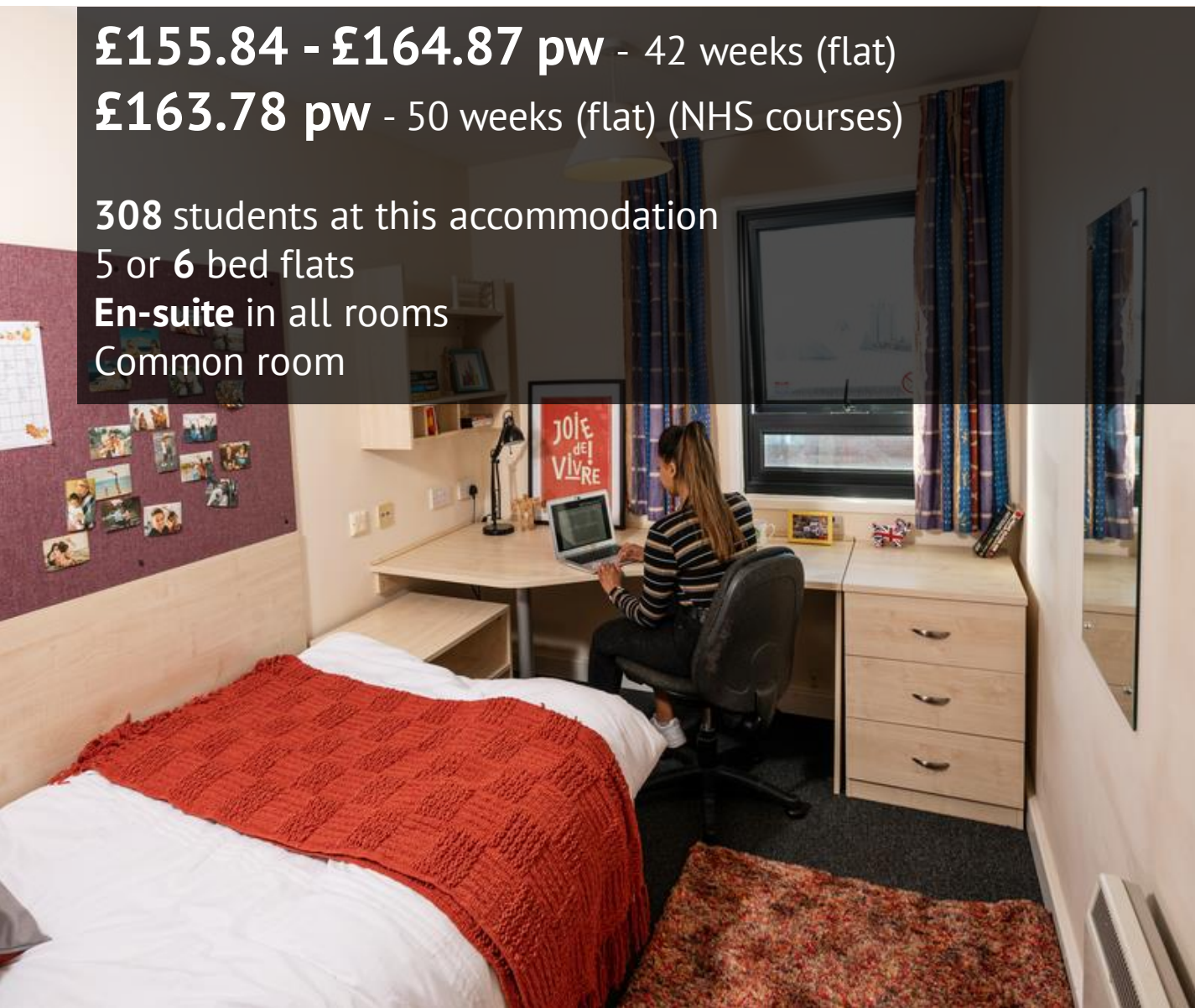
£163.78 pw - 50 weeks (flat) (NHS courses)

308 students at this accommodation

5 or 6 bed flats

En-suite in all rooms

Common room



15 mins

Lansdowne Campus by
bus or bike

20 mins

from the Town Centre
Local supermarkets

2 mins

Lecture theatres & seminar
rooms

Open Access Centre

On-campus facilities

▪ Student Village



£136.84 - £150.64 pw - 40 weeks (room)

£136.50 - £150.30 pw - 42 weeks (room) (Archaeology)

£135.91 - £149.71 pw - 46 weeks (room) (Paramedic Science)

£192.24 pw - 50 weeks (studio)

278 students at this accommodation

3-7 bed houses

Shared facilities

Live on campus



Unilet shared houses

£250 First Rental Instalment

£127.51 - £147.43 pw - 41 weeks (room)

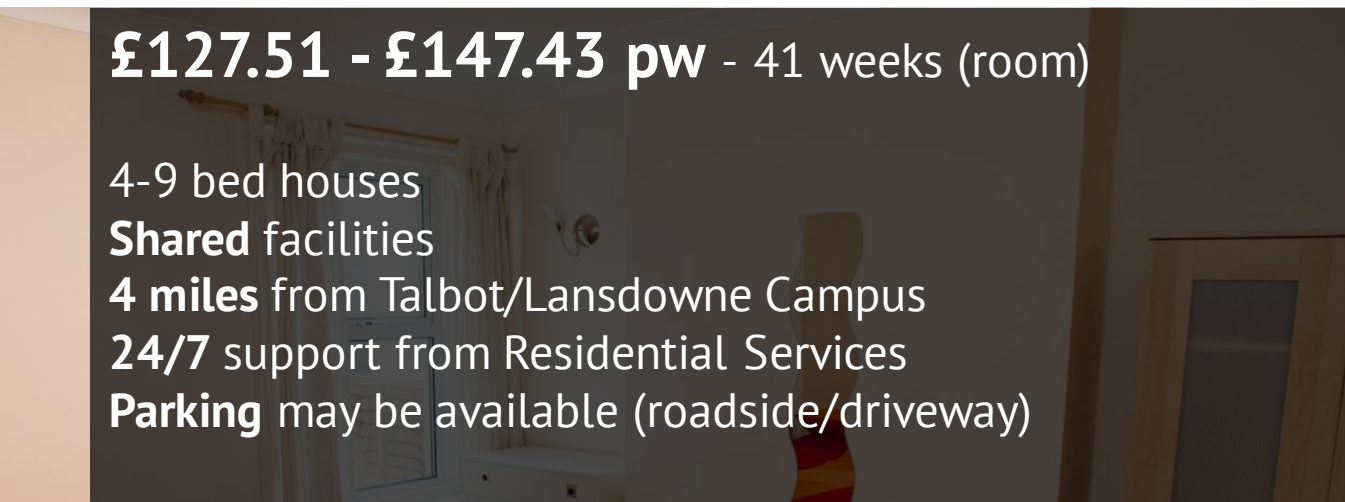
4-9 bed houses

Shared facilities

4 miles from Talbot/Lansdowne Campus

24/7 support from Residential Services

Parking may be available (roadside/driveway)



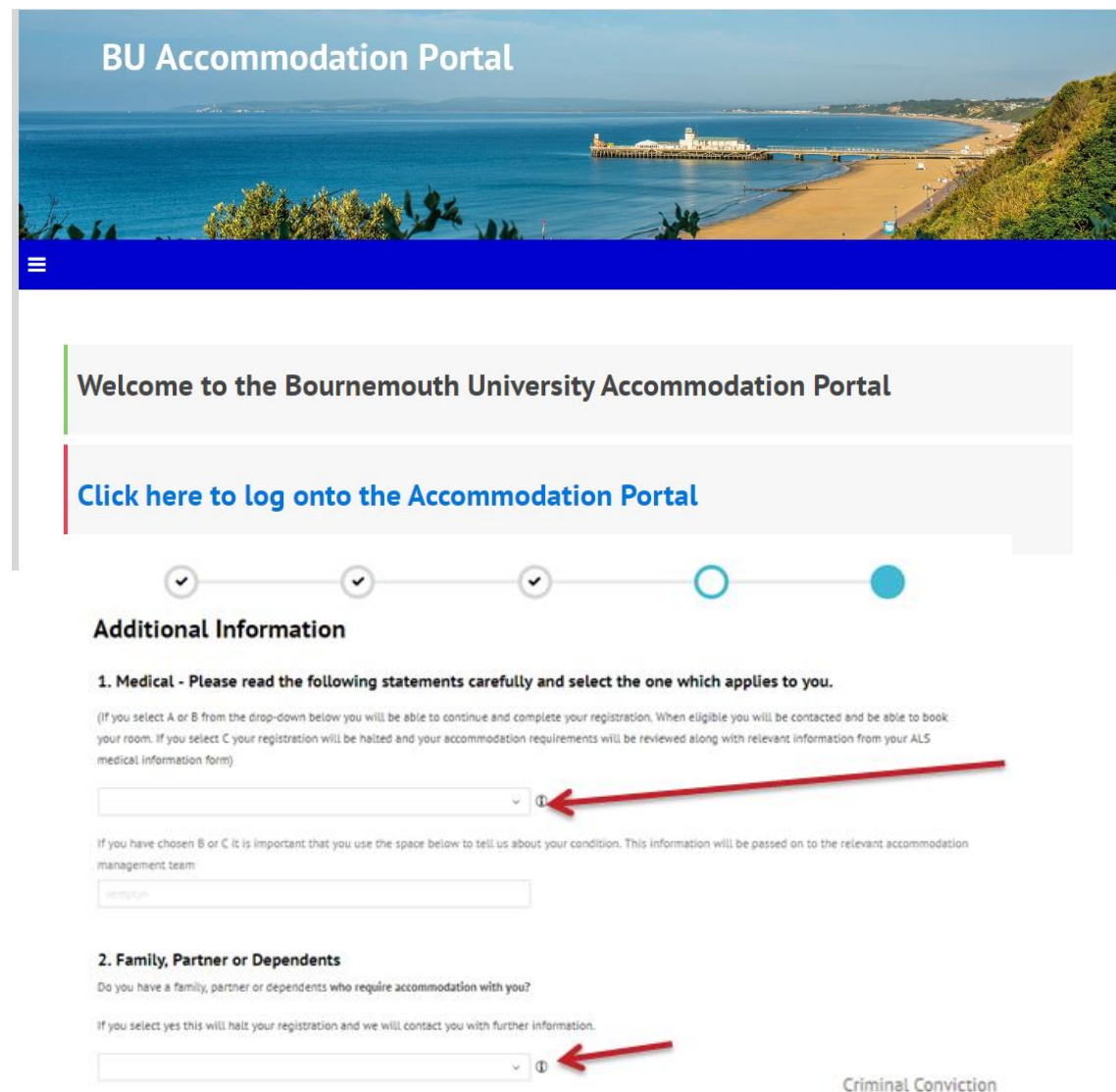
Booking accommodation

- Book accommodation through the BU Accommodation Portal
- Go to the BU website for more details:
www.bournemouth.ac.uk/accommodation
- Accommodation guarantee



Stage 1 - Registering your interest in Accommodation

Once you have made BU your Firm choice, we will email you information about Stage 1 (Registering your interest in accommodation)



The screenshot shows the 'BU Accommodation Portal' interface. At the top is a banner image of a coastal scene with a pier. Below the banner is a blue navigation bar with a hamburger menu icon. The main content area has a light grey background and contains the following elements:

- A welcome message: 'Welcome to the Bournemouth University Accommodation Portal'.
- A link: 'Click here to log onto the Accommodation Portal'.
- A progress indicator with five circles. The first three are grey with checkmarks, the fourth is blue with a white circle, and the fifth is solid blue.
- A section titled 'Additional Information'.
- Section 1: '1. Medical - Please read the following statements carefully and select the one which applies to you.' It includes a note about selecting A, B, or C and a dropdown menu. A red arrow points to the dropdown menu.
- Section 2: '2. Family, Partner or Dependents'. It asks if the user has family, partner, or dependents who require accommodation. It includes a note about selecting yes and a dropdown menu. A red arrow points to the dropdown menu.

BU Accommodation Portal

Welcome to the Bournemouth University Accommodation Portal

[Click here to log onto the Accommodation Portal](#)

Additional Information

1. Medical - Please read the following statements carefully and select the one which applies to you.

(If you select A or B from the drop-down below you will be able to continue and complete your registration. When eligible you will be contacted and be able to book your room. If you select C your registration will be halted and your accommodation requirements will be reviewed along with relevant information from your ALS medical information form)

If you have chosen B or C it is important that you use the space below to tell us about your condition. This information will be passed on to the relevant accommodation management team:

2. Family, Partner or Dependents

Do you have a family, partner or dependents who require accommodation with you?

If you select yes this will halt your registration and we will contact you with further information.

Criminal Conviction

Stage 2 – Booking your accommodation

- Use these filters to narrow searches, you will only see rooms available

If you want Single Sex it is in the Attributes filter

- Click to see others who have already booked

Stage 2 - Personal Profile Room Selection Booking Summary Contract Deposit Payment Page RealEx Lightbox Receipt

✓ ○ ● ● ● ● ● ●

Welcome to the Room Selection Page

Please use the filters below to look for available rooms in all of our accommodation.
Please note that the vast majority of our flats are mixed gender and the rooms have been labelled, therefore you will only see rooms available to your gender.
If you want Single Sex accommodation then you can use the filter to only see those rooms.

Staying between 21/09/2019 and 11/07/2020 for Term: New Student starting Sept 2019 (40-42wk)

Room Types

- ☐ Premium Ensuite
- ☐ Premium Room Access
- ☐ Premium Studio
- ☐ Standard Ensuite
- ☐ Standard Non Ensuite
- ☐ Studio
- ☐ Value Ensuite

Locations

- ☐ Bailey Point
- ☐ Chesil House
- ☐ Corfe House
- ☐ Cranborne House
- ☐ Dorchester House
- ☐ Home Park
- ☐ Lansdowne Point

Attributes

- ☐ Floor 1
- ☐ Floor 10
- ☐ Floor 11
- ☐ Floor 12
- ☐ Floor 13
- ☐ Floor 2
- ☐ Floor 3

Bailey Point Flat 003-7

1 [Calculate Total](#)

Bailey Point Floor 01, Flat 003, Bailey Point

First Floor ensuite room in 7 bedroom flat with shared kitchen

[Show Flat Occupants](#)

SELECT

Bailey Point Flat 009-7

1 [Calculate Total](#)

Bailey Point Floor 02, Flat 009, Bailey Point

Second Floor ensuite room in 7 bedroom flat with shared kitchen

[Show Flat Occupants](#)

SELECT

Bailey Point Flat 015-7

1 [Calculate Total](#)

Bailey Point Floor 03, Flat 015, Bailey Point

Third Floor ensuite room in 7 bedroom flat with shared kitchen

[Show Flat Occupants](#)

SELECT

Bailey Point Flat 021-7

1 [Calculate Total](#)

Bailey Point Flat 027-7

1 [Calculate Total](#)

Bailey Point Flat 033-7

1 [Calculate Total](#)

Getting moved in

Stage 1 – when BU is your **firm choice**

Register your interest in accommodation

Stage 2 – Reserve your room

UF – pay and sign to secure your room

CF – wait for results before securing your room

We've got this covered. Your rent includes...

- ✓ **12-month unlimited BU bus pass***
 - ✓ Covers all university travel
 - ✓ Includes some local buses too
- ✓ **Internet usage****
- ✓ **Bills** (gas, electric, water, sewerage)

*Providing unlimited travel on selected services. You can opt-out of this feature, reducing rental payment by £285 (2023 entry figure).

**Additional services/premium packages are available in some halls.

Getting moved in

**So, you're moving away from home
– maybe for the first time?**

- ✓ **Prepare**
- ✓ **Get things covered**
- ✓ **Space saver**

Learn more on our website
www.bournemouth.ac.uk/accommodation





**Bournemouth
University**



The best start.

Fees & funding for first year undergraduates

#BUOpenDay #BelongAtBU

Please note: The figures shown are for 2022 entry.

What we'll talk about

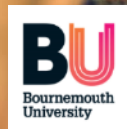
Fees & financial support

- Tuition Fee Loan
- Maintenance Loan
- NHS Learning Support Fund



BU support: scholarships & bursaries

- BU Maintenance bursary up to £2,400 (up to £3,200 if studying Foundation Year)
- BU Care Leavers bursary up to £9,000 (up to £12,000 if studying Foundation Year)
- Sports Scholarship – up to £5,000
- Music Scholarship – worth up to £600



STUDENT FINANCE EXPLAINED

2023 TO 2024

The cost of study

£9,250

per year, Honours
degree courses

- **Tuition Fee Loan** to cover full amount
- Students do not start repayment until income is **over £25,000*** a year, **£2,083** a month, **£480** a week
- Fees will not change for duration of course
- You can pay the university directly in a single lump sum or two instalments

10%

Student family discount for each year of study
If an immediate family member studies at BU or is a graduate of BU.

The cost of living

Up to
£9,978
living away from
home, not in London

- Maintenance Loans are for day-to-day costs – typically accommodation, travel, domestic bills etc. They are paid in three instalments (**one** each term).



45%

Non-income assessed



Up to 55%

Income assessed

Up to
£8,400
living at home

Up to
£13,022
Living away from
home, in London

This information is provided in good faith using the latest information available from Student Loans Company. The Maintenance Loan amounts shown are for 2023/24 entry. For the latest information, visit www.gov.uk/student-finance

The cost – if you take a placement year

Placement year
tuition fee
(2023 entry)

£1,850

**Maintenance Loans are available
whilst you are on a paid or unpaid
placement and are non-means tested.**

£2,267

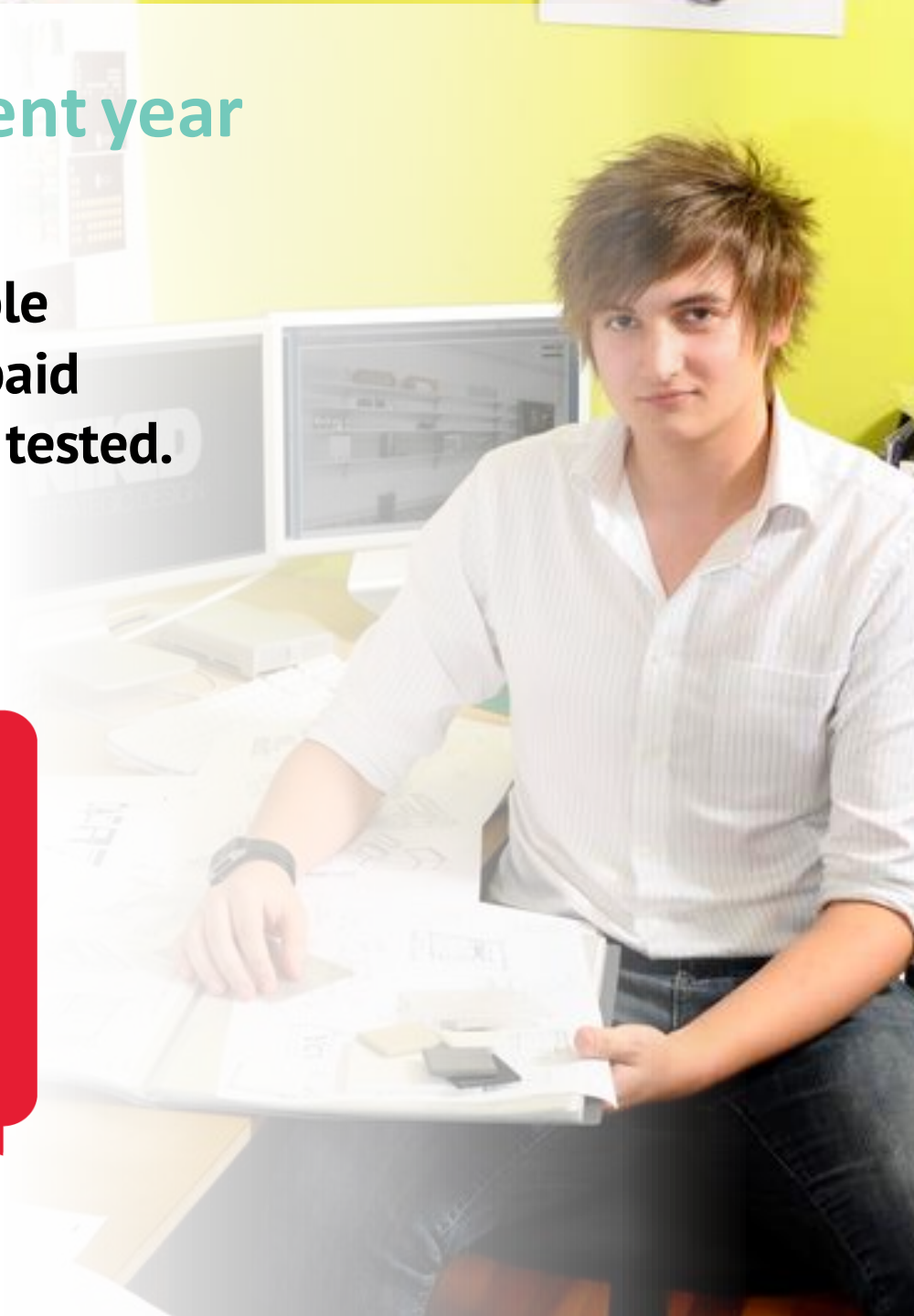
Living at home

£3,022

Placement
elsewhere in UK or
abroad

£4,244

Placement in
London



Paying it back

- You will start repaying your **combined loan amount automatically** (by HMRC) in the **April following graduation** or leaving the course, only **when you earn over the threshold**.
- If any amount remains after **40 years**, it is written off.

Interest accrues on the loan
from the moment you take it
out.

Likely to be

RPI

9%

Of your income above
£25,000 (before tax)

for **40** years (max.)

Yearly income before tax	Income from which 9% will be deducted	Approximate monthly repayment
£25,000	£0	£0
£28,000	£3,000	£22
£29,500	£4,500	£33
£31,000	£6,000	£45
£33,000	£8,000	£60

Amounts shown are correct at time of delivery.

Additional support from the Government

- **Childcare grant:**

- Up to £188.90 a week for 1 child
- Up to £323.85 a week for 2 children or more

- **Parents' Learning Allowance:**

- Up to £1,915 a year to support learning costs (doesn't affect benefits or tax credits)

- **Adult Dependents' Grant:**


- Up to £3,354 a year

- **Child tax credit:**

- Up to £3,235 a year for each child for the 2023 to 2024 tax year (proposed)

- **Disabled Students' Allowances:**

- Up to £26,291 a year for support. Help with day-to-day costs of studying that are related to your disability, specialist equipment, a non-medical helper allowance



Non-repayable
additional
support



Apply as part of your
student finance
application

Where to start



GOV.UK

www.gov.uk/student-finance

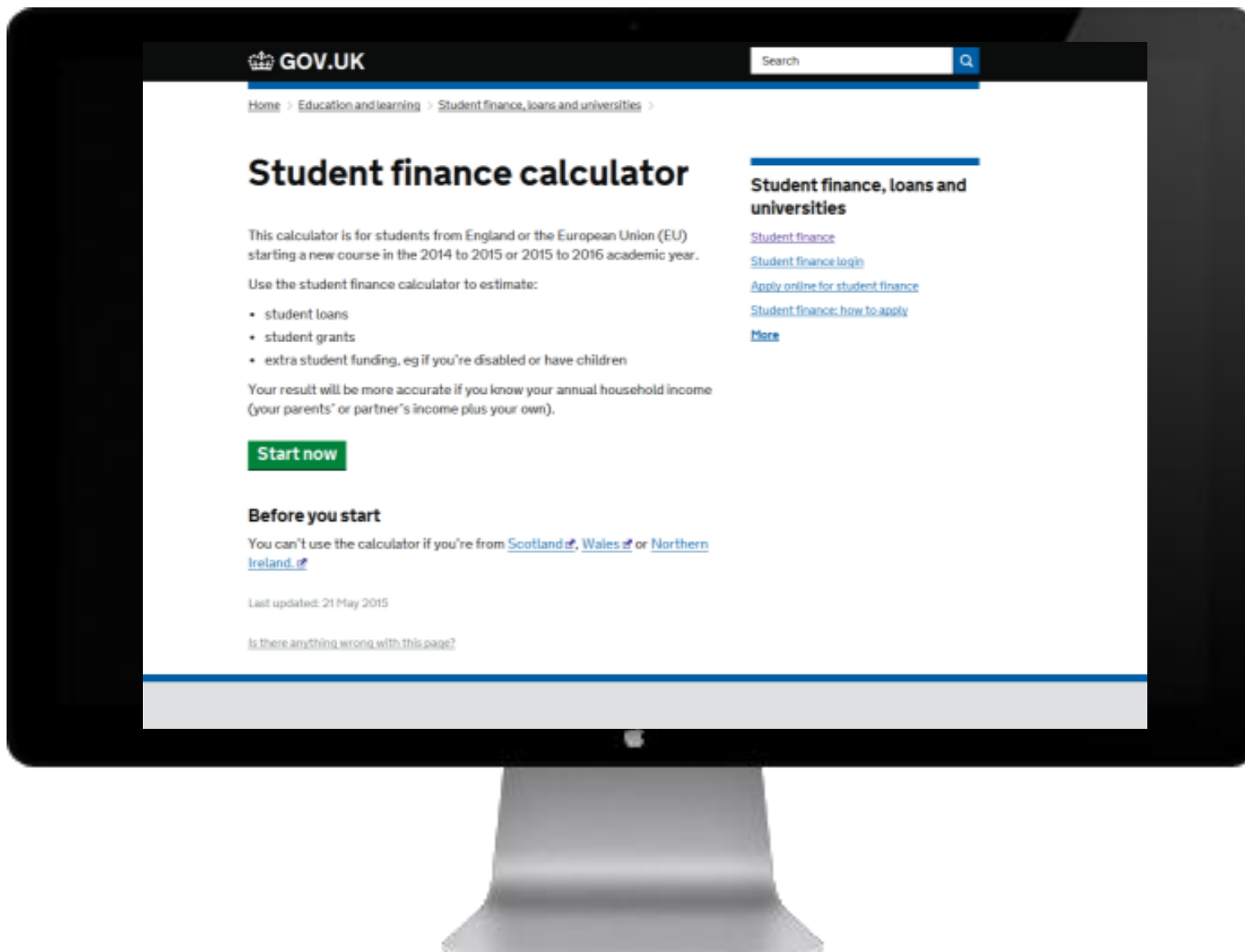
- **Student finance calculator**
- **Information & guidance**
- **Student finance application**

What you'll need:

- ✓ Details of household income
- ✓ UK passport number (enter online) or other identity documents (may need to be sent)

SAAS
Funding your future

student finance **wales**
cyllid myfyrwyr **cymru**



Bursaries & Scholarships from BU

- ✓ This support is **directly from BU** – it's additional to your student loan
- ✓ BU should be your **firm choice** to be considered for any of this funding
- ✓ They're **non-repayable**

BU Maintenance Bursary

Up to **£2,400***

Over 3 years of study
(£800 each year)

For 'Home' fee status applicants
living in England with a household
income up to £16,000

BU Care Leavers Bursary

Up to **£9,000****

Over 3 years of study
(£3,000 each year)

For 'Home' fee status applicants
living in England who have been in
care of the Local Authority for a
period of 3 months or more, with a
household income up to £16,000

*Up to £3,200 for those studying
a Foundation Year

**Up to £12,000 for those
studying a Foundation Year

Terms, conditions & exclusions apply.
See www.bournemouth.ac.uk/bursaries



BU Sport Scholarship

Up to **£5,000**

Supporting elite athletes
representing their sport at a
national or junior level

Terms & conditions apply
See www.bournemouth.ac.uk/ug-scholarships

BU Music Scholarship
Benefits package worth
approximately **£600**

per year

Supporting outstanding musicians and
singers who raise the profile of BU's
performance-based output



**Bournemouth
University**

Contact

BU: 01202 961916

futurestudents@bournemouth.ac.uk

Student Finance England: 0300 100 0607

Things to remember

2023 entry

- Check out your accommodation options
- Apply for student funding and explore Scholarships and Bursaries

September

- Get ready to start uni!

2024 entry

From March

Apply for your accommodation when your place is Unconditional Firm

May

- Student funding applications must be submitted by 31 May and explore Scholarships & Bursaries
- Make your university choice

September

- Get ready to start uni!

The university has consulted the latest available information in the production of this presentation for delivery in **Summer 2023** but cannot be held liable for its accuracy. You should take advice based on your personal circumstances before entering into any financial commitment. If you are joining us from Wales, Scotland or Northern Ireland, please see the relevant funding bodies for details of Maintenance support. The latest information can be found at:

www.gov.uk/studentfinance www.bournemouth.ac.uk/ug-funding