

The logo for Bournemouth University, featuring the letters 'BU' in a stylized, white, outlined font.

Bournemouth
University

A young woman with long dark hair, wearing a bright yellow leather jacket and a black lanyard, stands smiling in front of a large, vibrant, and colorful mural. The mural features various abstract shapes, including a large red circle, a yellow star, a rainbow, and a stylized figure. The background is a mix of red, yellow, blue, and white.

Employability, Global Experiences & Placements

#BelongAtBU
#BUOpenDay

Employability at the heart of the BU experience

“91.3% of graduates employed/in further study within 15 months of graduating” (Graduate Outcomes Survey, 2019/20)



- Courses driven by our vision of Fusion - combining education, research and professional practice
- Every student has the opportunity to undertake a work placement or some practical experience
- Strong professional orientation and accreditation
- International experiences.

Careers support throughout and beyond your studies

CareersBU



- Face to Face & remote Careers Adviser appointments
- Faculty Based Support
- Events & Fairs
- Access to Volunteering opportunities
- Access to graduate job vacancies
- Webinars & Workshops
- Online Career assessment tools
- CV checker, Mock interview Simulator

Graduate Skills Programme

- A structured, optional programme open to all BU students
- Combines live workshops with online learning and resources and gives recognition for extra-curricular achievements
- Interactive masterclasses delivered by employers and academics focused on supporting students to develop their professional and personal skills ready for the workplace

BU
Bournemouth
University

CareersBU

Open to all
BU students

Physical
and virtual
workshops
available

Delivered
by industry
experts

Skills masterclasses

Supporting you to build in-demand
skills for today's job market

- Sustainability
- Human compassion
- Digital
- Professional
- Global

Book Via **MyCareerHub**
mycareerhub.bournemouth.ac.uk/students/events



What is a placement?

- Industry work experience
- Short placement option (course dependent) in summer following year 1
- Mandatory or optional
- Long 'sandwich' placement year usually for a minimum of 30 weeks (course dependent), can be made up of multiple approved short placements.

Why do a Placement ?

- Experience of professional environment
- Learn how employers recruit
- Learn to network
- Experience working in your chosen industry
- Final year work will benefit from your experience
- Placements enhance your employment opportunities



Placements: at home or abroad?



WARNER BROS.

Small companies or local well-known brands

- **Most** placements are within small to medium sized companies (SMEs), with up to 250 employees
- Many of these are local to the University, with others across the UK
- Students **also** get placements with large organisations in the local area including, JPM, LV and NHS
- Students across courses at BU find placements with local organisations through, friends, family and word-of-mouth as well as our placement listings



Helping you identify placement opportunities and prepare to apply

- Placement team in Faculties
- Sessions from past placement students / Peer Assisted Learning (PALs)
- 1-1 & group Placement Coordinator sessions covering professional skills
- Employer guest lectures
- Access to academics' contacts
- Events
- Societies (develop skills required in workplace)
- Placement opportunity fund



Placement PALs

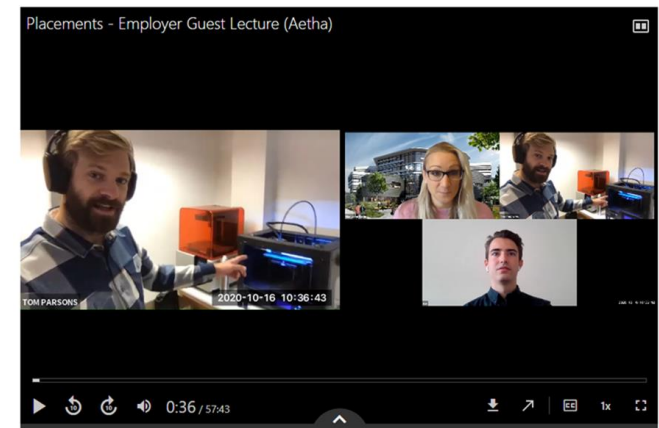


Peer support



Group Sessions

GUEST LECTURE - AETHA DESIGN ▾



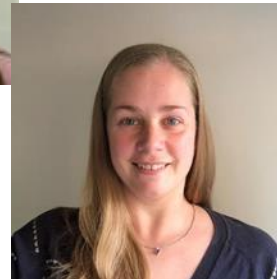
Employer Guest Lectures

Our Placement Team!

A wealth of professional experience covering all areas of BU study
Supporting you before, during and after your placement!

*“My **Placement Development Advisor**, has been really helpful. She has been updating my course via group email, social media and responded to individual queries I have had. The placement review meetings were really useful to ensure that I stayed focused to get the most out of my placement”*

‘Martha’ BA (Hons) Communication & Media



*“The **placement coordinators** were very understanding of the current situation of the pandemic and how this adversely affected my chances of a placement. They persevered in helping, by assisting me to restructure my CV to make it more professional and suitable to what I was applying for, to writing a cover letter and to checking in now and then via Zoom. This helped the most, as it made sure that progress was being tracked”* *‘Faith’ BSc (Hons) Nutrition*



Placement profile: local placement - Poole Hospital

- Jess
- BSc (Hons) Operating Department Practice
- Mandatory placement
- Poole Hospital
- Faculty of Health and Social Sciences

Some courses have Placements inter-woven with lecture-based study

Let's see how Jess found her placement at Poole Hospital NHS site!

#MyPlacementStory



*“An important feature of the programme is the hospital that you will be based at and **practical work placements** will make up just over **50%** of your time on the course. This percentage of placement is a UK statutory requirement for this course. Your placements will include a range of acute settings that give students a good opportunity **to develop their skills**”.*
(BU Website)

Placement profile: international placement



BSc (Hons)
Environmental
Science

Zach Boakes: Placement year co-founding volunteering organisation North Bali Reef Conservation

- Sandwich Placement in Year 3
- **Creation** of village plastic **recycling centre** and community **education program**
- Construction and deployment of over **6000 artificial reef** structures which are deployed and restore habitats in an area of previously destroyed corals.
- **Managing** over **200** international **volunteers**
- **Finalist** in BU's '30 under 30' Showcase of young Talent
- Placement Prize winner
- Now project manager and research coordinator completing a **PhD** at BU

“Zach’s work has left a long-lasting impact on our organisation, especially in terms of research. Zach is currently undertaking a PhD, and is running a long-term artificial reef research programme. He works closely with academics from BU, as well as local researchers to publish this research, which has since informed Indonesian policy makers.”

Ketut De Sujana Mahartana, Co-Founder, North Bali Reef Conservation



The Common Ground Podcast
(2020) Spotify

Short placements – examples from Science & Technology



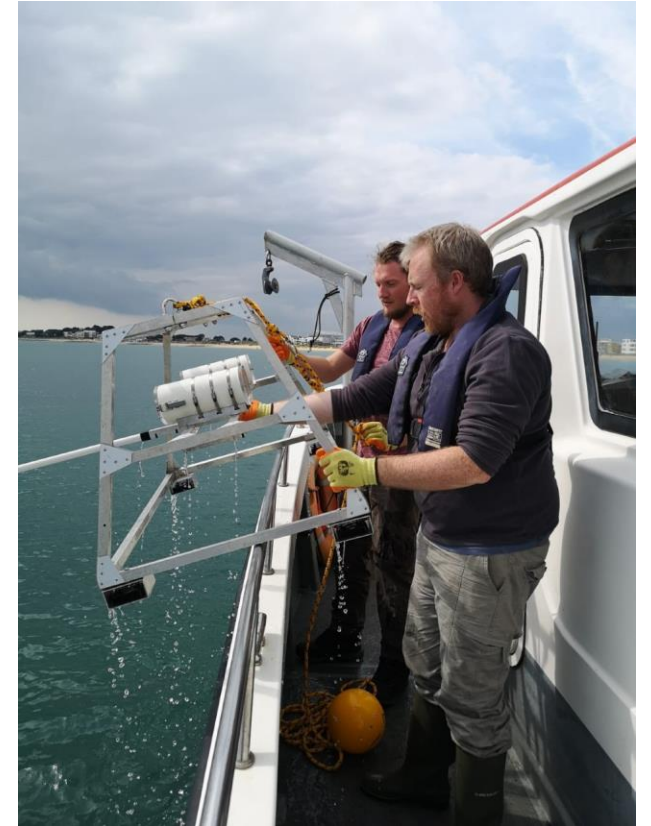
Charlie working at the House of Parliament on environmental impact issues with his local MP



Gaz working on Environmental surveys in Dorset



Becky in the Seychelles working on marine conservation



Sam, marine research with BU in Poole harbour

It's competitive out there! - Going Global -

Develop your **global competence** with a number of opportunities as part of your course, and opportunity for work, study or extra-curricular activities here or abroad!



Study



Study a **semester abroad** at a university that has been especially selected by BU

Study in English, at a top partner university. **Study abroad** for a semester during your **second year**.

Work



Undertake a **work placement abroad** as part of your placement year, placement option or elective (FHSS)

Funding available from Global Engagement team, support with valuable international experience.

Extra-curricular



Other international activities that are not part of your course but will help you to develop global skills within your chosen field.

Funding opportunities available to allow for research trips, summer schools, volunteering, field trips, or short courses.

But why..

Spending time abroad **builds confidence** as well as other attributes



But why..

WHY SHOULD STUDENTS SPEND TIME ABROAD?



SKILLS FOR SUCCESS

International placements develop important global skills for students, such as:



- ✓ **INTERCULTURAL AWARENESS**
- ✓ **LANGUAGE SKILLS**
- ✓ **KNOWLEDGE OF OTHER COUNTRIES**
- ✓ **CONFIDENCE**
- ✓ **TOLERANCE**
- ✓ **SELF-AWARENESS**
- ✓ **SOCIABILITY**
- ✓ **PROBLEM-SOLVING**
- ✓ **DECISIVENESS**
- ✓ **ADAPTABILITY**
- ✓ **CURIOSITY**

These skills are indicators of both personal and professional success.⁴



Funding to support international experiences

TURING

SCHEME

Funded by the UK's global
programme to study and work abroad



Erasmus+



The big questions

How much does placement year cost?

- There is a **reduced tuition fee** whilst you are on placement for the support of our teams and access to campus resources whilst you are away
- **Reduced maintenance loans** are available whilst you are on a paid or unpaid placement are non-means tested
- Many placements are paid, but if you are unsure or want advice on taking unpaid work – check with your Placement Coordinator can advise you

Other questions

- Will you find my placement for me?
- What if I can't find a placement?
- Where will I live?



Email us!





**Bournemouth
University**



Questions? We've got answers.

Find us at the Student Services stand and the Global Opportunities stand in the Exhibition!