



Welcome to



**Bournemouth
University**

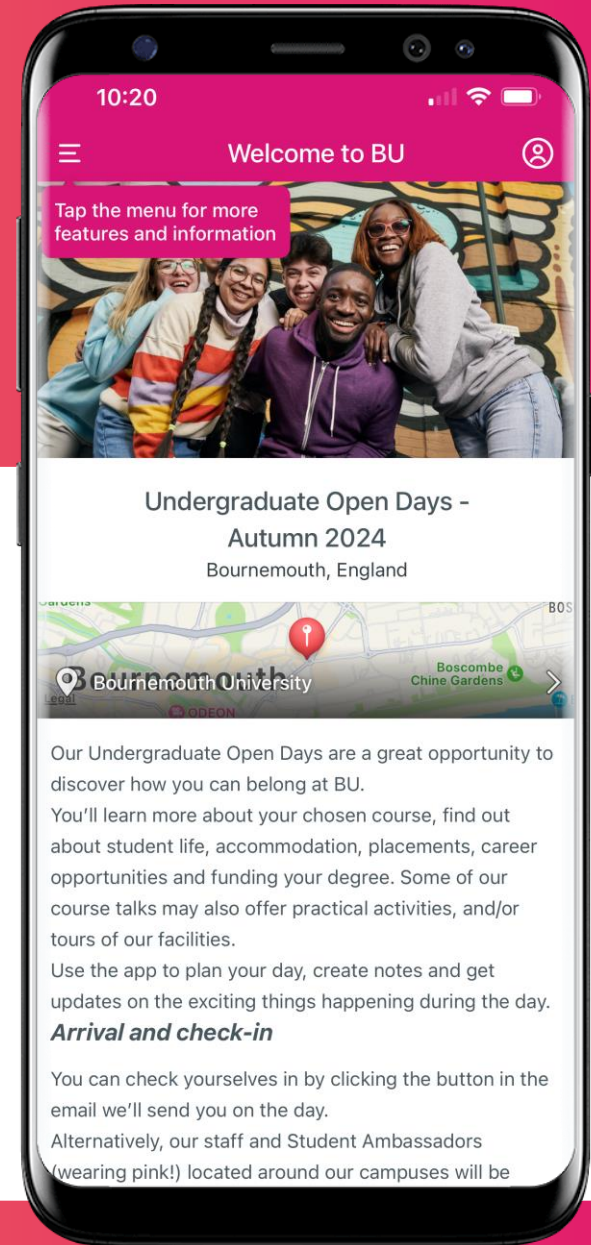
Download the Open Day app



Search Bournemouth University in your App Store or scan the QR code

Download the Bournemouth Uni Official App

Open the 'Undergraduate Applicant Open Days – Spring 2025' guide



Why BU?



Our vision

...to be recognised worldwide as a **leading university for inspiring learning, advancing knowledge and enriching society** through the fusion of education, research and practice



18,000 students

2,500 international students from across the world (130+ countries)



Across two sites

Talbot Campus & Lansdowne Campus, and partner institutions

- We're ranked as a top 10 university in the UK in the Times Higher Education Impact Rankings 2024 and joint 39th globally.
- We're 95th in the world and 3rd in the UK in the Times Higher Education Young University Rankings 2024.
- We're in the top 500 in the 2025 Times Higher Education World University Rankings.

Kate Adie

CBE DL, BU Chancellor



Our university

95%

of BU graduates would
recommend us to
prospective students

BU Alumni survey 2020, based on 1,195 respondents

88.7%

of all BU undergraduate
graduates are employed or in
further study within 15 months
of graduating

Graduate Outcomes 2021/22 survey results published by the Higher Education Statistics Agency (HESA). HESA open data is published under the (CC BY 4.0) licence.

100%

of undergraduate students
have the opportunity to
undertake a work placement



We are...



Professionally orientated

Professional accreditations
Placements
Working with industry



Incredible learning opportunities

Live research projects
Guest lectures
Study abroad



Research that makes a real difference

Helping people live better for longer
Contributing to the creative and cultural industries

94%
of research
rated as
internationally
-recognised
or above*

Why we love Bournemouth



Student safety

Top 10

Dorset remains in England's top ten safest areas

Office for National Statistics (ONS) January 2025

-2.9%

The fall in crime compared to the previous year

Office for National Statistics (ONS) January 2025

Secured Environments

BU is certified by the police as an organisation that shows that they have adopted six key principles for protecting themselves against crime

Some of the ways we provide a safe and secure environment:

- 24 hours a day, 365 days a year security team
- CCTV and other appropriate security systems
- A dedicated police officer patrolling campus in liaison with BU security personnel
- Buses that run past the last lecture finishing times
- Door entry cards/keys for accommodation
- Dedicated nightclub on Lansdowne Campus – The Old Fire Station – a safe place to go for a night out.

Campuses to be proud of



Talbot Campus



Campuses to be proud of



Lansdowne Campus



Facilities to be proud of



Chapel Gate:
Multi-sports facility



Sustainability at BU

What we've achieved so far:

2,000+

solar panels have enabled us to avoid releasing over 550 tonnes of CO₂e

Joint **1st**

for SDG 12 Responsible Consumption and Production.*

Joint **39th in the world**

For our contribution to the UN Sustainable Development Goals.*

Refill campus

Use your water bottle at one of our 45 refill points on campus.



Support & wellbeing

✓ AskBU – General Support

✓ On-site childcare facilities

✓ Additional Learning Support

✓ Careers advice & MyCareerHub

✓ On-site Police team

✓ Subject Librarians & Experts

✓ Faith & Reflection Service

✓ Advice (Students' Union)

✓ Student Wellbeing

✓ ResLifeBU



Academic Skills Hub

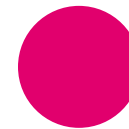
To help you enhance the skills you'll need throughout your time at BU, we've created an Academic Skills Hub that's packed with online resources and opportunities for face-to-face or virtual support.



Academic writing



Critical thinking



Digital skills



Finding sources



Healthy study habits



Maths



Presentation and seminar skills








Referencing



Statistical analysis



Joining us as a Mature student...

-  Almost a fifth of our undergraduate student population is over 21
-  Tools to help you study on the go and from home
-  A variety of accommodation options & private rentals
-  On-campus childcare facilities, Surgery and Faith & Reflection Service
-  SUBU Advice

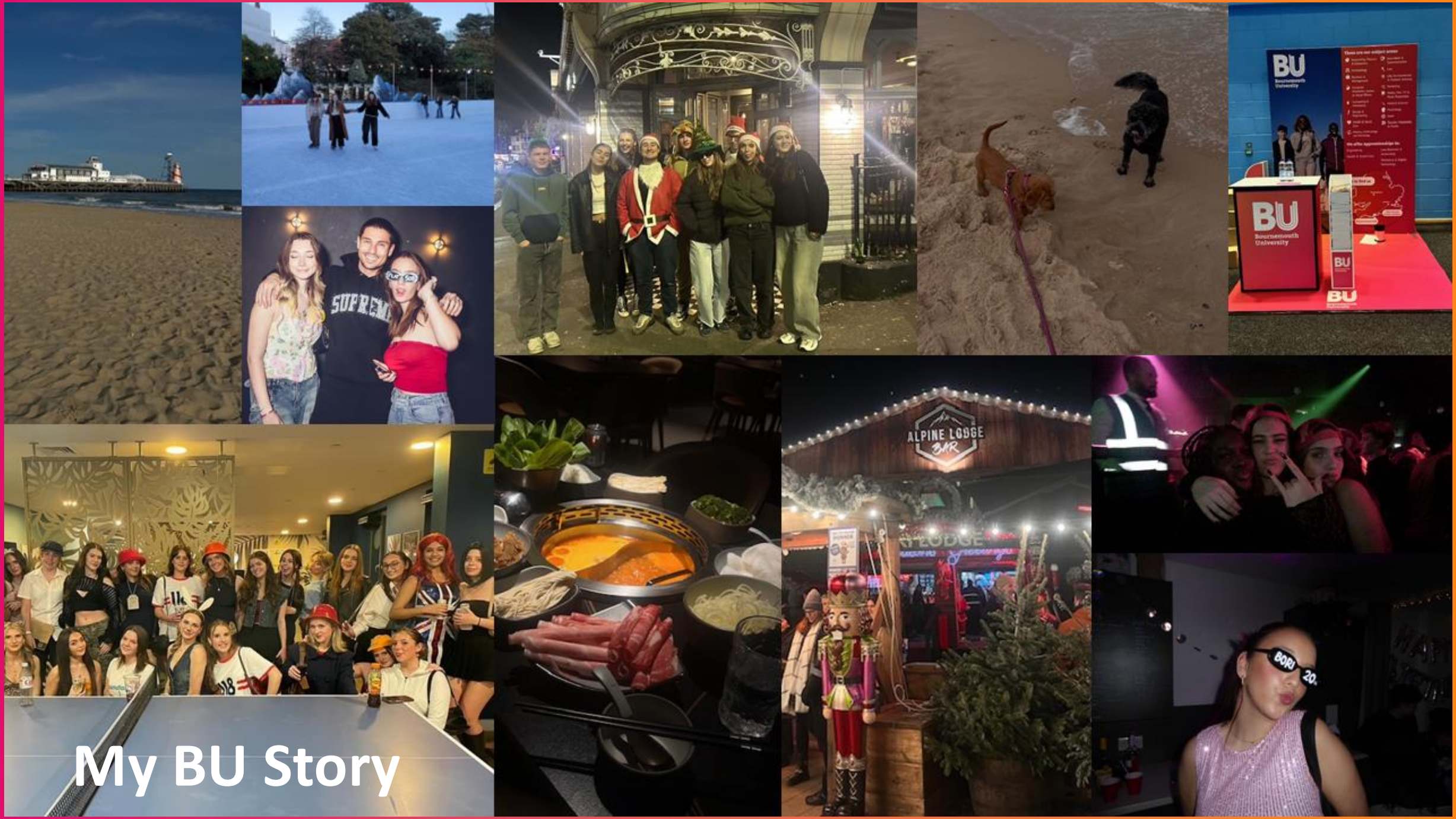
10% student
family discount*



20% graduate discount
on further study*

*Terms and conditions apply





My BU Story





Your induction to BU

-  Welcome email series
-  Welcome mobile application
-  Access to Unibuddy Community
-  SUBU We Are Freshers Guide, with free Freshers wristband
-  A packed schedule of welcome events on campus
-  ResLifeBU events and Facebook Groups



Your exclusive Unibuddy Community

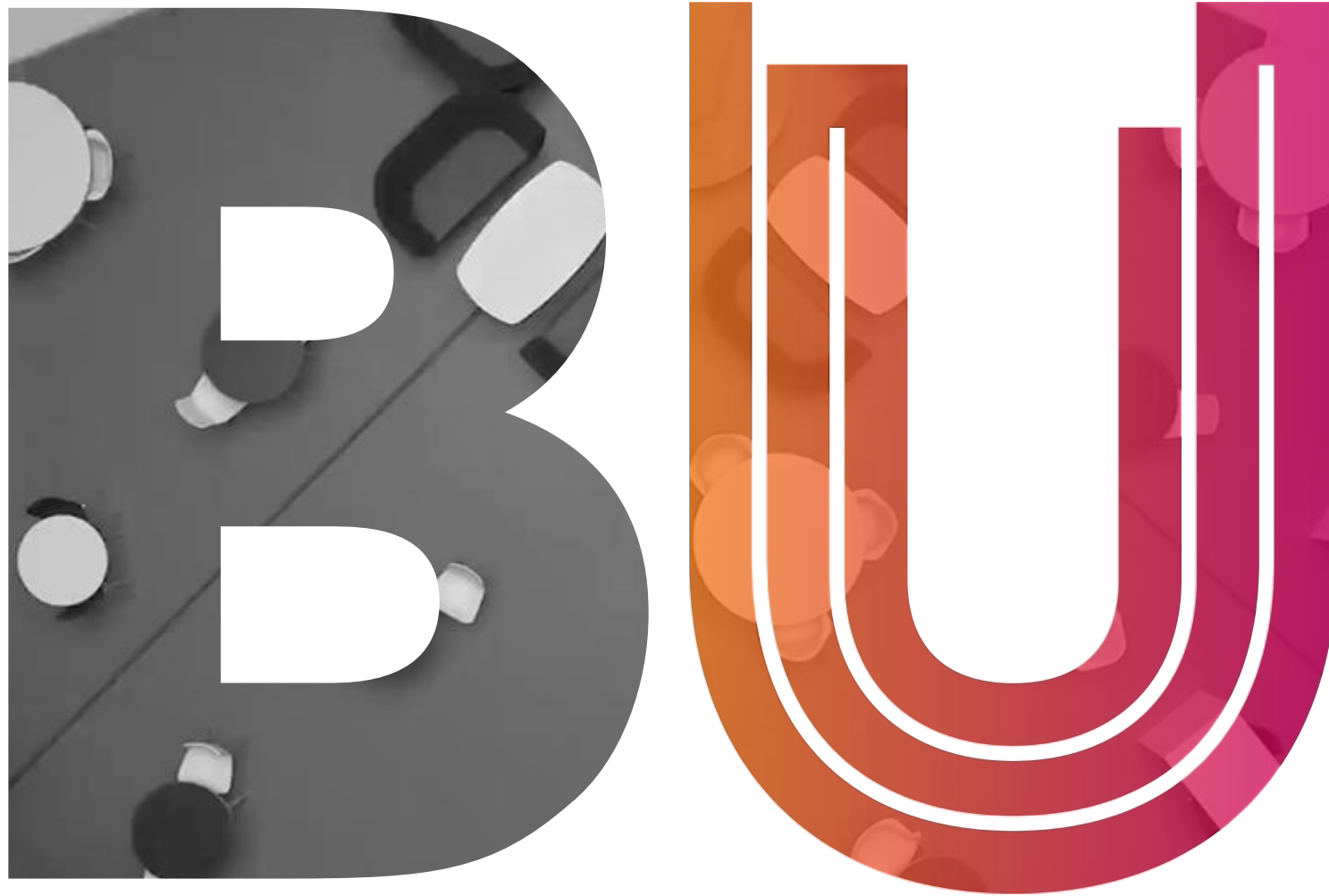
If you're an offer holder,
you'll be invited to join BU's
Official Unibuddy
Community

- Connect with other applicants and get chatting
- Ask each other questions
- Seek reassurance for anything you're worried about





My Time at BU



Contact us:

 01202 961916

 futurestudents@bournemouth.ac.uk