



**NATURALLY  
OPEN**



Welcome to  
Bournemouth  
University





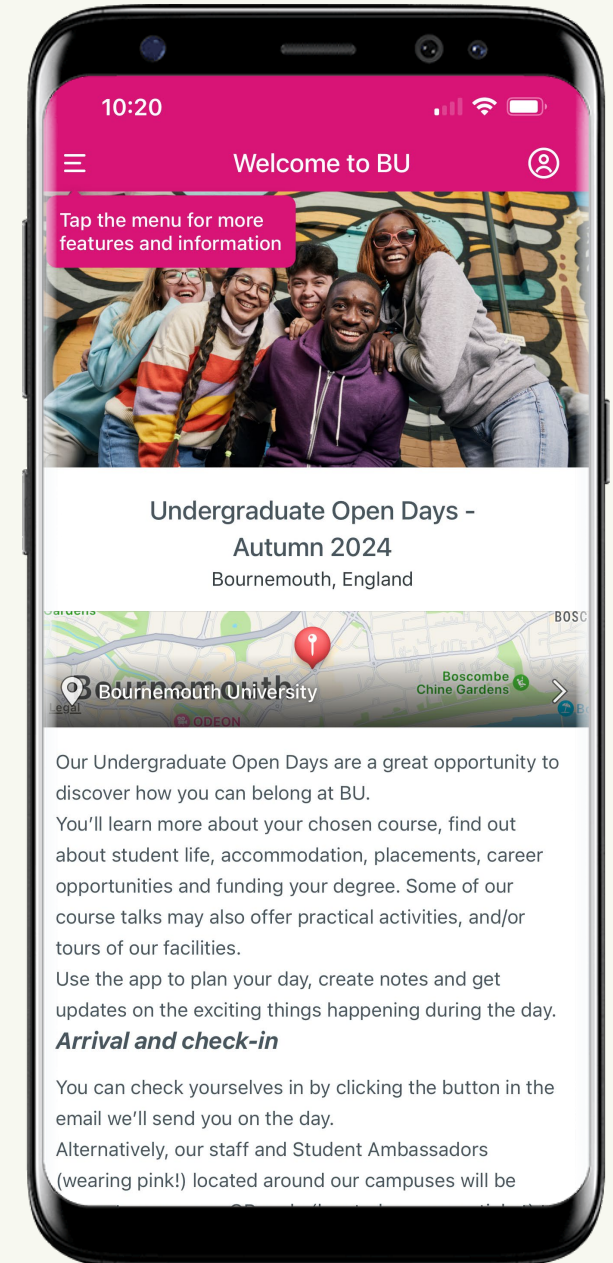
**BU**  
BOURNEMOUTH  
UNIVERSITY



# Download the Open Day app

- Search Bournemouth University in your App Store or scan the QR code
- Download the Bournemouth Uni Official App
- Open the 'Undergraduate Open Days' guide

Scan the QR code to download the app



# Why BU?



## Learn and change

Change for you, change for your community.

Whatever you want to do, be part of a learning community that strives to make an impact on our world.



## Find balance

Our campuses are a place you can belong – big enough to impress but small enough to feel at home.

Once uni is done for the day, feel the sand between your toes -just minutes from our Halls in town.



## You matter to us

You will be supported here, from day one.

Uni is a big transition. We get it. We're here for you every step of the way, including when you graduate.

# 89%

of graduates in work or further study

HESA Graduate Outcomes 2022/23



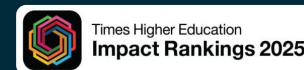
# 21<sup>st</sup>

for Research Quality and 41<sup>st</sup> overall in the UK



# 8<sup>th</sup>

in the UK and 59<sup>th</sup> in the World



# 1<sup>st</sup>

for Mental Health & Wellbeing Support



# Not our words. Yours.

## Amazing Facilities

“It has some amazing facilities, especially for my course. I have had the chance to use new equipment which I never have been able to before as well as incredible TV studios.”

## Friendly, Caring Uni

“Bournemouth University is such a friendly, caring uni, it's like part of one big "family" who look out for each other. Student support and wellbeing is a top priority.”

## Lots of Support

“Lots of support available for students covering different aspects such as mental health, careers, accommodation and finances.”

Reviews from Whatuni



# Our university

**95%**

of BU graduates  
would recommend us  
to prospective students

BU Alumni survey 2020, based on 1,195 respondents

**40+**

Bournemouth University  
graduates contributed to  
OSCAR nominated films in  
2025

**100%**

of undergraduate students  
have the opportunity to  
undertake a work placement



# You'll get...

21<sup>st</sup>

for Research Quality  
and 41<sup>st</sup> overall in the  
UK  
THE World Uni Rankings 2026



## Professionally - orientated degree

- Professional accreditations
- Placements
- Working with industry



## Incredible learning opportunities

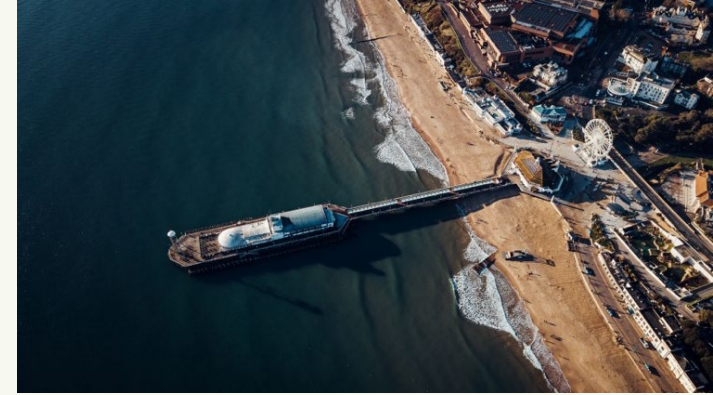
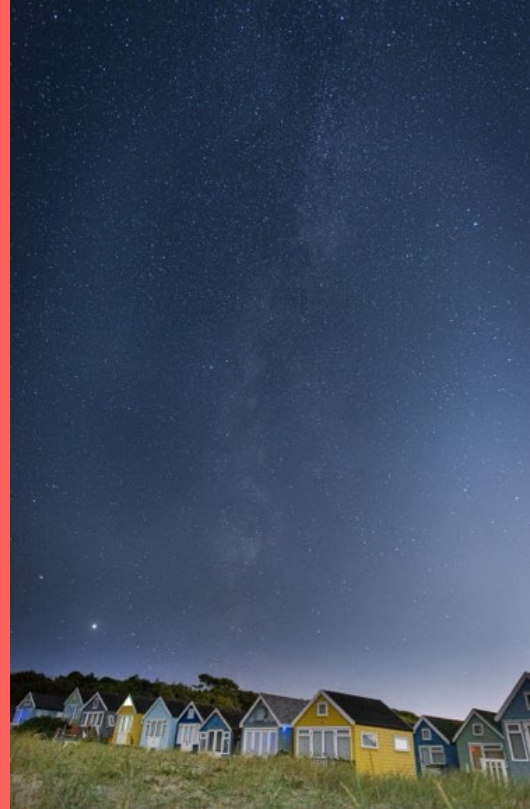
- Live research projects
- Guest lectures
- Study abroad



## Opportunities to support research that makes a real difference

- Helping people live better for longer
- Contributing to the creative and cultural industries

# Why you'll love Bournemouth



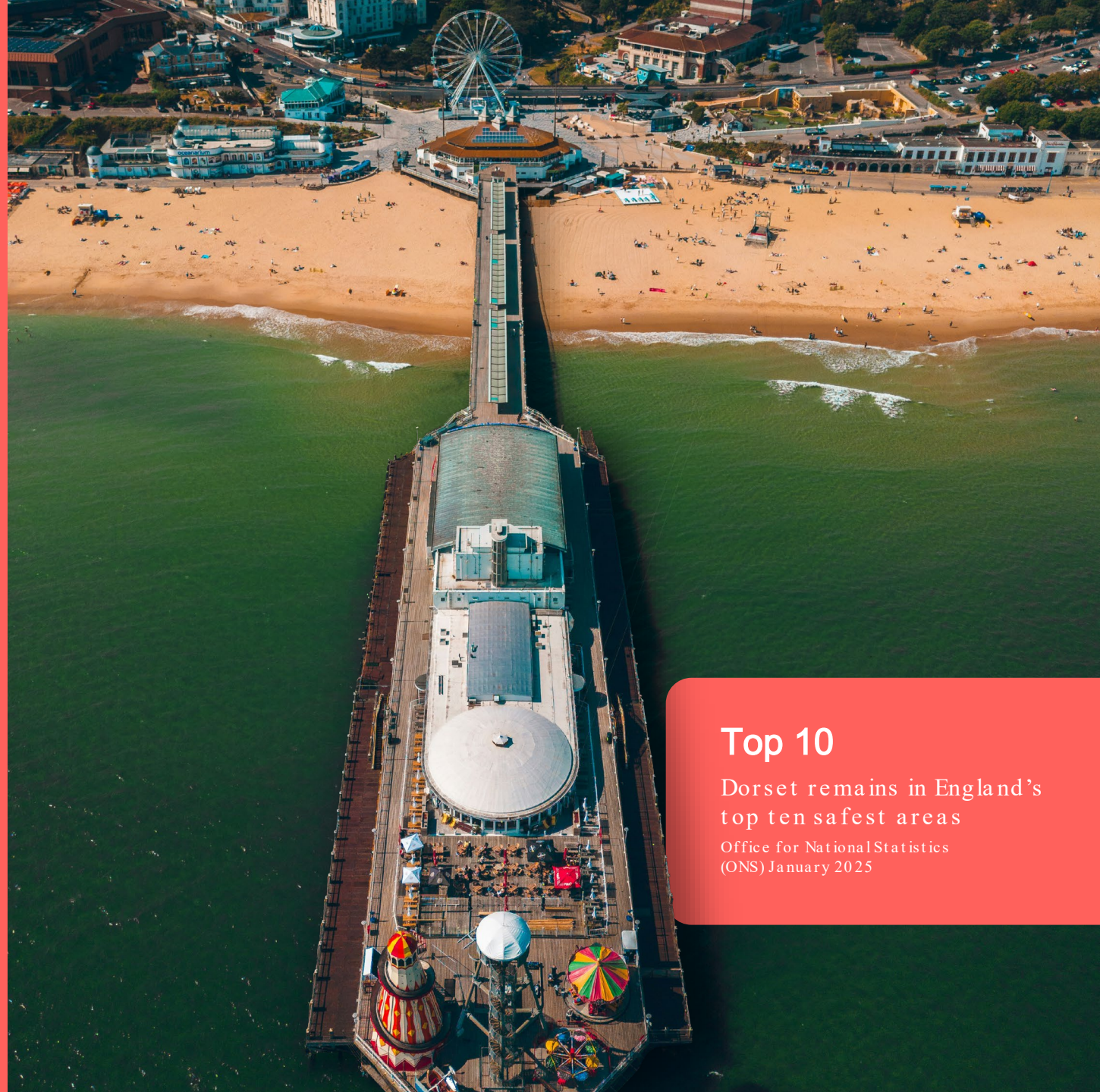
# Keeping our community safe

✓ 24/7 security and support

✓ On-site policing partnership

✓ Early & late UNIBUS service

✓ Old Fire Station: Student Union managed night club



## Top 10

Dorset remains in England's top ten safest areas

Office for National Statistics  
(ONS) January 2025

# Campuses to be proud of



Talbot Campus



# Campuses to be proud of



Lansdowne Campus



# Facilities to be proud of



**41st**

of 139 institutions in  
BUCS leagues 2024/25



**Chapel Gate**  
Multi-sports facilities

# Caring for our world

What we've achieved so far:



**2,000+**

Solar panels have enabled us to avoid releasing over 550 tonnes of CO<sub>2</sub>e.



**Joint 59<sup>th</sup> in the world**

For our contribution to the UN Sustainable Development Goals.



**SDG 12 Joint 15th**

Recognising our commitment to responsible waste and energy management



**The first 'Refill' campus**

Use your water bottle at one of our 45 refill points on campus.



# Wellbeing & support

✓ AskBU – General Support

✓ On-site childcare facilities

✓ Additional Learning Support

✓ ResLifeBU

✓ Careers advice and MyCareerHub

✓ Award-winning wellbeing provision

✓ Faith & Reflection Service

✓ Advice and guidance services

✓ Subject librarians and experts

**1<sup>st</sup>**

for Mental Health  
& Wellbeing Support



# Academic Skills Hub

To help you enhance the skills you'll need throughout your time at BU, we've created an Academic Skills Hub that's packed with online resources and opportunities for face-to-face or virtual support.



Academic writing



Critical thinking



Digital skills



Finding sources



Healthy study habits



Maths



Presentation and seminar skills



Referencing



Statistical analysis



# Join BU as a mature student

1/5

Of our students are over 21 when they start their studies - you're part of a community.



Supportive academic staff to help you reach your goals



Tools to help you study on the go and from home



Variety of accommodation options and private rentals



On-campus childcare, surgery and Faith and Reflection service



SUBU advice and support

10% student family discount\*



20% graduate discount on further study at BU\*



# A big welcome from **SUBU**

*YOUR STUDENTS' UNION AT  
BOURNEMOUTH UNIVERSITY*

**One of the best Students' Unions in the UK!**


**SUBU** Students' Union  
Bournemouth University





# The Old Fire Station

# The Student Centre

 Find us in the heart of Talbot Campus



# Get involved...





 The Old  
Fire Station

**DEAN'S** KITCHEN  
& BAR

THE ANNUAL FUNDRAISING  
**SUMMER BALL**  
2026



**STUDENTS'  
UNION**  
BOURNEMOUTH UNIVERSITY

Your voice, but louder!



Follow us on social media

@SUBUBournemouth



# Things not to miss today...

- ✓ Attend your course talk
- ✓ Stop by general talks – ‘Applications, Accommodation & Finance’ and ‘Student Life’ etc
- ✓ Visit the information stands
- ✓ Take a campus tour from the Student Centre or Poole House
- ✓ Accommodation tours at Talbot and Lansdowne Campus – details in your programme.



# Thank you

