



Welcome to



**Bournemouth
University**

#BUOpenDay

#BelongAtBU

Why BU?



Our vision

...to be recognised worldwide as a **leading university for inspiring learning, advancing knowledge and enriching society** through the fusion of education, research and practice



18,000 students

2,500 international students from across the world (130+ countries)



Across two sites

Talbot Campus & Lansdowne Campus, and partner institutions

- We're ranked as a top 10 university in the UK in the Times Higher Education Impact Rankings 2024 and joint 39th globally.
- We're 95th in the world and 3rd in the UK in the Times Higher Education Young University Rankings 2024.
- We're in the top 500 in the 2024 Times Higher Education World University Rankings.

Kate Adie

CBE DL, BU Chancellor



Our university

95%

of BU graduates would
recommend us to
prospective students

BU Alumni survey 2020, based on 1,195 respondents

88.7%

of all BU undergraduate
graduates are employed or in
further study within 15 months
of graduating

Graduate Outcomes 2021/22 survey results published by the Higher Education Statistics Agency (HESA). HESA open data is published under the (CC BY 4.0) licence.

100%

of undergraduate students
have the opportunity to
undertake a work placement



We are...



Professionally orientated

Professional accreditations
Placements
Working with industry



Incredible learning opportunities

Live research projects
Guest lectures
Study abroad



Research that makes a real difference

Helping people live better for longer
Contributing to the creative and cultural industries

94%
of research
rated as
internationally
-recognised
or above*

Why we love Bournemouth



Campuses to be proud of



Talbot Campus



Facilities to be proud of



Chapel Gate:
Multi-sports facility



Sustainability at BU

What we've achieved so far:

2,000+

solar panels have enabled us to avoid releasing over 550 tonnes of CO₂e

Joint **1st**

for SDG 12 Responsible Consumption and Production.*

Joint **39th in the world**

For our contribution to the UN Sustainable Development Goals.*

Refill campus

Use your water bottle at one of our 45 refill points on campus.



Support & wellbeing

✓ AskBU – General Support

✓ On-site childcare facilities

✓ Additional Learning Support

✓ Careers advice & MyCareerHub

✓ On-site Police team

✓ Subject Librarians & Experts

✓ Faith & Reflection Service

✓ Advice (Students' Union)

✓ Student Wellbeing

✓ ResLifeBU





My Bu Story



SUBU – Your Students' Union

WHATUNI?
STUDENT
CHOICE
Awards
2024

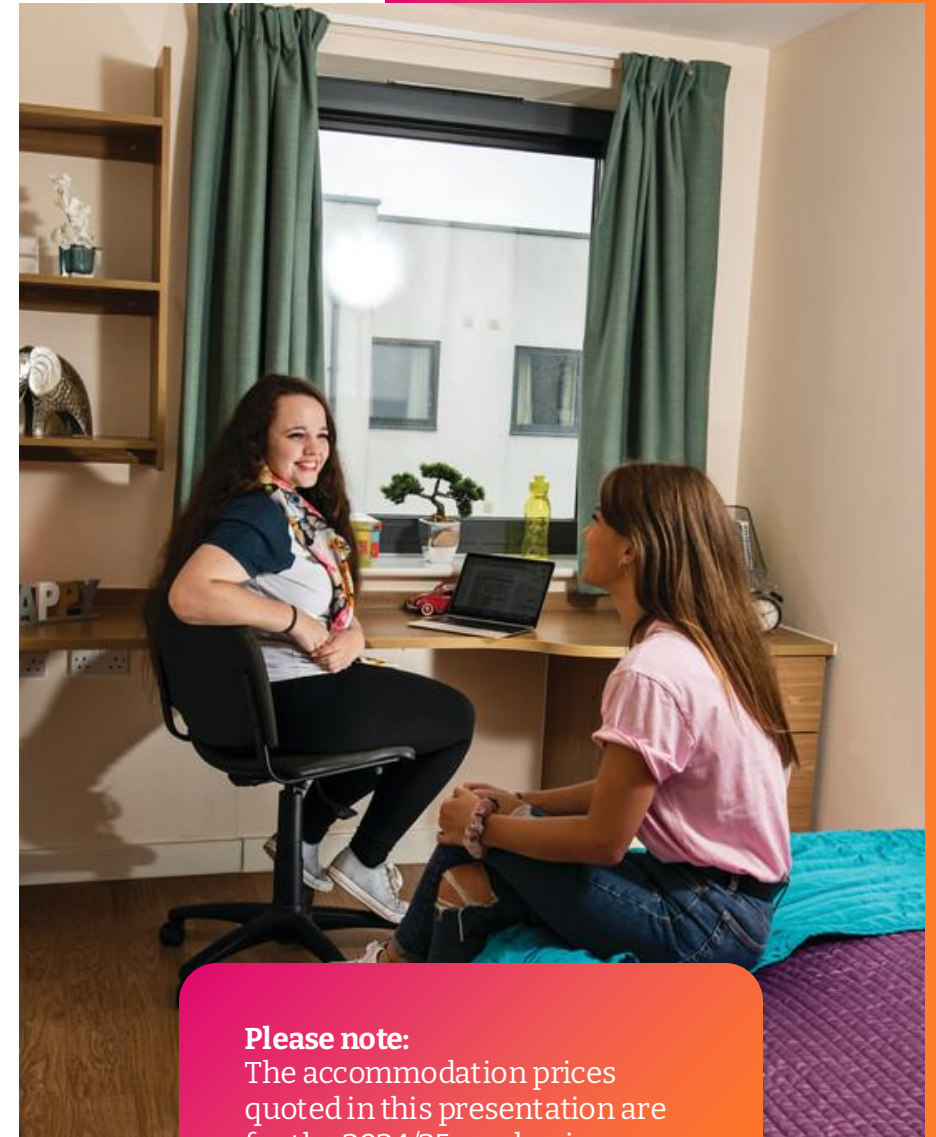
WINNER
STUDENTS' UNION
SOUTH WEST ENGLAND



Your home from home.

Accommodation for first
year undergraduate students.

#BUOpenDay
#BelongAtBU



Please note:

The accommodation prices
quoted in this presentation are
for the 2024/25 academic year.
For the latest information, please
refer to the BU website.

It's going to be great...

- A wide variety of accommodation options, both on and off-campus and in halls of residence or BU managed housing
- Good transport links to the university campuses from all sites
- Cycle storage
- Internet connection
- Laundry facilities



ResLifeBU

- Exclusive for those living in the BU accommodation portfolio
- Works around three core principles: **Social, Wellbeing and Skills**





Lansdowne Campus

15 mins

Talbot Campus by bus or
bike

10 mins

Town centre
The beach
Bournemouth Gardens

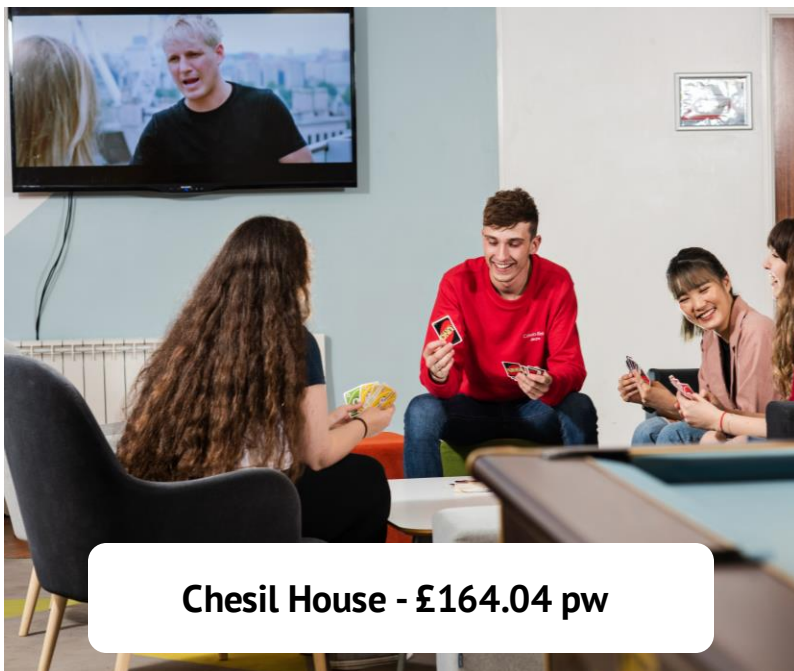
5 mins

Bournemouth Rail/Bus
station
Supermarkets and grocers
Between all halls blocks
The Old Fire Station

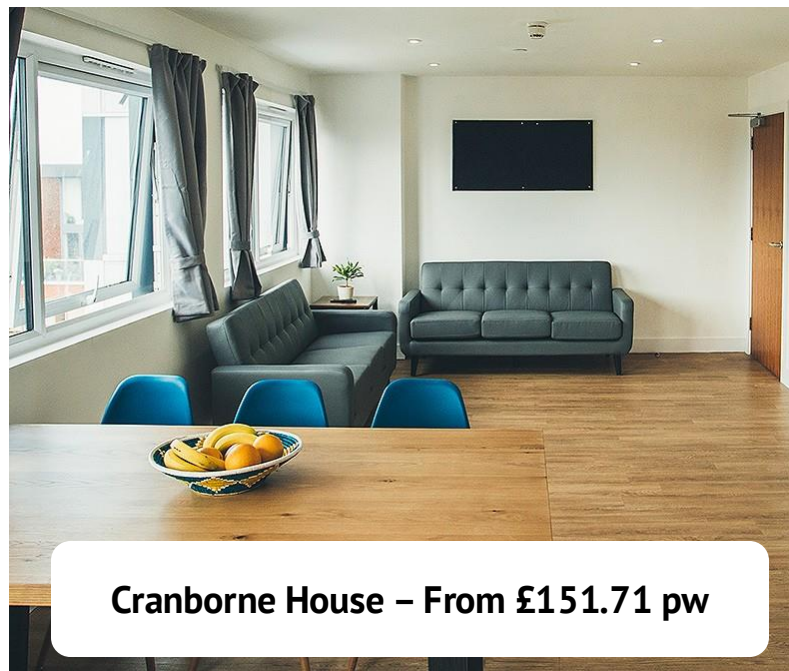
Lansdowne Halls

- Bailey Point
- Chesil House
- Cranborne House
- Dorchester House
- Lyme Regis
- Purbeck House





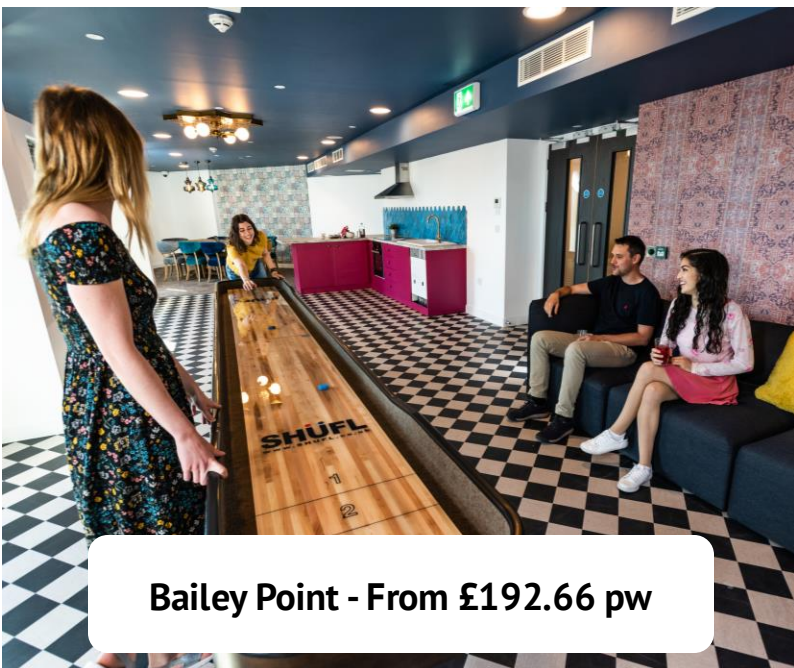
Chesil House - £164.04 pw



Cranborne House – From £151.71 pw



Lyme Regis House – from £173.83 pw



Bailey Point - From £192.66 pw



Dorchester House – from £177.83 pw



Lyme Regis House – from £173.83 pw



Corfe House

From £163.29 pw



Student Village

From £143.49 pw



Unilet shared houses

From £141.48 pw



Booking and getting moved in

Book accommodation through the BU Accommodation Portal

Go to the BU website for more details:

www.bournemouth.ac.uk/accommodation

Guaranteed accommodation – we can guarantee you a room in our accommodation, if you meet the terms of our Accommodation Guarantee

So, you're moving away from home - maybe for the first time?

Prepare

Get things covered

Space saver

Learn more on our website:

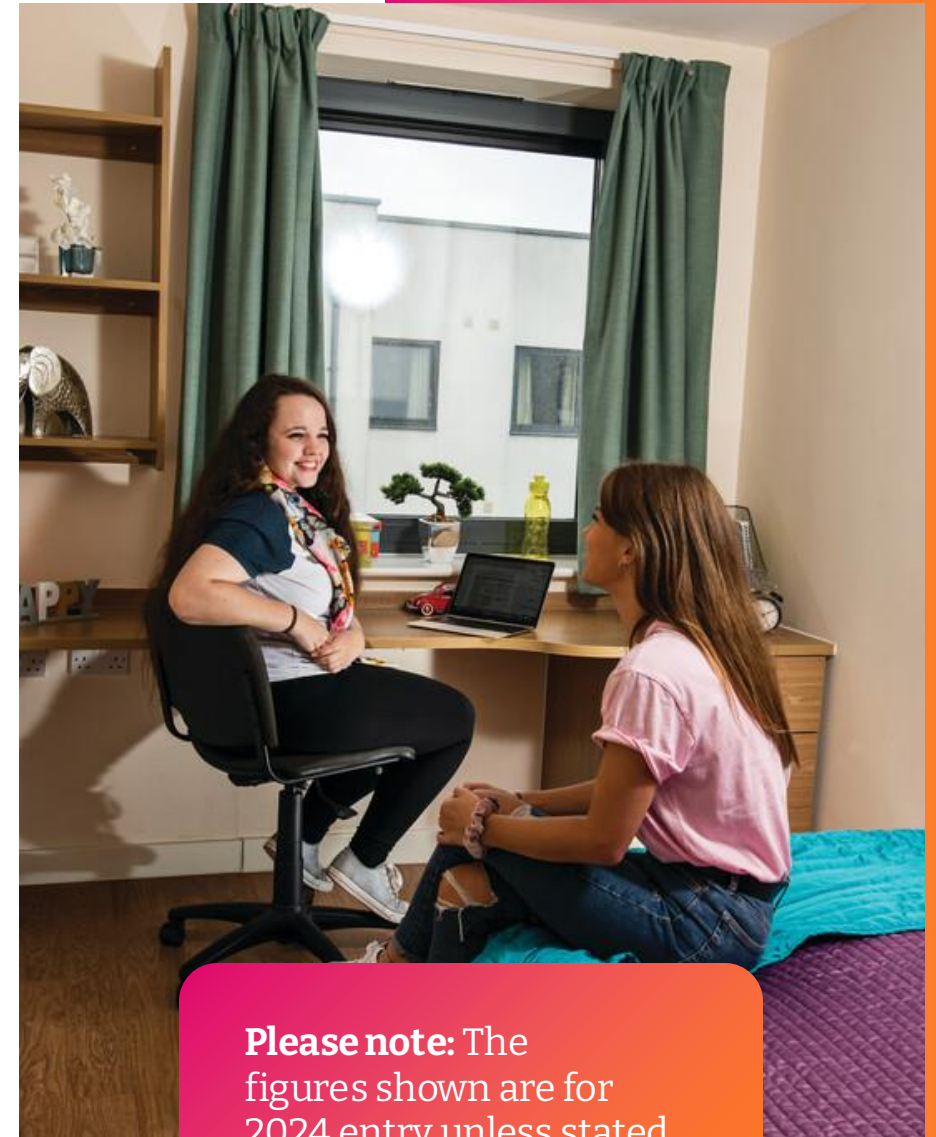
www.bournemouth.ac.uk/accommodation



The best start

**Fees & funding for first
year undergraduates.**

#BUOpenDay
#BelongAtBU



Please note: The figures shown are for 2024 entry unless stated otherwise.

The cost of study

- **Tuition Fee Loan** to cover full amount
- Students do not start repayment until income is over £25,000* a year, £2,083 a month, £480 a week
- You can pay the university directly in a single lump sum or two instalments

*Latest figures from Student Finance England.

**Foundation Year fees vary depending on whether they are classroom based or not – up to £9,535

£9,535**

**Per year,
Honours degree
courses (level 4)**

2025-26 entry

10%

**Student family discount for each year
of study**

If an immediate member of the family studies
at BU or is a graduate of BU.



The cost of living: Maintenance Loan

Maintenance Loans are for day-to-day costs - typically accommodation, travel, domestic bills etc. They are paid in three instalments (one each term)

Up to **£10,544**
living away from
home, not in London

Up to **£8,877**
living at home

- 45% is non-income assessed and up to 55% is income assessed

This information is provided in good faith using the latest information available from Student Loans Company. The Maintenance Loan amounts shown are for 2025/26 entry and based on a 30-week course. A Long Courses Loan is available if your course is more than 30 weeks and 3 days. For the latest information, visit www.gov.uk/student-finance



The cost – if you take a placement year

Maintenance Loans are available whilst you are on a paid or unpaid placement and are non-means tested.

Placement year
tuition fee

£1,850

£2,324

Living at
home

£3,098

Placement
elsewhere in
UK or abroad

£4,350

Placement in
London

For the latest information, visit www.gov.uk/student-finance



Paying it back

- You will start repaying your **combined loan amount automatically** (by HMRC) in the **April following graduation** or leaving the course, only **when you earn over the threshold**.

If any amount remains after 40 years, it is written off.

Yearly income before tax	Income from which 9% will be deducted	Approximate monthly repayment
£25,000	£0	£0
£28,000	£3,000	£22
£29,500	£4,500	£33
£31,000	£6000	£45
£33,000	£8,000	£60

9%

of your income
above £25,000
(before tax) for 40
years max

Interest accrues on the loan from the moment you take it out. Likely to be

RPI

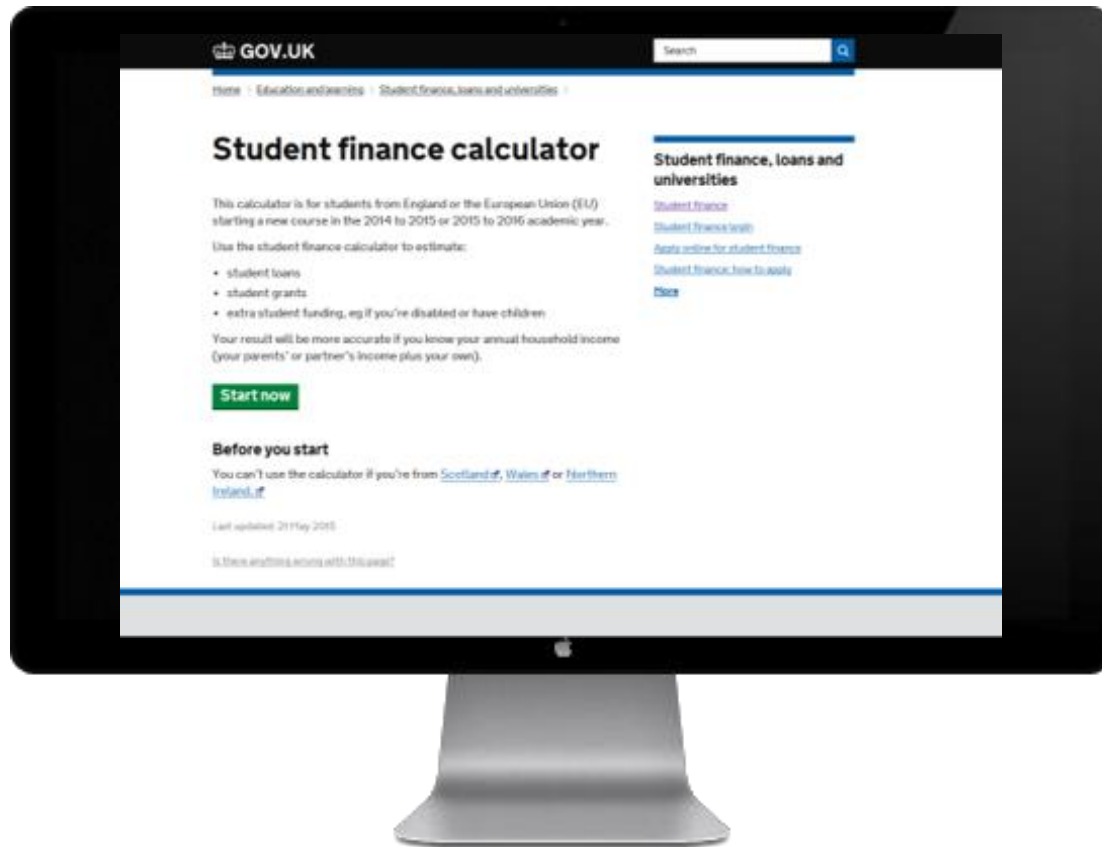
Additional support from the Government

**Non-repayable
additional
support**

**Apply as part of
your student
finance
application**

- **Childcare grant:**
 - Up to £193.62 a week for 1 child
 - Up to £331.95 a week for 2 children or more
- **Parents' Learning Allowance:**
 - Up to £1,963 a year to support learning costs (doesn't affect benefits or tax credits)
- **Adult Dependants' Grant:**
 - Up to £3,438 a year
- **Child tax credit:**
 - Up to £3,235 a year for each child for the 2023 to 2024 tax year
- **Disabled Students' Allowances:**
 - Up to £26,948 for support. Help with day-to-day costs of studying that are related to your disability, specialist equipment, a non-medical helper allowance.

Where to start




www.gov.uk/student-finance

- **Student finance calculator**
- **Information & guidance**
- **Student finance application**

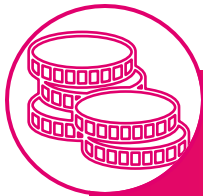
What you'll need:

- ✓ Details of household income
- ✓ UK passport number (enter online) or other identity documents (may need to be sent)

Bursaries & Scholarships from BU

- ✓ This support is directly from BU – it's additional to your student loan
- ✓ BU should be your firm choice to be considered for any of this funding
- ✓ They're non-repayable





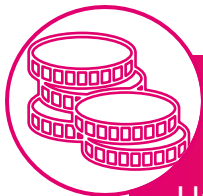
BU Maintenance Bursary

Up to £2,400* over 3 years of study (£800 each year) For 'Home' fee status applicants living in England with a household income up to £25,000.



BU Care Leavers Bursary

Up to £9,000** over 3 years of study (£3,000 each year) for 'Home' fee status applicants living in England who have been in the care of the Local Authority for a period of 3 months or more, with a household income up to £25,000.



BU Estrangement Bursary

Up to £9,000** over 3 years of study (£3,000 each year) for 'Home' fee status applicants living in England who have been estranged from their parents for 12 months or more, with a household income up to £25,000.

*Up to £3,200 for those studying a Foundation Year

**Up to £12,000 for those studying a Foundation Year

Terms, conditions & exclusions apply. See www.bournemouth.ac.uk/bursaries





BU Sport Scholarship

Up to £5,000 supporting elite athletes representing their sport at national or junior level.



BU Music Scholarship

Approximately £600 per year supporting outstanding musicians and singers who raise the profile of BU's performance-based output.

Terms & conditions apply.
See www.bournemouth.ac.uk/bursaries



Things to remember

2025 entry

From March

- Book your accommodation when your place is Unconditional Firm

May

- Student funding applications must be submitted by end of May and explore Scholarships & Bursaries
- Make your university choice

September

- Get ready to start uni!





My Time at BU



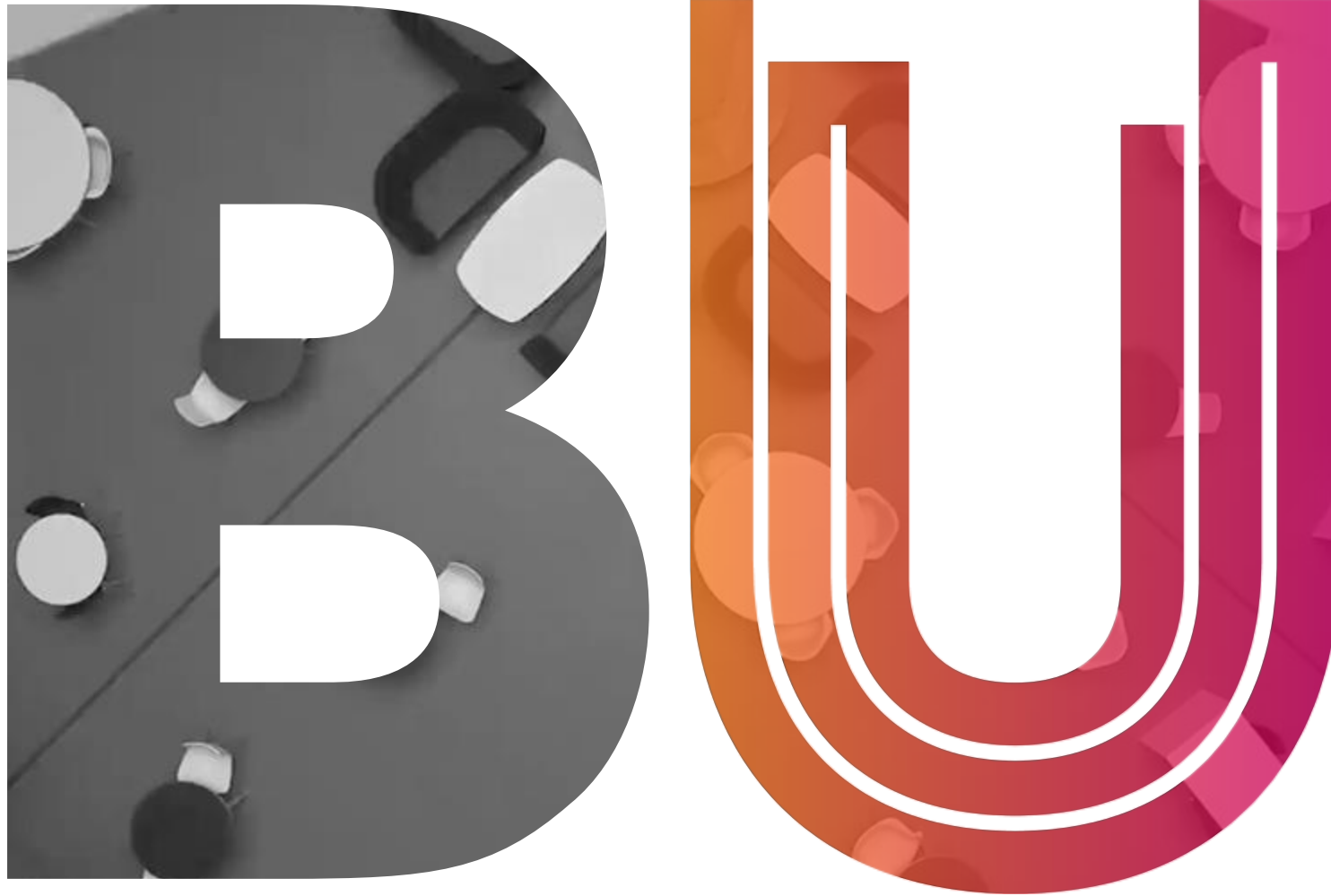
We've provided the latest information available at the time of delivery (January 2025).

For the latest information, visit our website: www.bournemouth.ac.uk

Contact us

📞 01202 961916

✉️ futurestudents@bournemouth.ac.uk



Contact us:

 01202 961916

 futurestudents@bournemouth.ac.uk