



Bournemouth
University

Degrees of *difference*

Welcome to BU

#BUOpenDay
#BelongAtBU

Check yourself in to the Open Day

Let us know you're here by:

- Clicking the button in the email we sent you this morning or
- Asking a member of staff or Student Ambassador to scan the QR code on your ticket.

We're really looking forward to welcoming you to our Undergraduate Open Day **this Saturday** and can't wait to show you around. Here are a few event essentials, including parking arrangements and a link to the programme to help you make the most of your day. You can find all the information [on our website](#) too.

Your main course of interest, MA Marketing Communications, will be represented at our **Talbot Campus** on the day.

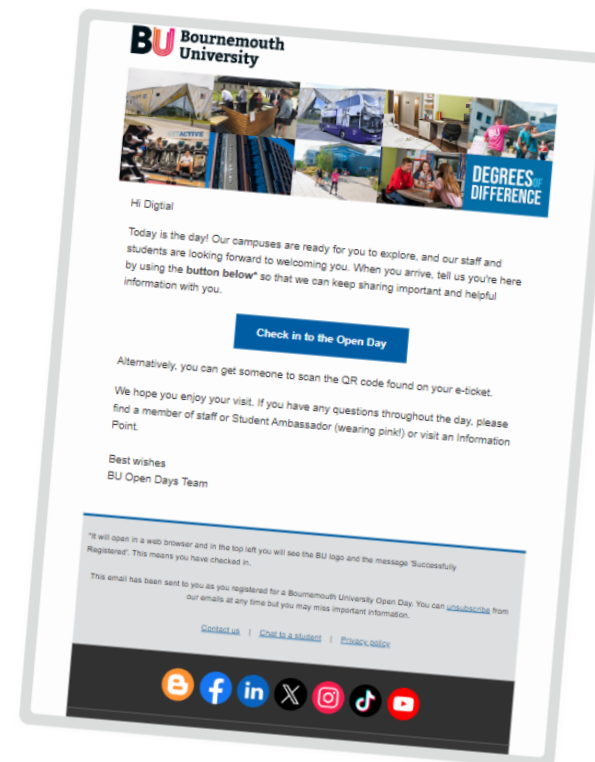
Click the button below to see the schedule for the event. There will also be printed copies available to pick up on the day.

[Download the programme](#)



Your ticket

This is your unique ticket. Look out for an email we'll send you on the day that will enable you to self-check-in. Alternatively, a member of staff or one of our Student Ambassadors (wearing pink) will be happy to scan this QR code when you arrive.



Why we love Bournemouth



Who are we

- Our vision - to be recognised worldwide as a leading university for inspiring learning, advancing knowledge and enriching society through the fusion of education, research and practice
- 18,000 students – 2,500 international students from across the world (130+ countries)
- Across two sites – Talbot Campus & Lansdowne Campus, and partner institutions

5th in the UK



Times Higher Education
Impact Rankings 2023

↑ 17 places in 2024 rankings (55th)



We're ranked in the top 50 in the world and 1st in the UK in the 2023 Times Higher Education (THE) Young University Rankings



**World
University
Rankings**
2023 TOP 300



**Times
Higher
Education**



Kate Adie CBE DL, BU Chancellor

Who are we



We offer incredible learning opportunities

- Live research projects
- Guest lectures
- Study abroad

We are professionally orientated

- Professional accreditations
- Placements
- Working with industry

Our research makes a real difference

- Helping people live better for longer
- Contributing to the creative and cultural industries

94% of our research was rated as internationally-recognised or above
Research Excellence Framework, 2021



Our university

95% of
BU graduates
would recommend
us to prospective
students

BU Alumni survey 2020, based on
1,195 respondents

91.1% of
all BU graduates
employed/in
further study
within 15 months
of graduating

Graduate Outcomes Survey, 2020/21



OFFICIAL HIGHER EDUCATION PARTNER



Every
undergraduate
student has the
opportunity to
undertake a
work placement

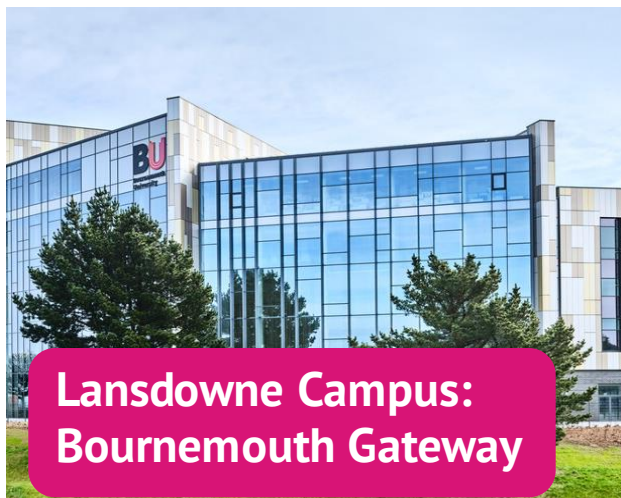


Award winning graduates worked
on Gravity, Inception & Avatar



More than **1,200** students undertook
an international experience between 2017
and 2019

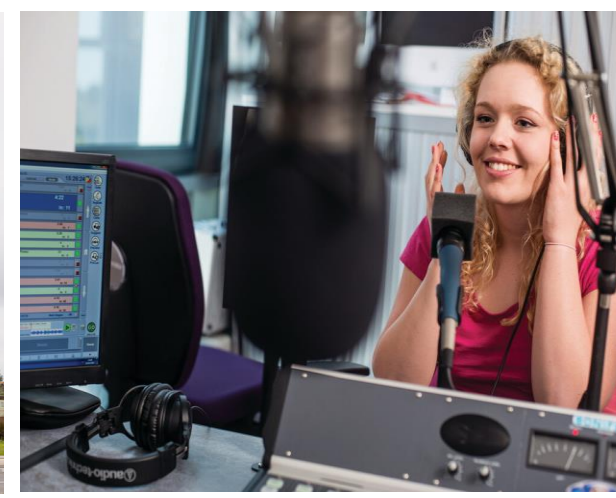
Campuses to be proud of



**Lansdowne Campus:
Bournemouth Gateway**



**Talbot Campus:
Poole Gateway**



Sustainability at BU

What we've achieved so far:

Our **1,500+** solar panels have enabled us to avoid releasing over 550 tonnes of CO₂e

6th
in the UK and 21st in the world for Climate Action*

1st
in the UK and 3rd in the world for Decent Work and Economic Growth*

Ranked in the
top 3%
of universities across the world for our contribution to the UK Sustainable Development Goals*

£9,000
awarded to students and alumni to start environmentally-friendly business within the BU-Santander Eco-Entrepreneurs Challenge

Our target is to achieve
net zero
emissions
by 2030/31



5th in the UK

Times Higher Education
Impact Rankings 2023

Support and wellbeing

- AskBU – general support
- Additional Learning Support
- On-site childcare facilities
- Careers advice & MyCareerHub
- Faith & Reflection Service
- Subject librarians & Library experts
- On-site Police team and personal safety events
- Student Wellbeing
- Student Advice (Students' Union)
- ResLifeBU



It's the right time...

- **Almost a fifth** of our undergraduate student population is over 21
- Tools to help you study on-the-go and from home
- A variety of accommodation options & private rentals
- On-campus **childcare facilities**, Medical Centre and Faith & Reflection Service
- SUBU Advice
- **10% student family discount**
- **20% graduate discount** on further study



Be represented



NERVEmedia



Be involved

SUBU
ACTIVITIES

SUBU
Advice

Free,
independent,
confidential
advice
for all BU students

academic : housing :
finance : employment benefits :
consumer : personal

Be supported

SUBU
COMMUNITY

SUBU **STUDENTS' UNION**
ADVICE

Be social



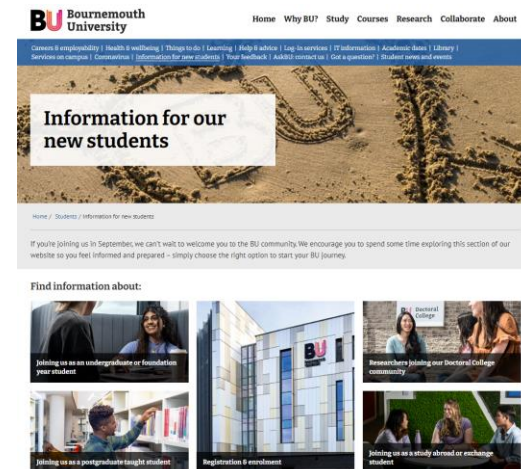


My Time at BU

Your induction to BU

- Welcome email series
- A packed schedule of welcome events on campus
- Welcome mobile application
- SUBU We Are Freshers Guide, with free Freshers wristband
- ResLifeBU events and Facebook Groups

www.bournemouth.ac.uk/arrivals



Your exclusive Unibuddy Community

If you're an offer holder, you'll be invited to join BU's Official Unibuddy Community.

- ☐ Similar to a chat room, your Unibuddy Community will help you connect with other prospective students hopefully joining you in September
- ☒ You will find a list of groups ranging in themes from your chosen course to accommodation, where you can ask each other questions
- ☒ Find out what others are looking forward to and seek reassurance if there is something you are feeling nervous about
- ☒ Your Unibuddy Community is a great place for to you enjoy and get chatting!

Scan the QR code to find out more or download the 'Unibuddy Community' app from the App Store or Google Play



**We've provided the latest information available
at the time of delivery
(Spring 2024).**

For the latest information, visit our
website: www.bournemouth.ac.uk

Contact us
01202 961916
futurestudents@bournemouth.ac.uk

