



**Bournemouth
University**

PG Open Afternoon: Postgraduate Research Degrees @ BU

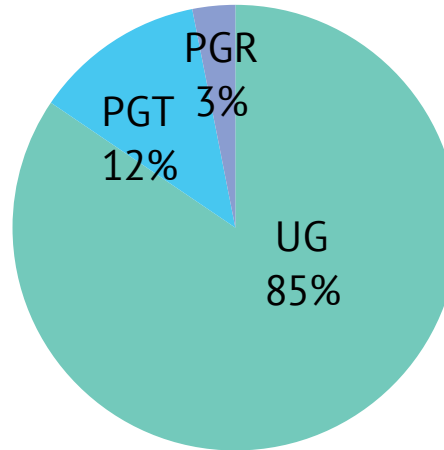
Dr Fiona Knight, Head of Doctoral College

Suzy Kempinski-Webber, Research Administrator

March 2023



- 18,000 students
- >15,000 UG students
- >2,000 PGT students
- >550 PGR students



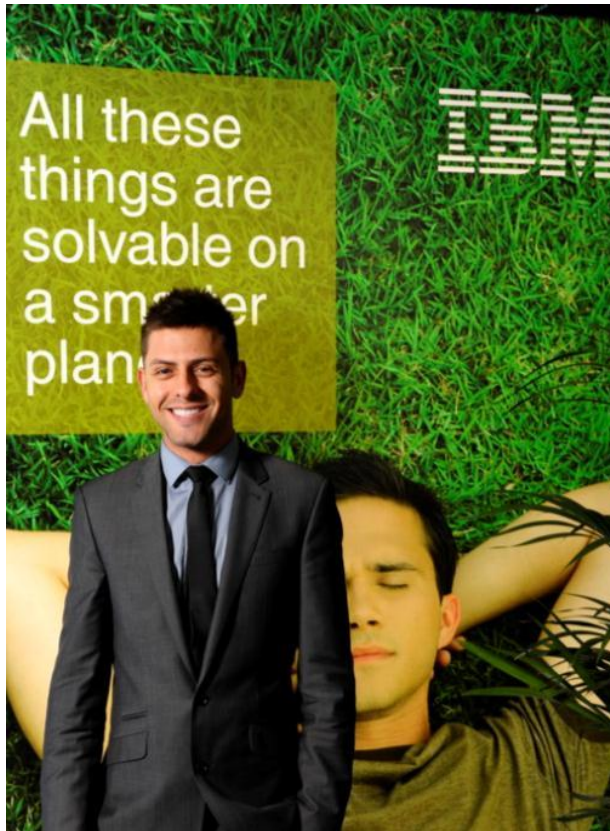
- 2,500 international students
- 130+ countries

- Four faculties across two main sites – Talbot and Lansdowne Campus - plus Partner Colleges



Innovative educators

- Learning resources
- Engaging with you
- Connected and accessible



Professionally orientated

- Industry-engaged
- Globally minded



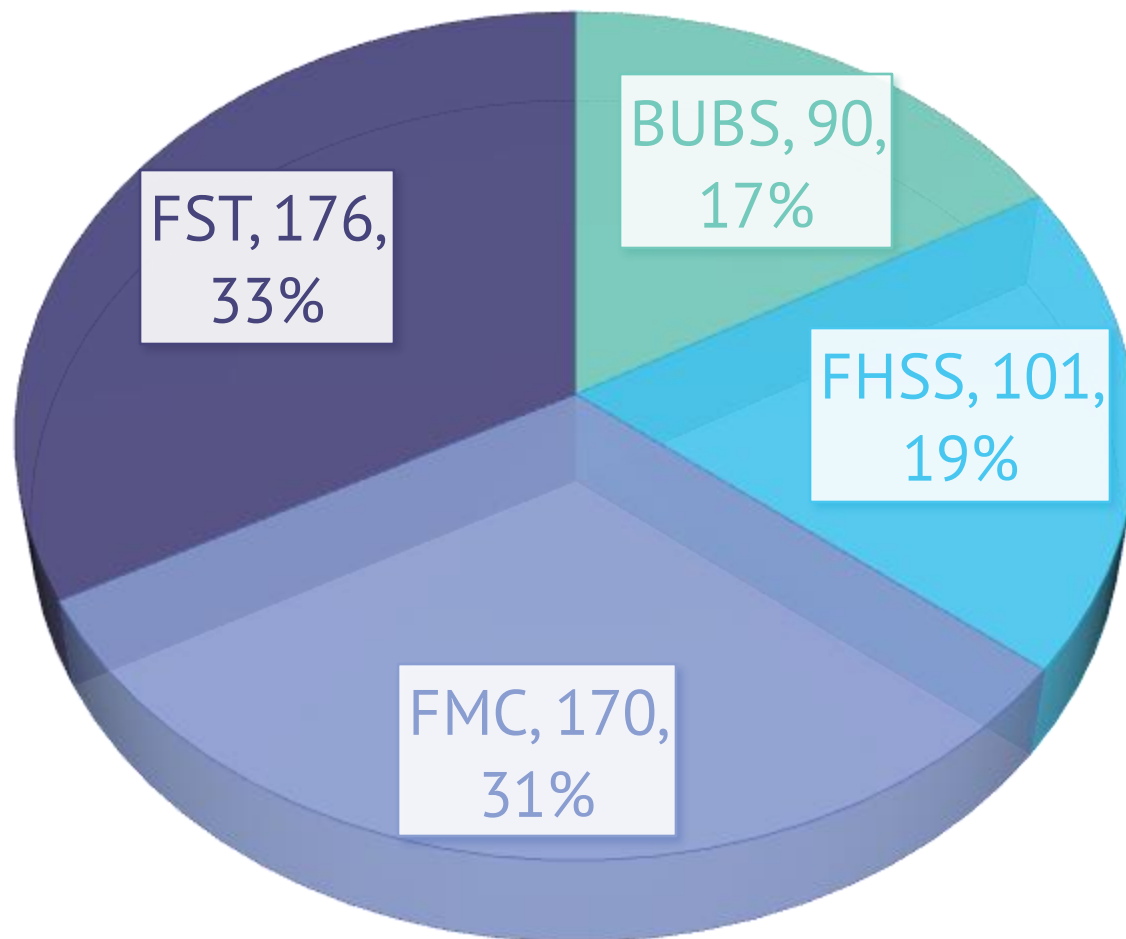
Research active & informed

- Meaningful output
- Engaged with students and community



- Our students are a **key part of the research** we conduct, co-creating knowledge with us and playing a crucial role in everything that we do.
- At BU our **research environment** supports the research capacity and capability of staff at all stages of their career.
- Our **research culture** is ambitious, inclusive and innovative, focusing in particular on the societal impact of our research and the co-creation of new knowledge with our students.

Postgraduate Researchers at BU

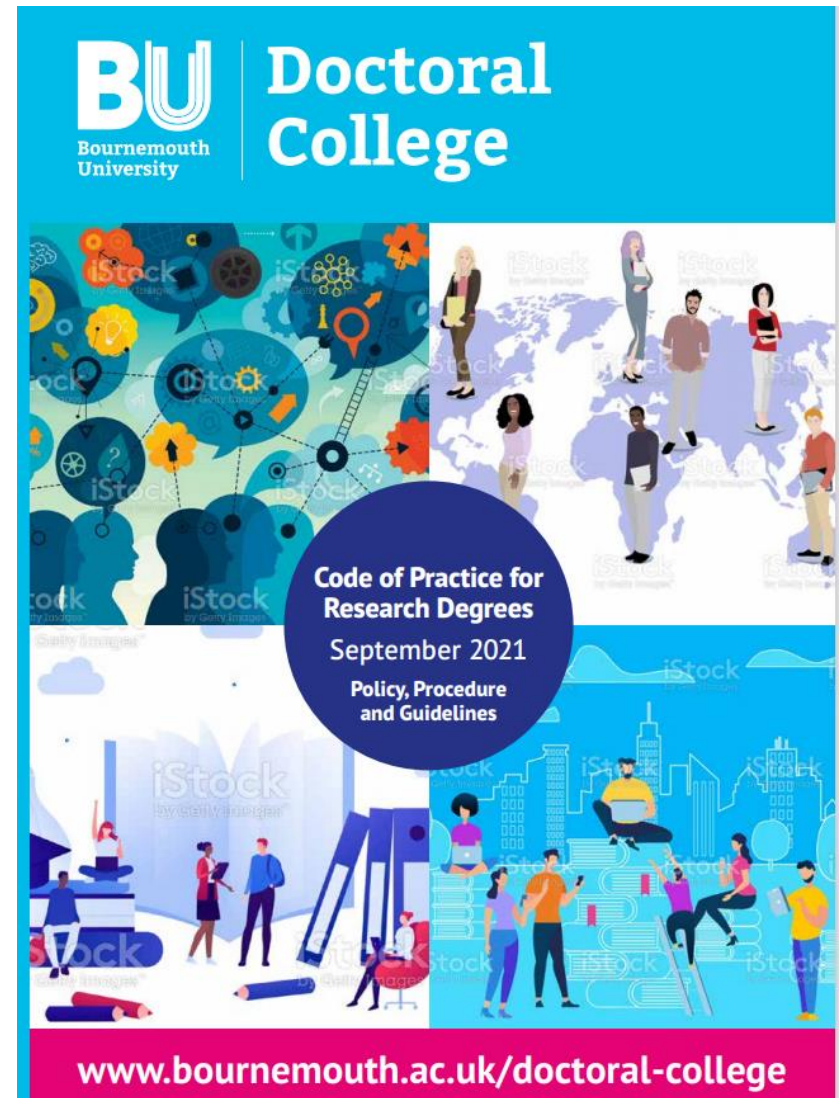
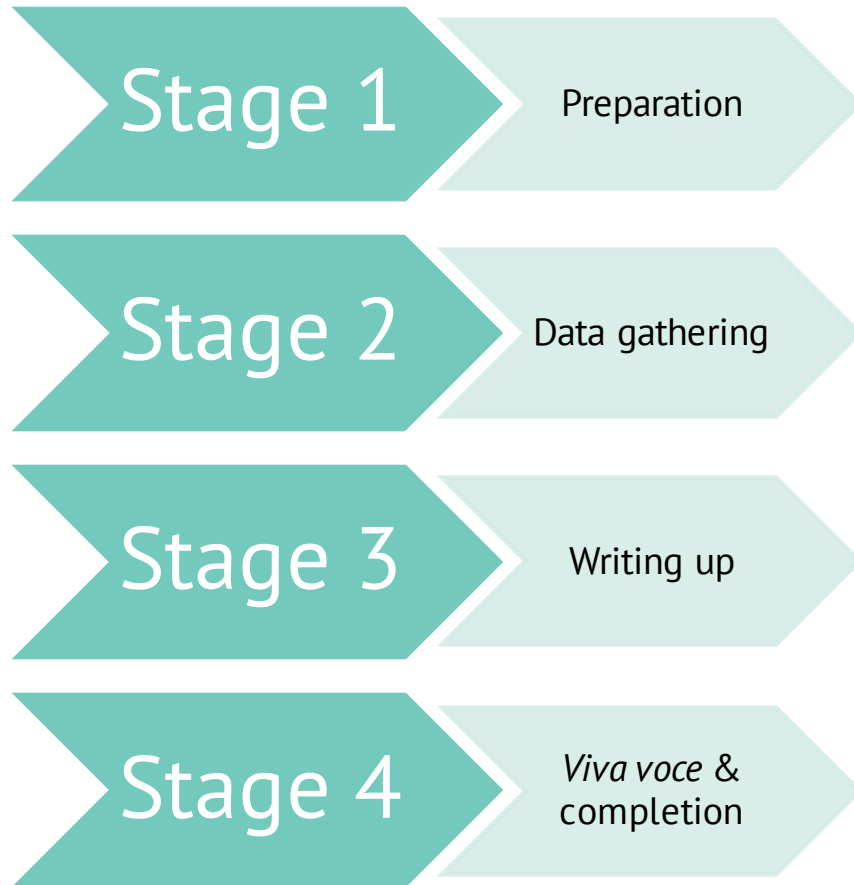


Postgraduate Research Degrees

- Research Degrees:
 - Entirely research
 - No taught elements
 - Supported by Supervisory Team
 - Wider network of support
- Degrees include:
 - Doctor of Philosophy (PhD),
 - Master of Philosophy (MPhil),
 - Master's by Research (MRes)
 - Professional Doctorates (e.g. EdD, EngD)



Key stages of a research degree



Faculty

Academic Supervision:

Regular meetings; timely feedback

Progression Monitoring:

Probationary, Major & Re-Enrolment Reviews; *Viva Voce* Examinations

Pastoral Support:

Departmental PGR Leads;
Postgraduate Research Administrators

Research Culture & Community:

Seminars, Conferences, Development;
Faculty Reps

Resources:

Office Space; IT Equipment;
Laboratory access; etc.

Doctoral College

Overarching Policy Guidance:

Codes of Practice; Academic Procedures; Administrative Processes

Research Development Programme:

Seminars; Workshops; Masterclasses;
Online Resources; Brightspace

Research Culture & Community:

Regular Newsletters; Facebook;
Annual Conference, Social Events;
Research Hu

Administrative Support:

Admissions; Enrolment; *Viva Voce* Arrangements; Conferment

BU

Academic Services:

Library, Study Skills; Graduation

Student Services:

Health & Wellbeing, Additional Learning Support; General Advice; SportBU; Faith & Reflection

IT Services:

Hardware and software support

SUBU:

Representations; General Advice; Networking; Clubs and Societies

82%
overall satisfaction

91%
“my supervisor has the skills & subject
knowledge to support their research”

81%
“my supervisor has
helped me identify
my training &
development needs”

90%
“my skills in applying research
methodologies, tools & techniques have
developed during my programme”

90%
“my skills in critically analysing & evaluating
findings & results have developed during my
programme”

90%
“my supervisor
provides helpful
feedback”

85% “I have
appropriate access to
IT resources and
facilities when on
campus”

79%
“I feel better
prepared for their
future career”

41%
response rate

Researcher Development

Research Centres

Faculty Conference

Annual PGR Conference

PGR Representatives

Faculty Research Seminars

Virtual Poster Exhibition

PGR Society

Coffee Mornings

Settling In Session

Supervisor PGRs

Faculty Blogs

Re-Orientations

PGR Peer Support Units

Research Ethics Panels

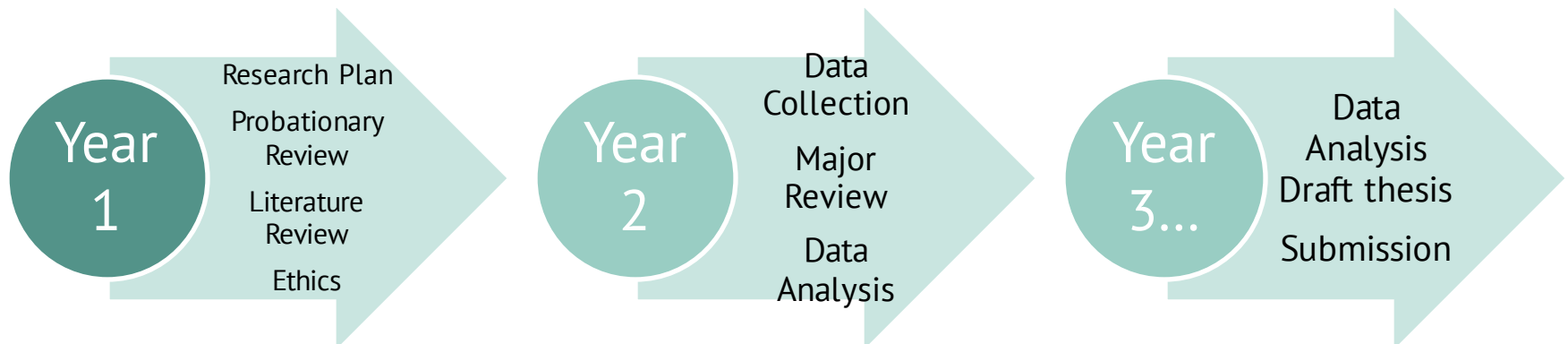
Blog Posts

Research Institutes

Faith & Reflection

Research Degree Timeline

- This is individual to you and is dependent on your:
 - Programme of study
 - Mode of attendance
 - Start date
- You will be provide with key dates by your PGRA
 - Also can be found in ResearchPAD
- Top Tip: diarise deadlines now and plan work accordingly – time flies...!



Monitoring Progression – MRes (FT)

18 months of enrolment

12 months of studentship stipend

AY 1

AY2

3

6

9

12

15

18

Probationary Review

Submission of Thesis

Re-Enrolment Review

Viva Voce Examination

Award

Monitoring Progression – PhD (FT)

48 months of enrolment

36 months of studentship stipend

AY 1

AY 2

AY 3

AY4

3

6

9

12

15

18

21

24

27

30

33

36

39

42

45

48

Probationary Review

Re-Enrolment Review

Major Review

Re-Enrolment Review

Submission of Thesis

Re-Enrolment Review

Viva Voce Examination

Award

Research Degree Rollercoaster

The “psychological” stages



- **Fees for 2023-24**

- Full-time Home/EU: £4,682
- Part-time Home/EU: £2,341
- Full-time Overseas: £17,000 (Lib)
- Full-time Overseas: £19,000 (Lab)
- Completion Status: £600



- **Funding Options**

- Self funded
- Externally funded
(e.g. employer, sponsor)
- BU Funded
(e.g. studentship)
- Postgraduate Loan
(Student Finance)

Next Steps

1.

- Identify your area of interest

2.

- Contact a potential supervisor

3.

- Develop your research proposal

4.

- Submit an online application

6.

- Prepare for your interview

Contact us

01202 961916

futurestudents@bmth.ac.uk

PGRadmissions@bmth.ac.uk