



**Bournemouth  
University**

**Level up and enhance your career prospects**

Postgraduate study with Bournemouth University

#BUOpenDay  
#BelongAtBU

- **A bit about BU**
- Why postgraduate study
- Postgraduate funding
- Accommodation
- Student experience

# Why we love Bournemouth



# Who are we

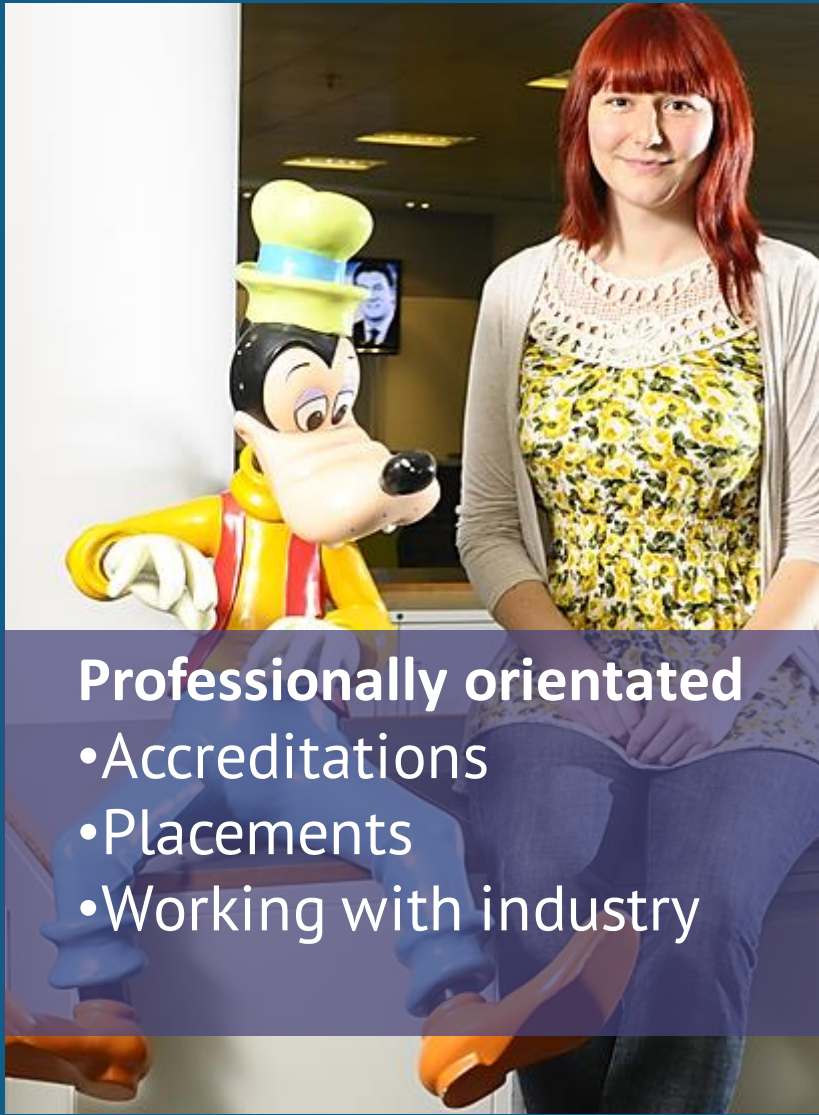
- Our vision - to be recognised worldwide as a leading university for inspiring learning, advancing knowledge and enriching society through the fusion of education, research and practice
- 18,000 students – 2,500 international students from across the world (130+ countries)
- Across two sites – Talbot Campus & Lansdowne Campus, and partner institutions



↑ 18 places in 2022 rankings



Kate Adie CBE DL, BU Chancellor



**Incredible learning opportunities**

- Live research projects
- Guest lectures



**Professionally orientated**

- Accreditations
- Placements
- Working with industry



**94%** of our research was found to be internationally recognised (Research Excellence Framework, 2021)



**Research that makes a difference**

- Helping people live better for longer
- Contributing to the creative and cultural industries

# Explore our story



# Our university

**95%** of BU graduates would recommend us to prospective students

BU Alumni survey 2020, based on 1,195 respondents

**85.9%** of UK postgraduates employed/in further study within 15 months of graduating

Graduate Outcomes Survey, 2019/20



**Award winning graduates worked on Gravity, Inception & Avatar**



**More than 1,200** students undertook an international experience between 2017 and 2019

# Campuses to be proud of



See it for yourself  
Visit our Virtual Tour to see everything in 360°  
[www.bmth.ac.uk/virtual-tour](http://www.bmth.ac.uk/virtual-tour)



Lansdowne Campus:  
Bournemouth Gateway



Talbot Campus:  
Poole Gateway





- Why postgraduate study



# Why postgraduate study?

PG Cert | PG Dip | MA | MSc | MBA

Ensuring you can **climb the ladder** with over 90 courses to choose from – a range of conversion and progression options to:

- Improve your career prospects
- Change your direction
- Acquire new skills and experience
- Explore a subject further
- Enter a particular profession/career pathway.

**85.9%**

**of our students were employed/study 15 months after graduating**

Graduate Outcomes Survey, 2019/20

Courses driven by the skills and experience employers demand...

- ✓ communication skills
- ✓ work ethic
- ✓ research methods
- ✓ team working
- ✓ self-management

- Working collaboratively with academics and industry speakers to deliver our innovative Skills Masterclasses
- Providing you with Your Skills Development Area on Brightspace for up to date tailored learning content
- Recognising your extracurricular achievements alongside your studies through structured pathways



Jenna Darlow



Alexandra Magklaropoulou

Available  
to all BU  
students!



# Applying to BU

## 1 Prepare

### Prepare your application documents:

- Your up-to-date transcript (if you are currently studying) or your final transcript (if you have completed your last qualification)
- Your most recent academic qualification (e.g. Bachelor's degree if you are currently studying an undergraduate course)
- Your Personal Statement
- One academic reference (some courses require a professional reference too) – either contact details or a letter to upload (or professional reference if you left university over two years ago)
- Check out tips on how to apply here: [www.bournemouth.ac.uk/pg-apply](http://www.bournemouth.ac.uk/pg-apply)

## 2 Apply

### Make your application to BU:

- Go to [www.bournemouth.ac.uk/courses](http://www.bournemouth.ac.uk/courses), choose the postgraduate course that you're interested in and click 'Apply now'. You will then be taken to our online application portal (myHub) to register an account, submit your application and upload the required application documents
- You can also apply for a BU scholarship at this point – visit [www.bournemouth.ac.uk/pg-scholarships](http://www.bournemouth.ac.uk/pg-scholarships)

## 3 Offer

**BU aims to make you an offer within one week of a fully completed application. If your course requires an interview or additional selection measure, it may take a little longer.**

- A conditional offer means you need to provide further evidence and your offer will contain full details of what is required
- An unconditional offer means you have met all of our academic entry requirements and you are ready to join us (subject to completing all your actions in myHub before enrolment)

Fast track application option for  
current BU students and graduates:

[www.bournemouth.ac.uk/fast-track](http://www.bournemouth.ac.uk/fast-track)

- Postgraduate funding



# The cost of Postgraduate Study

Postgraduate loan of up to

**£12,167**

Non-income assessed  
For September 2023 and  
January 2024 entry

- Loan paid in **three instalments**
- BU offers scholarships
- **Find out more:** [www.bournemouth.ac.uk/pg-funding](http://www.bournemouth.ac.uk/pg-funding)

# Paying it back

- Loan repayments will start only when you have finished your studies and earning £21,000 or over.

**6%**

Of your income above  
£21,000 (before tax)

Repay alongside 9% of any existing undergraduate 'Plan 2' loan (15%).

Interest accrues on the loan from the moment you take it out, currently this is RPI% + up to 3%

INCOME		REPAYMENT		
Annual (before tax)	Monthly	Plan 2 loan	Postgraduate Loan	Total monthly repayment
£21,000	£1,750	£0	£0	£0
£23,000	£1,916	£0	£9	£9
£25,000	£2,083	£0	£19	£19
£27,295	£2,275	£0	£30	£30
£30,295	£2,525	£23	£45	£68

**Fee flexibility**  
Pay your fees in  
two  
instalments

**20% tuition fee  
reduction for  
BU graduates**

**10% student  
family tuition  
fee discount**

**BU Financial  
Support Fund**  
Up to £1,000  
for  
emergencies  
(UK students only)



# Building a funding portfolio

- **Charities, foundations and trusts**

- Provide bursaries & scholarships to students who need help studying in their field of interest - Economic hardship, academic excellence or subject specialism
  - Charities Digest
  - The Directory of Grant-Making Trusts (Directory of Social Change)
  - The Grants Register: the Complete Guide to Postgraduate Funding Worldwide (Palgrave Macmillan Ltd)
  - The Educational Grants Directory (Directory of Social Change)

- **Employer sponsorship**

- A win-win situation - you study for a qualification that will improve your ability to do your job and your employer benefits from a better qualified, productive and motivated employee
- Arrangements can be set-up with our finance team

[www.postgraduatefunding.com](http://www.postgraduatefunding.com)

[www.postgraduate-funding.com/gateway](http://www.postgraduate-funding.com/gateway)

Pin: 6199

# Other funding

- **Disabled Students' Allowance** - If you have a disability, mental health condition, long-term health condition or specific learning difficulty
- **Grants**

## International students in the UK:

- Visit the UK Council for International Student Affairs (UKCISA) at [www.UKCISA.org.uk](http://www.UKCISA.org.uk)

- ✓ **Be proactive about additional funding routes**
- ✓ **Clarify your own justification for postgraduate study to strengthen your application**
- ✓ **Bundle support to build a portfolio of funding that suits your needs**



# Part-time work

- CareersBU Service: job shop on campus
- On-campus opportunities
  - SUBU venues and shops
  - BU Student Ambassador
- Local part-time work and seasonal roles
- Temporary contracts

## 20 hours

BU supports and recommends around 20 hours or part-time work as realistic alongside your studies.



**BU Academic  
Achievement Scholarship\***

**£2,000**

When you achieve **2:1** or above  
(and equivalents),  
September 2023 and January 2024 entry

\*All taught full-time Postgraduate Taught courses are eligible, with the exception of any distance learning courses. CPD, PGCert, PGDip and part-time programmes are excluded unless stated otherwise on our website. Applicants for the Postgraduate Diploma Legal Practice (LPC) and Graduate Diploma in Law (CPE) and eligible for the Academic Achievement Scholarship.

# Scholarships – International students

## BU Academic Excellence Scholarship\*

**£3,500**

When you achieve **2:1** or  
above  
(and equivalents),  
September 2023 and January 2024  
entry

## Chevening Scholarships\*\*

**100%** of tuition

fee and other allowances  
For September 2023

## Chevening Partner Scholarship scheme

A tuition fee waiver plus  
other allowances  
September 2023 entry

## Bournemouth University – GREAT Scholarships 2023

**£10,000**

Tuition fee waiver  
September 2023 entry

\*All taught full-time Postgraduate Taught courses are eligible, with the exception of any distance learning courses. CPD, PGCert, PGDip and part-time programmes are excluded unless stated otherwise on our website. Applicants for the Postgraduate Diploma Legal Practice (LPC) and Graduate Diploma in Law (CPE) are eligible for the Academic Excellence Scholarship.

\*\*If you would like to check if you are eligible to apply for these scholarships, please visit the Chevening website ([www.chevening.org/scholarships](http://www.chevening.org/scholarships))

Scholarships cannot be deferred. Visit the Study UK website for more information ([study-uk.britishcouncil.org](http://study-uk.britishcouncil.org))

[www.bournemouth.ac.uk/pg-scholarships](http://www.bournemouth.ac.uk/pg-scholarships)



## BU Excellence in Sport Scholarship

Up to **£5,000**

Supporting elite athletes representing  
their sport at a national or junior level



## BU Excellence in Music Scholarship

Benefits package worth up

to **£600**

per year

Supporting outstanding musicians and  
singers who raise the profile of BU's  
performance-based output

• Accommodation



# It's going to be great...

- A wide variety of accommodation options, both on and off-campus and in halls of residence.
- Specific accommodation options for couples and families and/or those with additional needs.
- Good transport links to the university campuses from all sites
- Cycle storage
- Internet connection
- Laundry facilities
- Student parking very limited

**Guaranteed  
Accommodation**  
See website for all the  
details.

**Please note:**

The accommodation prices quoted in this presentation are for the 2023/24 academic year.



# Accommodation that suits you

Shared flats from  
**£155.47 pw**  
50-week tenancy



Options shown: Chesil House from £155.47 pw, Bailey Point from £214.72 pw (includes bills, bus pass and ResLifeBU).

**Other options online**

# Accommodation that suits you

Studio flats from  
**£183.22 pw**  
50-week tenancy

# Getting moved in

**Stage 1 – when BU is your firm choice**

Register your interest in accommodation

**Stage 2 – Reserve your room**

UF – pay and sign to secure your room

CF – wait for results before securing your room

**We've got this covered. Your rent includes...**

- ✓ **12-month unlimited BU bus pass\***
  - ✓ Covers all university travel
  - ✓ Includes some local buses too
- ✓ **Internet usage\*\***
- ✓ **Bills** (gas, electric, water, sewerage)

\*Providing unlimited travel on selected services. You can opt-out of this feature, reducing rental payment by £285 (2023/24 entry figure).

\*\*Additional services/premium packages are available in some halls.

**Accommodation guarantee for September 2023 entry**



## Your skills

- **Lifestyle** – ‘Ready, steady, cook’, ‘Masterchef’, work/life balance, budgeting
- **Study** – CV workshops, placements support, Revision



## Your social life

- Organised activities & socials – Winter Ice Ball, Welcome BBQ, ‘Come dine with me’, ‘It’s a knockout’, Paddle boarding, cultural celebrations and more...



## Your wellbeing

- Welfare Coordinators for all BU accommodation
- Integration with BU wellbeing services
- Workshops for wellbeing & ‘stress-free’ socials



• Student experience

A row of five teal beach huts with white roofs and double doors, situated on a sandy beach. The huts are set against a backdrop of a grassy hill. The scene is captured in a wide-angle shot, showing the repetitive pattern of the huts and the texture of the sand in the foreground.

# Support and wellbeing

- AskBU – general support
- Additional Learning Support
- On-site childcare facilities
- Careers advice & MyCareerHub
- Faith & Reflection Service
- Subject librarians & Library experts
- On-site Police team and personal safety events
- Out of hours Welfare Duty Officer
- Student Wellbeing team
- Student Advice (Students' Union)
- ResLifeBU (support in accommodation)



## Be represented



## Be involved



**NERVE**media



**SUBU Advice**  
Free, independent, confidential advice for all BU students

academic • housing • finance • employment benefits • consumer • personal

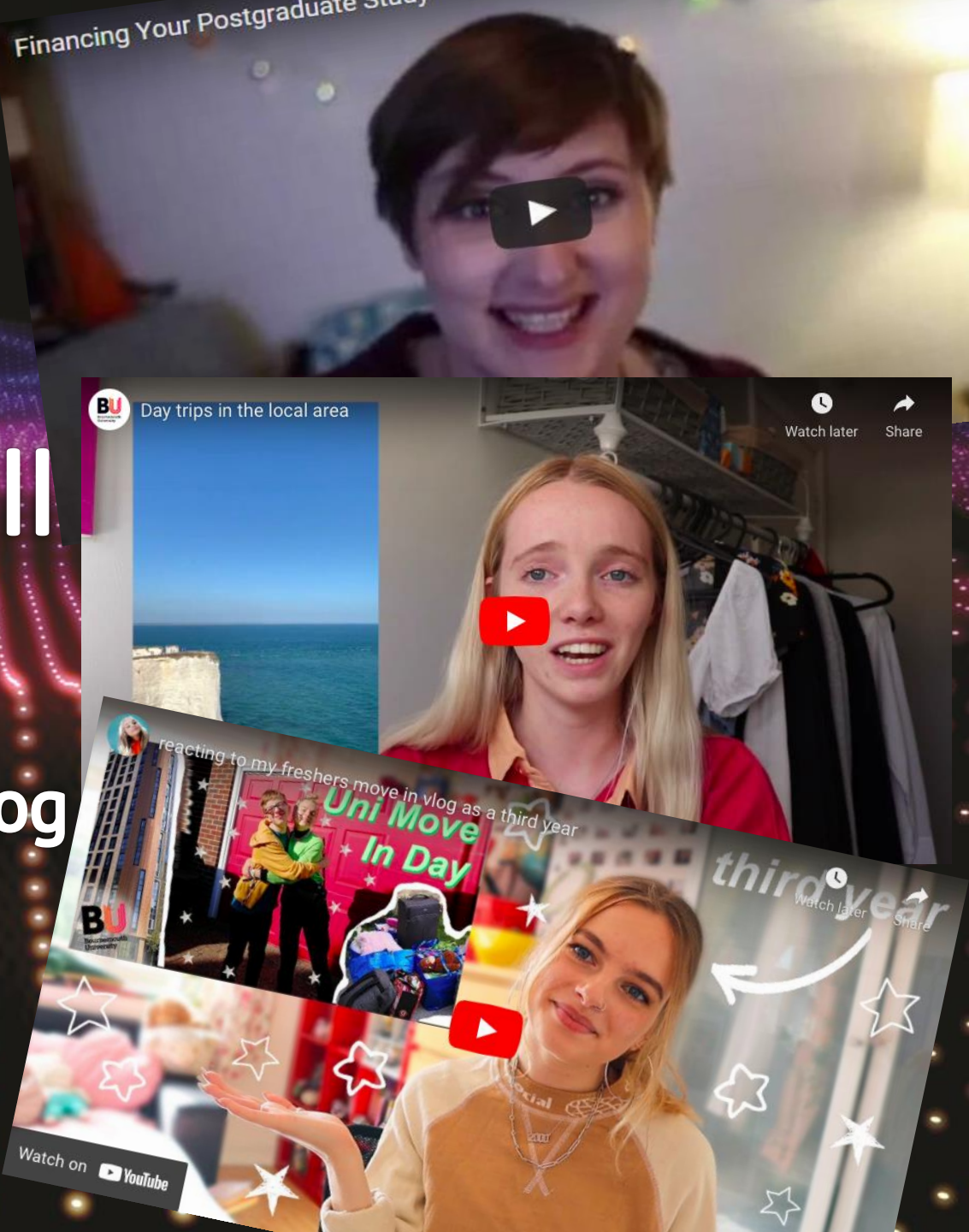
## Be supported



## Be social

# Let our students tell you their story

[www.bournemouth.ac.uk/student-blog](http://www.bournemouth.ac.uk/student-blog)





The logo for Bournemouth University, featuring the letters 'BU' in a stylized, white, outlined font. The 'B' is a simple block letter, while the 'U' has a unique shape with a vertical bar on the right side. The logo is positioned in the upper left corner of the image, which shows a long pier with a building at dusk. The pier has several arches and is lit up, with the lights reflecting on the water. The building has a large illuminated sign on its facade.

**Bournemouth  
University**

# Thank you for listening

**Contact us: 01202 961916**  
**futurestudents@bournemouth.ac.uk**

We've provided the latest information available at the time of delivery (March 2023).

For the latest information, visit our website:  
[www.bournemouth.ac.uk](http://www.bournemouth.ac.uk)