

The logo for Bournemouth University, featuring the letters 'BU' in a stylized, white, sans-serif font. The 'B' and 'U' are connected at the top and bottom, with the 'U' having a double outline.

Bournemouth
University

A young woman with long dark hair and glasses, wearing a red t-shirt and blue jeans, is walking on a sandy beach. She is smiling and looking towards the camera. In the background, there is a concrete wall with green moss, a pebble beach, and the ocean with waves. A wooden pier is visible in the distance. The text 'Let me show you why Bournemouth is my home from home' is overlaid on the right side of the image in a white, handwritten-style font. A white line with a downward-pointing arrow is positioned below the text.

Let me show you why
Bournemouth is my
home from home

Hey I'm Chandreyee,
currently studying
MA Post Production
Editing at Bournemouth
University. I'd like to
show you some of my
favourite places in
Bournemouth and places
that remind me of being
back home in Kolkata,
West Bengal, India.



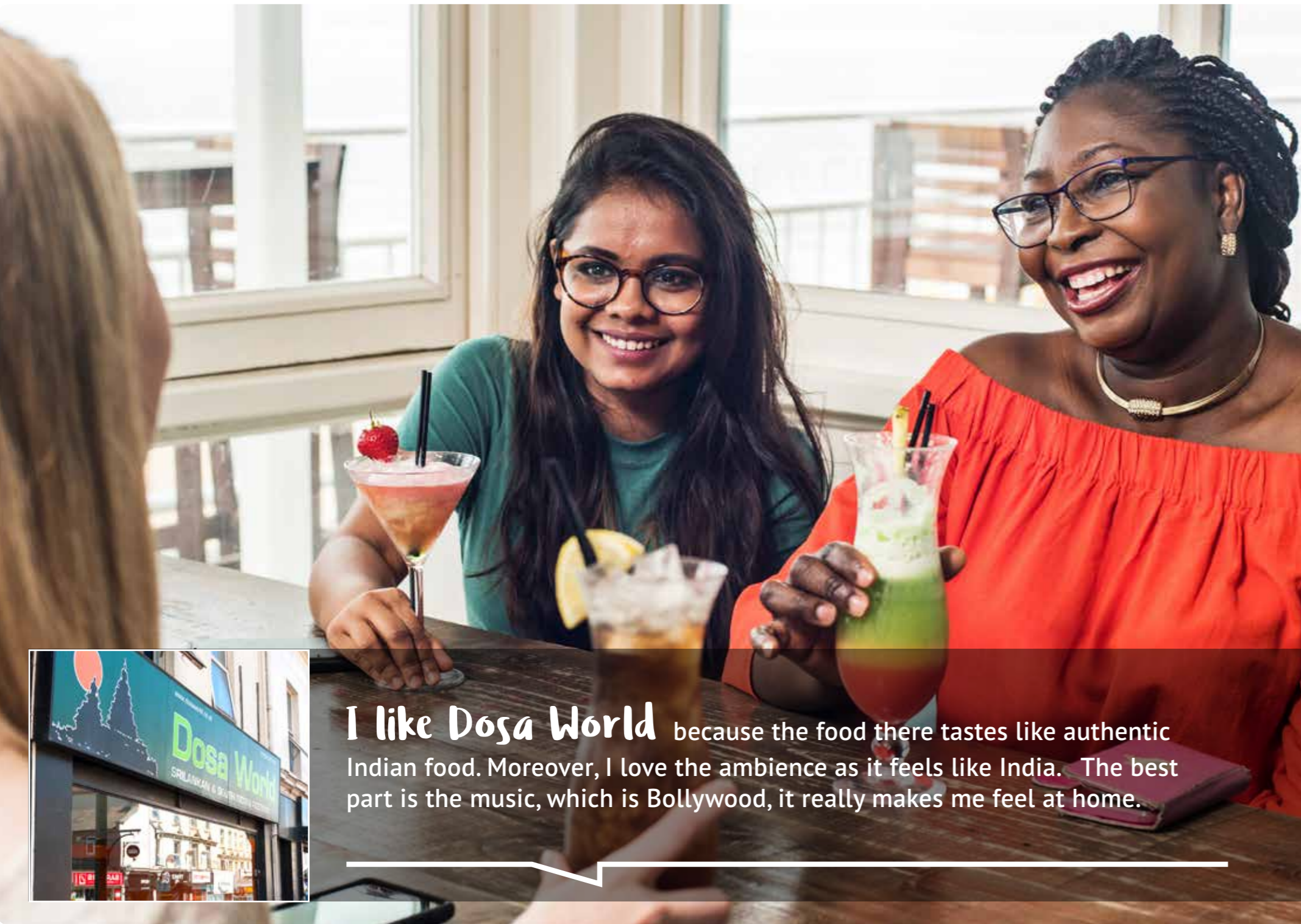
Just like the sea,
Bournemouth has more
than meets the eye.



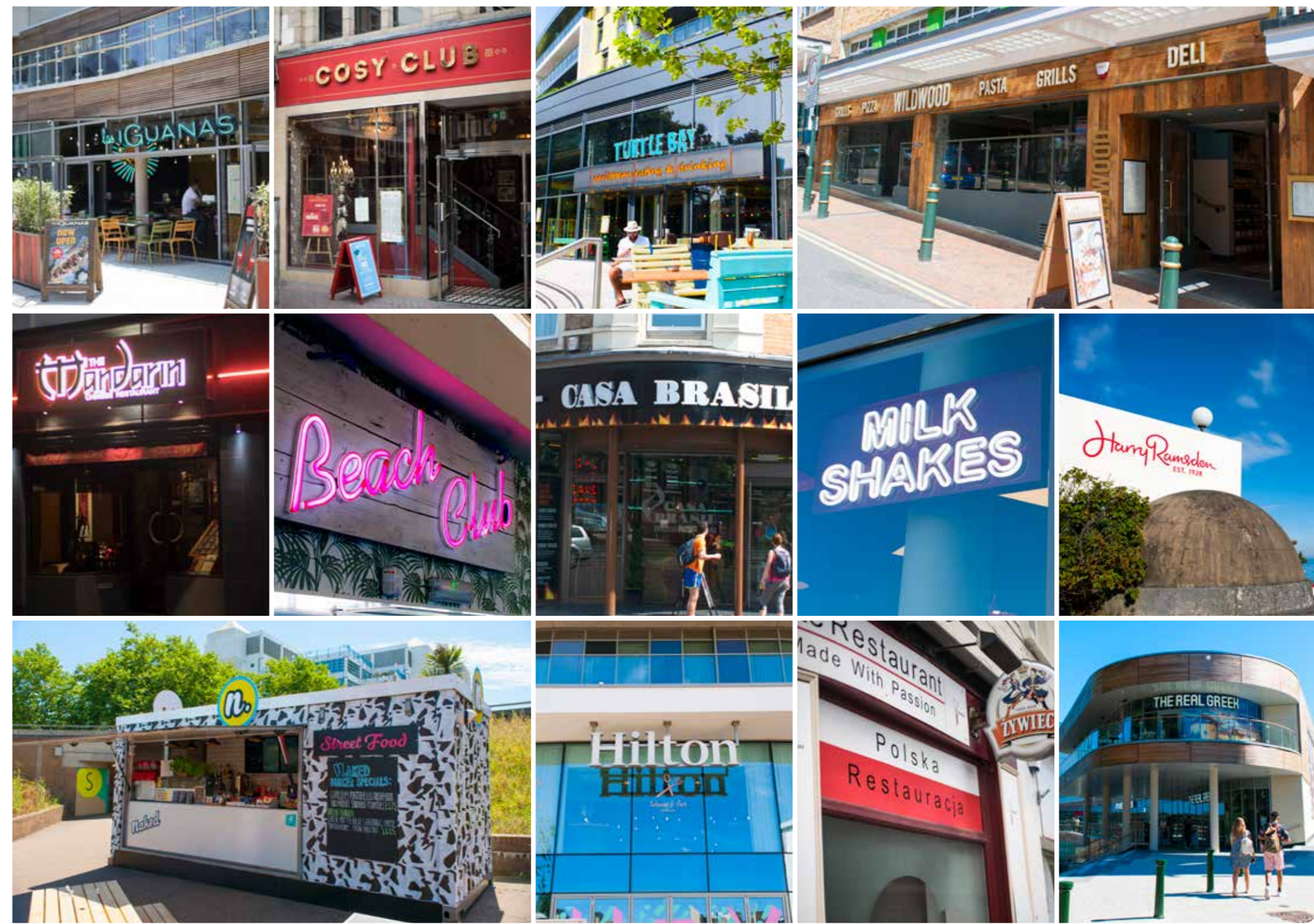
Bournemouth town centre has always been one of my favourite places. The best thing about the centre is that although it's busy, there is always beautiful and soothing music playing in some corner.







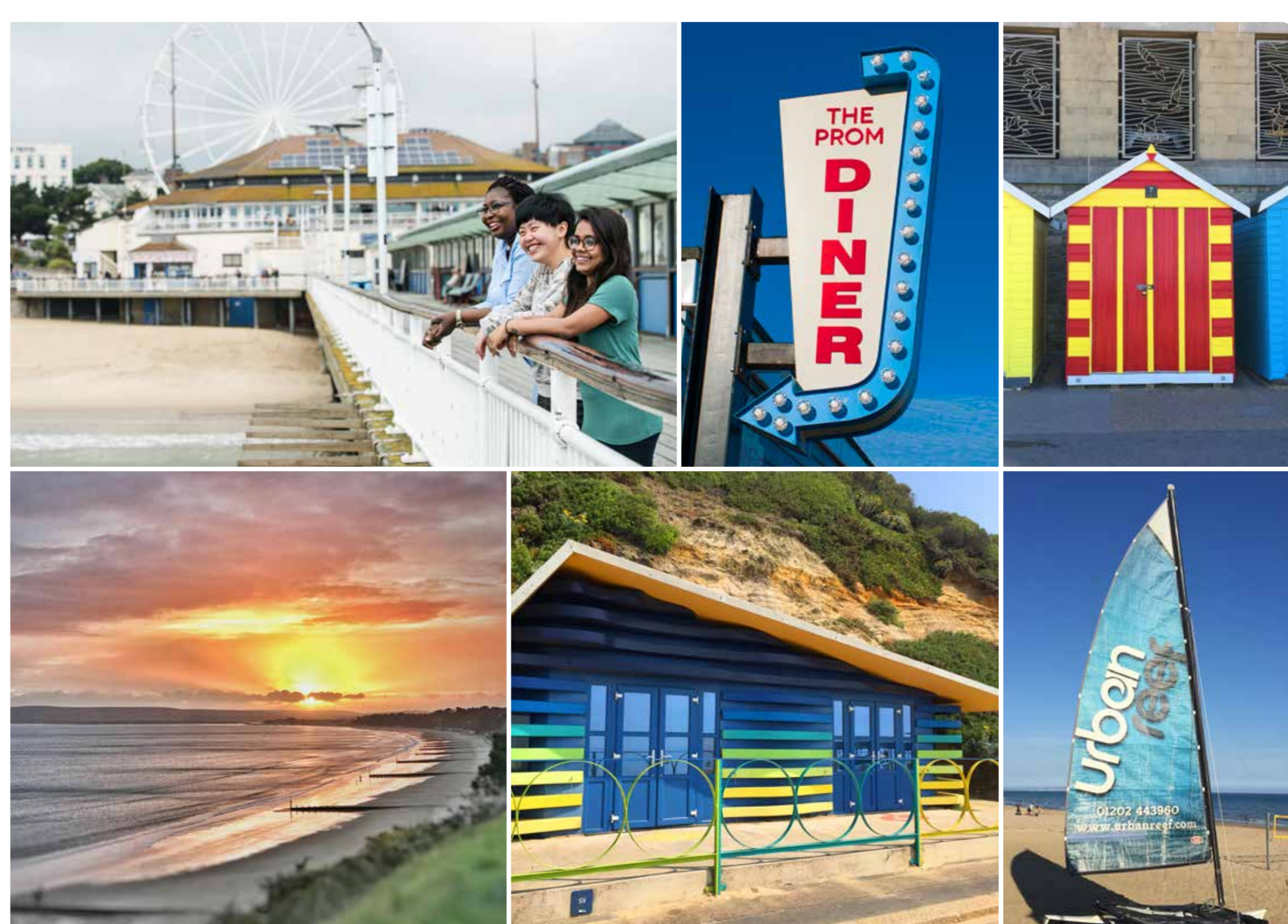
I like Dosa World because the food there tastes like authentic Indian food. Moreover, I love the ambience as it feels like India. The best part is the music, which is Bollywood, it really makes me feel at home.

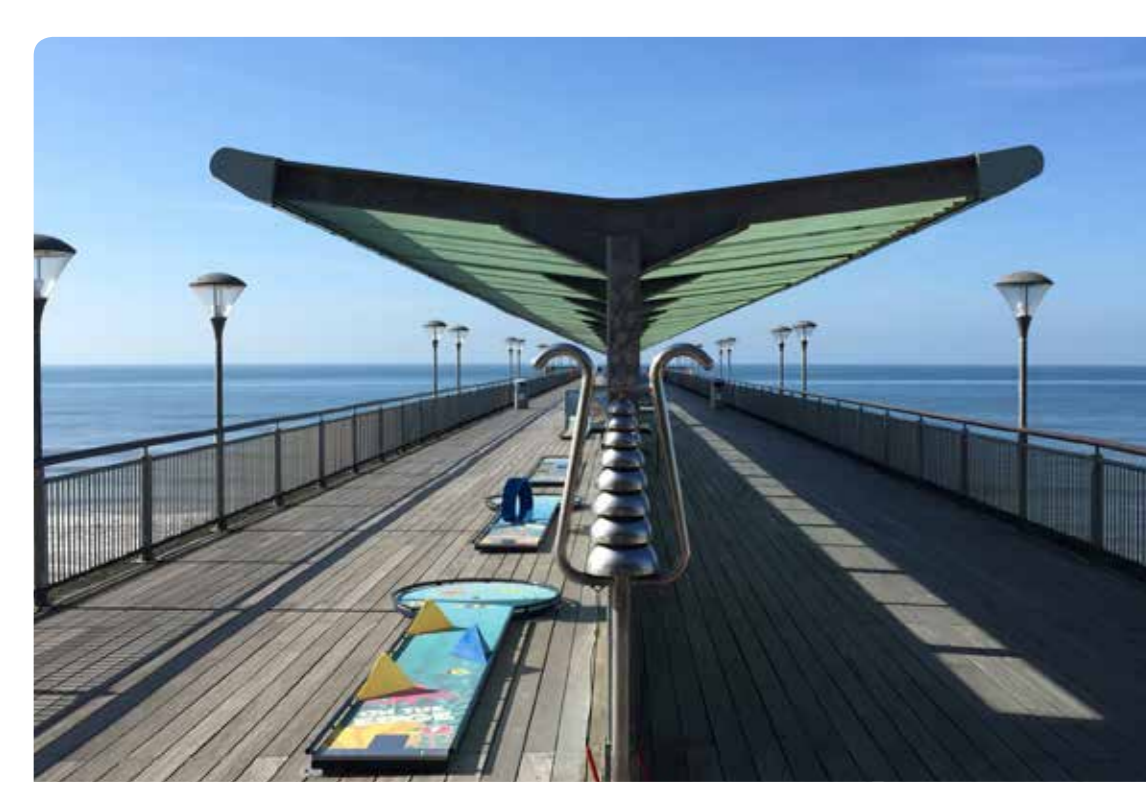


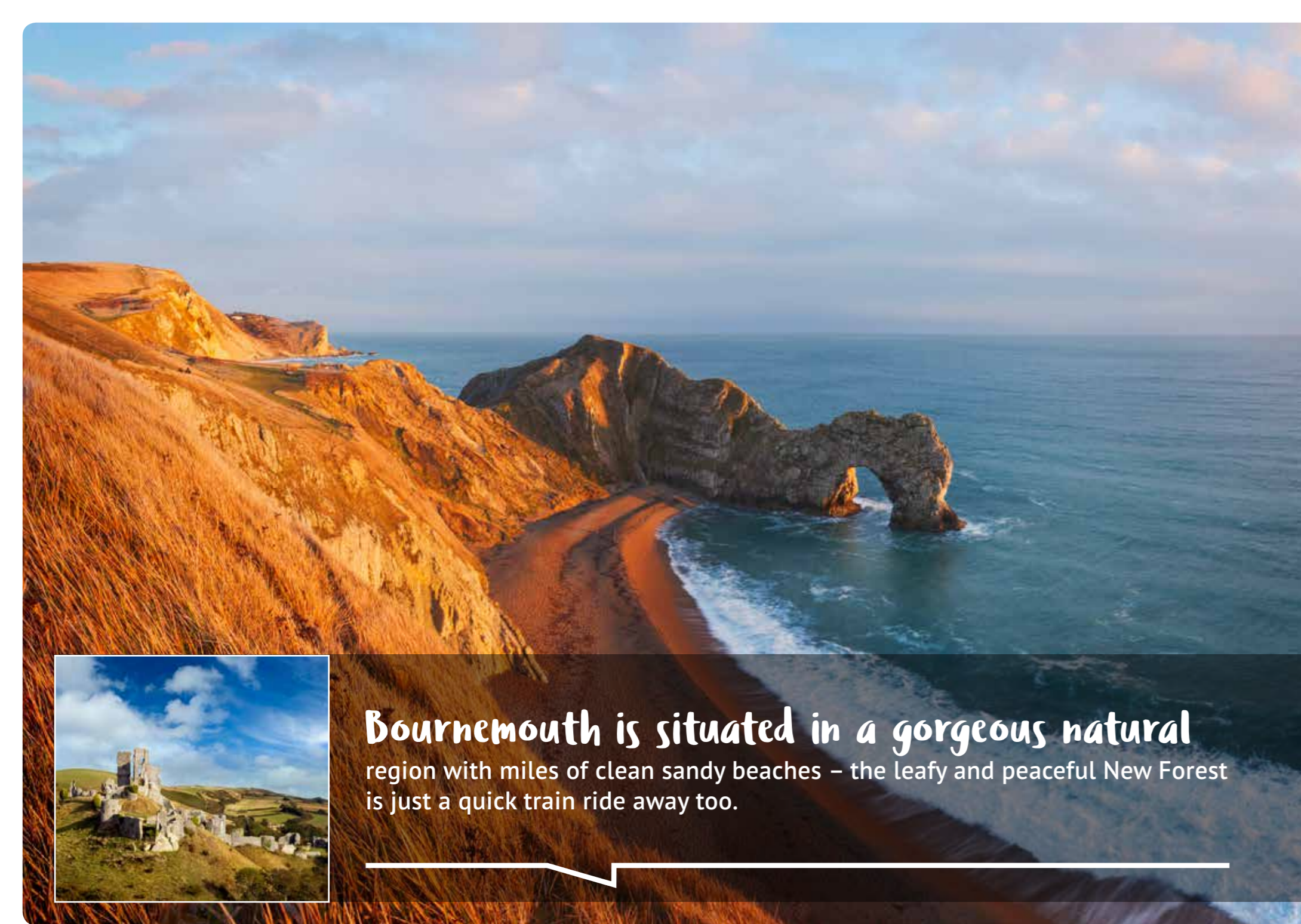




The beach has always been my constant companion in every sphere of life, from experiencing a quiet time to having a blast there. The wide expanse of the sea makes me feel infinite and, just like the sea, Bournemouth has more than meets the eye.








Bournemouth is situated in a gorgeous natural region with miles of clean sandy beaches – the leafy and peaceful New Forest is just a quick train ride away too.



Got a
question?
Contact us



 + 44 (0) 1202 961916

 International@bournemouth.ac.uk

www.bournemouth.ac.uk/international