



STUDENTS'
UNION
BOURNEMOUTH UNIVERSITY



WE ARE
SUBU

WWW.SUBU.ORG.UK

We are your Students' Union, here to help you get the very best out of your time at Bournemouth University



WE ARE SUBU

Welcome!

You're now a member of...

TRUSTED PARTNERS

We Are Freshers is organised by the Students' Union at Bournemouth University. It forms part of the Official BU arrivals event programme along with SportBU, ResLife and BU. All partners can be trusted to work together in your interests. Please think carefully about other external organisations that are not part of BU, especially if you are asked to make payments.



A member of SUBU?
What does that mean?

This is your guide to the Students' Union at Bournemouth University (SUBU) and explains all about how we work and the hundreds of opportunities there are here which will help enrich your BU student experience.

You can get involved with as much or as little as you like to fit in with your academic timetable. Our advice is to try out lots of things and get the most out of your precious time at BU.

Your Welcome Pack also includes a guide from BU with important information to help you get ready for life at BU, as well our 'We Are Freshers' guide to all the parties and entertainment happening at the start of term.



READ ALL THE GUIDES AND GET THE MOST OUT OF YOUR SUBU

Guide Contents

WELCOME & GUIDE CONTENTS	01-04
WELCOME FROM YOUR OFFICER TEAM	05
WHAT TO DO NOW - 3 EASY STEPS	06
WHERE IS SUBU?	07-10
ACTIVITIES: CLUBS, SOCIETIES AND NETWORKS	11-14
ACADEMIC SOCIETIES	15
OVERSEAS CHALLENGES & FUNDRAISING	16
SUBU DEBATES	17
NERVE MEDIA	18
STUDENT REPS #PURPLEARMY	19-20
SUBU ADVICE: SUPPORTING YOU	21-22
COMMUNITY ACTION TEAM	23
SUSTAINABILTY ACTION TEAM	24
VOLUNTEERING ACTION TEAM	25-26
DEMOCRACY AND CAMPAIGNS	27-28
LIBERATION CAMPAIGNS	29-32
WE'RE HERE FOR YOU AT LANSDOWNE	33-34
WE ARE TOTUM	



Printed on cocoon Pure Natural Silk. A recycled paper containing 100% post consumer waste and manufactured at a mill that is certified with ISO 14001 environmental management standard. Pulp used to produce this product is not bleached.

WE ARE SUBU



WELCOME FROM YOUR OFFICER TEAM

A warm welcome to you all,

Starting university is an exciting time, and something we can still remember!

As a BU student you are now a member of the Students' Union at Bournemouth University and we can't wait to meet you and share all we have to offer. In the meantime, take your time to read through this guide and your Welcome Pack for ideas on all the great activities, societies and events you can participate in to make your time here fun and rewarding.

Our priority as elected officers of your Students' Union (SUBU) is to ensure fairness for all, and that your voice is heard - both within the Union and the University. There is more detail in this guide about the various ways we help make that happen, from

becoming an Elected Officer, collecting feedback as a Student Rep, joining our Liberation Campaigns, attending termly Big Student Meetings and more.

We hope you have an amazing time here at Bournemouth University, and please do visit us in the Student Centre at Talbot Campus or at our office in Studland House on the Lansdowne Campus.

We look forward to meeting you very soon.

Best wishes,

Adeyinka, Lea, Abidemi, Lenrick and Joanna

Your SUBU Full-Time Officer team 2019 - 20

HELLO EVERYBODY, WELCOME TO SUBU



WHAT TO DO NOW 3 SIMPLE STEPS

REGISTER WITH US #1

Our landing page is wearefreshers.com

Why do I need to register? *

We really don't want you to miss out on the essential Freshers' Week (+ beyond) announcements and events. Be the first to hear about events and opportunities!

READ OUR GUIDES #2

We Are Freshers & We Are SUBU Guides (also available online)

How will I find time to do everything?

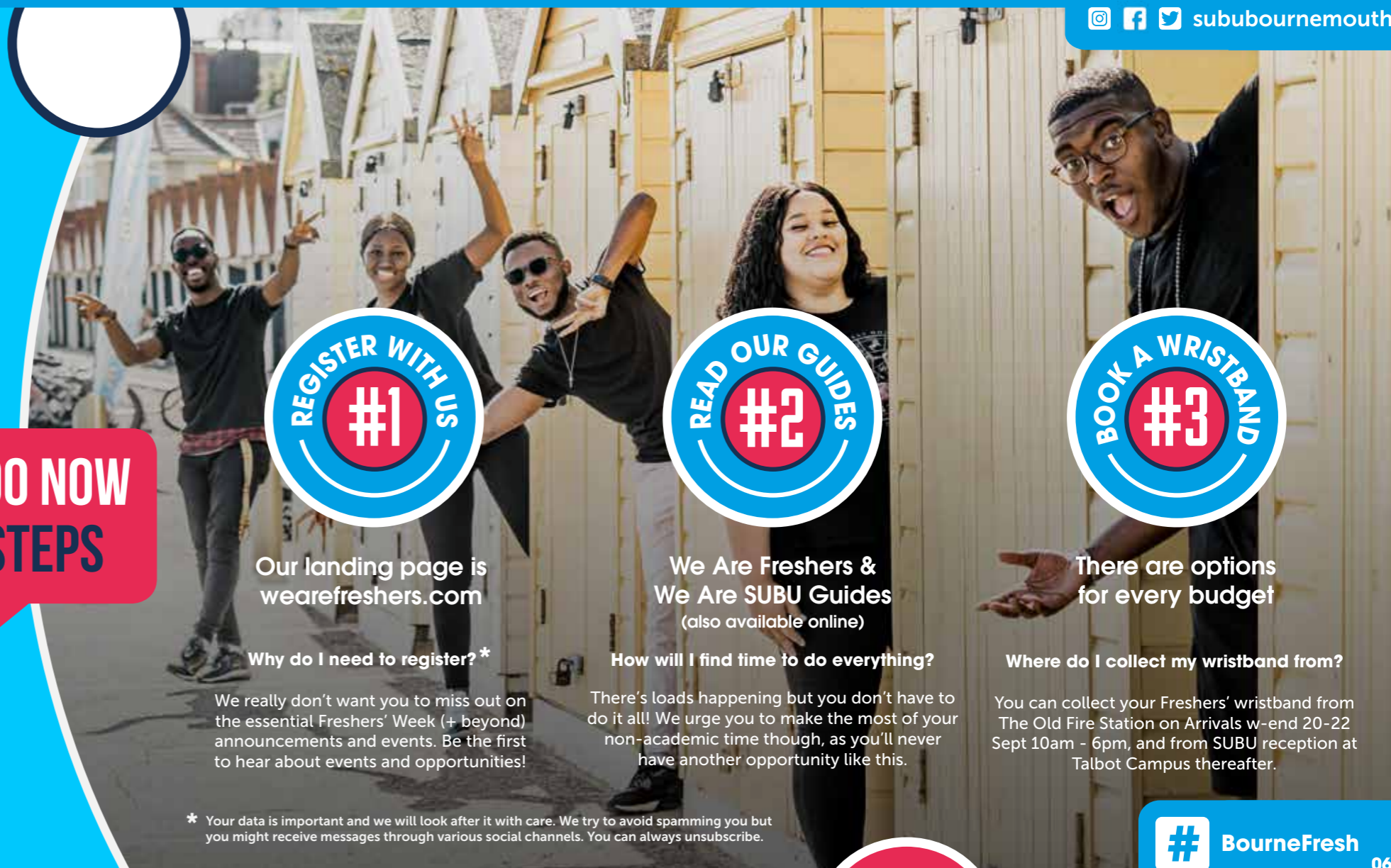
There's loads happening but you don't have to do it all! We urge you to make the most of your non-academic time though, as you'll never have another opportunity like this.

BOOK A WRISTBAND #3

There are options for every budget

Where do I collect my wristband from?

You can collect your Freshers' wristband from The Old Fire Station on Arrivals w-end 20-22 Sept 10am - 6pm, and from SUBU reception at Talbot Campus thereafter.



* Your data is important and we will look after it with care. We try to avoid spamming you but you might receive messages through various social channels. You can always unsubscribe.

WHERE IS SUBU?

www.wearefreshers.com
www.subu.org.uk

TALBOT CAMPUS

THE STUDENT CENTRE

- G** - Ground Up Café
SportBU
Study space
- 1** - Reception
Full-Time Officers
Representation
Study space
- 2** - Activities
Community Action Team
Sustainability Action Team
Volunteering
Advice
Study space
- 3** - Study space
Lady Cobham Bridge
- 4** - Democracy and Equality
Nerve Media Hub
Study space
- 5** - Study space

Journey Indicator



The Student Centre
Talbot Campus

STUDENT SHOP

Your student shop stocks great value sandwich meal-deals, drinks and essentials for your day to day life. What's more you can buy event tickets with no costly booking fees, Bournemouth University merch and Krispy Kremes!



DYLAN'S KITCHEN & BAR

Offering delicious food and drink throughout the week at the best student prices. Try the best-selling Dylan's Burger, it will keep you full for hours.



LANSDOWNE CAMPUS

THE OLD FIRE STATION

It's the prettiest venue in town, just a few minutes from Lansdowne halls and is easily the best Students' Union nightclub in the south, bringing you epic club nights and live entertainment throughout the week. It also features The Engine Rooms which can be a great little room to have your own party in.



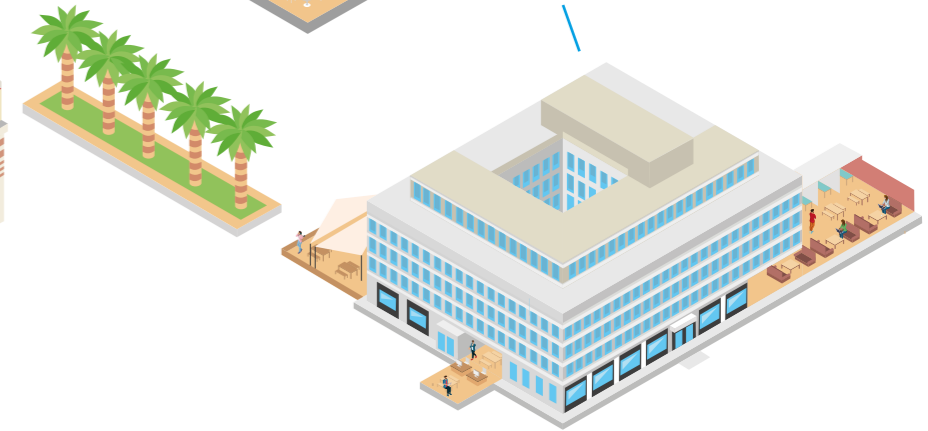
STUDLAND HOUSE

At the heart of Lansdowne Campus, with social spaces and a café to help you relax. You can find the SUBU Office with helpful staff on the ground floor.



BOURNEMOUTH HOUSE

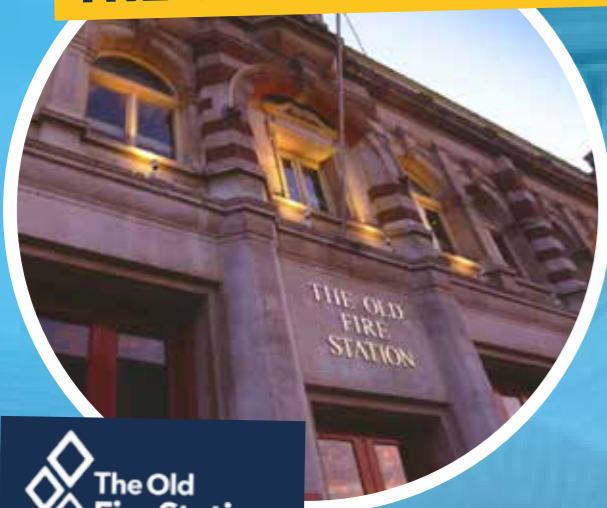
Chill out in the BoHo Lounge or garden while you work. SUBU Advice is in room BG07 and on the first floor (B130) there is a cosy student lounge.



EXPLORE OUR FANTASTIC RANGE OF PLACES.....TO MEET AND SOCIALISE

LANSDOWNE

THE OLD FIRE STATION



The Old Fire Station

It's your unbeatable Students' Union nightclub providing you with the biggest and best student nights throughout the week. The Old Fire Station will surely become your final destination on many a night out and you'll always be welcome here. It's located in the heart of the Lansdowne and is entirely staffed by your fellow students. The Old Fire Station delivers a range of nights catering for all, with affordable drinks prices and three rooms of music.

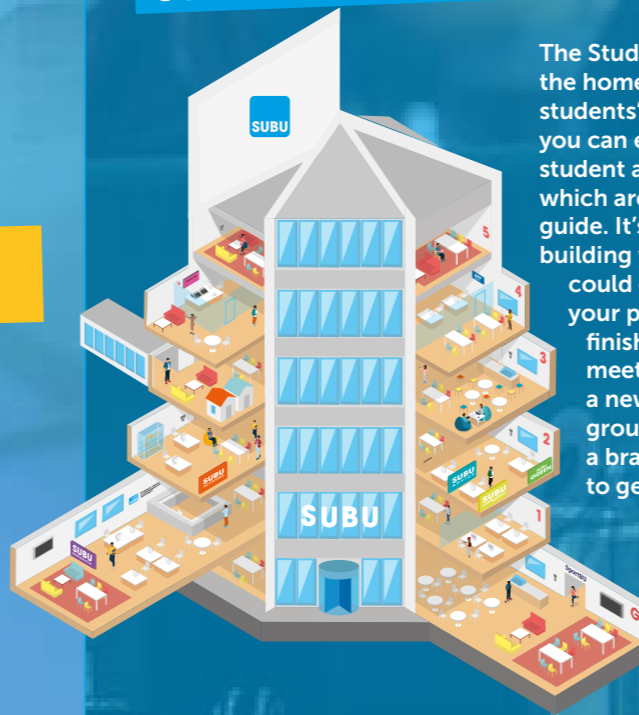
SUBU at Lansdowne is based in the ground floor of Studland House on Christchurch Road just around the corner from The Old Fire Station. Here you can meet your friends, grab a drink and find out about the latest campaigns and opportunities happening in your students' union. It's a very popular hang-out for HSS Faculty students.

THE COMMON ROOM (STUDLAND HOUSE)



TALBOT CAMPUS

SUBU HQ: THE STUDENT CENTRE



The Student Centre is the home of SUBU - your students' union. It's where you can engage in all kinds of student activities and groups which are described in this guide. It's also a buzzing building where you could choose to find your perfect place to finish that assignment, meet up and make a new friendship group or even find a brand new opportunity to get involved with.

DYLAN'S KITCHEN & BAR



Situated on Talbot Campus, Dylan's serves food every day ranging from mega fry-ups in the morning to chicken wings, pizzas, burgers or curries through until the evening. You can come and grab a Starbucks coffee between lectures, or unwind with a drink after a busy week in a chilled-out, friendly atmosphere.

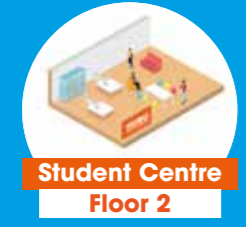
GROUND UP COFFEE SHOP



Ground Up is on the ground loor of the Student Centre and has lots of bench seating which is great for meeting in groups. It serves up fresh handmade pastries, delicious burritos, ciabattas and the best value barista-crafted coffee on campus.

ACTIVITIES

Clubs | Socs | Networks

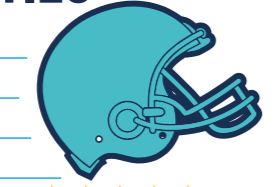


Student Centre
Floor 2

With over 120 spectacular Clubs, Societies and Networks on offer we have something for everyone at SUBU Activities. Go above and beyond your degree, meet new people, develop new passions and experience something new. Get involved now and make your BU experience truly unforgettable.



OUR BIG LIST OF 120+ CLUBS & SOCIETIES



- Advertising Society
- African & Caribbean Society
- Airsoft Society
- Alternative Music Society
- American Football Club (Bobcats) ★★★★★
- Amnesty International BU
- Animation Society
- Anime Society
- Arab Society
- Archaeological and Anthropological Society ★★★★★
- Archery Society ★★★★★
- Art Society
- ASMR Network
- Athletics Club
- Baking Society
- Ballroom & Latin Dance Society ★★★★★
- Beach Bay Runners
- Boat Club ★★★★★
- Bournemouth Young Labour
- Boxing Society (Silverbacks)
- Brazilian Jiu-Jitsu Society

- Breath of Life Ministries Society
- British Sign Language Society
- BU Women in STEM
- Bulgarian Society
- Business Society
- Campus Collective
- Cheerleading Society (Falcons)
- Chinese Society
- Christian Union
- Clay Pigeon Shooting
- Climbing Club ★★★★★
- Cocktail & Mocktail Society
- Coffee Society
- Community Film Network
- Composers Network
- Computing Society
- Conservative Society
- Cyber Security Society ★★★★★
- Cycling Club
- Dance Society ★★★★★
- Design Society
- Different Abilities Alliance
- Disney Society
- DJ MC & Producer Society
- Equestrian Society
- European Society



- E-Sports Society
- Events Society
- Exploration Society
- Filipino Society
- Film Society
- Finance Society
- First Aid Society ★★★★★
- Forbes List Society
- Forensic Society
- Free Fall Club (BUFF)
- Gamers Society
- Games Development Society
- Geography Society
- Ghanaian Society
- Global Markets Society
- Go Karting Society
- Gospel Choir Society
- Handball Club
- Harry Potter Society
- Hip Hop Dance Society
- History Society
- Hong Kong Society
- Hospitality & Tourism Society ★★★★★
- Improvisation Society
- Indian Society
- Indonesian Society



- Islamic Society ★★★★★
- Italian Society
- Japanese Society (Nihongo)
- KPOP Society
- Law Society
- LGBTQ+ Gamers Society
- Live Action Roleplay Society ★★★★★
- Magic The Gathering Society
- Marketing Society
- Media Production Society
- Midwifery Society
- Muscle & Athletic Sports Society (MASS)
- Nepalese Society
- Nigerian Society
- Nomads Society
- Nursing Society
- Nutrition Society
- Occupational Therapy Society
- Pagen & Witchcraft Network
- Performing Arts Society ★★★★★
- Photography Society
- Physiotherapy Society
- Podcast Society
- Poker Society
- Politics Society
- Polo Club ★★★★★



- PR Society
- Psychology Society
- Quidditch Society
- Redeemed Christian Fellowship
- Reducetarian Society
- Robotics Network
- Roller Derby Society
- Rounders Society
- Sailing Club
- Scuba Diving Society
- Sip & Sketch Society
- Snowriders
- Social Science Society
- South African Society
- Southern Asia Society
- Spanish Society
- Students Action for Refugees
- Students Kick Cancer
- Surf Club ★★★★★
- Swimming Club ★★★★★
- Tennis Society
- Trampolining Club
- Turkish Society
- UBT Bournemouth
- Ultimate Frisbee ★★★★★
- Vietnamese Society

WHAT ARE 5 STAR CLUBS & SOCIETIES?

These are high performance Clubs or Societies who have taken part in our special development scheme. Any Club or Society can take on the 5* challenge which helps make a group even better for its members.



- Wakeboard Club
- Wildlife Conservation Society ★★★★★
- Windriders
- Yoga Club
- Young Liberals Network

SOCIETIES IN NEED OF YOUR LOVE

These recently disbanded groups aren't currently registered; could you bring them back to life?

- Accounting Society
- Health & Fitness Society
- Journalism Society
- Pre-Hospital & Emergency Care Society

If you're interested then contact the Activities team:
 ✉ suclubs@bournemouth.ac.uk

CLUB NOT ON THE LIST? IT'S EASY TO START YOUR OWN!

If the club you're looking for isn't on this list, we have made it as easy as possible for you to create your own. Come see the activities team on the second floor of the Student Centre who will help you get your dream in motion.

📍 www.subu.org.uk/startaclub

📷 📺 📧 sububournemouth

GET INVOLVED

Come and find us on the Second Floor of the Student Centre. You can find us on Facebook @SUBU Clubs and Societies, alternatively just email us:
 ✉ suclubs@bournemouth.ac.uk

AMERICAN FOOTBALL CLUB (BOBCATS)

Awarded to the club who have shown they have got the lot! From achieving great results, to staging legendary socials and innovative fundraisers, and of course, reaching 5* status – an exclusive title reserved for only the best clubs!

KEY EVENTS

FRESHERS' FAIR

SAT | 28/09 /19 | 11AM-3PM

*10-11 accessibility hour. After a hectic Freshers' Week One you are invited to join over 8000 new and returning students who will descend on Talbot Campus for a fun, freebie-filled Saturday in the sun!

Do make sure you find and join your academic society along with exploring the many other clubs, groups and local brands who will all be showing themselves off.

WHERE CAN I SIGN UP?

The Freshers' Fair is one of the biggest and best in the UK, where over 120 clubs, societies and networks will be on campus to welcome you and answers any questions you may have. You can join any of our clubs, societies and networks online at:
 📱 www.subu.org.uk/activities

CLIMBING CLUB

Awarded to a group who have shown examples of their dedication to Inclusivity, Diversity, Equality & Accessibility. The climbing club have hit the stratosphere in the last couple of years, winning Club of the year in 2017/18.

WHERE TO FIND US?

THE STUDENT CENTRE - SECOND FLOOR

📍 [/subuclubsandsocs](https://www.facebook.com/subuclubsandsocs)
 ✉ suclubs@bournemouth.ac.uk

BourneFresh

ACADEMIC SOCIETIES



Student Centre
Floor 2



Academic Societies are our foundation and we recommend that you join at least one. The societies listed will enhance your academic experience, gaining you networks, knowledge and skills; way more than you can get from your course alone.

Academic Societies provide you with opportunities to develop skills within your faculty and beyond. The relationships that these societies have with their departments represent some great examples of collaboration within BU.

DID YOU KNOW?

From as little as £1 a year you could be a member of your academic society.



SUBU ACADEMIC SOCIETIES OUR CURRENT LIST

Faculty of Health & Social Sciences

- Midwifery Society
- Nursing Society
- Nutrition Society
- Occupational Therapy Society
- Physiotherapy Society
- Politics Society
- Social Science Society

Faculty of Media & Communication

- Advertising Society
- Animation Society
- Film Society
- Games Development Society
- Law Society
- Media Production Society
- NERVE Mag, News, Now, Radio, TV
- Photography Society
- PR Society

Faculty of Management

- Business Society
- Events Society
- Finance Society
- Hospitality & Tourism Society
- Marketing Society

Faculty of Science and Technology

- Archaeological & Anthropological Society
- Computing Society
- Cyber Security Society
- Design Society
- Forensic Society
- Geography Society
- History Society
- Psychology Society

WE'RE LOOKING FOR ACADEMIC SOC PATRONS

Do you know somebody in the community or a member of your faculty that you think could be an amazing Patron for an Academic Society? Please get in touch and let us know today.

Email:

✉ suclubs@bournemouth.ac.uk

OVERSEAS CHALLENGES & FUNDRAISING

SUBU offers you the opportunity to take on life changing adventures and travels, create relationships that last a lifetime, and of course, fundraise for incredible causes.

This year SUBU are offering Overseas Challenge trips to Thailand, Uganda and Tanzania. Come and find us at Freshers' Fair on Sat 28th Sept to find out more!

WANT TO FUNDRAISE?

If you want to get involved in running a fundraising event or just set up a charity campaign then we would just love to help you out.

If you have any questions or want to find out more about Overseas Challenges or fundraisers then just pop up to the second floor of the Student Centre and ask any member of the Activities Team.



SUBU DEBATES



Student Centre
Floor 4



SUBU DEBATES

You can become a debate champion and run informal debates for your fellow students. Here's just a few of the debates which we ran last year:

- Is it too late to save the planet?
- What counts as consent?
- Is benefiting from white privilege racist?
- When is fancy dress offensive?



✉ subudebates@bournemouth.ac.uk

Facebook /SUBUDebates

Twitter @SUBUDebates

Scan and watch our video!
Visit our website:
www.subu.org.uk/debates



NERVE MEDIA



Student Centre
Floor 4



Here at SUBU, you have the chance to join a full-scale FM radio station, magazine, news agency, website and TV production company. Nerve have also interviewed hundreds of bands and cover the AFC Bournemouth season!

TV | WEBSITE | RADIO | NEWS | MAG

Are you a budding journalist, radio presenter, TV producer, blogger or editor? Then SUBU's Nerve Media is waiting for you to shine.

WHERE TO START?

To get going with Nerve you can sign up on the SUBU website. Then come and meet the team at Freshers' Fair on Saturday 28th September.

Keep your eyes peeled on Facebook and you could check out the Nerve website:

📱 www.nervemedia.org.uk



WHERE CAN I FIND THE NERVE MEDIA STUDIOS?

Any student can gain experience with Nerve and the Studios are on the 4th floor of the Student Centre, Talbot Campus.

Scan & watch Nerve's interviews with students at SUBU Summer Ball 2018



STUDENT REPS

#PurpleArmy



Student Centre
Floor 1

When you get to University, it's essential to provide feedback about your experience so that BU and SUBU can make it the best it can be. From your lectures to facilities on campus, it all matters to Student Reps!

REPRESENT YOUR COURSE MAKE CHANGE

WHY DO WE NEED STUDENT REPS?

A student representation system is essential at every university. To get the most out of your time, there's an expectation for you to feed back about your experiences. Student Reps are a vital link in getting that feedback heard.

WHAT IS A STUDENT REP?

A Student Rep is a student who has been elected by their class to represent student views and opinions to BU and SUBU. Student Reps are elected by their course to collect feedback, represent it to the University, and work with staff to create change. You don't need any previous experience because you'll get full training by the SUBU Rep Team.



HOW TO GET INVOLVED

You must be elected by your class to become a Rep - but worry not, it's not as scary as it sounds.

During the start of term a Faculty staff member will ask who would like to be the Rep for your class, simply put yourself forward, and the class will vote. It really is that easy!



Being a Student Rep has greatly contributed towards my most enjoyable year at BU

Final Year Student Rep,
Faculty of Science and Technology



700+
STUDENT REPS
VOLUNTEER
EACH YEAR
AT BU



WHERE TO FIND US?

THE STUDENT CENTRE - FIRST FLOOR

You can also email us at:
✉ reps@bournemouth.ac.uk

KEY EVENTS

SPEAK WEEK

MON | 25/11 /19 - FRI | 29/11/19

Twice a year, SUBU runs 'Speak Week', a campaign dedicated to collecting student feedback, where we send an army of Reps to listen to what you have to say. Keep an eye out for Speak Week this November!



SUBU ADVICE Supporting You



Student Centre
Floor 2

SUBU Advice provides free, independent and confidential advice and information. We provide non-judgemental advice and support in these areas:

Housing, money, academic, consumer, employment and personal.

An Advice Worker will listen to your concerns, ascertain what your options are to resolve the issue and support you to find a resolution. We are accredited by the Advice Quality Standard and are members of AdviceUK and the National Association of Student Money Advisers.

HOW TO CONTACT US

SUBU Advice is found on the 2nd floor of the Student Centre (Talbot Campus). Open Monday to Friday, 10am-4pm all year (except Bank Hols & BU Christmas Closure). Drop-in sessions are available Monday to Friday 2-4pm.

Our Bournemouth House (Lansdowne Campus) centre is open Monday, Tuesday and Thursday 9am - 2pm term time. Appointments only on Wednesdays, Fridays and during undergraduate vacation time.

We're here for you



✉ subuadvice@bournemouth.ac.uk

📞 07501622462

📘 /SUBUadvicebournemouth

🐦 @SUBUAdvice

🖱 www.subu.org.uk/advice

GET GOOD ADVICE

SUBU Advice can advise you on a range of issues including how to manage housemate disputes, what to do if your funding is delayed and we can listen to you if you are concerned your course or BU isn't the right place for you right now.

FINANCE WORRIES?

If you applied late for your funding, or if there are delays in processing your application and receiving payment, you may find yourself in financial difficulty during your first few weeks.

SUBU Advice can work with you to ensure you get your finances as quickly as possible. We can also identify other sources of funding available to you whilst you wait for your money to come through.



KEY EVENTS

DON'T DROP OUT, DROP-IN

MON | 07/09/19 - FRI | 18/09/19

MON | 02/12/19 - FRI | 13/12/19

Not sure BU is right for you? Struggling financially? Feeling homesick? We're here to talk through your options so you can make an informed decision as to what is best for you. 2-4pm, SC202.

FINANCIAL CAPABILITY WEEK

MON | 11/11/19 & FRI | 15/11/19

SUBU and BU are teaming up to support you in managing your finances, offering money saving tips, and links to sources of funding you may not be aware of right now.

MORE EVENT INFO:

📱 www.subu.org.uk/whatson

You can learn more about SUBU Advice and book an appointment by visiting our website: ✉ www.subu.org.uk/advice



COMMUNITY ACTION



Student Centre
Floor 2

The Community Action Team help you find opportunities to get involved in your local community with volunteering activities and sustainability campaigns. You can find us on the 2nd floor of The Student Centre.

WHO ARE WE?

We help you get involved in the world around you. You can volunteer with local charities or help with sustainability and awareness campaigns like fun ethical trade events or cleaning up Bournemouth's beaches.

HOW DO I GET STARTED?

The Community Action Hub is the student-led home of sustainability and volunteering. As a Volunteer, you can help out in the community with local charities or on campus with campaigns and events or, if you have more time and commitment you can become a Volunteering + Sustainability Leader, and run a longer term project throughout the term or year.

THINK THIS IS FOR YOU?

The community Action teams would love to meet you in person or you can just drop us an email:

✉ CAT@bournemouth.ac.uk!

🔍 Search 'SUBU Community Action'

COMMUNITY WARDENS

The Community Wardens are a group of students who work in residential areas near Talbot Campus to build good relations with the local community.

Got housing issues? The Wardens can help you with things like:

- Noise complaints
- Landlord disputes
- Parking
- Bins

✉ communitywardens@bournemouth.ac.uk



LOOK OUT FOR THE COMMUNITY WARDENS
IN WINTON AND CHARMINSTER

COMMUNITY ACTION Sustainability

We work to raise awareness of green issues. We host several events on campus such as Go Green Week and Fairtrade Fortnight, as well as national awareness days like Earth Day and Earth Hour.



OUR SUSTAINABILITY PROJECTS

The Green Loop: Join the Green Loop project and learn how to grow organic foods in the on-campus polytunnel and down at our very own allotment.

Ecobrick Building: Learn how to build Ecobricks, find out how to cut your plastic consumption, and learn how to live more sustainably.

The Big Give: Simply donate all your unwanted stuff at the end of the academic year, or help us with collecting and distributing donations to various homeless charities.

Supporting the BU Bees: Learn how to make bee bombs and grow flowers to help bees.

A WALK IN THE PARK

If you fancy a de-stress and a chance to meet some new friends then every Wednesday in October we'll be taking a relaxing hour-long walk through the parks surrounding Talbot Campus, including Slades Farm and the SUBU allotment.

📱 www.subu.org.uk/whatson

📺 / SUBUSustainabilityAction



JOIN THE SUSTAINABILITY REVOLUTION!

COMMUNITY ACTION Volunteering



Student Centre
Floor 2

VOLUNTEER



ANNIE



Without volunteering,
I definitely wouldn't
have got my placement.



WHAT CAN VOLUNTEERING DO FOR ME?

Community Volunteering is an amazing thing to do for others but it can also help you because you learn new skills and gain confidence, plus you enhance your CV and increase your employability. It's loads of fun and it's a great chance to make new friends.

WHO COULD I VOLUNTEER WITH?

- Shelter
- Bournemouth Parks Foundation
- Mars Trust
- Dorset Police
- Royal Lifesaving Society UK
- Citizens Advice
- Dorset Wildlife Trust



And there's many more – just check out the big list of local charities on our Volunteer Hub!

OUR PROJECTS

Our amazing student volunteers run great projects that you can get involved in, from beach cleans, growing at the allotment, helping refugees in the community, supporting wildlife locally and more.

GET STARTED NOW.. VOLUNTEER TODAY!

Using our Volunteer Hub website, you can connect with charities which offer volunteering opportunities, log your hours to keep a record of your contribution and access our handy toolkit.

Check it out:

www.subu.org.uk/volunteering

WANT TO KNOW MORE?

If you have any questions about volunteering then please get in touch.



subuvolunteering@bournemouth.ac.uk



Do Good,
Feel Good!



KEY EVENTS



WALK IN THE PARK

OCTOBER

Join us on 2nd, 9th, 16th, 23rd & 30th October for a walk in the park, to improve wellbeing, make friends, and discover the local community garden, local park with velodrome and skate park, and our very own students allotment.

BEACH CLEANS

SUN | 06/10/19

Regular beach cleans throughout the term with our Beach Champions team.

5 MINUTE VOLUNTEERING

TERMLY

in Halls of Residence, on Wednesday afternoon, as part of Reslife's 'What On Wednesdays' programme, and popping up on campus throughout the term.



BourneFresh

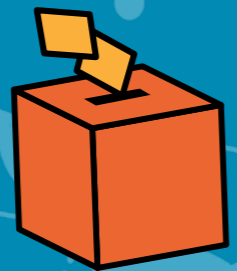
Sign up today: www.subu.org.uk/volunteering



DEMOCRACY & CAMPAIGNS



Student Centre
Floor 4



We help SUBU embed equality, diversity and inclusion across BU, giving every student a platform for their voice to be heard. We do this through the SUBU Executive Committee, our Big Student Meetings, cross-campus elections, Student Councils & Liberation Campaigns.

PART-TIME OFFICERS

- Part-Time Executive Officers
- Liberation Campaigns
- Mental Health Zone

FULL-TIME OFFICERS

- SUBU President
- Vice-President Activities
- Vice-President Communities
- Vice-President Education
- Vice-President Welfare & Equal Opportunities

HOW CAN I GET INVOLVED?

There are plenty of opportunities for all students studying at BU to get involved. Whether it's one of our Part-Time Officer roles, being part of a Liberation Campaign or running as a Full-Time Sabbatical Officer, there is a role for everyone. All positions are either elected in a cross-campus ballot, or for the Liberation Campaigns, elected at relevant conferences.



THE BENEFITS

Not only will it look impressive on your CV, but getting involved gives you the opportunity to develop leadership, project management and team working skills. You'll gain confidence, get to meet loads of new people and hopefully have fun while doing it.



SO WHAT NOW?

Elections for Part-Time Officers and Liberation Campaigns will be taking place in your first semester - you can keep an eye out for information on Facebook and posters around campus. Alternatively you can come and find us on the 4th floor of SUBU, we are always happy to have a chat!



ANNUAL EVENTS

We also help facilitate several events such as Bournemouth Student Pride, the BME awards and the Democracy and Equality awards, an annual celebration rewarding the outstanding contributions to Democracy & Equality from students at BU.



KEY EVENTS



THE BIG STUDENT MEETING

TERMLY

The Big Student Meeting is the main event for all students to be able to vote on current issues. It will be held late October.

BLACK HISTORY MONTH

OCTOBER

The annual celebration of Black History Month happens throughout October with talks, debates and exhibitions. Everybody is invited to participate and learn from the programme.

LIBERATION CAMPAIGNS



Student Centre
Floor 4

We are proud to have our Liberation Campaigns. These groups are a community made up of, and led by, students who self-identify within the six different liberation groups.



WHAT DO THEY DO?

Liberation campaigns connect our student members, enabling students to build friendships and share experiences and to act collectively in highlighting issues, raising awareness and campaigning for change.

A SAFER AND MORE INCLUSIVE BU

Liberation Campaigns hold the Students' Union and University to account by challenging discrimination. The Campaigns work together to promote intersectionality and achieve the maximum impact for all BU students.

Liberation Campaigns are run by a Liberation Campaign Committee, led by the relevant Liberation Officer.

OUR SIX LIBERATION CAMPAIGNS

ASIAN, ARAB AND ETHNIC MINORITY STUDENTS' CAMPAIGN

BLACK STUDENTS' CAMPAIGN

STUDENTS' WITH DISABILITIES CAMPAIGN

LESBIAN, GAY, BISEXUAL PLUS STUDENTS' CAMPAIGN

TRANSGENDER AND NON-BINARY STUDENTS' CAMPAIGN

WOMEN'S CAMPAIGN



ASIAN, ARAB AND ETHNIC MINORITY STUDENTS' CAMPAIGN

Here to represent the interests of and connect students of Asian, Arab and mixed heritage at BU.

From campaigning on issues that affect these students to hosting community socials

✉ aaemcampaign@bournemouth.ac.uk

Facebook: /subuAAEM

BLACK STUDENTS' CAMPAIGN

Here to represent the interests of and connect black students studying at BU.

From campaigning on issues like the black attainment gap to hosting socials that connect the community.

✉ blackstudents@bournemouth.ac.uk

Facebook: /subuBSC



STUDENTS' WITH DISABILITIES CAMPAIGN

Here to represent the interests of and connect disabled students studying at BU.

From campaigning on improving access at BU to providing accessible events that build a community for students.

✉ disabilitiescampaign@bournemouth.ac.uk

Facebook: /subuSWD



LESBIAN, GAY, BISEXUAL PLUS STUDENTS' CAMPAIGN

Here to represent the interests of and connect BU students who identify as Lesbian, Gay, Bisexual and other minority sexual orientations.

From campaigning on queer issues to helping plan and deliver Bournemouth Student Pride.

✉ lgbplus@bournemouth.ac.uk

Facebook: /subuLGB

TRANSGENDER AND NON-BINARY STUDENTS' CAMPAIGN

Here to represent the interests of and connect transgender and non-binary students at BU. From improving the provisions of gender neutral toilets on campus, creating safe and accessible events for students and helping to plan and deliver Bournemouth Student Pride.

✉ transcampaign@bournemouth.ac.uk

Facebook: /subuTNB



WOMEN'S CAMPAIGN

Here to represent the interests of self-defining women studying at BU.

From campaigning to raise awareness of personal safety and standing together to tackle gender inequality.

✉ womenscampaign@bournemouth.ac.uk

Facebook: /subuWomen

KEY AIMS

CONNECT STUDENTS BY CREATING FRIENDSHIPS IN A SAFE AND WELCOMING COMMUNITY

COLLABORATE WITH OTHER LIBERATION CAMPAIGNS TO RAISE AWARENESS AND EDUCATE

HIGHLIGHT CURRENT ISSUES AND EMPOWER STUDENTS TO ACT COLLECTIVELY TO CREATE CHANGE

HOLD THE STUDENTS' UNION AND UNIVERSITY TO ACCOUNT BY CHALLENGING DISCRIMINATION AND MAKING SURE THEY ACT WITH EQUALITY

TO MARK NATIONAL AWARENESS CAMPAIGNS

WANT TO GET INVOLVED?

Each Liberation Campaign is led by a committee which is made up of elected students - a Liberation Officer and four Committee Members. Any self-identifying students can get involved by running for one of these positions - you'll learn many new skills, lead on building a community for and representative of all BU students, and you will receive full training and on-going support from SUBU staff.

You can also get involved by coming to any of the socials, events and activities organised by the Campaigns throughout the year. From talent shows to coffee socials, celebrating our histories to inclusive club nights.

If you want to meet new people, try new things and learn from the experiences of others then look no further.



WE'RE HERE FOR YOU AT LANSDOWNE



Studland House
Ground Floor

The Students' Union team at Lansdowne are based in Studland House (in SG02). They are there to help and signpost you to any of the services in this guide. We look forward to welcoming you to Lansdowne very soon.

WHERE TO EAT, DRINK AND RELAX

There are plenty of social spaces & cafés for you to find your favourite place to unwind and you can find them in Bournemouth House, Studland House and the Executive Business Centre (EBC).

Why not save money and be more sustainable? You could also save money and bring your own lunch and there are microwaves in Bournemouth House Student Lounge (B130) and a 24hr access microwave on the ground floor cafe in Studland House.

ENJOY CAMPAIGNS AND EVENTS

We help support, host and run all kinds of students' union events to benefit and celebrate the Lansdowne community such as Black History Month, BU Mental Health Day, Disability History Month, Wellfest and Student parent/ carers events. Keep an eye on our key socials for what's coming up.

Join the group, search: "Bournemouth University Lansdowne Students"



/sububournemouth



SUBU ADVICE BG07
Open: Mon, Tues & Thurs
at 9.30am - 2pm



BOURNEMOUTH HOUSE
Boho Lounge



JOIN YOUR SOCIETY.. OR FORM A NEW ONE

One of our SUBU aims is to enable every student to belong to an academic society so that we can help develop your future career and expand your friendship groups. We have lots of Lansdowne-specific academic societies so come and see us in the Studland House office and we'll help get you onboard.

COME AND SAY HI!

This is really easy and there is no need to book as our door in SG02 is always open for a friendly chat. We look forward to seeing you soon.



OCCUPATIONAL THERAPY SOCIETY

HSS AWARDS 'OUTSTANDING CONTRIBUTION TO SUBU'



KEY EVENTS

MEET SUBU ACTIVITIES TEAM

THURS | 26/09/19

At The Engine Room café,
Holdenhurst Road - 12noon- 2pm.

FRESHERS' FAIR FAMILY ZONE

SAT | 28/09/19

Face painting, animal adventures, crafts and much more for the kids to get involved in at our Freshers Fair! 11am-3pm*. 10-11 - Accessibility Hour.

WALK AND TALK

MON | 30/09/19

A beach walk every Monday commencing 30th September at 11.30am- 12noon, meet SG02.

SAVE BIG on Entertainment – Fashion
Travel – Eating Out



Health & Beauty – Music & Tech
Uni essentials – Supermarket

200+ UK DISCOUNTS

ODEON MISSGUIDED

(25% OFF STUDENT PRICES!)

25% OFF

national express

20% OFF

 Railcard

12% OFF

ASOS

discover fashion online

10% OFF

COOP

Your TOTUM includes exclusive offers that you
simply won't find anywhere else

Get discounts everywhere from Amazon to Zizzi
Buy your card today: www.totum.com

UN Sustainable Development Goals



SUBU'S 2023 vision is to enable the future now.

 /sububournemouth

 @sububournemouth